



**CUSHMAN &  
WAKEFIELD**

FOR LEASE

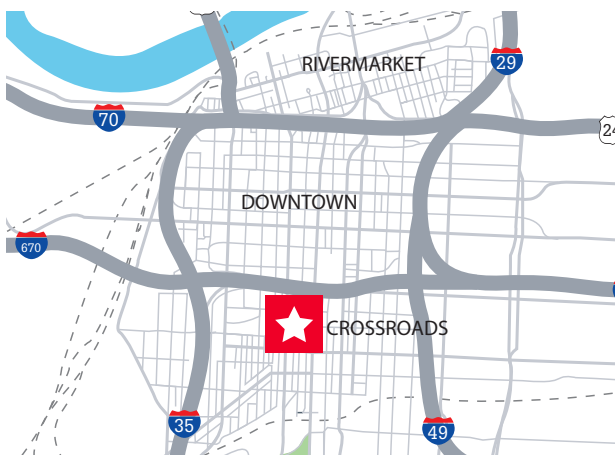
# The Mainmark Building

1627 Main Street / Kansas City, MO

**1,000 - 4,800 SF Office Space**  
**Lease Rate: \$20.00 PSF**

## Property Highlights

- Twelve story building with beautiful views of the Crossroads District
- Strong local ownership and management
- Small suites available
- Walking distance to several of the best restaurants in the area
- Located on streetcar line
- Three blocks from the Power & Light District



**Conor M. Twibell**  
Director  
+1 816 412 0244  
conor.twibell@cushwake.com

4600 Madison Avenue, Suite 800  
Kansas City, MO 64112  
Main +1 816 221 2200  
Fax +1 816 842 2798  
[cushmanwakefield.com](http://cushmanwakefield.com)



FOR LEASE

# The Mainmark Building

1627 Main Street / Kansas City, MO

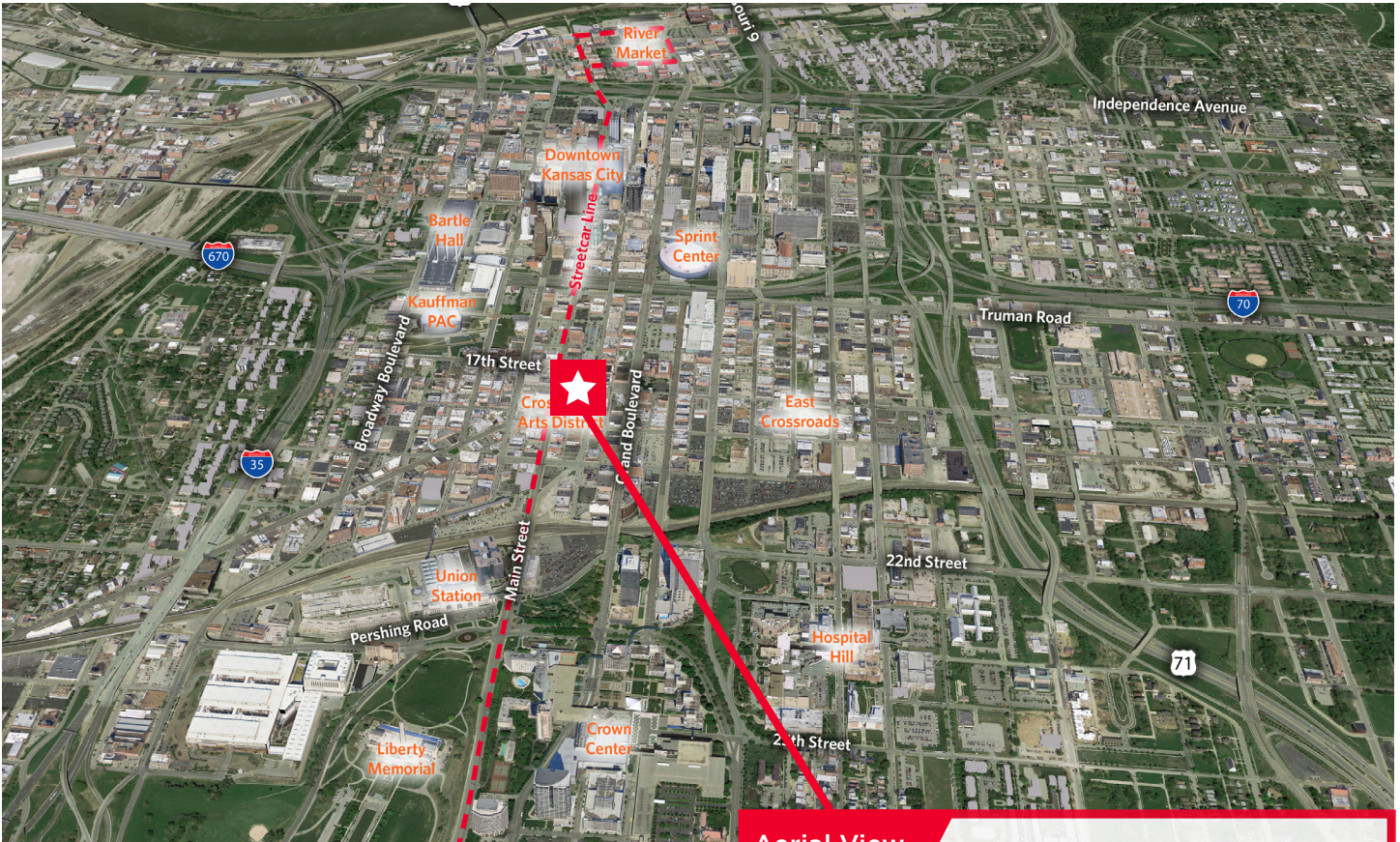
## Views from The Mainmark Building



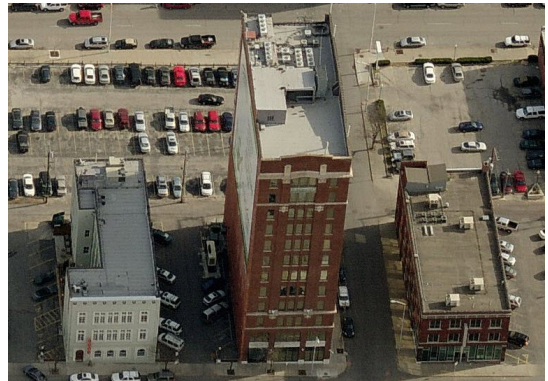
**Conor M. Twibell**  
Director  
+1 816 412 0244  
conor.twibell@cushwake.com

4600 Madison Avenue, Suite 800  
Kansas City, MO 64112  
Main +1 816 221 2200  
Fax +1 816 842 2798  
[cushmanwakefield.com](http://cushmanwakefield.com)

## Aerial



Aerial View



## Space Available

1st Floor	4,100 SF	\$20.00 PSF
4th Floor	3,000 SF	\$20.00 PSF
5th Floor	1,000 SF	\$20.00 PSF
10th Floor (Office/Data Center)	4,800 SF	Call for Information
11th Floor (Data Center)	1,500 SF	Call for Information
11th Floor	3,600 SF	\$20.00 PSF

### Conor M. Twibell

Director

+1 816 412 0244

conor.twibell@cushwake.com

4600 Madison Avenue, Suite 800

Kansas City, MO 64112

Main +1 816 221 2200

Fax +1 816 842 2798

[cushmanwakefield.com](http://cushmanwakefield.com)