

ATLAS

CARLSBAD | CALIFORNIA

5909 & 5919 SEA OTTER PLACE
CARLSBAD, CA 92010

AVAILABLE LIFE SCIENCE AND R&D: 8,196-80,836 SF



ATLAS is a 230,957 square-foot R&D Campus that embodies the quintessential Southern Californian lifestyle, overlooking Northern San Diego's coastline. ATLAS was designed and built under the ideal that environment shapes success. The project focuses on creative space built to inspire ingenuity, encourage employee wellness and streamline business.

Capturing the natural beauty of its premier location, ATLAS comprised of two adjoining buildings, ALPHA and BETA: 2 story, 92,770 SF ALPHA features 20' floor-to-ceiling windows with panoramic views while expansive 138,187 SF Beta features 24' ceilings, an open-air indoor/outdoor gym and coastal views. With numerous amenities and innovative indoor/outdoor work environment, ATLAS creates communal working space that is designed to support modern business needs.





PROPERTY FEATURES

Property Address 5909 ("Alpha") Sea Otter Place
5919 ("Beta") Sea Otter Place

Zoning PM: Office, Industrial, R&D (GMP/Lab)

Slab to Slab/
Clear Height Alpha – 14'
Beta – 24'

Construction Alpha – Steel Frame
Beta – Concrete Tilt

Power 8,000 Amps 480/277V

Sprinklers Fully Sprinklered

Windows Floor-to-Ceiling Glass (Alpha)

Equipment Yard Design and Location In Progress

Loading Design and Location In Progress

ATLAS SITE PLAN

BUILDING ALPHA	92,770 SF
BUILDING BETA	138,187 SF

AVAILABLE OPTIONS

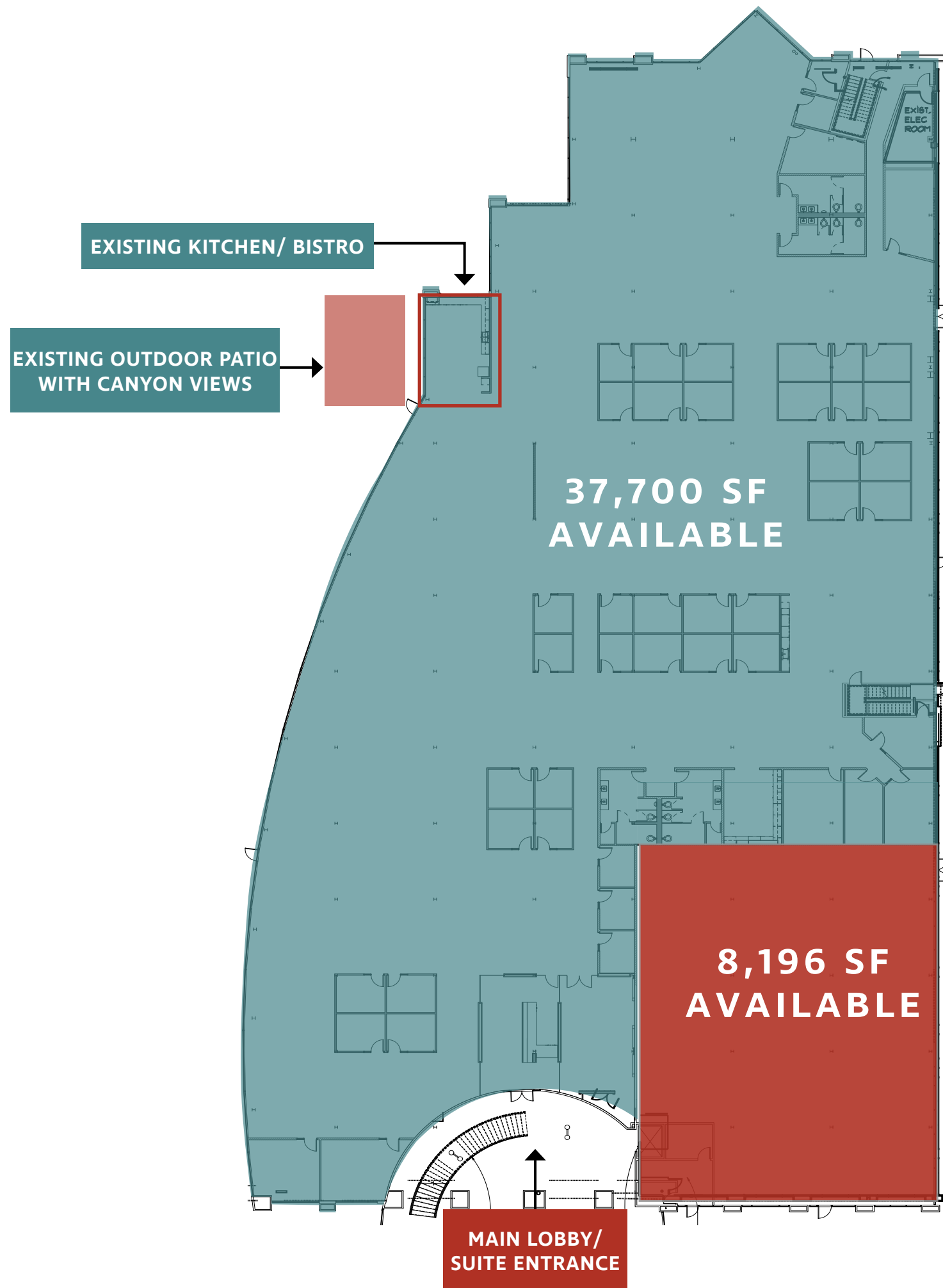
ALPHA

SUITE 100/110 CONTIGUOUS	45,896 SF
SUITE 110	8,196 SF
SUITE 220	16,345 SF
SUITE 110/220 CONTIGUOUS	24,541 SF

BETA

SUITE 300	18,595 SF
-----------	-----------

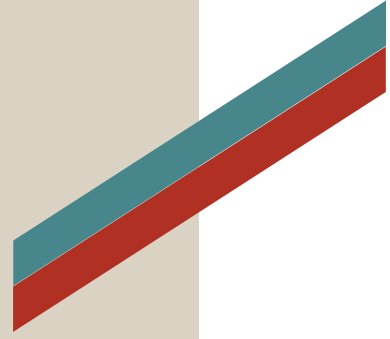




ALPHA / FLOOR 1 / SUITE 110

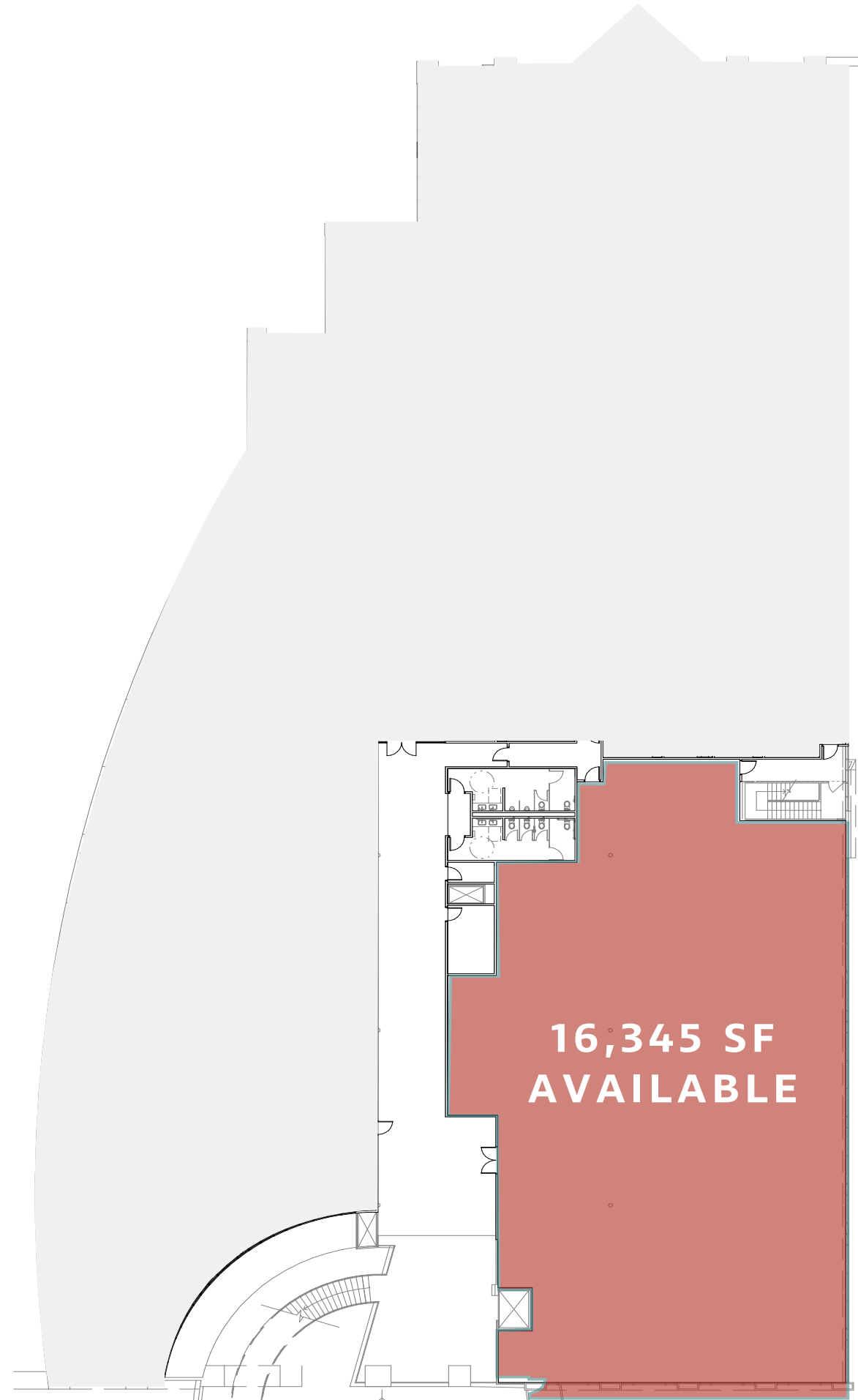
FLOOR 1 AVAILABLE SQUARE FOOTAGE
45,896 SF



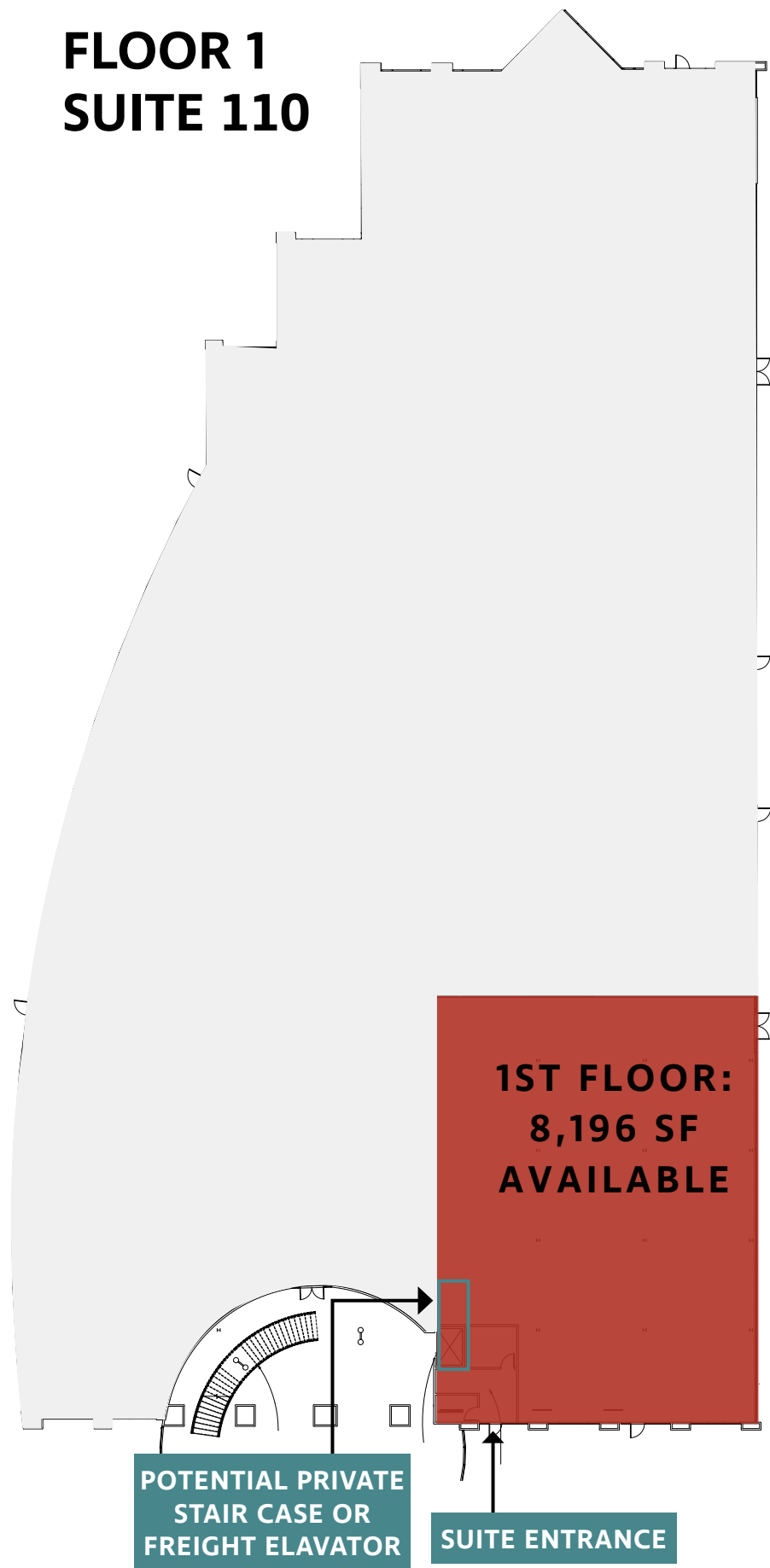


ALPHA / FLOOR 2 / SUITE 220

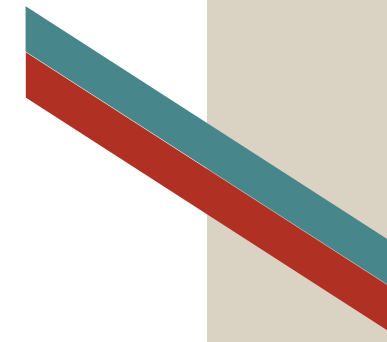
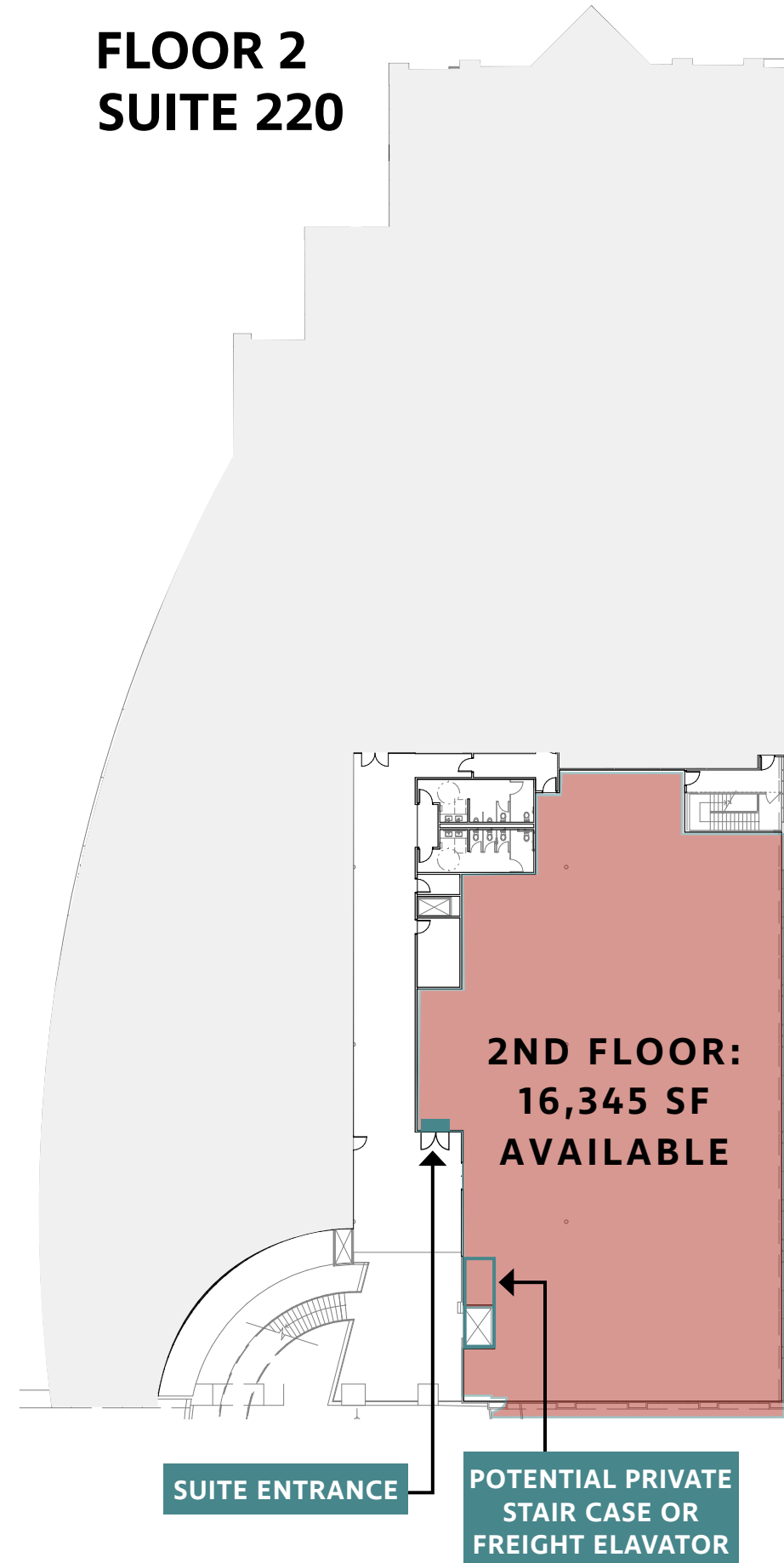
FLOOR 2 AVAILABLE SQUARE FOOTAGE
16,345 SF



**FLOOR 1
SUITE 110**



**FLOOR 2
SUITE 220**

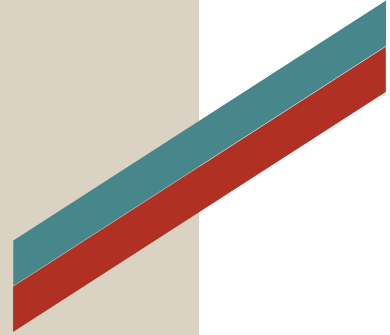


**ALPHA / 1ST & 2ND STORY
CONTIGUOUS PLAN**

TOTAL AVAILABLE SQUARE FOOTAGE
24,541 SF

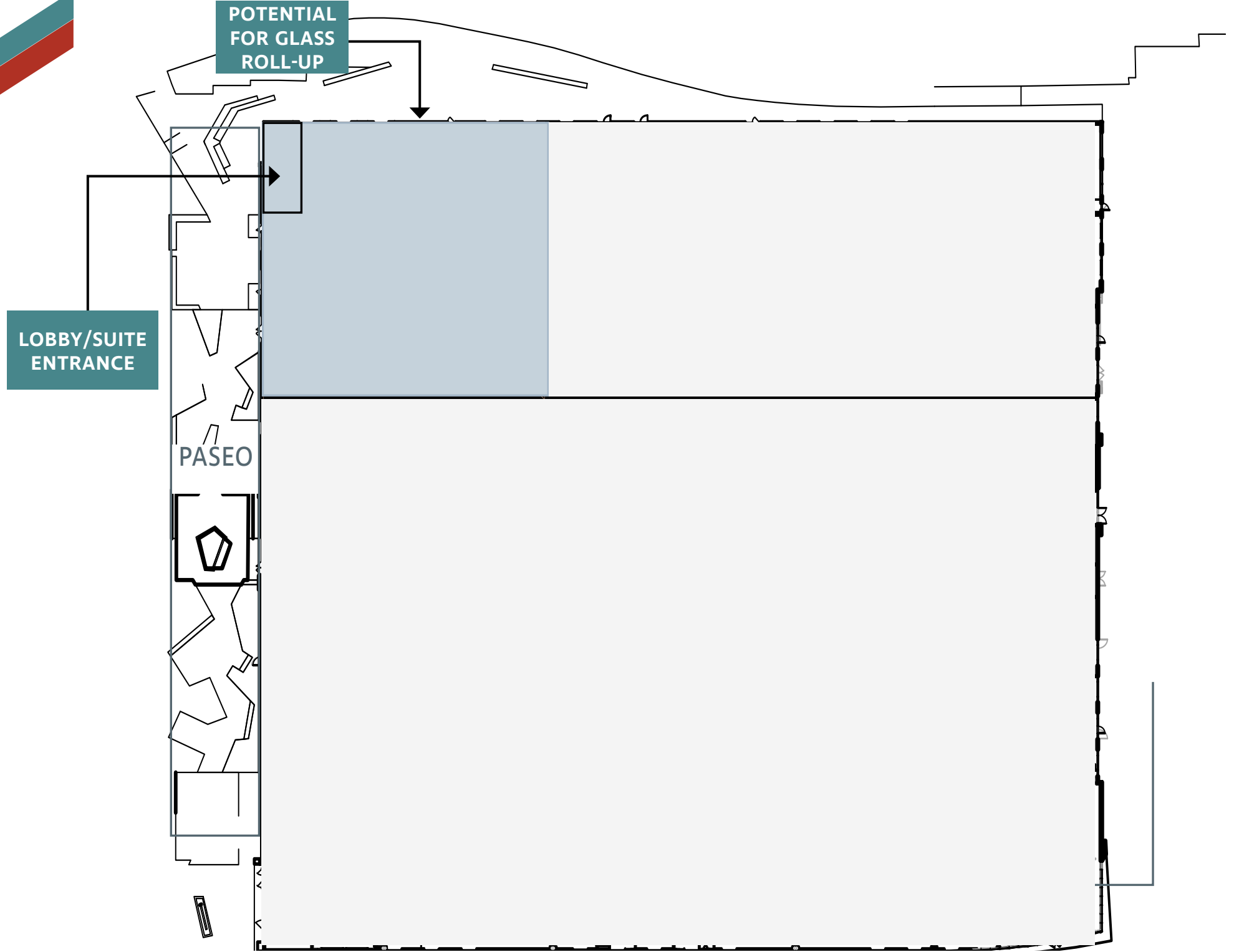
- Ability to Accomodate a Private Interior Staircase or Elevator Service
- Existing Freight Elevator Pad
- Existing Staircase Floor Penetration





BETA

SUITE 300 AVAILABLE
18,595 SF





**CUTTING EDGE
ARCHITECTURE**



AMENITIES

- Newly redeveloped creative campus
- Immense resort style outdoor amenity space for employees
- Outdoor work and meeting spaces with lounge areas, Wi-Fi, outdoor TV, outdoor kitchen with BBQ area and water features
- Indoor/outdoor fitness and wellness amenities, which include: staffed trainers, classes, passive/active workout, showers and lockers
- Joes on the Nose, an on-site boutique garden cafe, offering breakfast and lunch
- Amphitheatre for employee events, entertaining and outdoor presentations
- Scenic creative office suites with 20' floor-to-ceiling glassline
- EV charging stations
- Bocce Ball courts
- Walking distance to restaurants
- Panoramic scenic and coastal views
- Multiple access points to hiking, walking and running trails











**113,725
POPULATION**



**GOLF CAPITAL
OF THE WORLD**



**7 MILES OF
COASTLINE**



**150+
MANUFACTURING
PLANTS**



**UNEMPLOYMENT
RATE 3.7%**



**46 MILES OF
HIKING TRAILS**



**EDUCATIONAL
ATTAINMENT**

42% BACHELOR'S
DEGREE OR HIGHER

2.9% PH.D



INDUSTRIES

INFORMATION & COMMUNICATIONS
TECHNOLOGY

LIFE SCIENCES

ACTION SPORTS MANUFACTURING

CLEAN TECHNOLOGY

LOCATION

Spanning 39 square miles, the City of Carlsbad is a scenic coastal community that lies approximately 35 miles north of Downtown San Diego and 30 miles south of Orange County. Carlsbad offers the advantages of a major metropolitan area in a suburban setting with a large concentration of executive residential communities, high quality schools and a wealth of retail, restaurants and entertainment. As the "Golf Capital of the World" and a regional leader in San Diego's action sports manufacturing industry, Carlsbad is renowned for its abundant recreation centered on its seven miles of coastline, 46 miles of hiking trails, parks, sports facilities, and world-class golf courses.

CARLSBAD CORPORATE NEIGHBORS



ENCINITAS

DOWNTOWN CARLSBAD

5 5 MIN

PALOMAR AIRPORT

PALOMAR COMMONS

El Camino Real

BRESSI RANCH

Logos for BRESSI RANCH area:

- STATER
- PICK UP STIX
- CHASE
- petco
- TRADER JOE'S
- rubio's
- SUPERCUTS
- Peets COFFEE
- FISH DISTRICT
- néktar
- twig hair lounge
- BLOOM a women's boutique
- BOYS & GIRLS CLUBS

Logos for Palomar Commons area:

- LOWE'S
- Chipotle
- FIVE GUYS
- noodles
- Jockey Mints
- Panera
- CALIFORNIA BANK

LIFT

Eureka! DEL LUSO

THE SQUARE

Logos for THE SQUARE area:

- BevMo!
- CVS pharmacy
- RICHARD WALKERS
- CASERO
- BIRD ROCK COFFEE ROASTERS
- MENDOCINO FARMS
- MISSION FEDERAL CREDIT UNION
- Mango Mango
- 45 Training

ATLAS
CARLSBAD | CALIFORNIA

NEARBY AMENITIES

ATLAS

CARLSBAD | CALIFORNIA

Aric Starck
Executive Vice Chairman
760.431.4211
aric.starck@cushwake.com
CA Lic. 01325461

Drew Dodds
Senior Associate
760.431.3863
drew.dodds@cushwake.com
CA Lic. 02021095

