

seaview

CORPORATE CENTER

10180 - 10190 Telesis Court
San Diego, CA 92121



||| Manulife Investment Management



10180

Futurewei Technologies, Inc.	120
John Hancock Real Estate	150
Development Management Group	155
	165
CA Technologies	200
Futurewei Technologies, Inc.	208
Modern Communications Systems	240
Huawei Device USA R&D	400
Spreadtrum Communications USA Inc.	500



about the project





ABOUT THE PROJECT

seaview

CORPORATE CENTER

Seaview Corporate Center is a four-building campus environment with three high-rise, high-image Class A office buildings and one R&D facility. With its superior Northwestern location in Sorrento Mesa, Seaview allows excellent access to I-805 and I-5. Seaview Corporate Center features numerous amenities including a recently expanded and revitalized gym, tennis/basketball court and pool for employee use. The quality and location of the Seaview Corporate Center makes it the Premier Class A campus in San Diego.

- Project Size: 355,368 RSF
- Space Available: 1,317 to 72,776 RSF
- Monument and building signage available
- High image buildings with large nationally recognized tenants
- On-site sit down gourmet café - Soma Cafe & Bakery
- Fitness center with state of the art equipment, showers, lockers and lounge, lap pool, basketball/tennis court and nearby walking trails
- Outdoor patio and event space with ocean and canyon views
- On-site ownership & property management
- Daily coaster pick-up and drop-off shuttle service
- Panoramic views of the Pacific Ocean and Los Peñasquitos Canyon



Seaview

on tracs
less driven



10182

availabilities



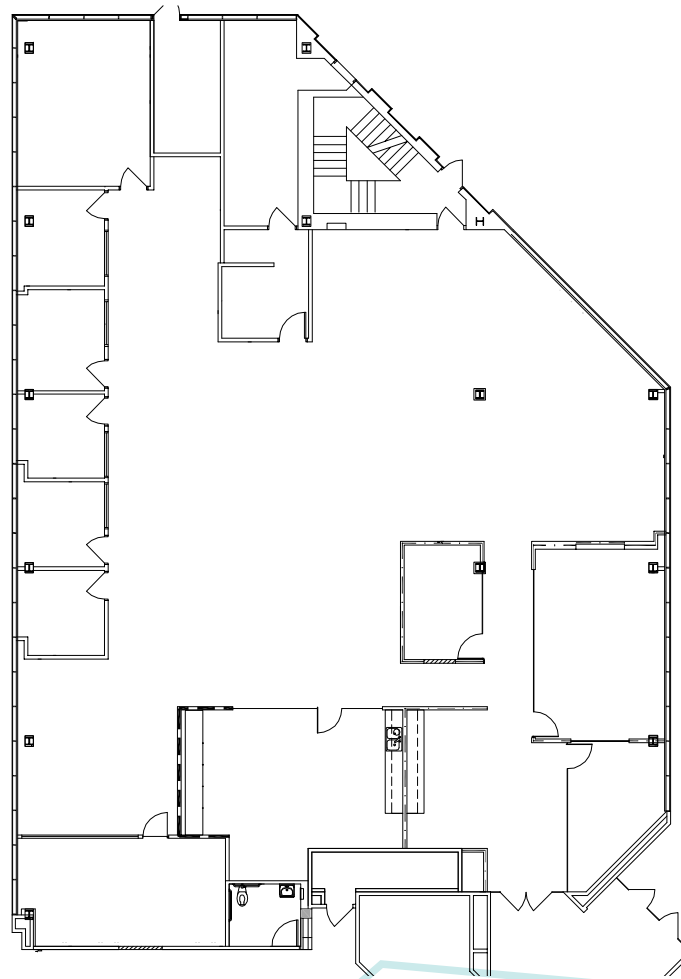


AVAILABILITIES

BUILDING / SUITE	RSF	RATE	AVAILABILITY
10180 Telesis Ct. Suite 120	6,485	Negotiable	Immediately
10180 Telesis Ct. Suite 155	1,317	Negotiable	Immediately
10180 Telesis Ct. Suite 210	6,309	Negotiable	Immediately
10180 Telesis Ct. Suite 240	2,133	Negotiable	Immediately
10180 Telesis Ct. Suite 350	1,829	Negotiable	Immediately
10188 Telesis Ct. Suite 100*	8,190	Negotiable	Immediately
10188 Telesis Ct. Suite 140*	10,982	Negotiable	Immediately
10188 Telesis Ct. Suite 250*	10,476	Negotiable	Immediately
10188 Telesis Ct. Suite 300*	21,564	Negotiable	Immediately
10188 Telesis Ct. Suite 400*	21,564	Negotiable	Immediately
10190 Telesis Ct. Entire Building	12,783	Negotiable	Immediately

* Contiguous to 72,776 SF

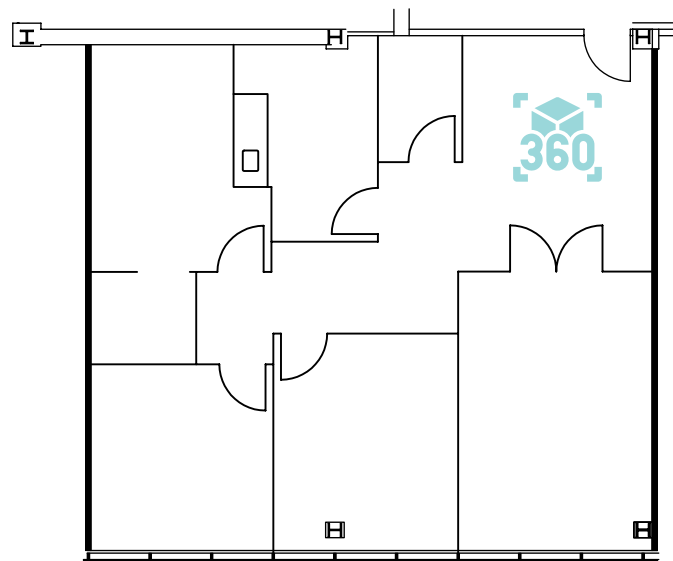
10180 TELESIS CT
SUITE 120 - 6,485 SF



CURRENT BUILD-OUT

Ground floor spec suite with double doors off the main lobby and floor to ceiling glassline. Mix of exposed ceiling and drop ceiling with 2 perimeter private offices, 2 conference rooms, huddle room, break area, open office, electronics lab, and server/storage room

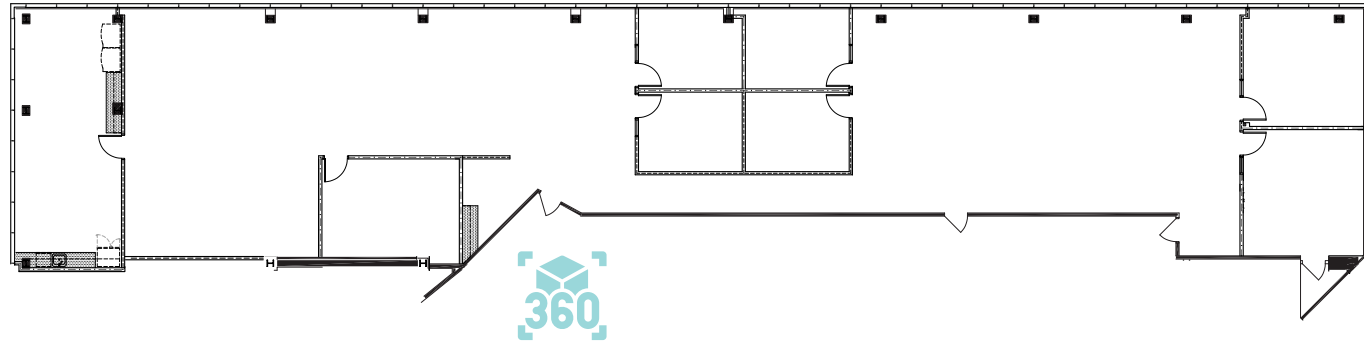
10180 TELESIS CT
SUITE 155 - 1,317 SF



CURRENT BUILD-OUT

Efficient small suite on the ground floor with conference room, break room, three private offices and server/storage room

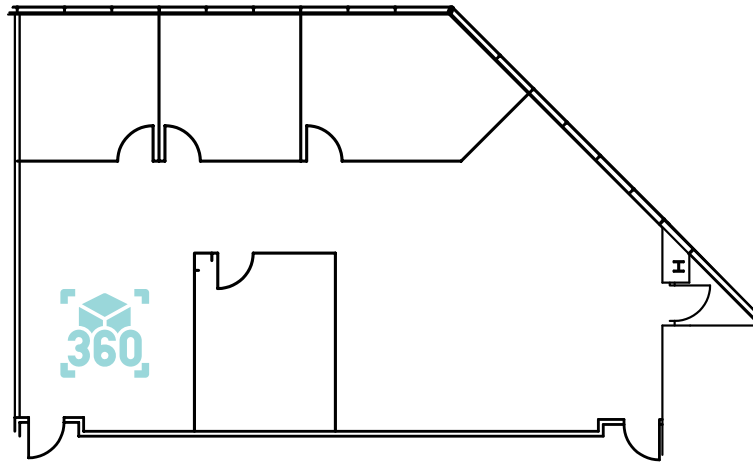
10180 TELESIS CT
SUITE 210 - 6,309 SF



CURRENT BUILD-OUT

Suite is high-end professional office that can be occupied immediately. Expansive glassline with panoramic views.

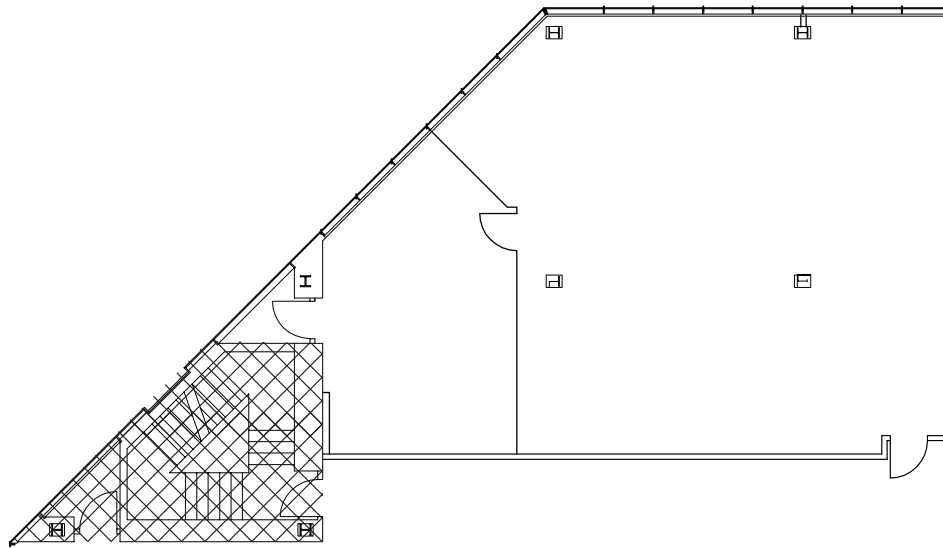
10180 TELESIS CT
SUITE 240 - 2,133 SF



CURRENT BUILD-OUT

Two glass front private offices, two glass front conference room, internal break room, reception, open office and a private patio. Great glass line with canyon views.

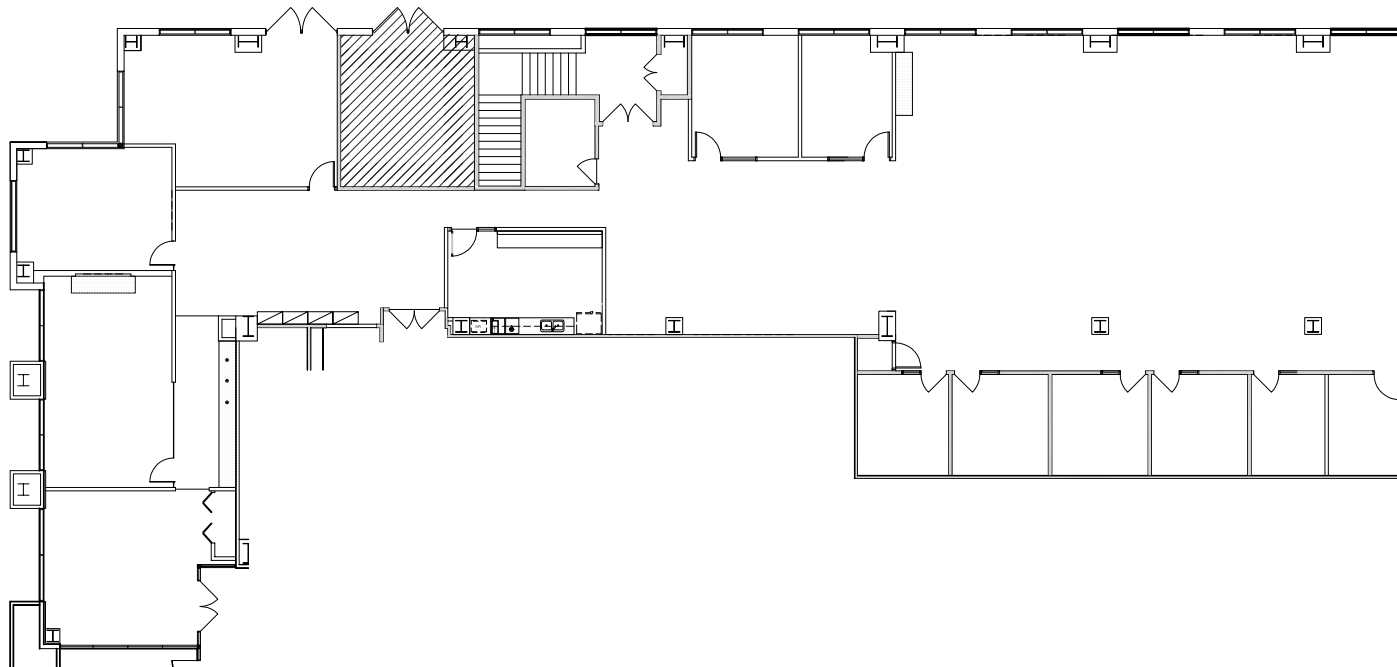
10180 TELESIS CT
SUITE 350 - 1,829 SF



CURRENT BUILD-OUT

Open office with meeting room. Extensive glass line and canyon views.

10188 TELESIS CT
SUITE 100 - 8,190 SF

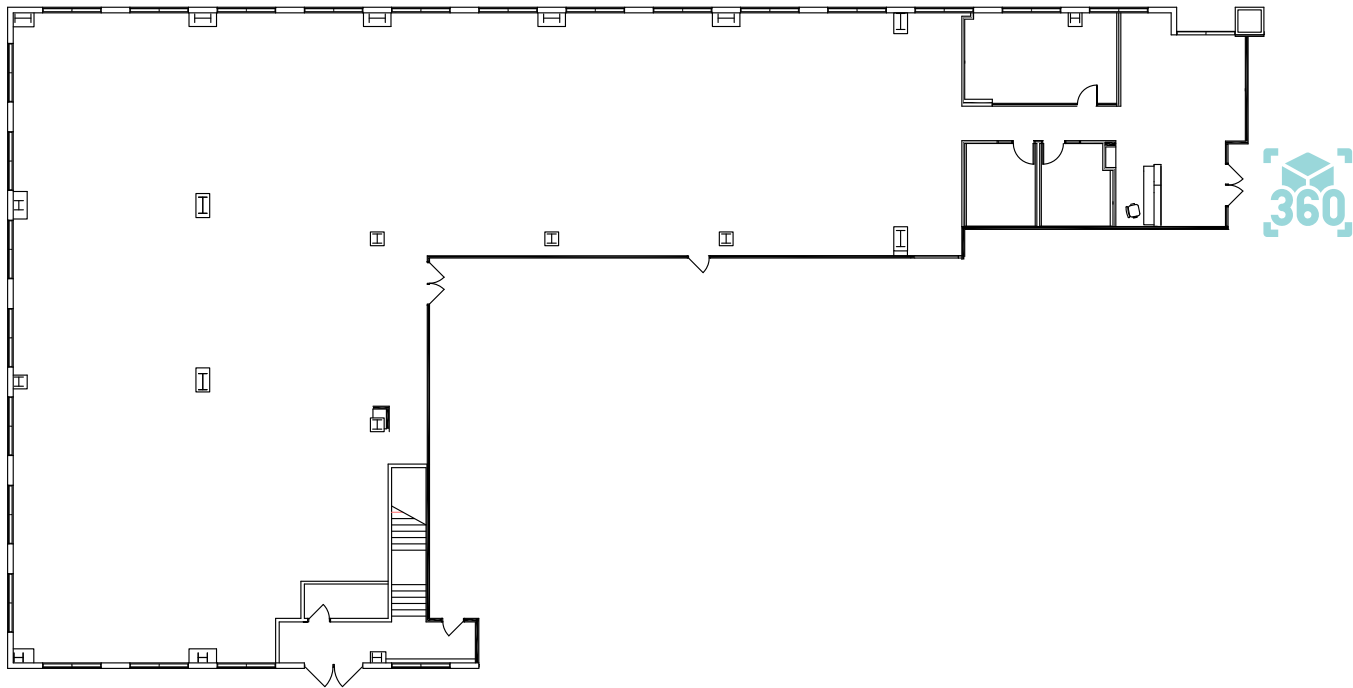


CURRENT BUILD-OUT

Ground floor with doubly doors off the main lobby. High end space with floor to ceiling glass and a mixture of private offices, conference rooms, open office, break room, and small shipping receiving area with direct exterior double door loading.

Contiguous to 72,776 SF.

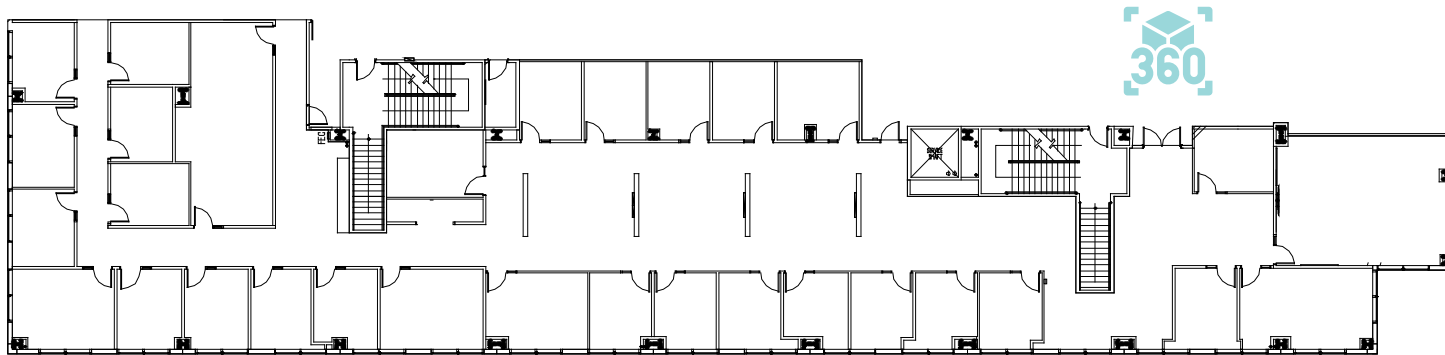
10188 TELESIS CT
SUITE 140 - 10,982 SF



CURRENT BUILD-OUT

Partial creative office exposed ceiling spec suite with the balance in shell condition. Double door of the main lobby and expansive window line with canyon views. Contiguous to 72,776 SF.

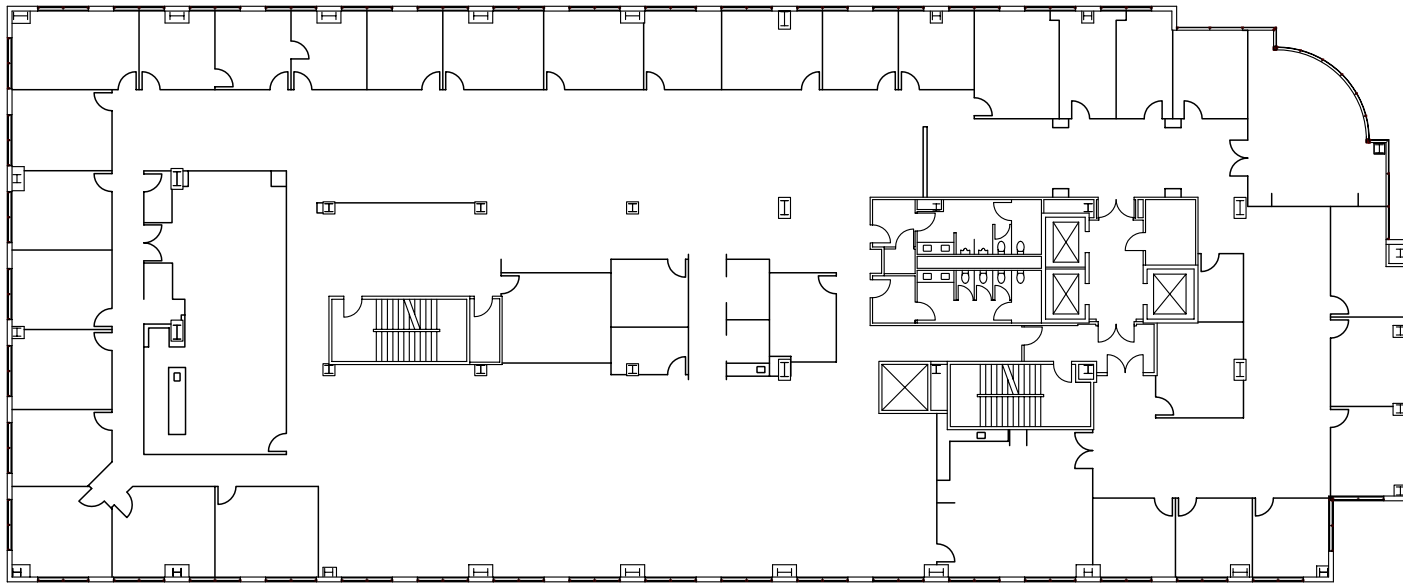
10188 TELESIS CT
SUITE 250 - 10,476 SF



CURRENT BUILD-OUT

Professional private office environment. Double door entry off of floor lobby and expansive windowline with panoramic views. Contiguous to 72,776 SF.

10188 TELESIS CT
SUITE 300 - 21,564 SF



CURRENT BUILD-OUT

Full floor with high efficiency and frontloaded core. Mix of open office, private offices, and conference rooms with large break area. Space possesses sweeping views of the ocean and canyons. Contiguous to 72,776 SF.

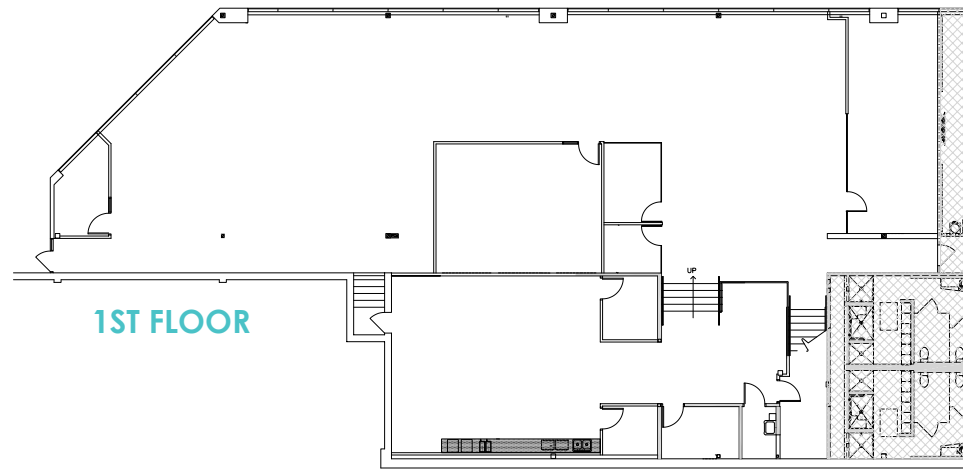
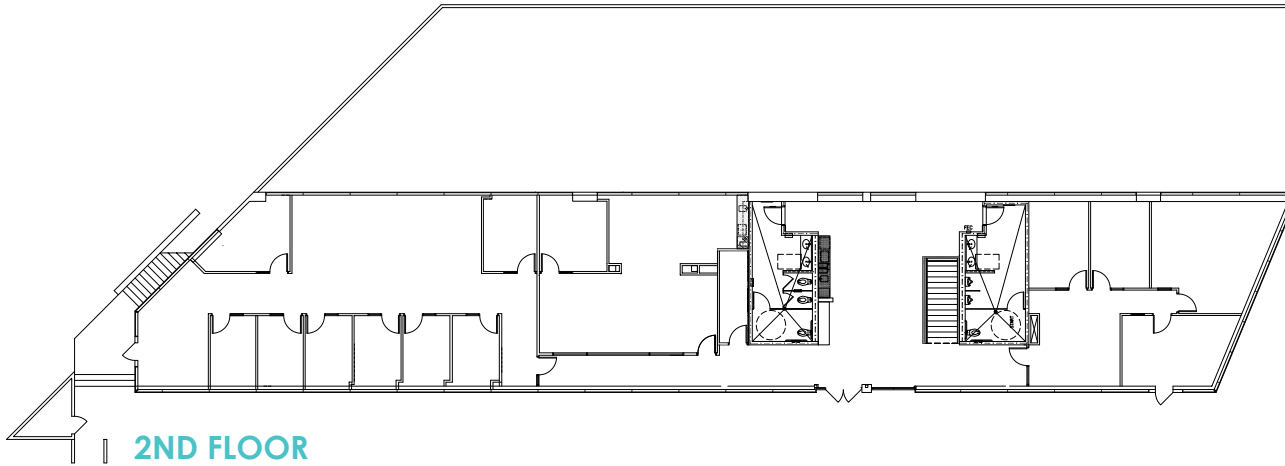
10188 TELESIS CT
SUITE 400 - 21,564 SF



CURRENT BUILD-OUT

Full floor opportunity with canyon and ocean views. Mix of private office and open work space with floor to ceiling glass line. Contiguous to 72,776 SF.

10190 TELESIS CT
ENTIRE BUILDING -
12,783 SF



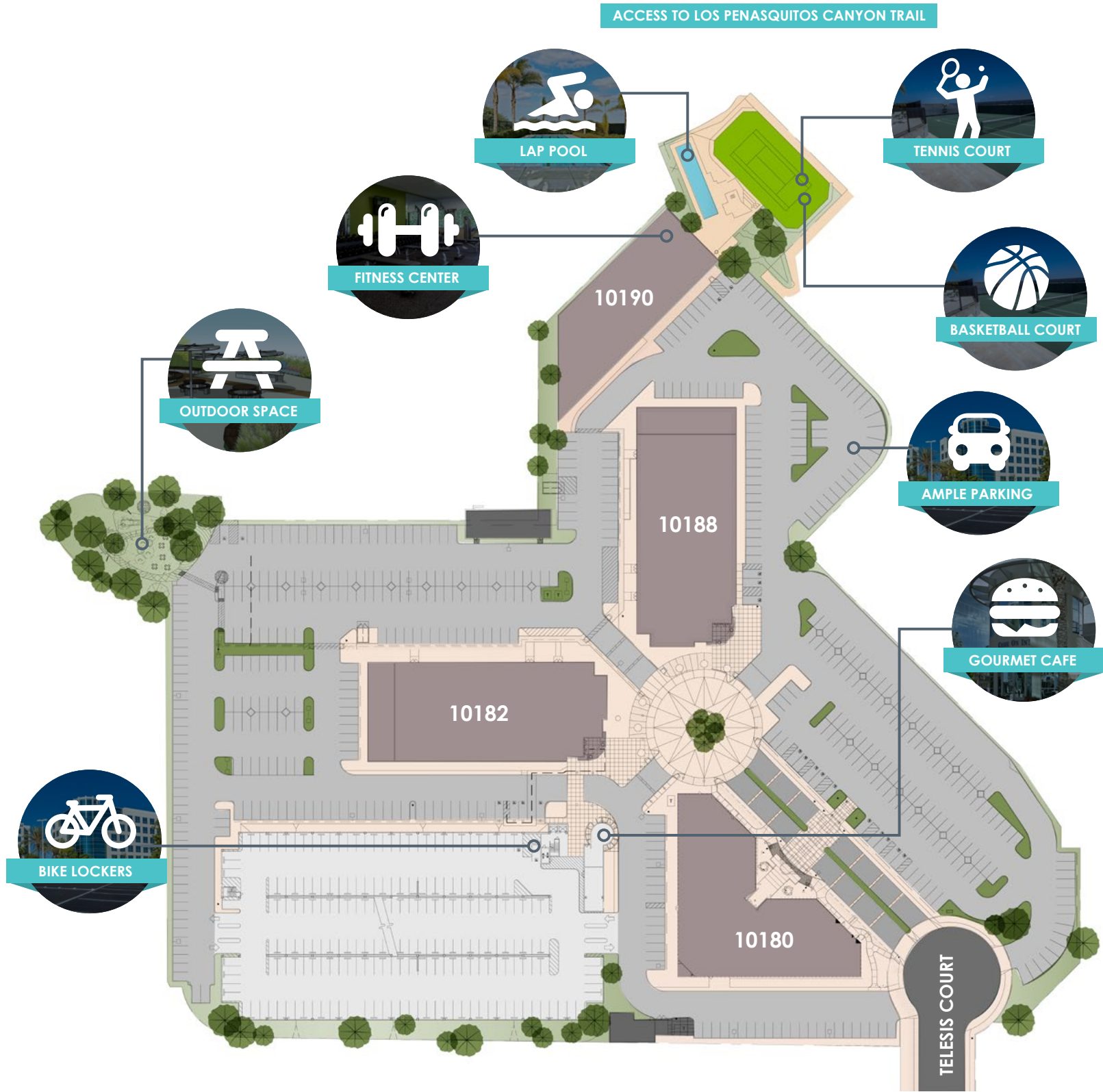
CURRENT BUILD-OUT

Creative free standing 2-story building with internal stairwell. Build-out consists of exposed ceilings, mix of open office and private offices, conference room, and collaborative break area.



amenities

ON-SITE AMENITIES





lap pool



tennis/basketball court



outdoor space



gourmet cafe



fitness center

ON-SITE AMENITIES

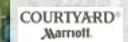
SURROUNDING AMENITIES



SEAVIEW CORPORATE CENTER

SORRENTO MESA CROSSROADS

- Nico's Taco Shop
- Submarina
- The Grill & Market
- Hanaya Sushi
- Sunrise Cafe
- Kings Garden Chinese Florist
- Day Care
- 805 Segue Body Wraps



SORRENTO PLAZA

- Crouton's
- Subway
- Rubio's
- Sher Punjab Indian
- Opera Cafe & Patisserie





EXIT





building specs



10180

10180 - 10190

SEAVIEW

10180 TELESIS COURT

Project Size:	93,242 SF
Year Built:	1984
Year Renovated:	2017
Stories:	5
Core Factor:	5.4% - 14.2%
IT Capabilities:	T1 & Fiber Optics
Construction:	Steel frame with curtain wall system
Elevators:	3 - 2,500 pound passenger elevators
Power:	2,000 Amps, 277/480-volt, 3 phase & 400 amp metered house panel
Zoning:	IP-2-1

10182 TELESIS COURT

Project Size:	122,798 SF
Year Built:	1999
Year Renovated:	2017
Stories:	6
Core Factor:	3.7% - 7.8%
IT Capabilities:	twTelecom, T1 & Fiber Optics
Construction:	Steel frame with EIFS and curtain wall system
Elevators:	2 - 2,500 pound passenger elevators & 1- 3,500 pound freight elevator
Power:	3,000 Amps, 277/480-volt, 3 phase & 600 amp house panel

10188 TELESIS COURT

Project Size:	122,874 SF
Year Built:	2001
Year Renovated:	2017
Stories:	6
Core Factor:	12.9% - 15%
IT Capabilities:	twTelecom, T1 & Fiber Optics
Construction:	Steel frame with EIFS and curtain wall system
Elevators:	2 - 2,500 pound passenger elevators & 1 - 3,500 pound freight elevator
Power:	3,000 Amps, 277/480-volt, 3 phase with 6 400 amps sub-panels

10190 TELESIS COURT

Project Size:	15,199 SF
Year Built:	1984
Year Renovated:	2014
Stories:	2
Core Factor:	14.6%
IT Capabilities:	T1 Lines
Construction:	Steel frame with curtain wall system
Power:	2,000 Amps, 277/480-volt, 3 phase
Zoning:	IP-2-1

seaview

CORPORATE CENTER

FOR MORE INFORMATION ON
THE PROJECT PLEASE CONTACT

BRETT WARD, LEED AP
858.546.5470
brett.ward@cushwake.com
CA Lic 01426040

BILL CAVANAGH
858.546.5460
bill.cavanagh@cushwake.com
CA Lic 00905262

MICHAEL CASSOLATO
858.546.5434
michael.cassolato@cushwake.com
CA Lic 01893847

ABOUT MANULIFE INVESTMENT MANAGEMENT

Manulife Investment Management is the global wealth and asset management segment of Manulife Financial Corporation. They draw on more than 150 years of financial stewardship to partner with clients across our institutional, retail, and retirement businesses globally.



12830 El Camino Real, Suite 100
San Diego, CA 92130
main +1 858 546 5400
fax +1 858 630 6320
www.cushmanwakefield.com

 **Manulife** Investment Management

[View Site Specific COVID-19 Prevention Plan](#)