



NOW LEASING

# UNION PARK

# 3

6985 UNION PARK AVENUE  
SALT LAKE CITY, UTAH



STANTON ROAD  
CAPITAL

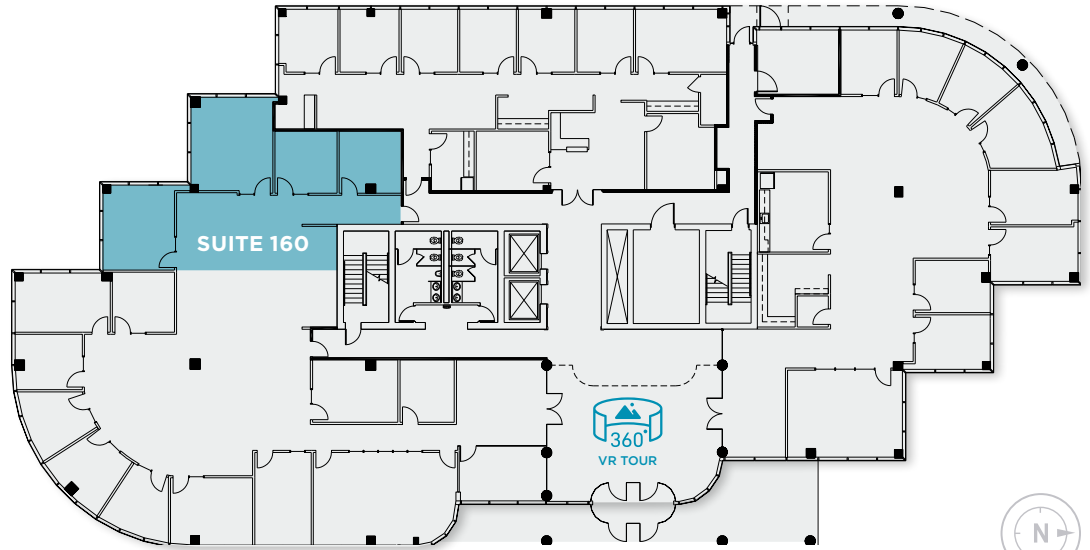
# UNION PARK 3

**\$28.50**

PSF, FULL SERVICE

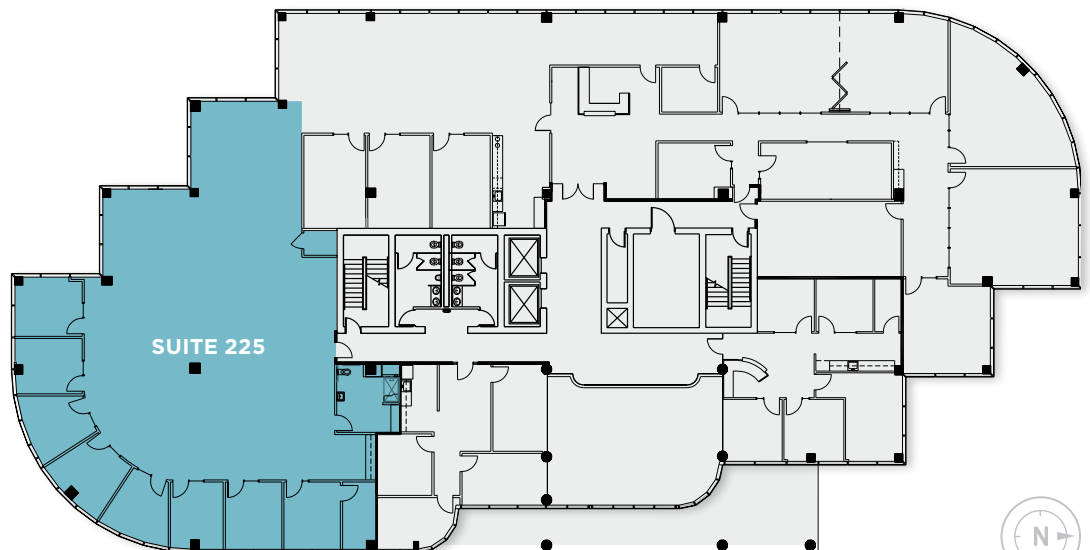
**CLASS A**  
FINISHES

Each **UNION PARK** building has a two-story open atrium lobby. The buildings have stunning views of the Salt Lake Valley. Covered parking is available and the buildings are equipped with high-speed fiber optic network and Internet connectivity, as well as centralized security and surveillance.



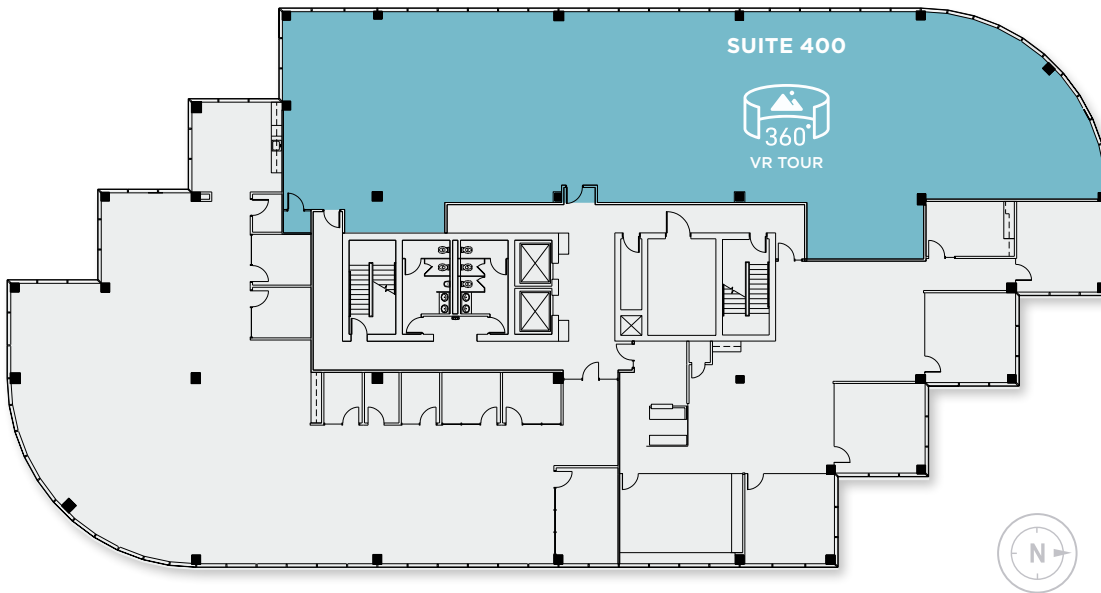
## FIRST FLOOR

Floor	Suite	Size	Available
1	160	1,579 RSF	Immediately



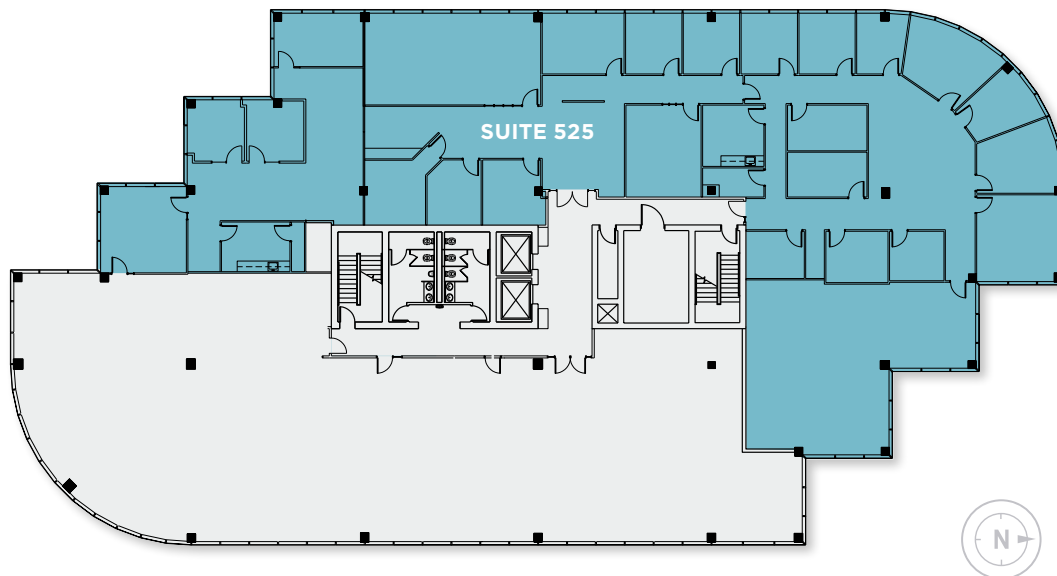
## SECOND FLOOR

Floor	Suite	Size	Available
2	225	4,589 RSF	90 Days Notice



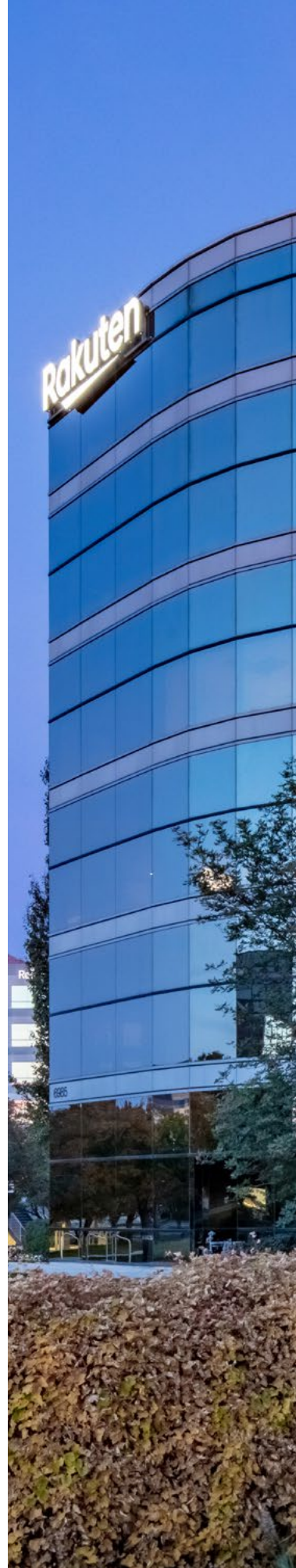
## FOURTH FLOOR

Floor	Suite	Size	Available
4	400	6,737 RSF	Immediately



## FIFTH FLOOR

Floor	Suite	Size	Available
5	525	11,032 RSF	Immediately



# UNION PARK 3



## SURROUNDING AREA

Conveniently located in the center of Salt Lake, within minutes of fine residential neighborhoods as well as the major freeway system, Fashion Place Mall and numerous restaurants and lodging.

**Dana Baird, ccim**  
Executive Managing Director  
+1 801 303 5526  
dana.baird@cushwake.com

**Mike Richmond**  
Executive Managing Director  
+1 801 303 5434  
mike.richmond@cushwake.com

**SRC**  
STANTON ROAD  
CAPITAL

**CUSHMAN & WAKEFIELD**  
170 South Main Street Suite 1600  
Salt Lake City, UT  
+1 801 322 2000 [cushmanwakefield.com](http://cushmanwakefield.com)