

**SPACES AVAILABLE
FROM ±18,000 SF
TO ±152,000 RSF**



FOR LEASE

AIRPORT TECHNOLOGY PARK

480 NORTH 2200 WEST ■ SALT LAKE CITY, UTAH



AIRPORT TECHNOLOGY PARK

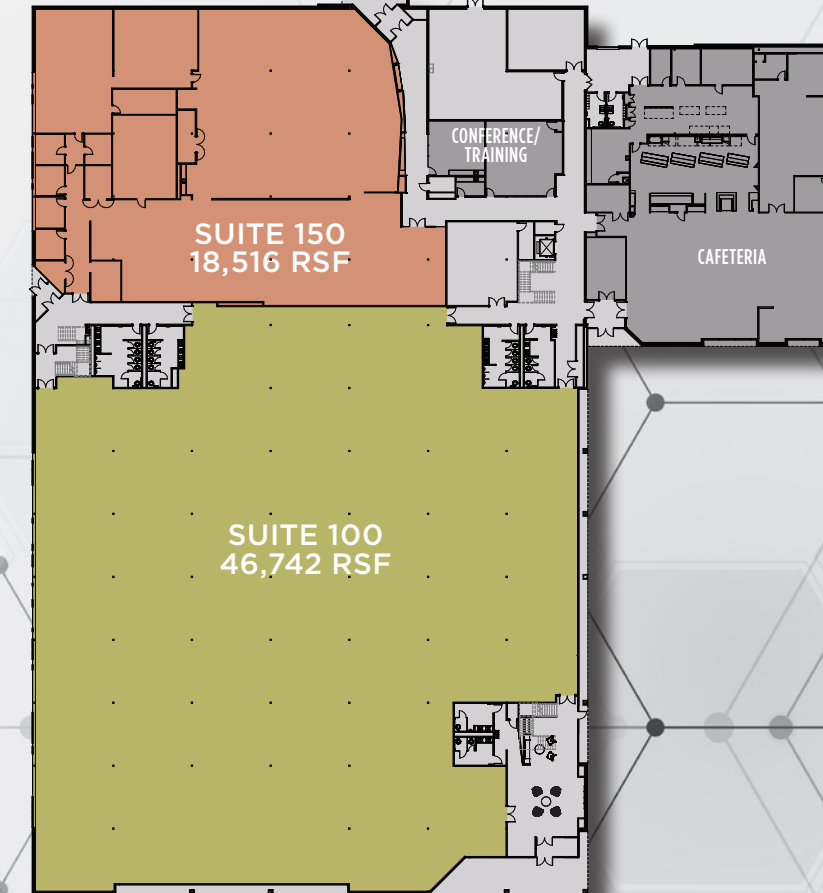
480 NORTH 2200 WEST ■ SALT LAKE CITY, UTAH

The **Airport Technology Park** is a 79 acre campus located just east of the Salt Lake City International Airport. The park is comprised of eight buildings totaling more than 1.4M square feet.

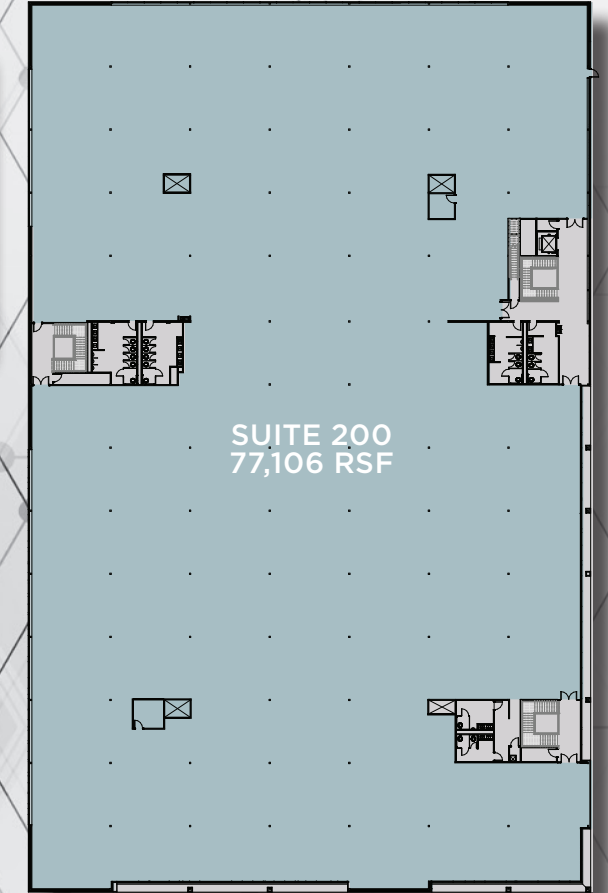
The Park has abundant power with on-site electrical switch and substations that provide redundant power to the campus at an estimated 25% cost savings. The property is served by both the northern and southern power grid, which greatly reduces the risk of outages. Added tenant generators and a UPS System further supplement an already robust electrical system.

FLOOR PLANS

FIRST FLOOR



SECOND FLOOR



BUILDING SPACES AVAILABLE

±18,000 RSF-
±152,432 RSF



SITE ELECTRICAL SERVICE

11,200 Amp
with 277/480
volt pad-mounted
transformer



SUPERIOR ACCESS TO

I-215 via
700 North
Immediate Freeway
access to I-215 and I-80



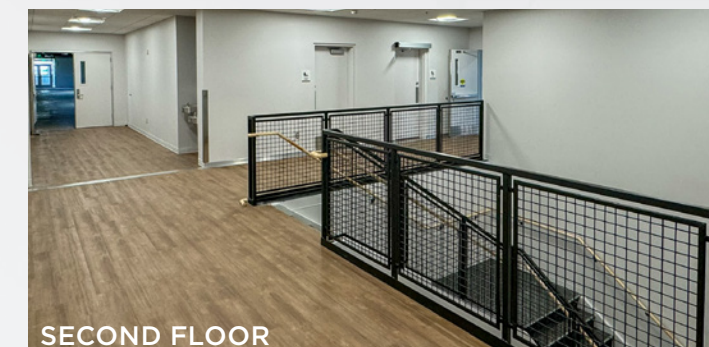
NEARBY TRANSPORTATION

Trax stop
with direct access to
Salt Lake City
International Airport



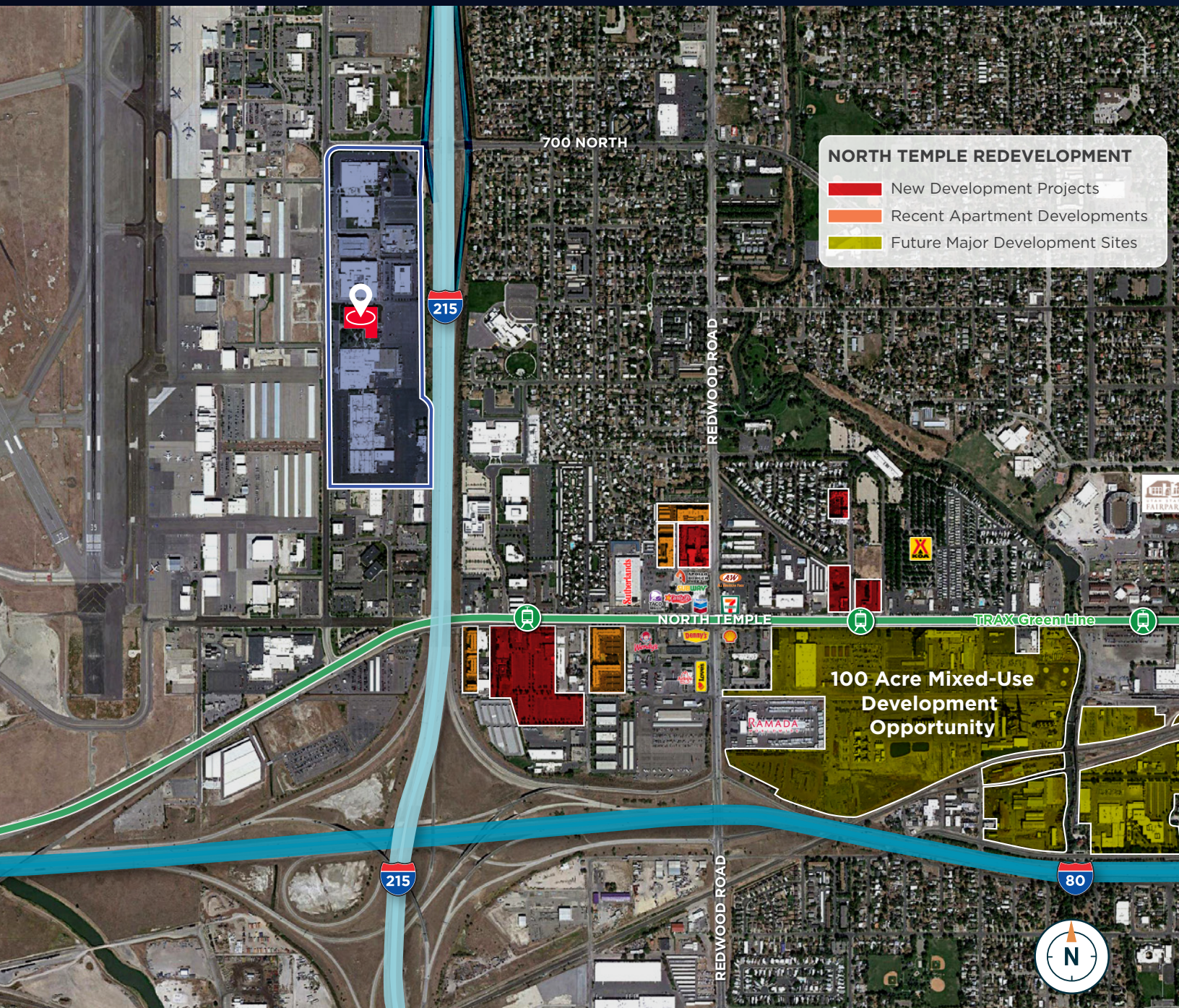
ADDITIONAL FEATURES

- **Full Service Cafeteria**
- **505 Parking Stalls**
- **Zoned M-1 (Light Manufacturing)**
- **\$21.00 Per Square Foot, NNN**
- **Within minutes of numerous restaurants, lodging, and the airport**
- **Crown signage available**
- **Site Electrical Service** 11,200 Amp with 277/480 volt pad-mounted transformer
- **Building Emergency System** 3,050kW, 4601.1 Amp service with above ground diesel storage and a 500KVA UPS System
- **HVAC System** Existing - Two (2) central hot water boilers at 2009 MBH total. Two (2) centrifugal chillers with cooling tower, 200 tons each.



AIRPORT TECHNOLOGY PARK

480 NORTH 2200 WEST ■ SALT LAKE CITY, UTAH



FOR ADDITIONAL INFORMATION, PLEASE CONTACT:

Mike Richmond

Executive Managing Director
+1 801 303 5434
mike.richmond@cushwake.com

Dana Baird, CCIM

Executive Managing Director
+1 801 303 5526
dana.baird@cushwake.com



170 South Main Street Suite 1600
Salt Lake City, UT 84101
cushmanwakefield.com