

LONE PEAK CENTER 2



11781 LONE PEAK PARKWAY | SALT LAKE CITY, UTAH

BUILDING FEATURES

- 46,239 RSF
- Adjacent to Central Park (“the Loop”) amenity
- 11,381 RSF Office space available

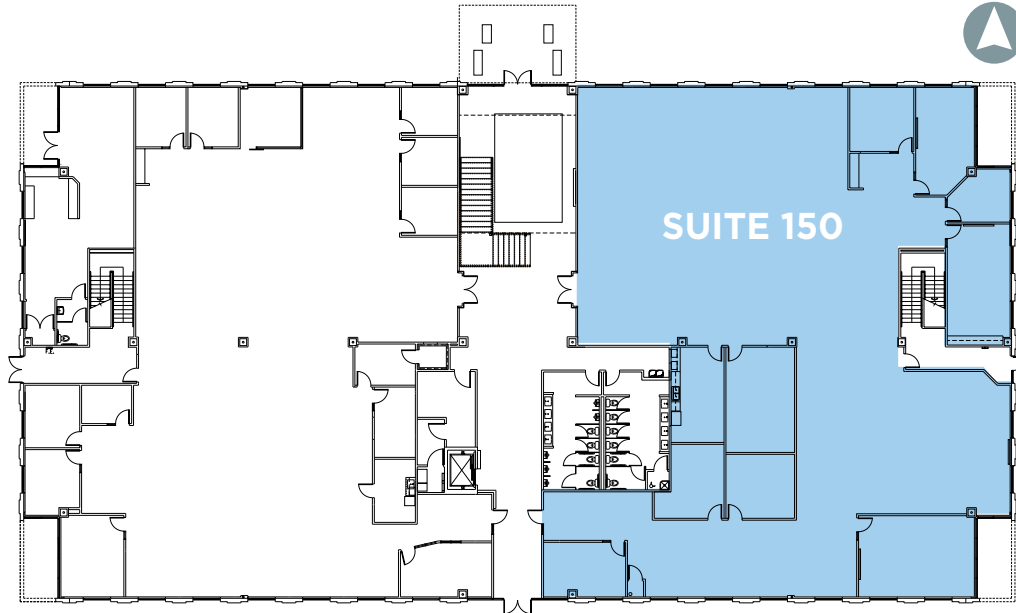


MAIER SIEBEL BABER



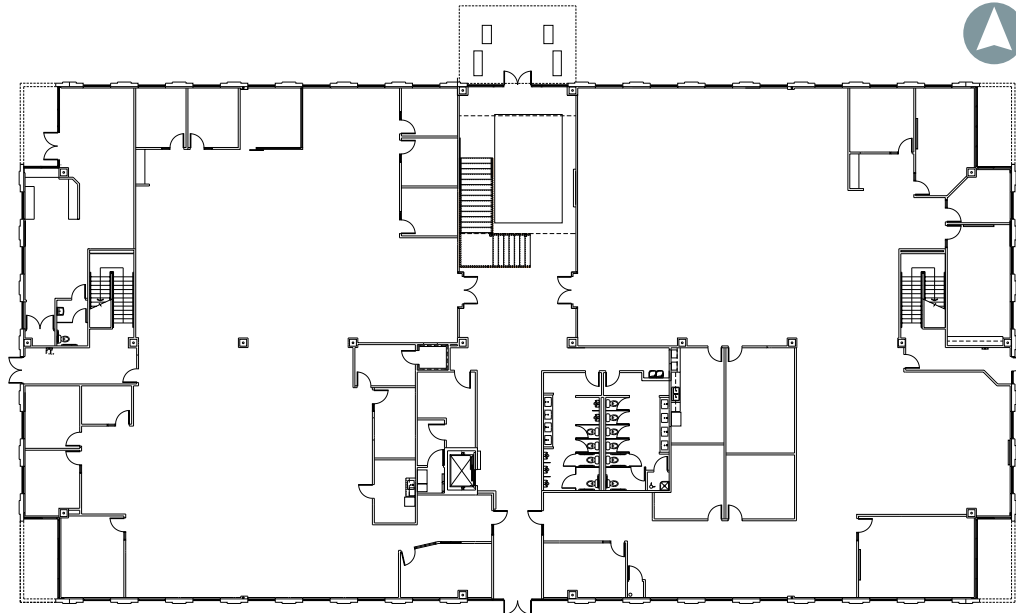
LONE PEAK CENTER 2

FIRST FLOOR



SUITE 150: 11,381 RSF

SECOND FLOOR



FULLY LEASED

FOR LEASING INFORMATION, PLEASE CONTACT:

DANA BAIRD, CCIM
Executive Managing Director
(801) 303 5526
dana.baird@cushwake.com

MIKE RICHMOND
Executive Managing Director
(801) 303 5434
mike.richmond@cushwake.com

 **CUSHMAN & WAKEFIELD**
MAIER SIEBEL BABER

LONE PEAK CENTER 3



11814 SOUTH ELECTION ROAD | SALT LAKE CITY, UTAH

BUILDING FEATURES

- 51,214 RSF
- 2,084 RSF on-site cafeteria space with patio (currently vacant)
- 7,317 RSF Office space available

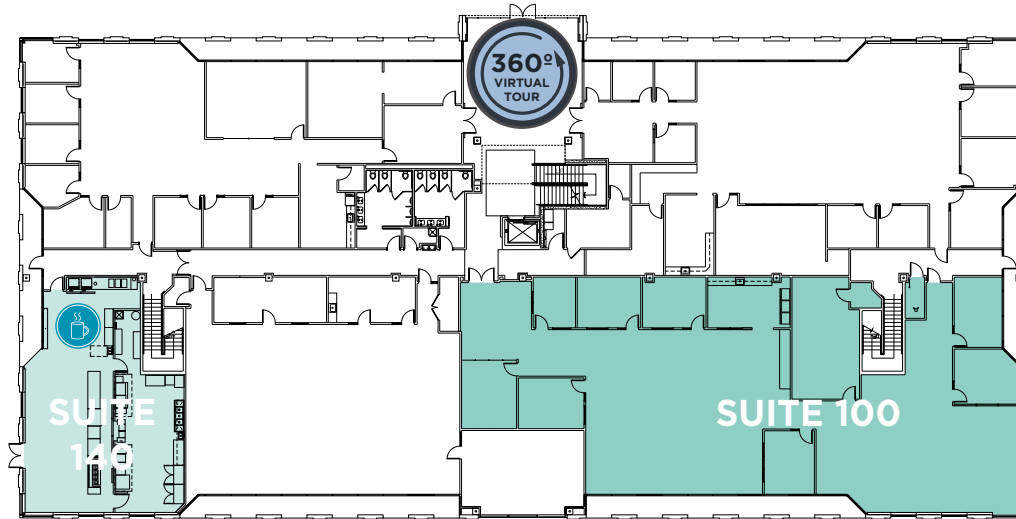


MAIER SIEBEL BABER



LONE PEAK CENTER 3

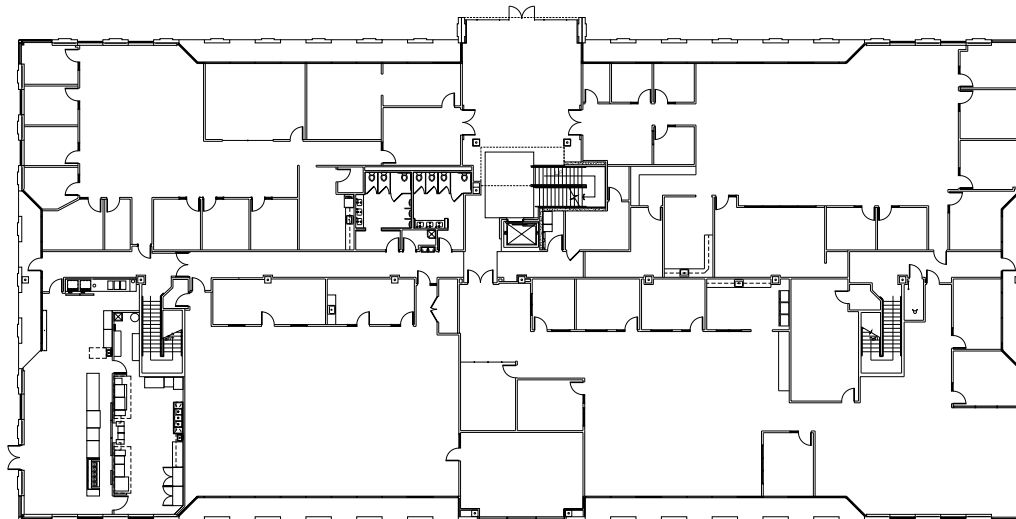
FIRST FLOOR



SUITE 100: 7,317 RSF
SUITE 140: 2,084 RSF - CAFETERIA SPACE



SECOND FLOOR



FULLY LEASED



FOR LEASING INFORMATION, PLEASE CONTACT:

DANA BAIRD, CCIM
Executive Managing Director
(801) 303 5526
dana.baird@cushwake.com

MIKE RICHMOND
Executive Managing Director
(801) 303 5434
mike.richmond@cushwake.com

 **CUSHMAN & WAKEFIELD**
MAIER SIEBEL BABER

LONE PEAK CENTER 4



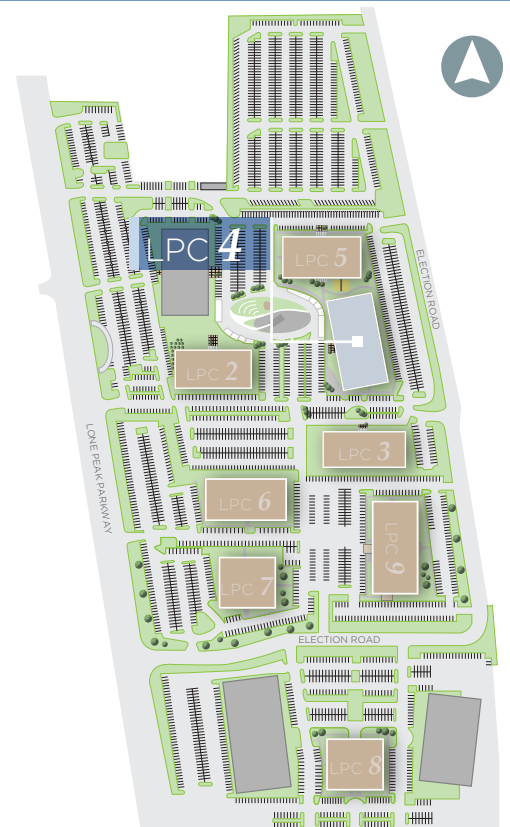
11778 SOUTH ELECTION ROAD | SALT LAKE CITY, UTAH

BUILDING FEATURES

- 56,999 RSF
- Conference Center/Tenant Lounge (currently under construction)
- Fitness Center with lockers and shower facilities
- Adjacent to Volleyball and Central Park ("the Loop") amenity
- Great freeway visibility

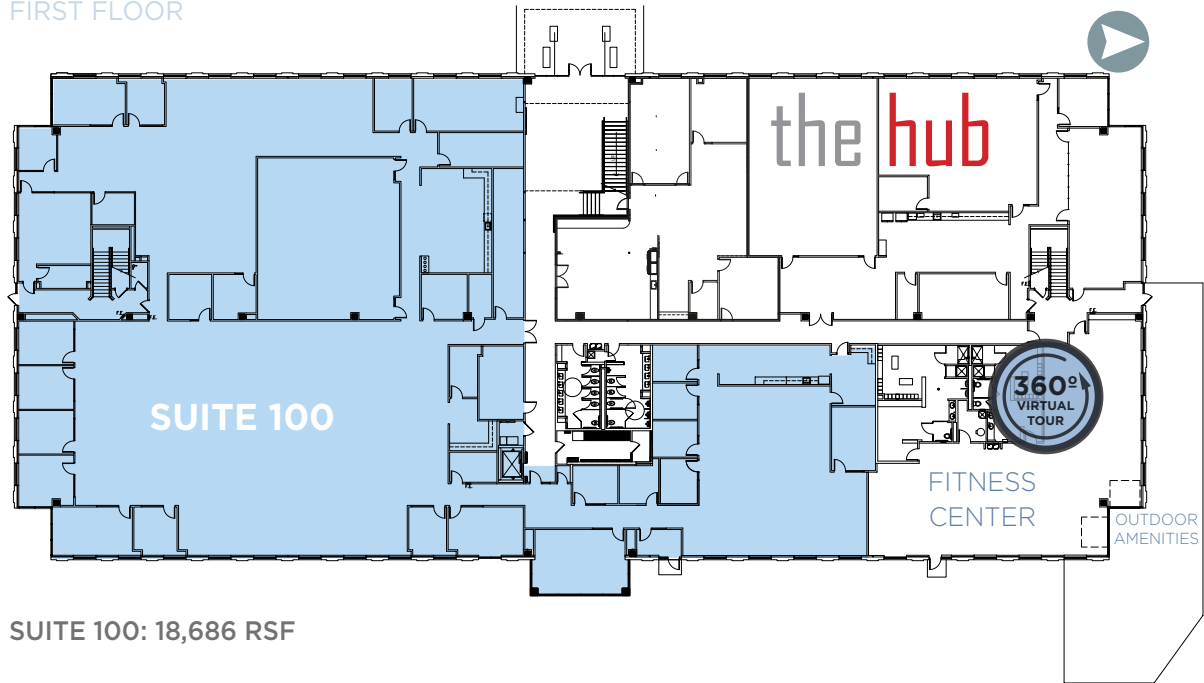


MAIER SIEBEL BABER



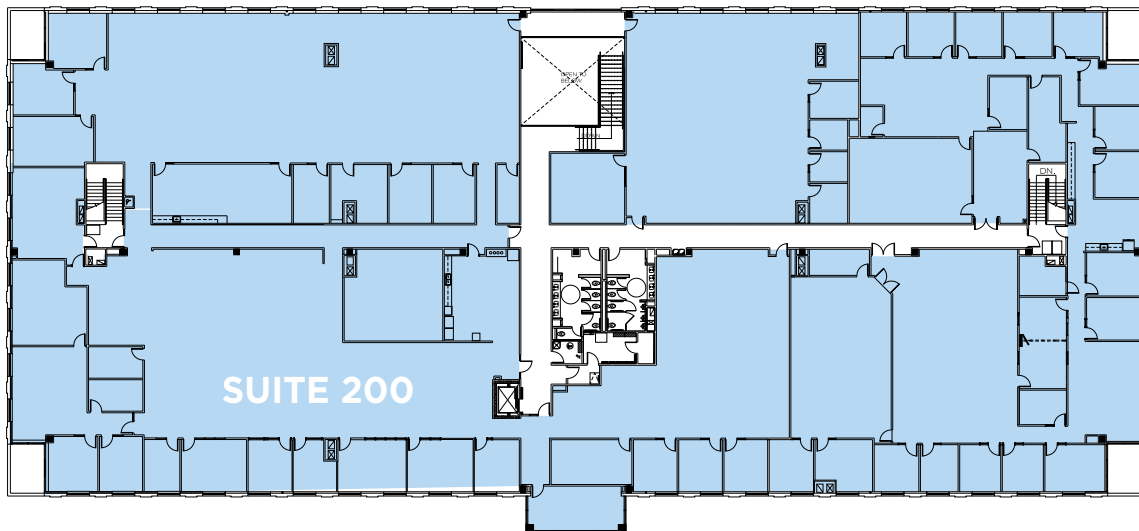
LONE PEAK CENTER 4

FIRST FLOOR



SUITE 100: 18,686 RSF

SECOND FLOOR



SUITE 200: 38,313 RSF

FOR LEASING INFORMATION, PLEASE CONTACT:

DANA BAIRD, CCIM
Executive Managing Director
(801) 303 5526
dana.baird@cushwake.com

MIKE RICHMOND
Executive Managing Director
(801) 303 5434
mike.richmond@cushwake.com

 **CUSHMAN & WAKEFIELD**
MAIER SIEBEL BABER

LONE PEAK CENTER 5



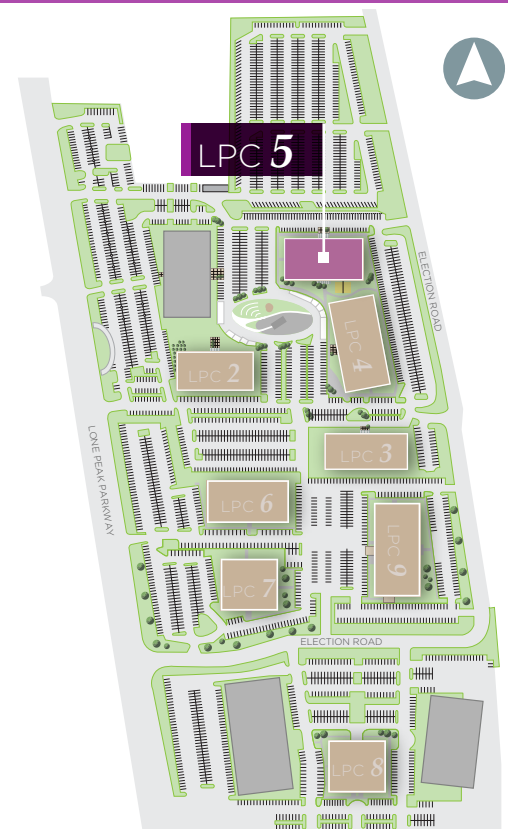
11734 SOUTH ELECTION ROAD | SALT LAKE CITY, UTAH

BUILDING FEATURES

- 51,820 RSF
- Adjacent to Volleyball and Central Park (“the Loop”) amenity
- Full Building Opportunity
- Great freeway visibility

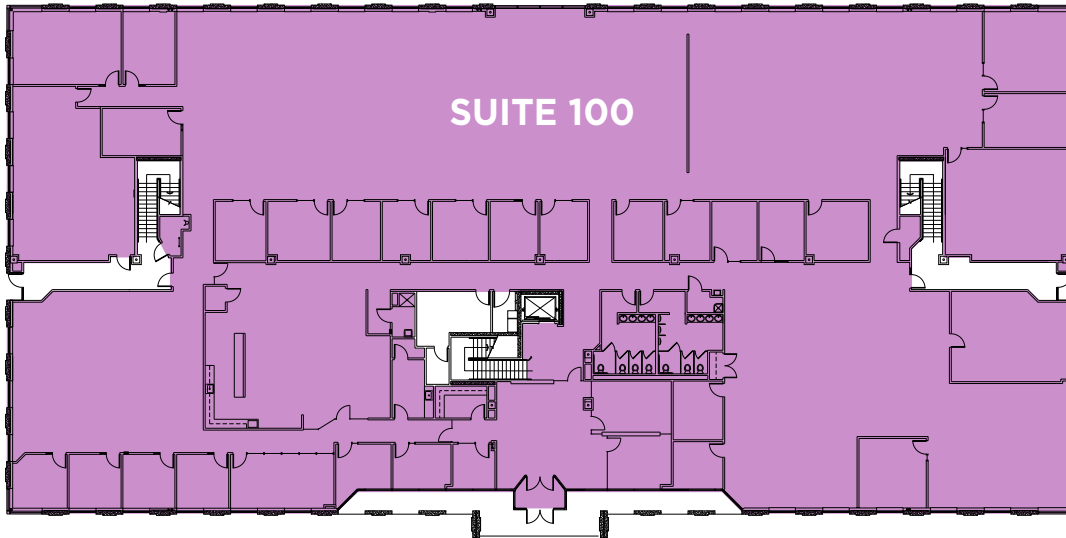


MAIER SIEBEL BABER



LONE PEAK CENTER 5

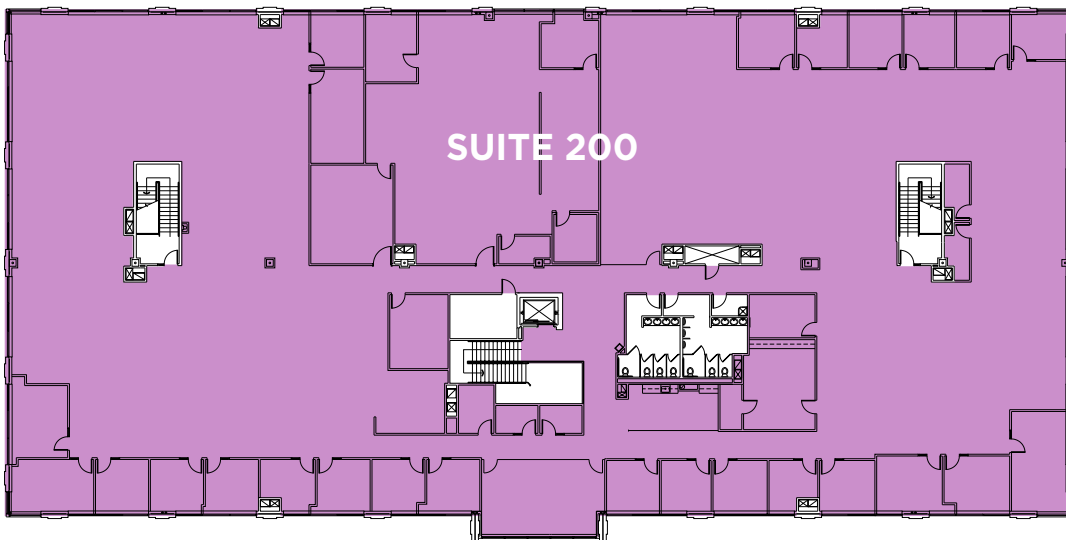
FIRST FLOOR



SUITE 100: 25,909 RSF



SECOND FLOOR



SUITE 200: 25,910 RSF



FOR LEASING INFORMATION, PLEASE CONTACT:

DANA BAIRD, CCIM
Executive Managing Director
(801) 303 5526
dana.baird@cushwake.com

MIKE RICHMOND
Executive Managing Director
(801) 303 5434
mike.richmond@cushwake.com

 **CUSHMAN &
WAKEFIELD**
MAIER SIEBEL BABER

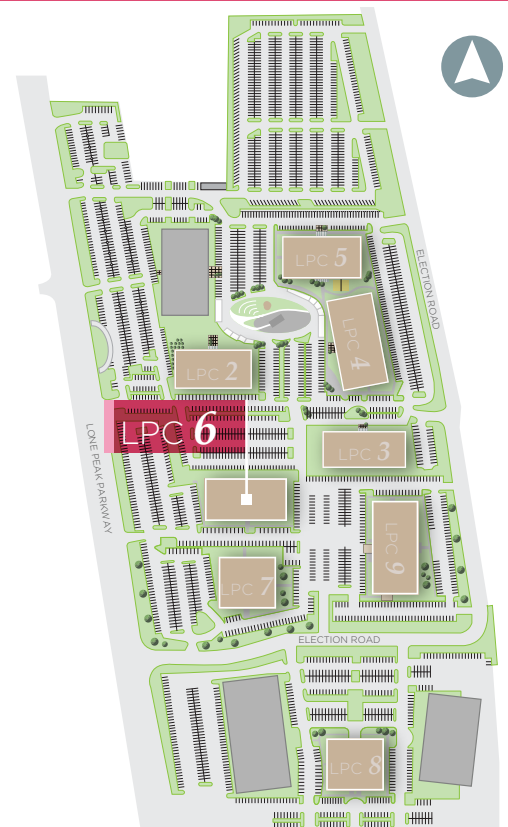
LONE PEAK CENTER 6



170 WEST ELECTION ROAD | SALT LAKE CITY, UTAH

BUILDING FEATURES

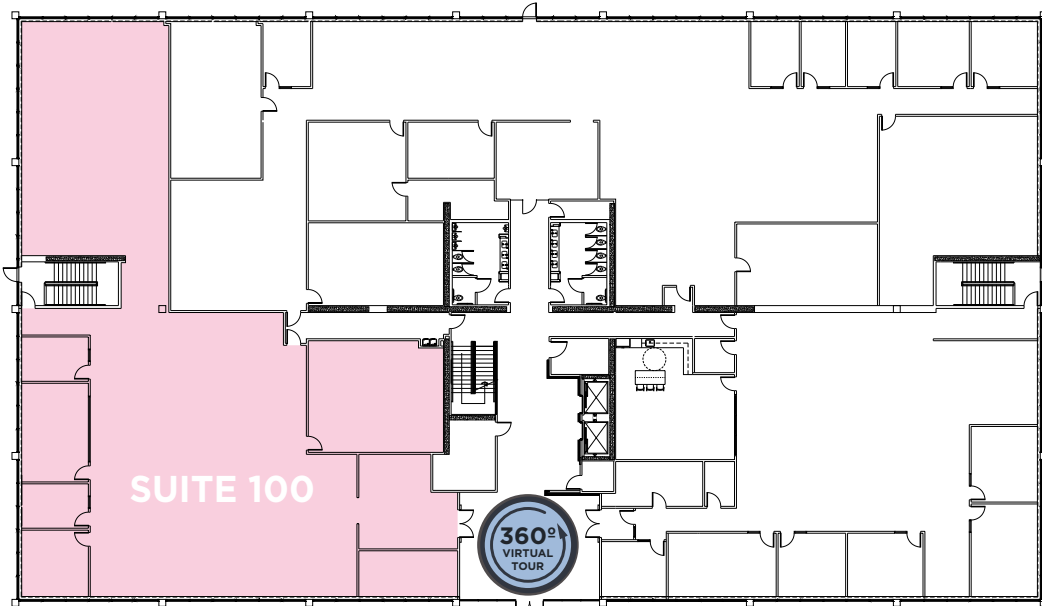
- 56,559 RSF
- 8,541 Furnished Spec Suite
- 15,921 RSF immediately available



MAIER SIEBEL BABER

LONE PEAK CENTER 6

FIRST FLOOR



SUITE 100: 8,541 RSF

FURNISHED



SECOND FLOOR



SUITE 230: 1,179 RSF

SUITE 250: 6,212 RSF



FOR LEASING INFORMATION, PLEASE CONTACT:

DANA BAIRD, CCIM
Executive Managing Director
(801) 303 5526
dana.baird@cushwake.com

MIKE RICHMOND
Executive Managing Director
(801) 303 5434
mike.richmond@cushwake.com

 **CUSHMAN & WAKEFIELD**
MAIER SIEBEL BABER

LONE PEAK CENTER 7



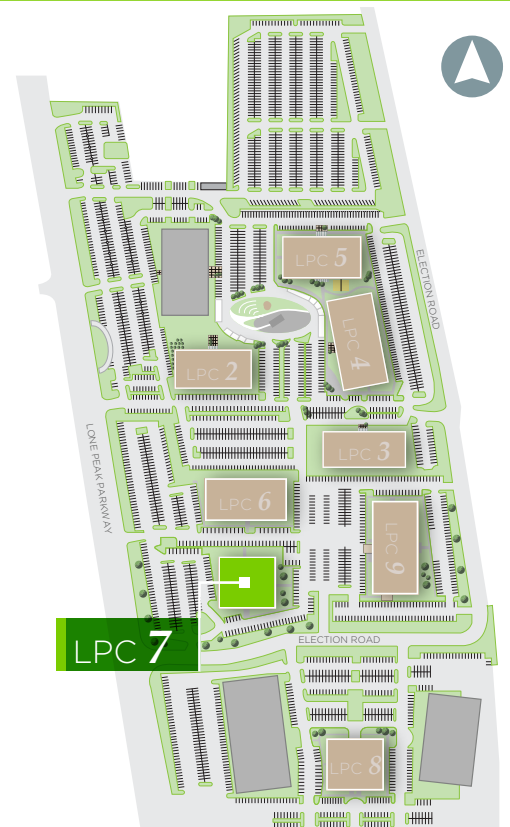
180 WEST ELECTION ROAD | SALT LAKE CITY, UTAH

BUILDING FEATURES

- 50,767 RSF
- Full floor opportunity (25,255 RSF)
- 34,366 RSF immediately available

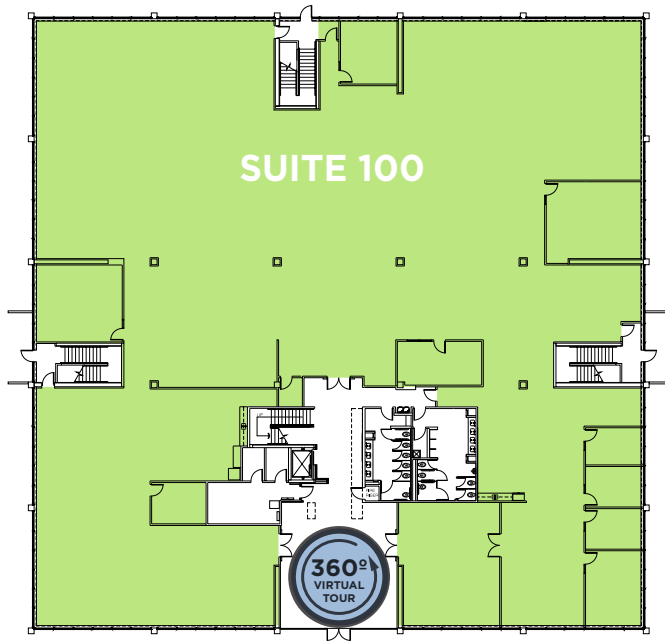


MAIER SIEBEL BABER



LONE PEAK CENTER 7

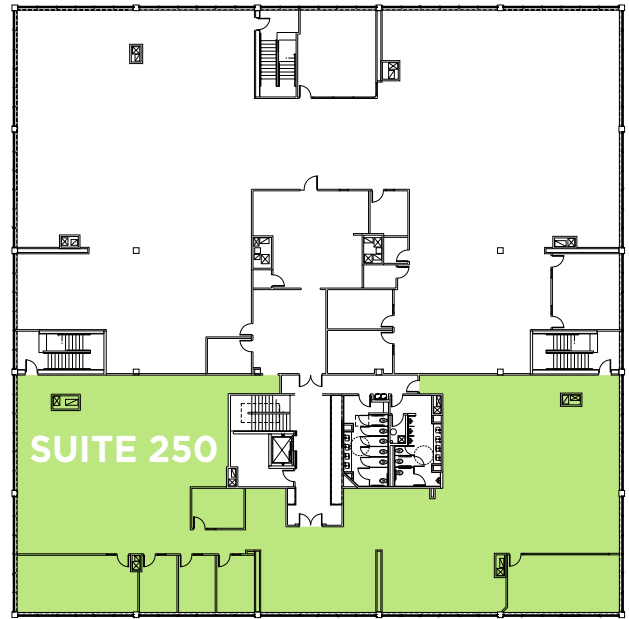
FIRST FLOOR



SUITE 100: 25,255 RSF



SECOND FLOOR



SUITE 250: 9,111 RSF



FOR LEASING INFORMATION, PLEASE CONTACT:

DANA BAIRD, CCIM
Executive Managing Director
(801) 303 5526
dana.baird@cushwake.com

MIKE RICHMOND
Executive Managing Director
(801) 303 5434
mike.richmond@cushwake.com

 **CUSHMAN &
WAKEFIELD**
MAIER SIEBEL BABER

LONE PEAK CENTER 8



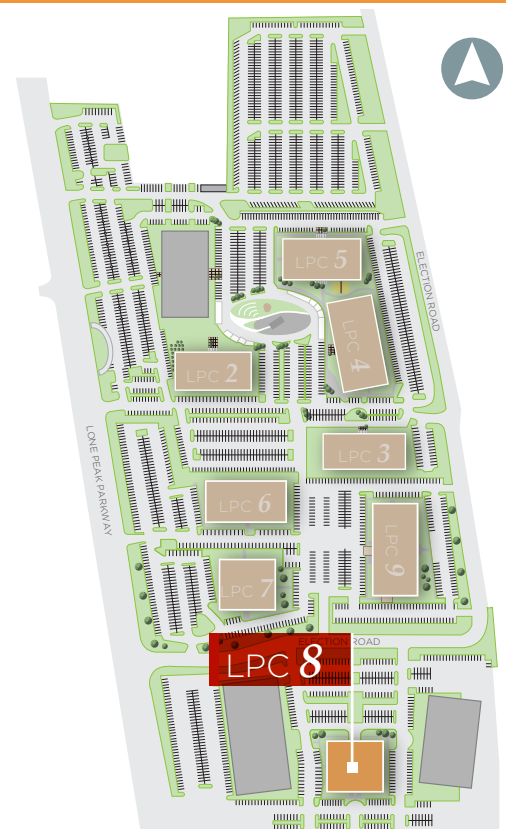
147 WEST ELECTION ROAD | SALT LAKE CITY, UTAH

BUILDING FEATURES

- 50,176 RSF
- 11,318 RSF immediately available
- Locker room and showers

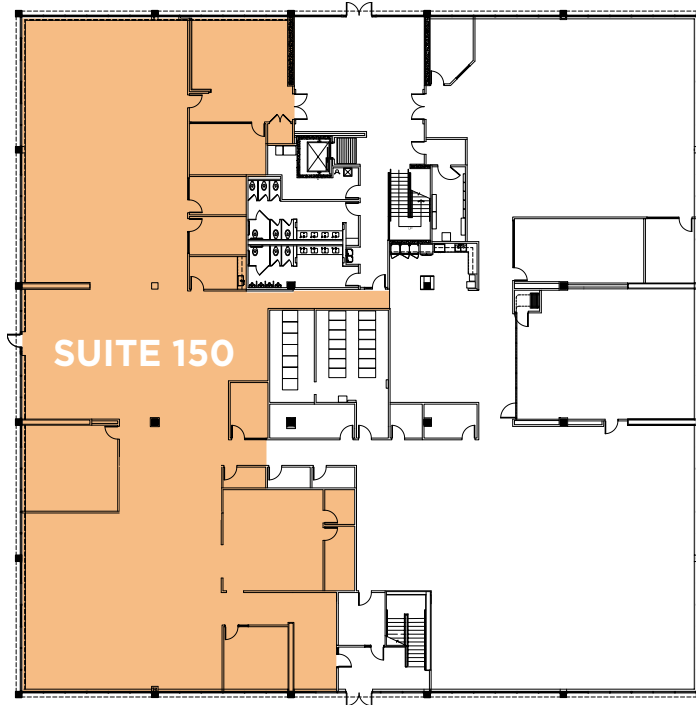


MAIER SIEBEL BABER



LONE PEAK CENTER 8

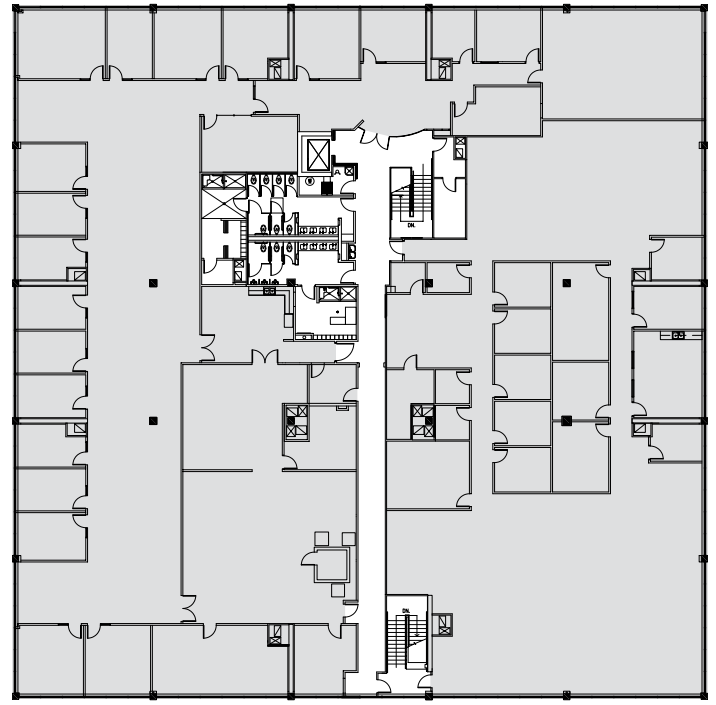
FIRST FLOOR



SUITE 150: 11,318 RSF



SECOND FLOOR



FULLY LEASED



FOR LEASING INFORMATION, PLEASE CONTACT:

DANA BAIRD, CCIM
Executive Managing Director
(801) 303 5526
dana.baird@cushwake.com

MIKE RICHMOND
Executive Managing Director
(801) 303 5434
mike.richmond@cushwake.com

 **CUSHMAN &
WAKEFIELD**
MAIER SIEBEL BABER