

# FOR LEASE SOUTH TOWNE II

10150 South Centennial Parkway  
Sandy, Utah 84070



## EXTERIOR RENOVATIONS UNDERWAY!

### PROPERTY HIGHLIGHTS

- 1,998 to 59,994 RSF
- Lease Rate: \$17.75 NNN
- Immediately Available
- Extraordinary Parking: 6/1,000 RSF
- Back-up Generator
- On-site Showers
- Crown Signage Available
- Exterior Renovations Underway



Contact  
**JUSTIN BAILEY**  
Director  
+1 801 303 5493  
justin.bailey@cushwake.com

170 South Main Street  
Suite 1600  
Salt Lake City, UT 84101  
Main +1 801 322 2000  
cushmanwakefield.com

# FLOOR PLANS

10150 South Centennial Parkway  
Sandy, UT

FIRST FLOOR 6,040 RSF (FURNITURE AVAILABLE)  
FIRST FLOOR 6,016 RSF



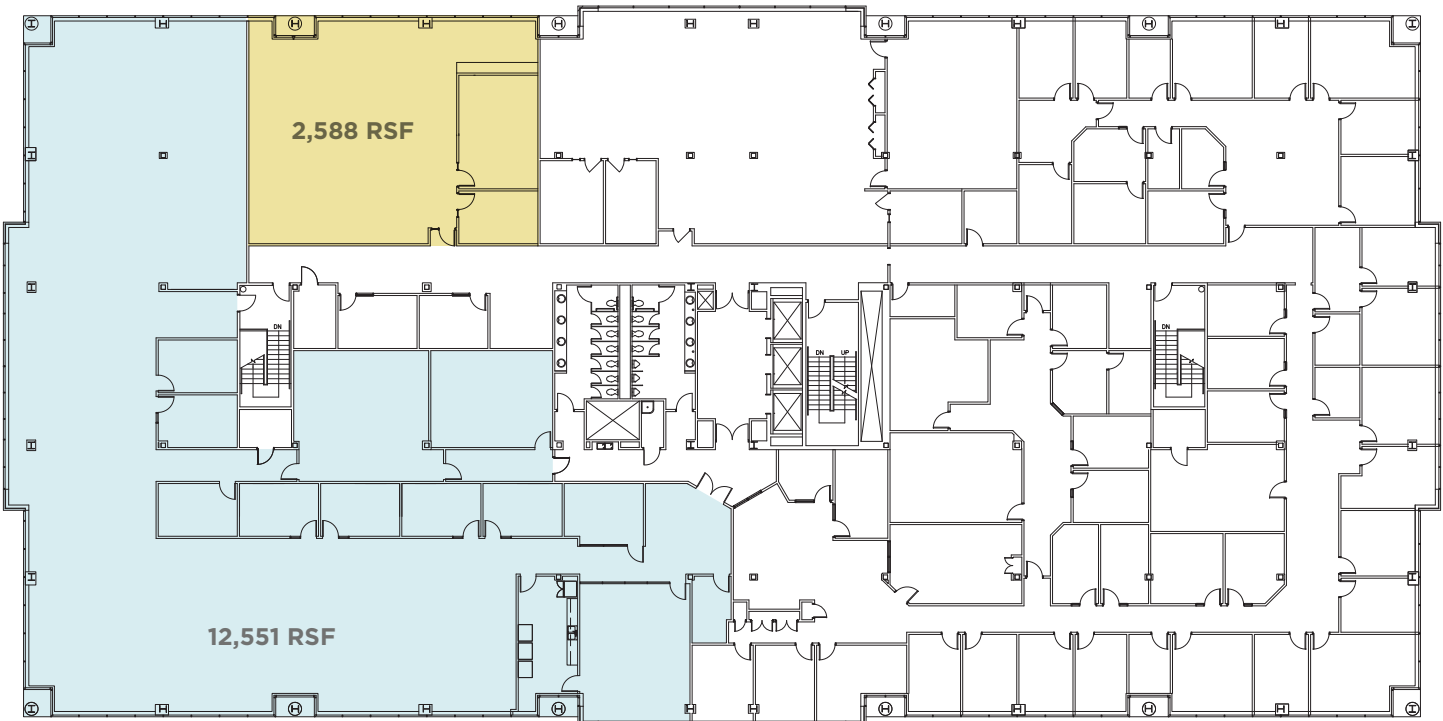
SECOND FLOOR 1,998 TO 17,841 RSF AVAILABLE (WILL DEMISE)



THIRD FLOOR 2,500 TO 14,958 RSF AVAILABLE (WILL DEMISE)

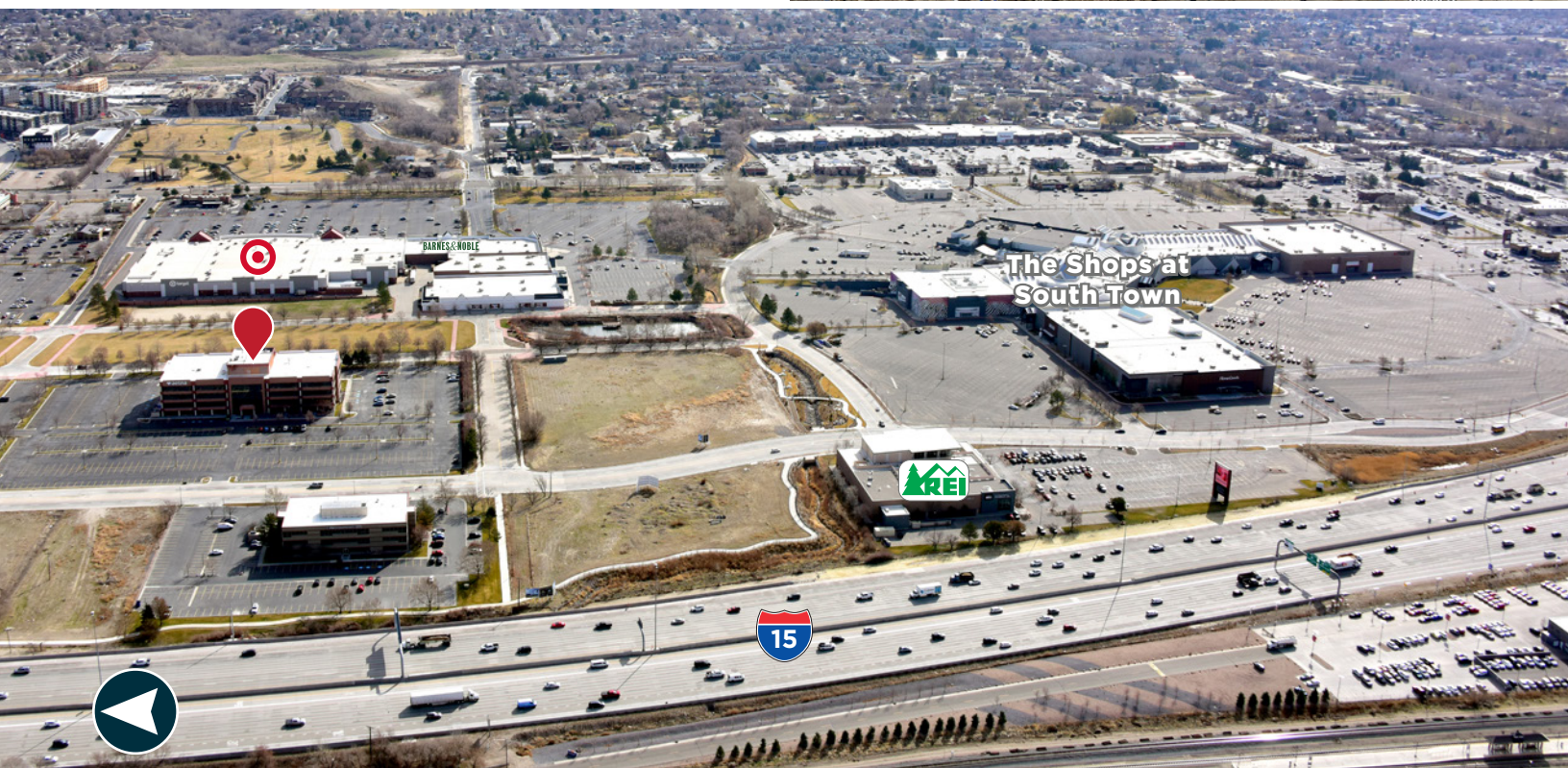


FOURTH FLOOR 2,588 TO 15,139 RSF AVAILABLE (WILL DEMISE)



# FOR LEASE SOUTH TOWNE II

10150 South Centennial Parkway  
Sandy, Utah 84070



## Contact

**JUSTIN BAILEY**

Director

+1 801 303 5493

[justin.bailey@cushwake.com](mailto:justin.bailey@cushwake.com)

170 South Main Street  
Suite 1600  
Salt Lake City, UT 84101  
Main +1 801 322 2000  
[cushmanwakefield.com](http://cushmanwakefield.com)