

FOR SUBLEASE

10150 South Centennial Parkway
Sandy, Utah 84070



SOUTH TOWNE II

PROPERTY HIGHLIGHTS

- 12,464 RSF
- Rate - \$21.95 FS
- Fully Plug and Play with 68 workstations
- Brand new build-out-never occupied
- Extraordinary Parking: 6/1,000 RSF
- Available Immediately
- Back-up Generator
- On-site Showers
- Lease Expiration 6/30/2030
- Adjacent space available for expansion



Contact

JUSTIN BAILEY

Director

+1 801 303 5493

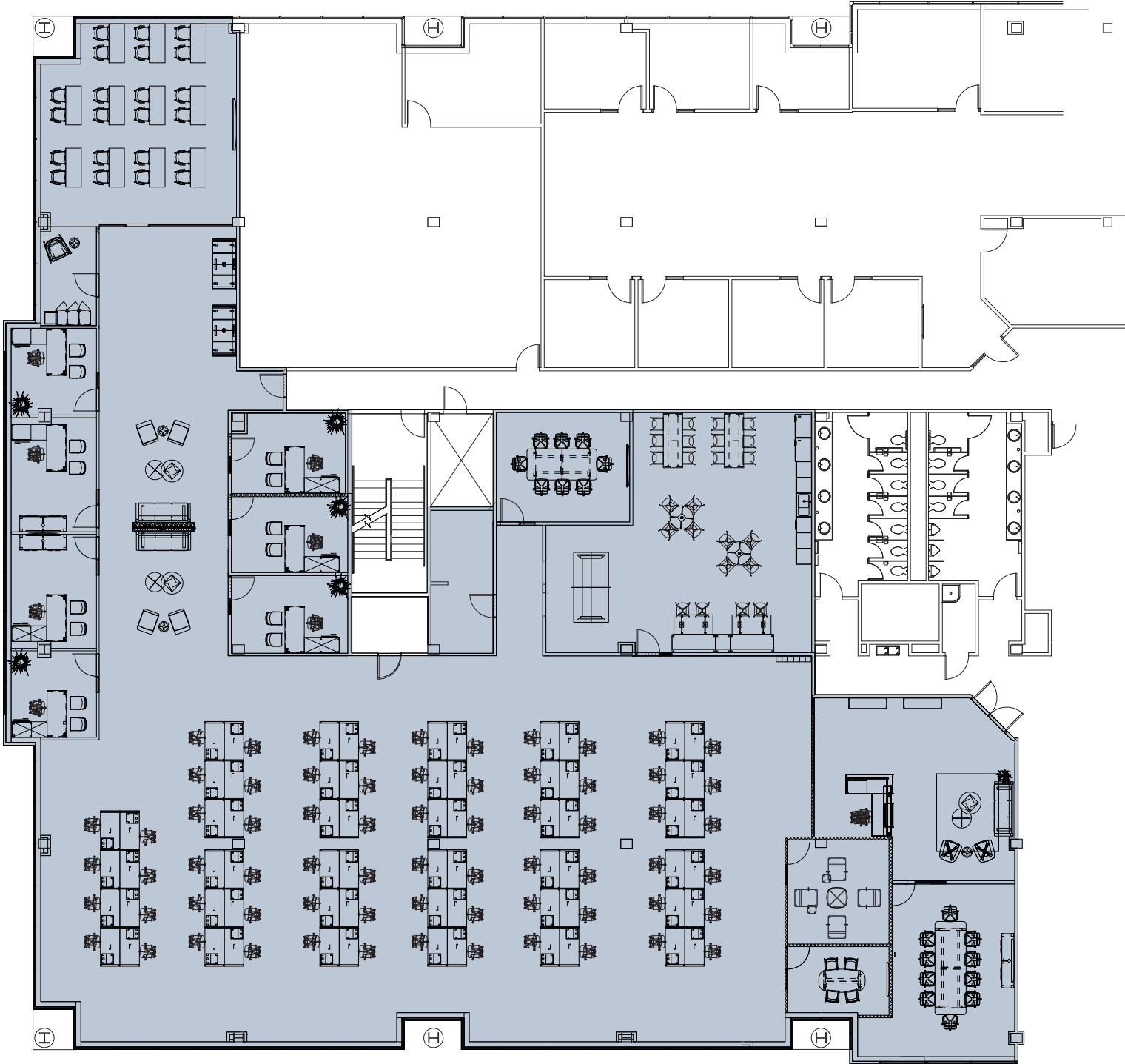
justin.bailey@cushwake.com

170 South Main Street
Suite 1600
Salt Lake City, UT 84101
Main +1 801 322 2000
cushmanwakefield.com

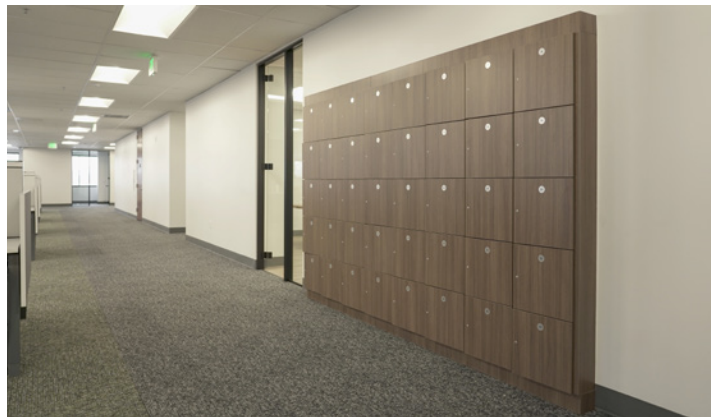
FOR SUBLEASE
10150 South Centennial Parkway
Sandy, Utah 84070

SECOND FLOOR

12,464 SF



JUSTIN BAILEY
Director
+1 801 303 5493
justin.bailey@cushwake.com



FOR SUBLEASE

10150 South Centennial Parkway
Sandy, Utah 84070



Contact

JUSTIN BAILEY

Director

+1 801 303 5493

justin.bailey@cushwake.com

170 South Main Street
Suite 1600
Salt Lake City, UT 84101
Main +1 801 322 2000
cushmanwakefield.com