

FOR LEASE SOUTH TOWNE II

10150 South Centennial Parkway
Sandy, Utah 84070



EXTERIOR RENOVATIONS UNDERWAY!

PROPERTY HIGHLIGHTS

- 1,998 to 48,525 RSF
- Lease Rate: \$17.75 NNN
- Immediately Available
- Extraordinary Parking: 6/1,000 RSF
- Back-up Generator
- On-site Showers
- Crown Signage Available
- Exterior Renovations Underway



Contact
JUSTIN BAILEY
Director
+1 801 303 5493
justin.bailey@cushwake.com

170 South Main Street
Suite 1600
Salt Lake City, UT 84101
Main +1 801 322 2000
cushmanwakefield.com

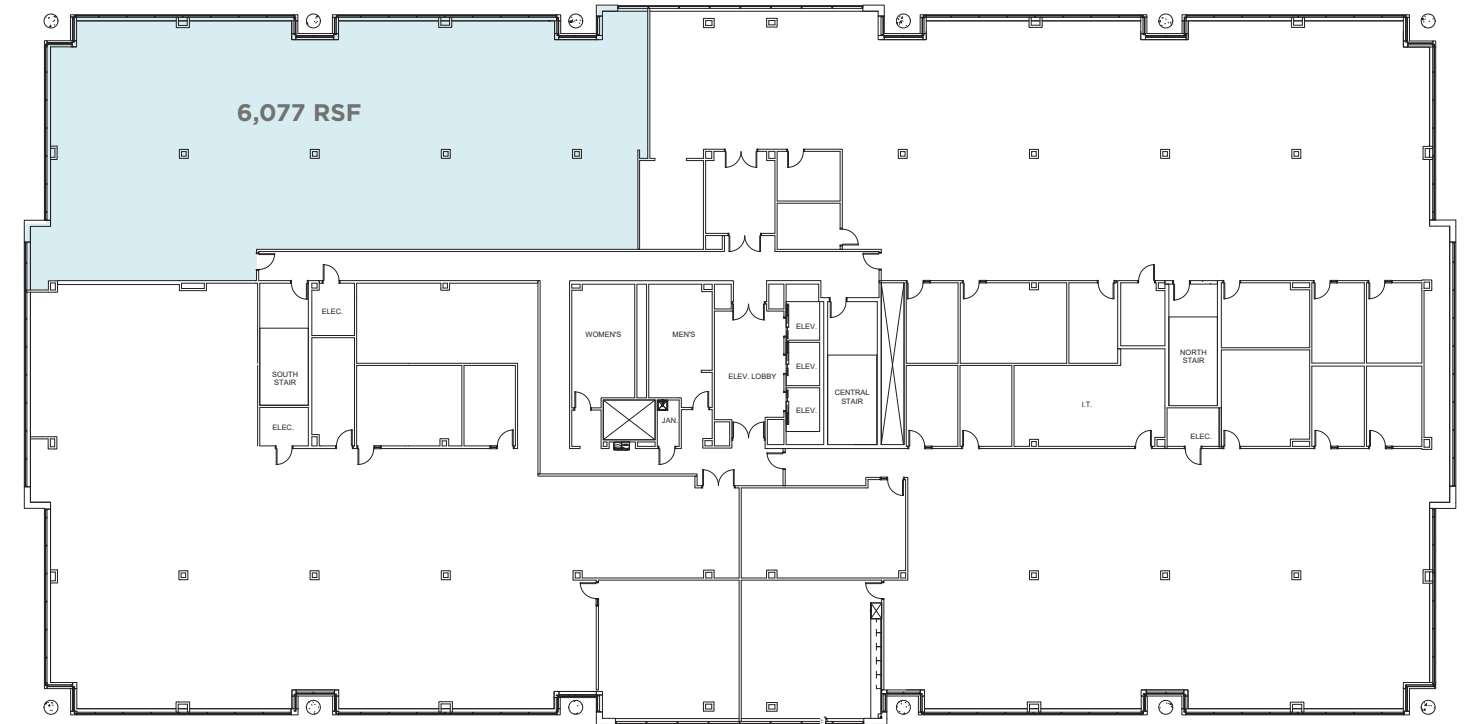
FLOOR PLANS

10150 South Centennial Parkway
Sandy, UT

FIRST FLOOR 6,040 RSF (FURNITURE AVAILABLE)
FIRST FLOOR 6,016 RSF



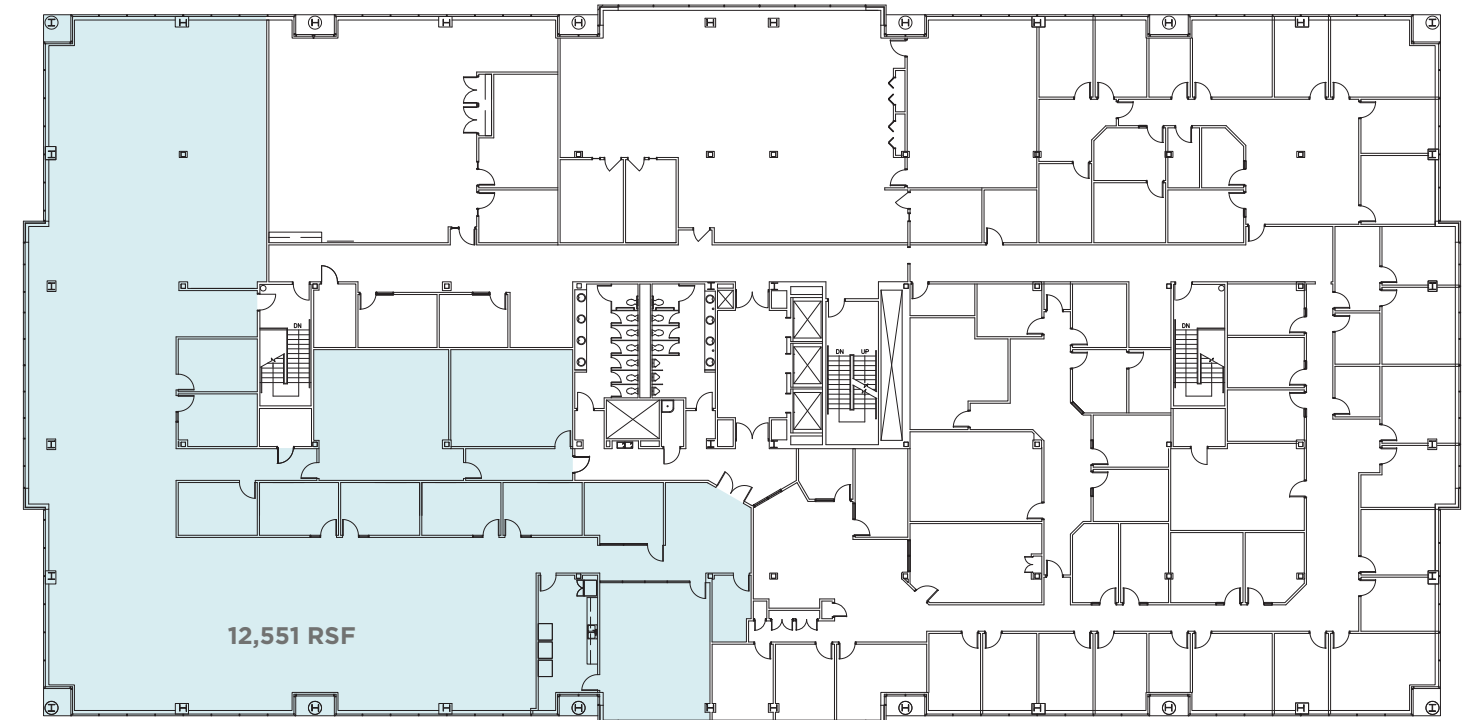
THIRD FLOOR 2,500 TO 6,077 RSF AVAILABLE (WILL DEMISE)



SECOND FLOOR 1,998 TO 17,841 RSF AVAILABLE (WILL DEMISE)



FOURTH FLOOR 3,000 TO 12,551 RSF AVAILABLE (WILL DEMISE)



FOR LEASE SOUTH TOWNE II

10150 South Centennial Parkway
Sandy, Utah 84070



Contact

JUSTIN BAILEY

Director

+1 801 303 5493

justin.bailey@cushwake.com

170 South Main Street
Suite 1600
Salt Lake City, UT 84101
Main +1 801 322 2000
cushmanwakefield.com