

THE POINTE

25 EAST SCENIC POINTE DRIVE | DRAPER, UT

NOW LEASING



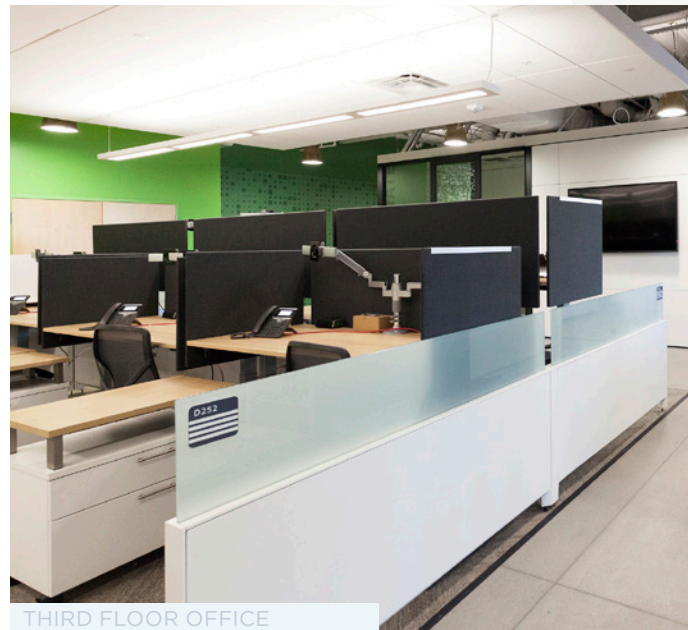
CUSHMAN &
WAKEFIELD

THE POINTE

- Four-story office building totaling approx. 118,400 RSF
- Up to 60,000 SF contiguous
- **Highly efficient** floor plates averaging 30,000 RSF
- Superior freeway **visibility** and access
- **Class A Office** Building located at the Point of the Mountain with access to both Utah and Salt Lake Counties
- Rates between **\$21.00 - \$26.50** per RSF, Full Service
- Parking Ratio **4/1,000 SF** surface parking
- **Panoramic views** from the Point of the Mountain



THIRD FLOOR LOBBY



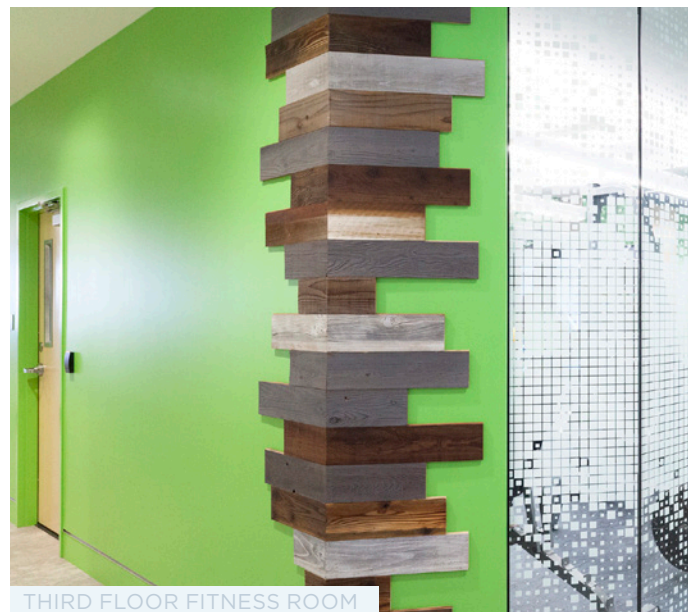
THIRD FLOOR OFFICE



CONFERENCE ROOMS



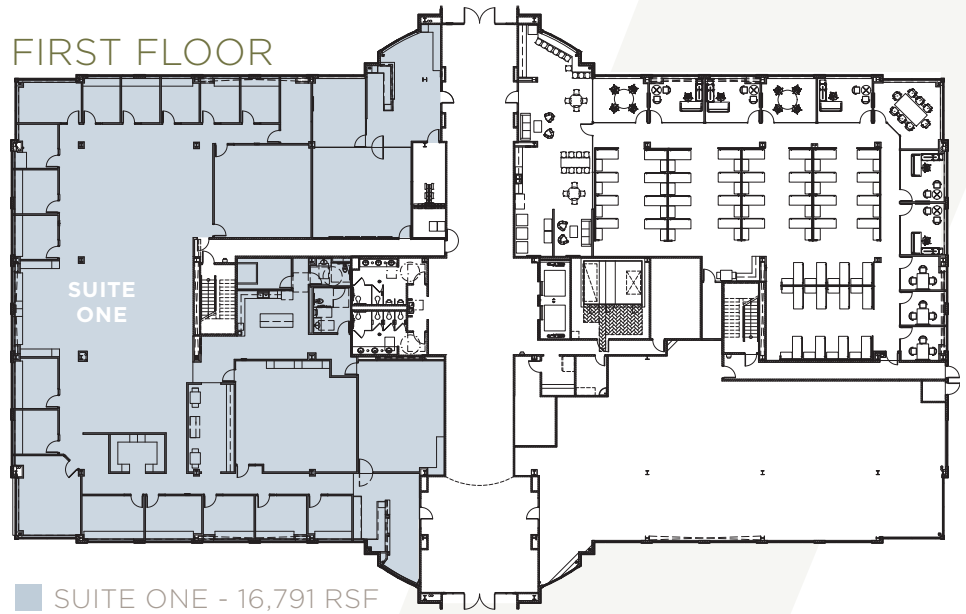
INTERIOR WALKWAY



THIRD FLOOR FITNESS ROOM



FIRST FLOOR

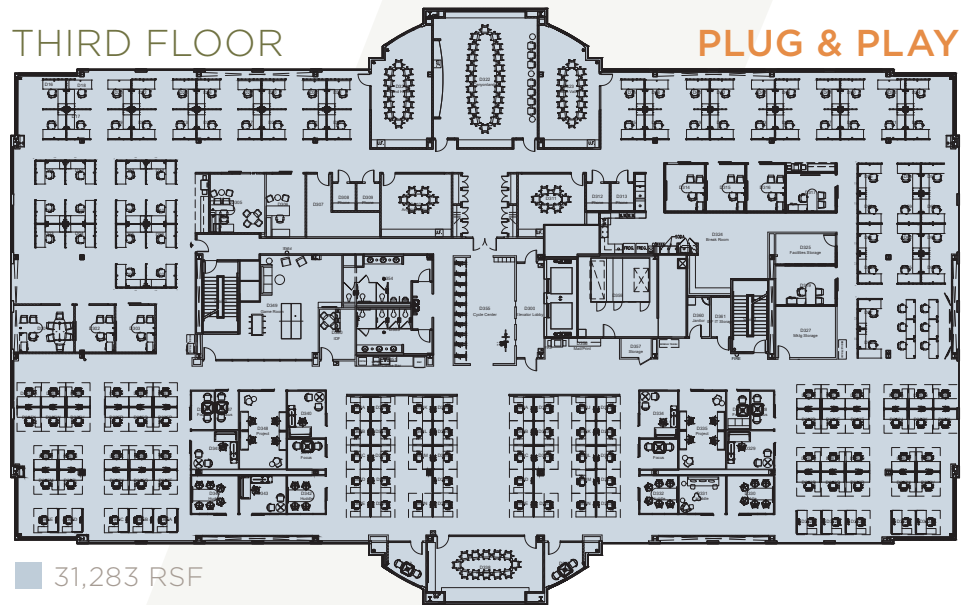


■ SUITE ONE - 16,791 RSF



THIRD FLOOR

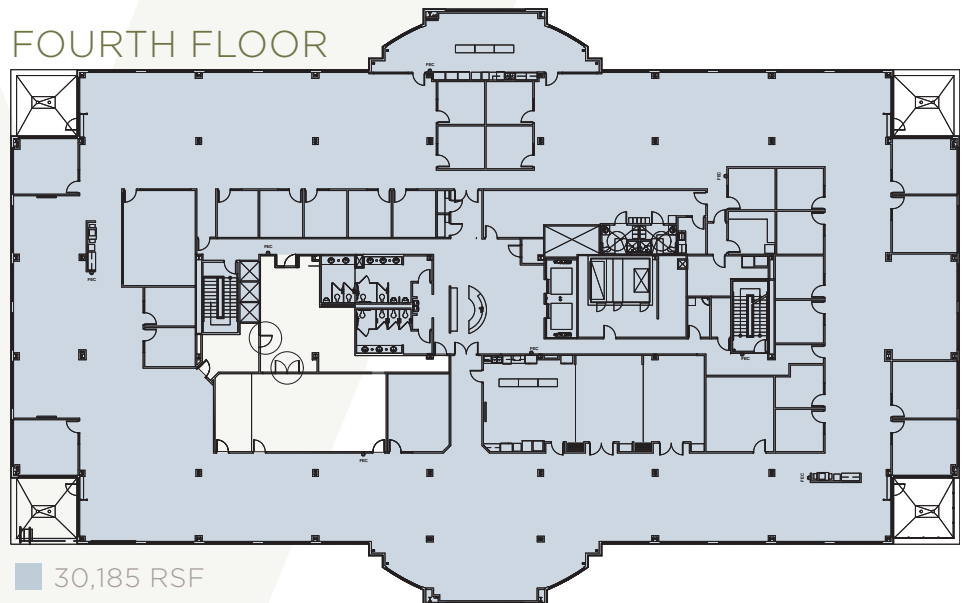
PLUG & PLAY



■ 31,283 RSF



FOURTH FLOOR



■ 30,185 RSF

THE POINTE

25 EAST SCENIC POINTE DRIVE | DRAPER, UT



**SOUTH JORDAN
FRONTRUNNER
STATION**



**ONE-MINUTE
ACCESS TO
INTERSTATE 15**



DANA BAIRD, CCIM
Executive Managing Director
+1 801 303 5526
dana.baird@cushwake.com

MIKE RICHMOND
Executive Managing Director
+1 801 303 5434
mike.richmond@cushwake.com

CUSHMAN & WAKEFIELD
170 South Main Street Suite 1600
Salt Lake City, UT
+1 801 322 2000
cushmanwakefield.com

Cushman & Wakefield Copyright 2021. No warranty or representation, express or implied, is made to the accuracy or completeness of the information contained herein, and same is submitted subject to errors, omissions, change of price, rental or other conditions, withdrawal without notice, and to any special listing conditions imposed by the property owner(s). As applicable, we make no representation as to the condition of the property (or properties) in question. (G:\UT\SL1\Shared\Apps\Gigas\1 - Projects\Richmond, Mike\1 - Flyers\ThePointe_IV)