

FOR SUBLEASE

619 WESTERN BUILDING

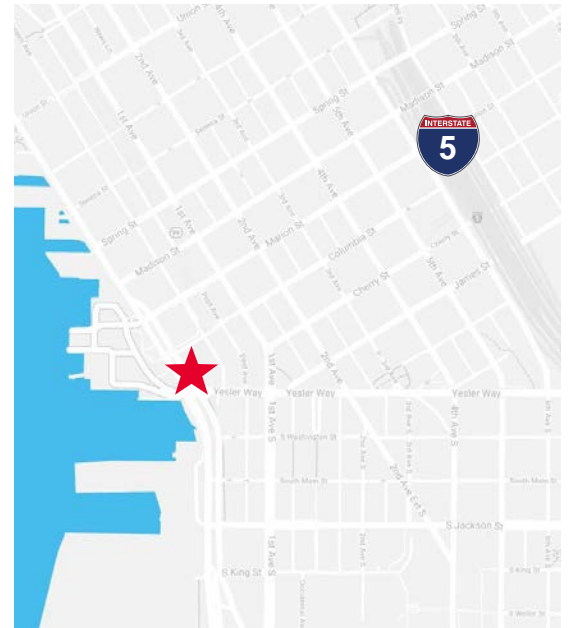
619 Western Ave, Floors 3 & 4
Seattle, WA 98104

25,460 SF AVAILABLE



PROPERTY HIGHLIGHTS

- Sublease space on Floors 3 & 4 with term through 10/31/2027
- Available immediately
- Floors can be combined for 25,460 SF contiguous
- Proximity restaurants, retail, freeways, transit options, and stadiums
- Call for Rates



WILL CARROLL

+1 206 521 0244
will.carroll@cushwake.com

TREVOR YOUNGREN

+1 206 521 0241
trevor.youngren@cushwake.com



**CUSHMAN &
WAKEFIELD**

cushmanwakefield.com

619 WESTERN BUILDING

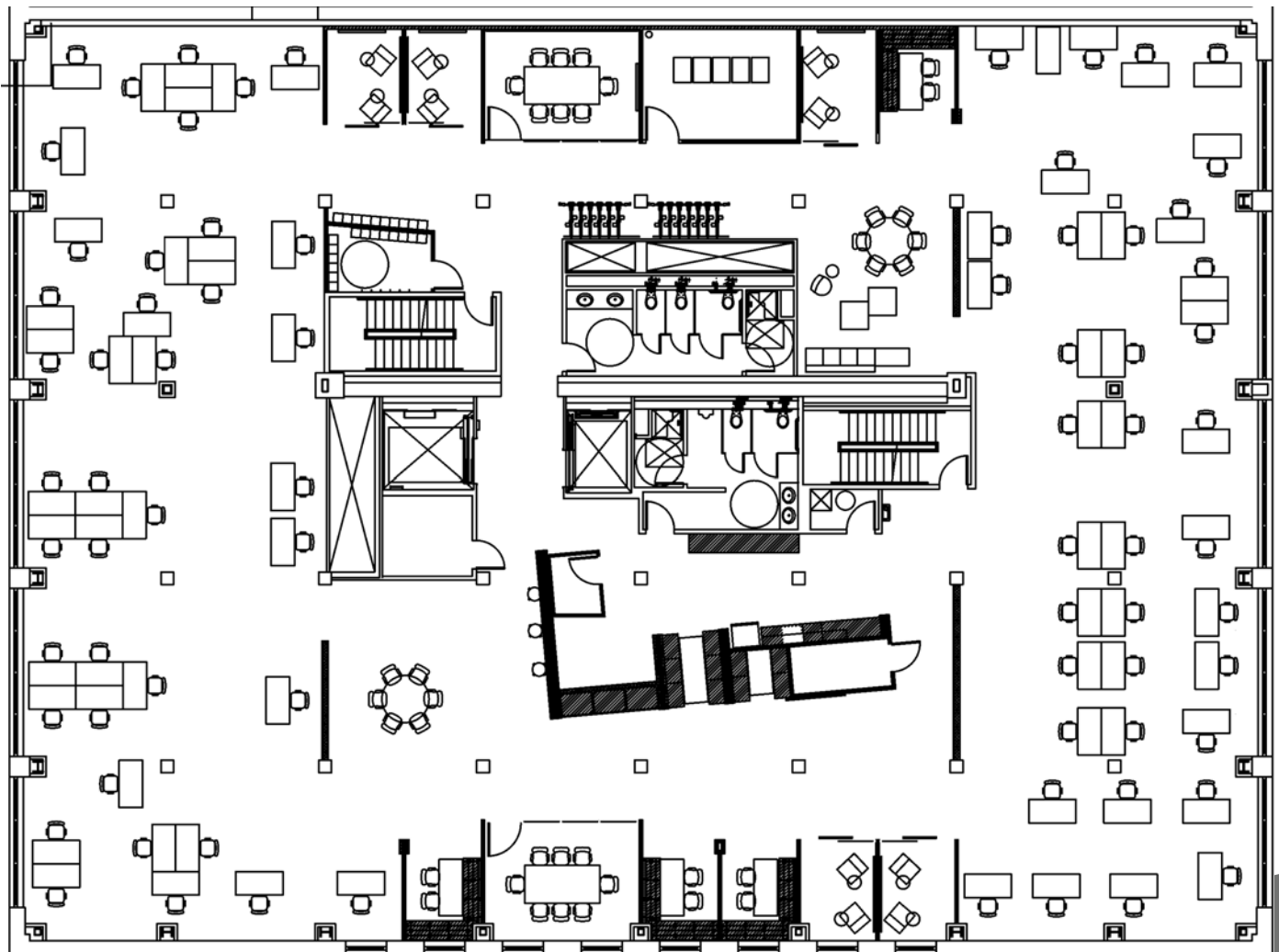
619 Western Ave, Floors 3 & 4
Seattle, WA 98104

25,460 SF AVAILABLE

FOR SUBLEASE

FLOOR 3 — 12,669 SF

- 64 workstations in open/tech buildout
- 2 large (8-person) conference rooms
- 9 private meeting rooms
- Kitchenette
- Mother's room
- In-suite bike storage and bathrooms with showers



**CUSHMAN &
WAKEFIELD**

cushmanwakefield.com

619 WESTERN BUILDING

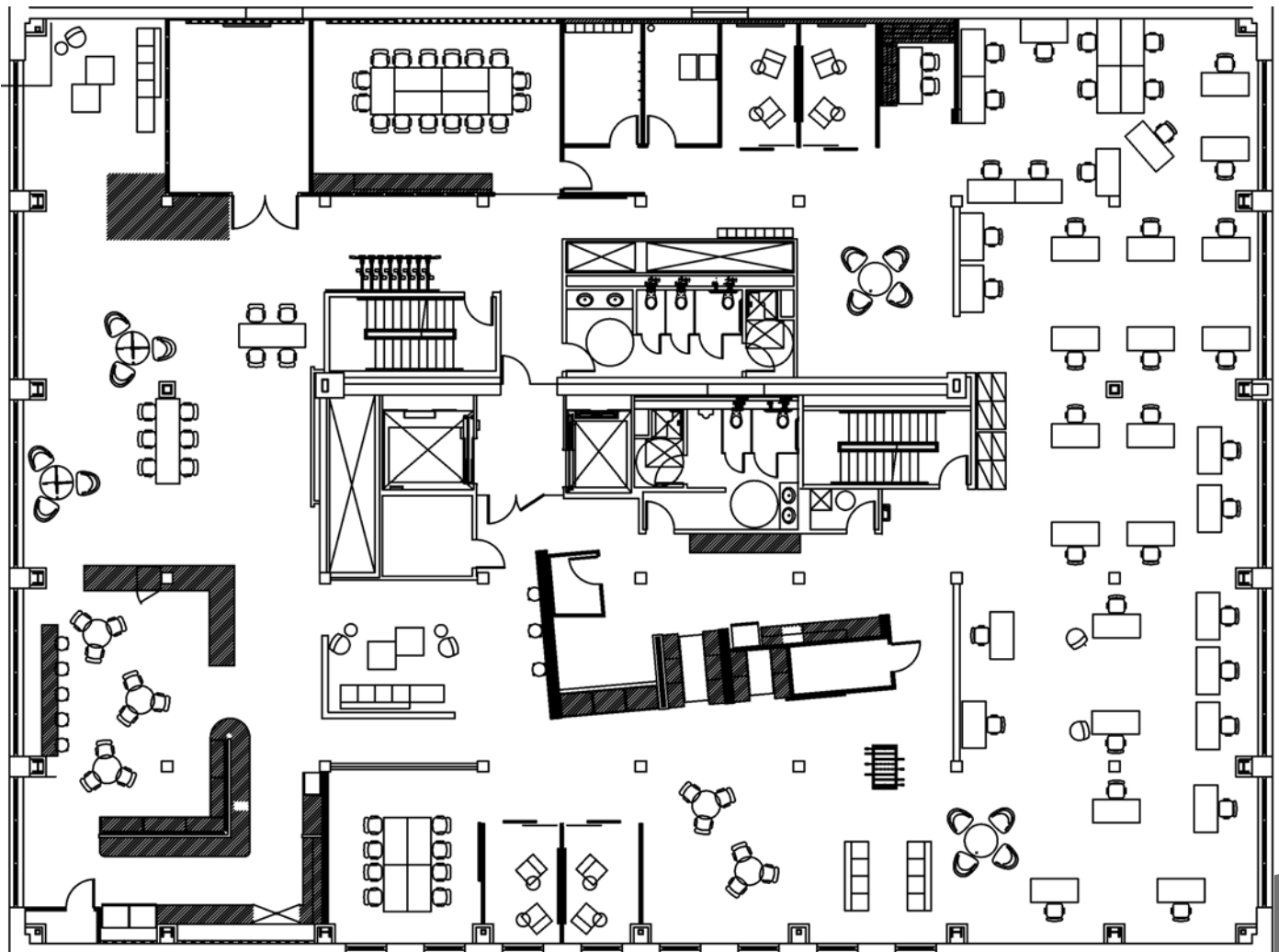
619 Western Ave, Floors 3 & 4
Seattle, WA 98104

25,460 SF AVAILABLE

FOR SUBLEASE

FLOOR 4 — 12,791 SF

- 76 workstations in open/tech buildout
- 3 large conference rooms
- 4 small meeting rooms
- 1 wellness room



**CUSHMAN &
WAKEFIELD**

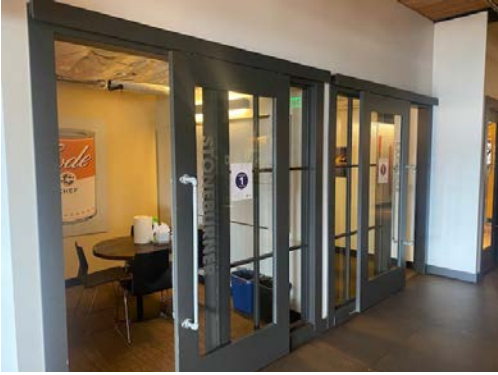
cushmanwakefield.com

619 WESTERN BUILDING

619 Western Ave, Floors 3 & 4
Seattle, WA 98104
25,460 SF AVAILABLE

FOR SUBLEASE

PROPERTY PHOTOS

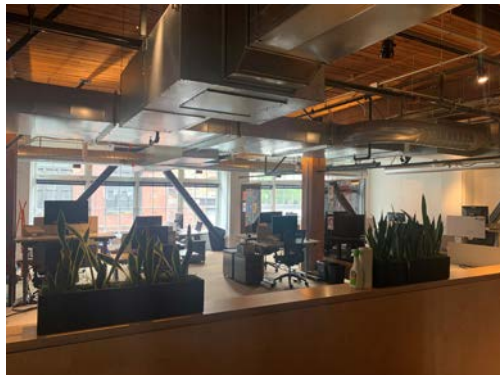
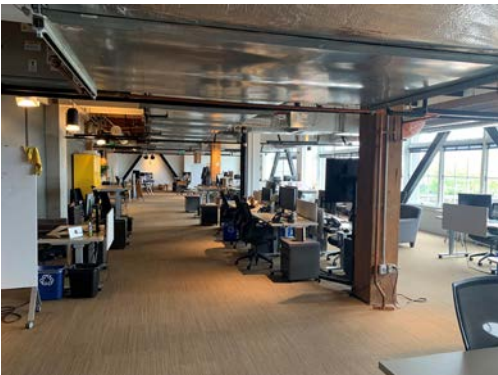


WILL CARROLL

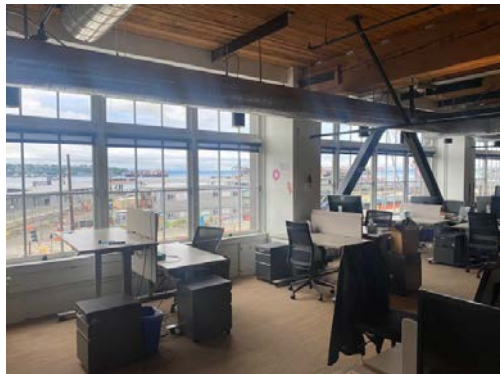
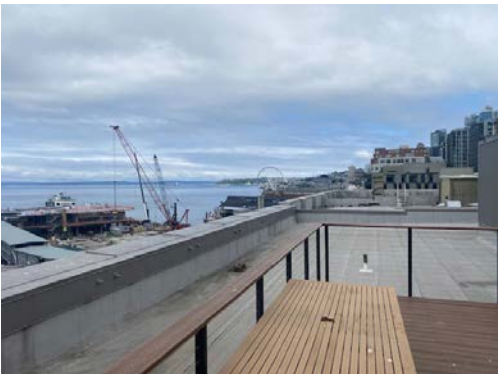
+1 206 521 0244
will.carroll@cushwake.com

TREVOR YOUNGREN

+1 206 521 0241
trevor.youngren@cushwake.com



601 Union Street, Suite 1100
Seattle, Washington 98101
Main +1 206 682 0666
Fax +1 206 521 0298
cushmanwakefield.com



**CUSHMAN &
WAKEFIELD**

cushmanwakefield.com