

FOR SUBLEASE

619 WESTERN BUILDING

619 Western Ave, Floor 3

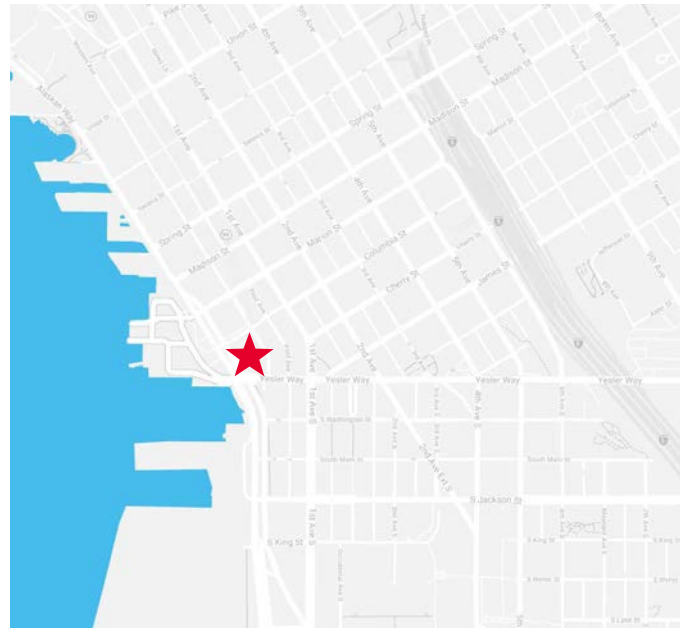
Seattle, WA 98104

12,669 SF AVAILABLE



PROPERTY HIGHLIGHTS

- Third Floor sublease space available immediately with term through 10/31/2027
- 64 workstations in open/tech buildout
- 2 large (8-person) conference rooms, 9 private meeting rooms
- Kitchenette & mother's room
- In-suite bike storage and bathrooms with showers
- **Call for Rates**



WILL CARROLL
+1 206 521 0244
will.carroll@cushwake.com

TREVOR YOUNGREN
+1 206 521 0241
trevor.youngren@cushwake.com



**CUSHMAN &
WAKEFIELD**

cushmanwakefield.com

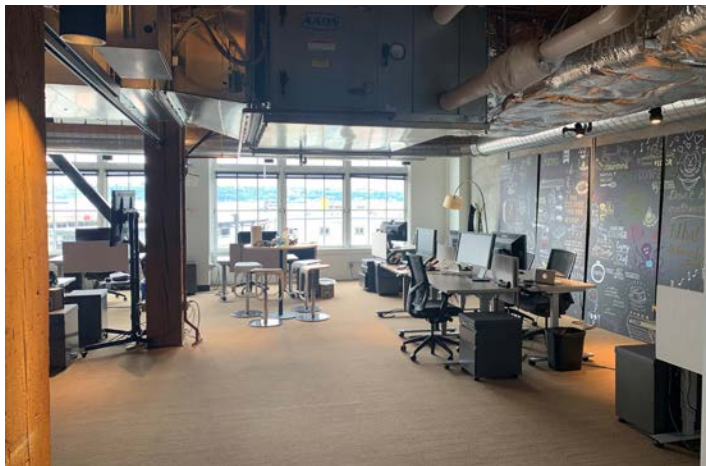
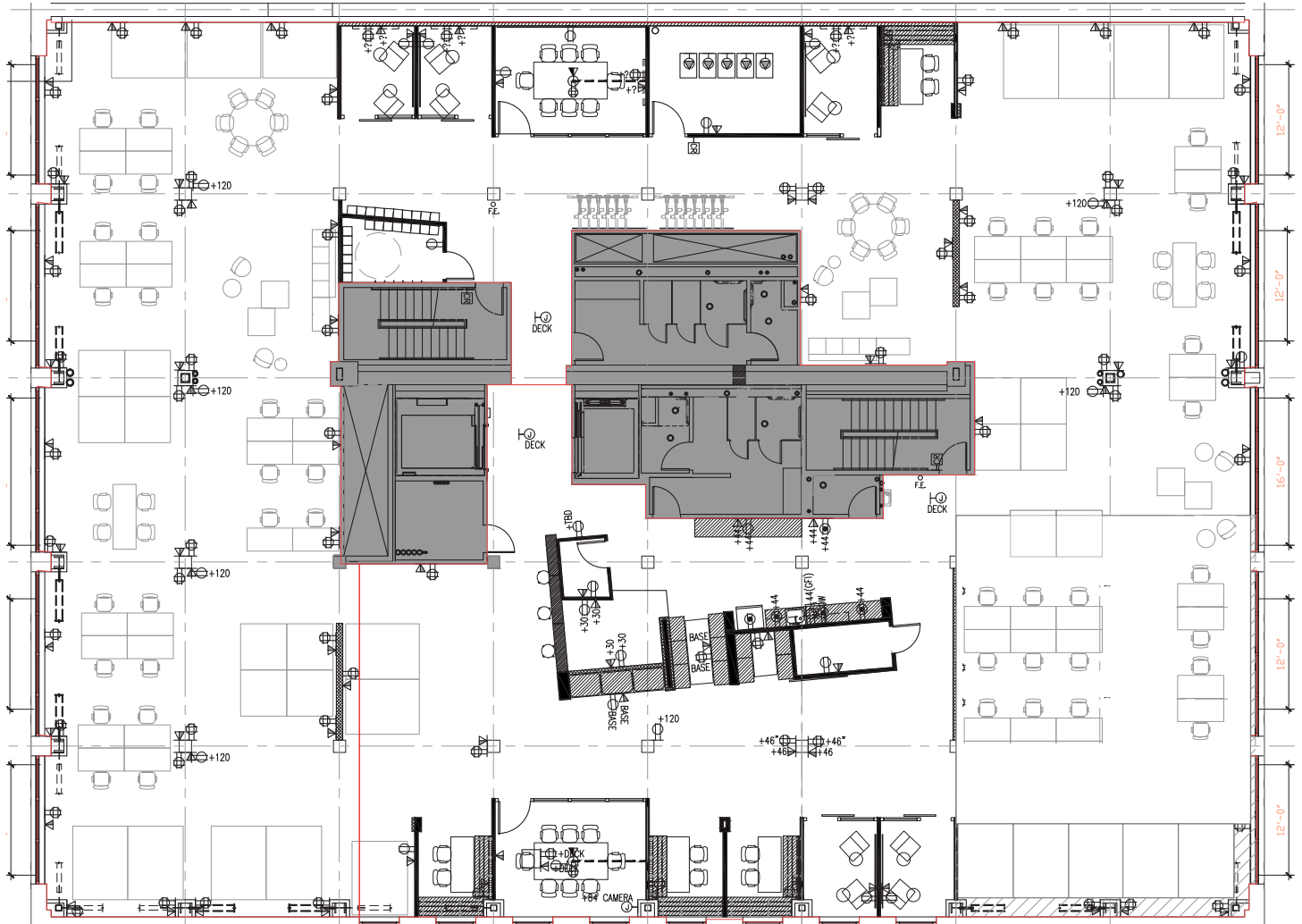
619 WESTERN BUILDING

619 Western Ave, Floor 3
Seattle, WA 98104

12,669 SF AVAILABLE

FOR SUBLEASE

FLOOR PLAN



©2021 Cushman & Wakefield. All rights reserved. The information contained in this communication is strictly confidential. This information has been obtained from sources believed to be reliable but has not been verified. No warranty or representation, express or implied, is made as to the condition of the property (or properties) referenced herein or as to the accuracy or completeness of the information contained herein, and same is submitted subject to errors, omissions, change of price, rental or other conditions, withdrawal without notice, and to any special listing conditions imposed by the property owner(s). Any projections, opinions or estimates are subject to uncertainty and do not signify current or future property performance.

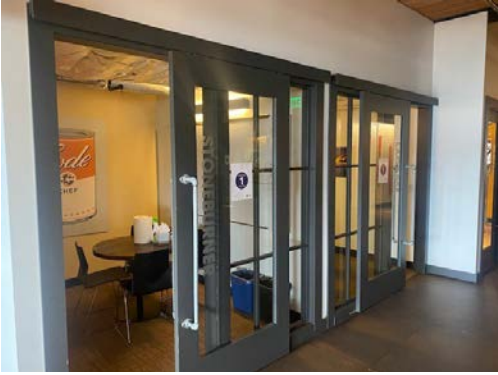
619 WESTERN BUILDING

619 Western Ave, Floor 3
Seattle, WA 98104

12,669 SF AVAILABLE

FOR SUBLEASE

PROPERTY PHOTOS



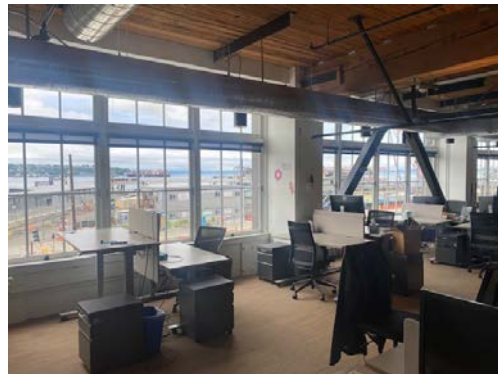
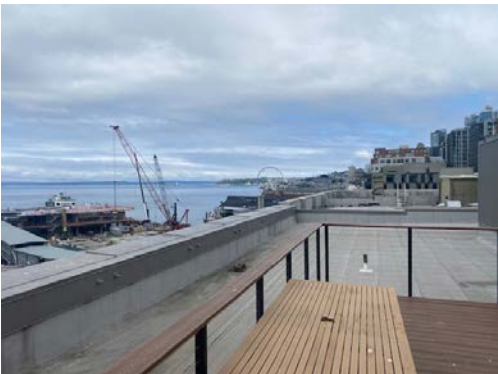
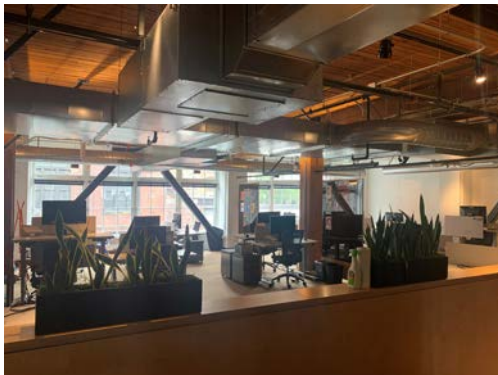
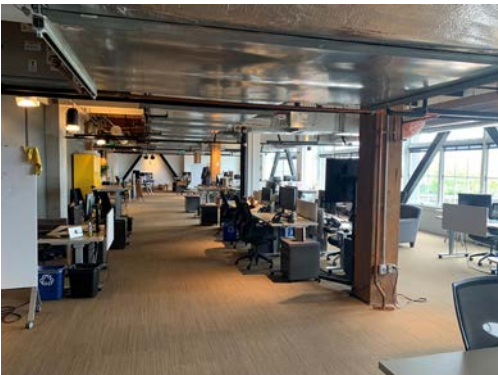
WILL CARROLL

+1 206 521 0244
will.carroll@cushwake.com

TREVOR YOUNGREN

+1 206 521 0241
trevor.youngren@cushwake.com

601 Union Street, Suite 1100
Seattle, Washington 98101
Main +1 206 682 0666
Fax +1 206 521 0298
cushmanwakefield.com



**CUSHMAN &
WAKEFIELD**

cushmanwakefield.com