



THEWELL™

OFFICE FOR SUBLEASE



W E L C O M E T O THE WELL

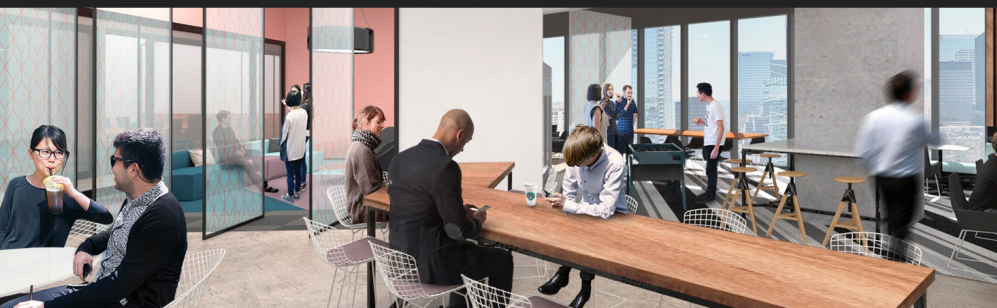
The Well is a new ambitious mixed-used endeavour, a bold reflection of Toronto's energy and diversity, and an extension of the urban vibrancy of King West. Bordering Front, Spadina and Wellington, it is a mixture of retail, commercial and residential space in downtown Toronto.

DETAILS

Availability	7,465 RSF (20th Floor)
Occupancy	Q2 2022
Net Asking Rate	Please Call Listing Agent to Discuss
Additional Rent	\$26.17 PSF (2021 Estimates)
Term	Flexible

HIGHLIGHTS

- Easy access to Spadina Streetcar & Union Station
- Floor-to-ceiling windows allowing ample natural light
- Furniture can potentially be made available
- Car and bike parking available
- Opportunity to access the sublandlord's fabrication studio for digital and physical fabrication



A M E N I T Y M A P

FOOD & BEVERAGE

- | | | |
|------------------|--------------------------|------------------------|
| 1. Hero Burger | 14. Ascari | 27. Weslodge Saloon |
| 2. McDonald's | 15. Dasha | 28. SOMA Chocolate |
| 3. Wild Wing | 16. Locals Only | 29. Patria |
| 4. Regulars | 17. Buca | 30. Quantum Coffee |
| 5. Bank Note | 18. Gusto 101 | 31. Aroma Espresso Bar |
| 6. Oretta | 19. Jimmys Coffee | 32. Bar Hop |
| 7. Lavelle | 20. The Keg | 33. Starbucks |
| 8. Brioche Doree | 21. Wilbur Mexicana | 34. Cali Love |
| 9. Lapinou | 22. Pizzeria Libretto | 35. Bisha Hotel |
| 10. Parlour | 23. Jacob's Steakhouse | 36. Moretti |
| 11. iQ | 24. Cibo Wine Bar | 37. Wahlburgers |
| 12. Wvrst | 25. Baro | |
| 13. Lov | 26. Rodneys Oyster House | |

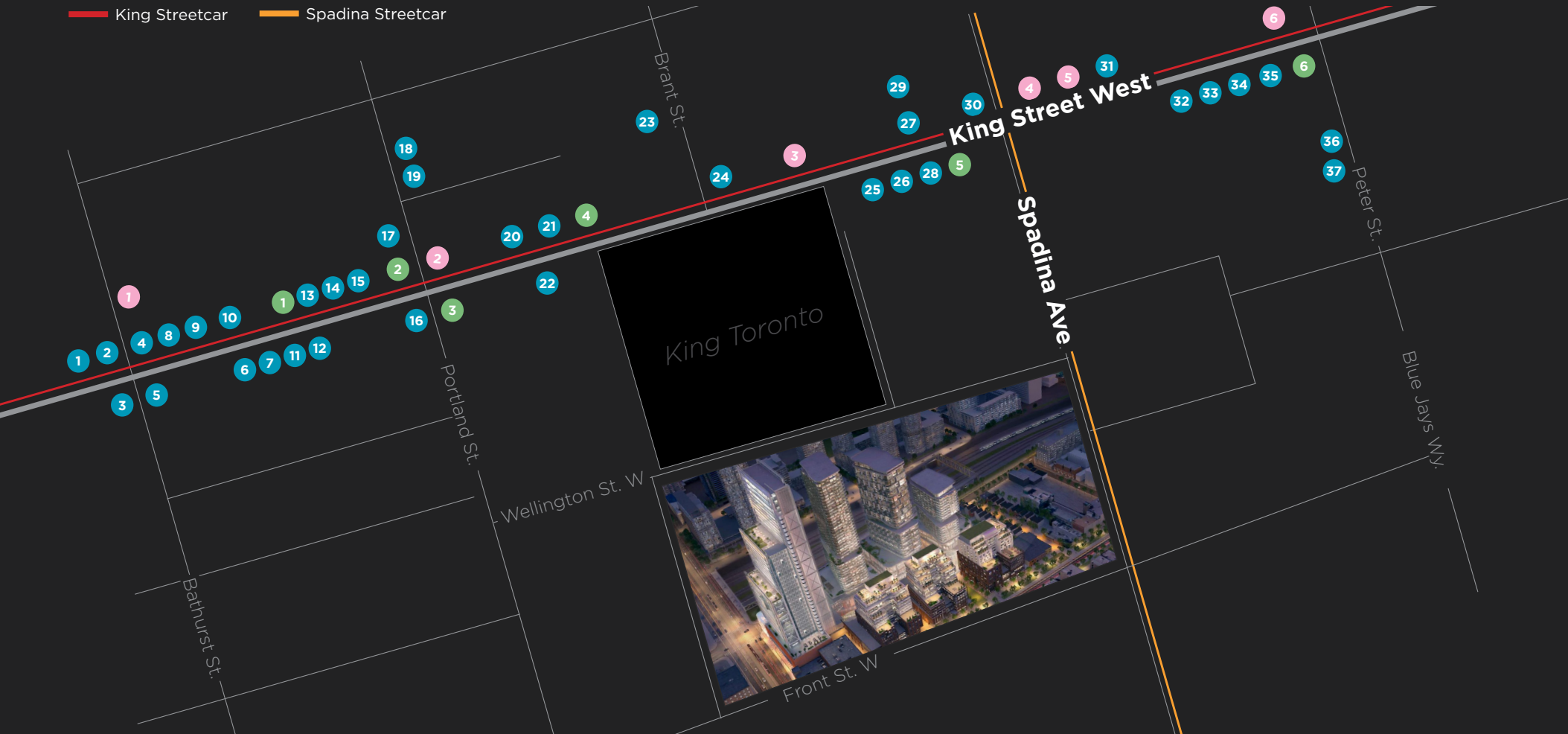
RETAIL

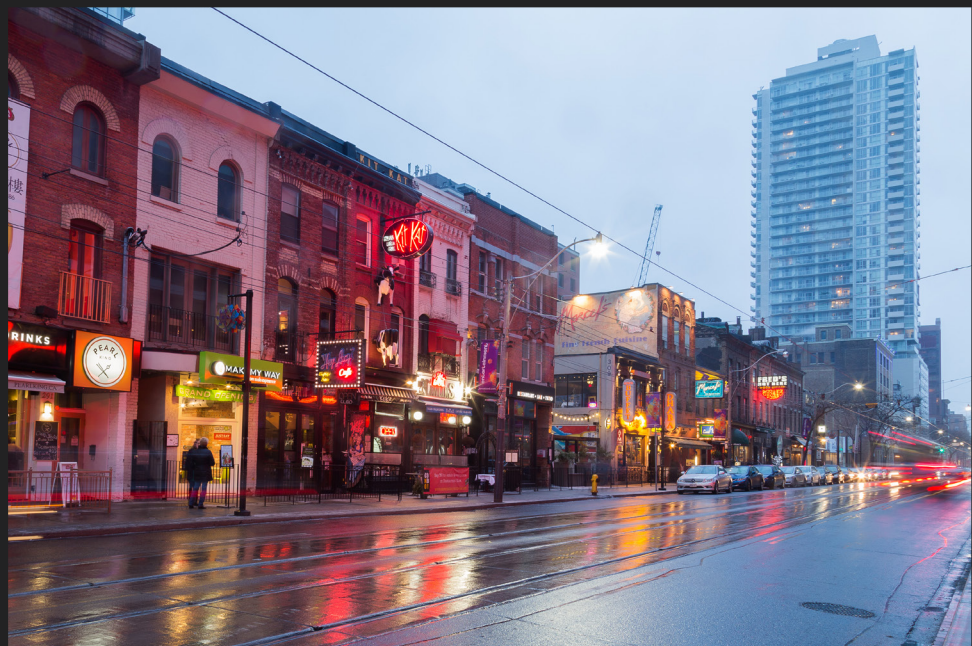
1. Black Toe Running
2. Dollarama
3. Shoppers Drug Mart
4. Fresh & Wild
5. Noah's Natural Food
6. Shoppers Drug Mart

HEALTH & BEAUTY/FITNESS

1. Blo Blow Dry Bar
2. Hammam Spa
3. Steinberg John & Associates Studio
4. Her Majesty's Pleasure
5. Totum
6. Fit Factory

King Streetcar Spadina Streetcar



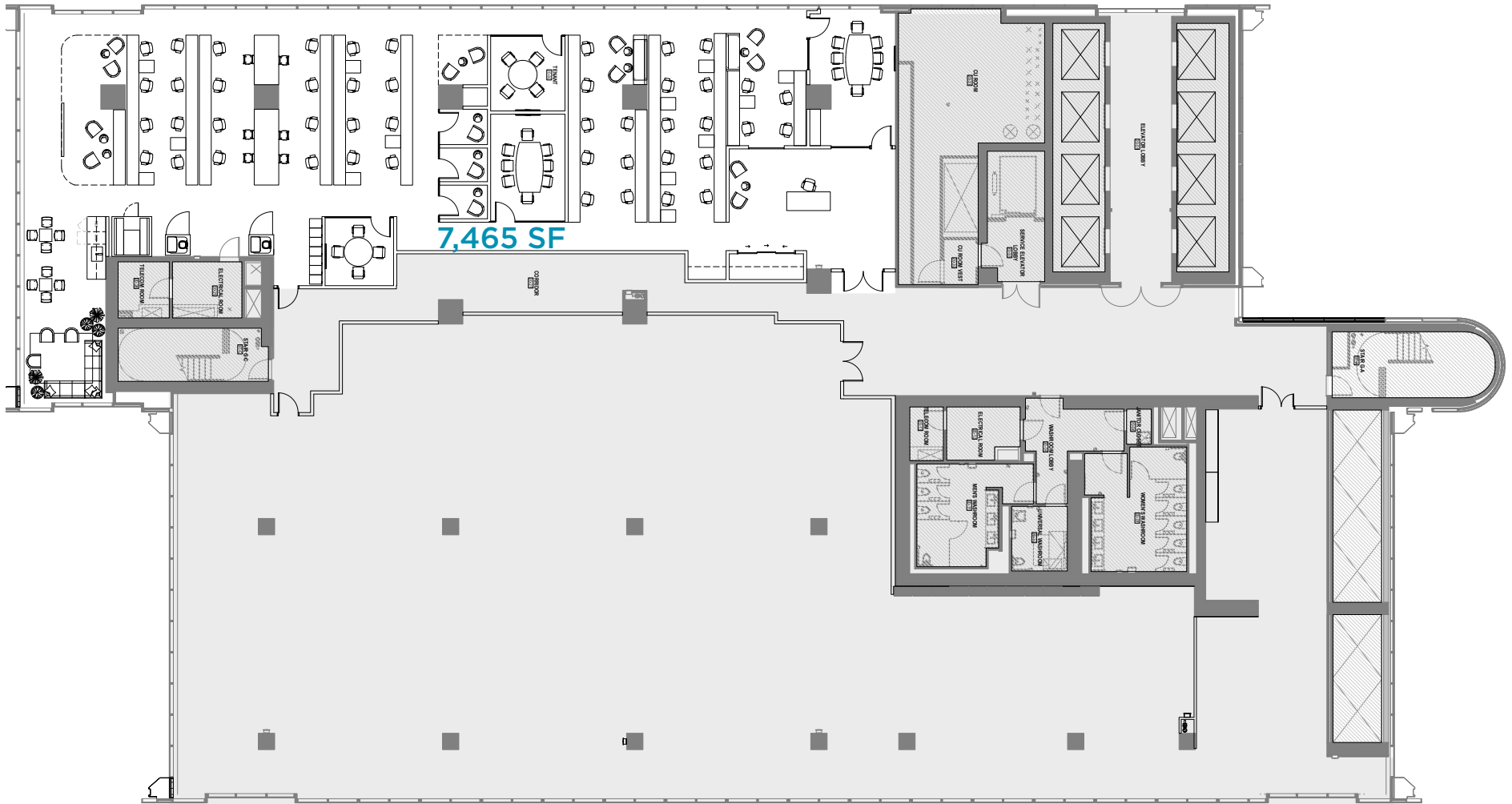


SAMPLE BUILD OUT



FLOOR PLANS

POTENTIAL TURNKEY LAYOUT LEVEL 20





161 Bay Street, Suite 1500
Toronto, ON
M5J 2S1

C O N T A C T

MICHAEL SCACE*
Executive Vice President
416.359.2456
michael.scace@cushwake.com

ALAN RAWN*
Senior Vice President
416.359.2440
alan.rawn@cushwake.com

LAUREN LUCHINI*
Associate Vice President
416.359.2553
lauren.luchini@cushwake.com

BRENDAN SHEA*
Associate
905.501.6426
brendan.shea@cushwake.com

©2022 Cushman & Wakefield ULC. All rights reserved. The information contained in this communication is strictly confidential. This information has been obtained from sources believed to be reliable but has not been verified. NO WARRANTY OR REPRESENTATION, EXPRESS OR IMPLIED, IS MADE AS TO THE CONDITION OF THE PROPERTY (OR PROPERTIES) REFERENCED HEREIN OR AS TO THE ACCURACY OR COMPLETENESS OF THE INFORMATION CONTAINED HEREIN, AND SAME IS SUBMITTED SUBJECT TO ERRORS, OMISSIONS, CHANGE OF PRICE, RENTAL OR OTHER CONDITIONS, WITHDRAWAL WITHOUT NOTICE, AND TO ANY SPECIAL LISTING CONDITIONS IMPOSED BY THE PROPERTY OWNER(S). ANY PROJECTIONS, OPINIONS OR ESTIMATES ARE SUBJECT TO UNCERTAINTY AND DO NOT SIGNIFY CURRENT OR FUTURE PROPERTY PERFORMANCE.

*Sales Representative