

FULL FLOOR OPPORTUNITY
Suite 1100 - 14,650 SF
Up to 25,184 Contiguous

3100 Steeles Avenue East, Markham



DETAILS

Unit 1100	14,650 SF
Unit 1000	8,681 SF
Unit 1002	1,853 SF
Contiguous	25,184 SF

Base Rent: \$18.50

Additional Rent: \$17.64 (2023 Est.)

Available: Q3 2024

HIGHLIGHTS

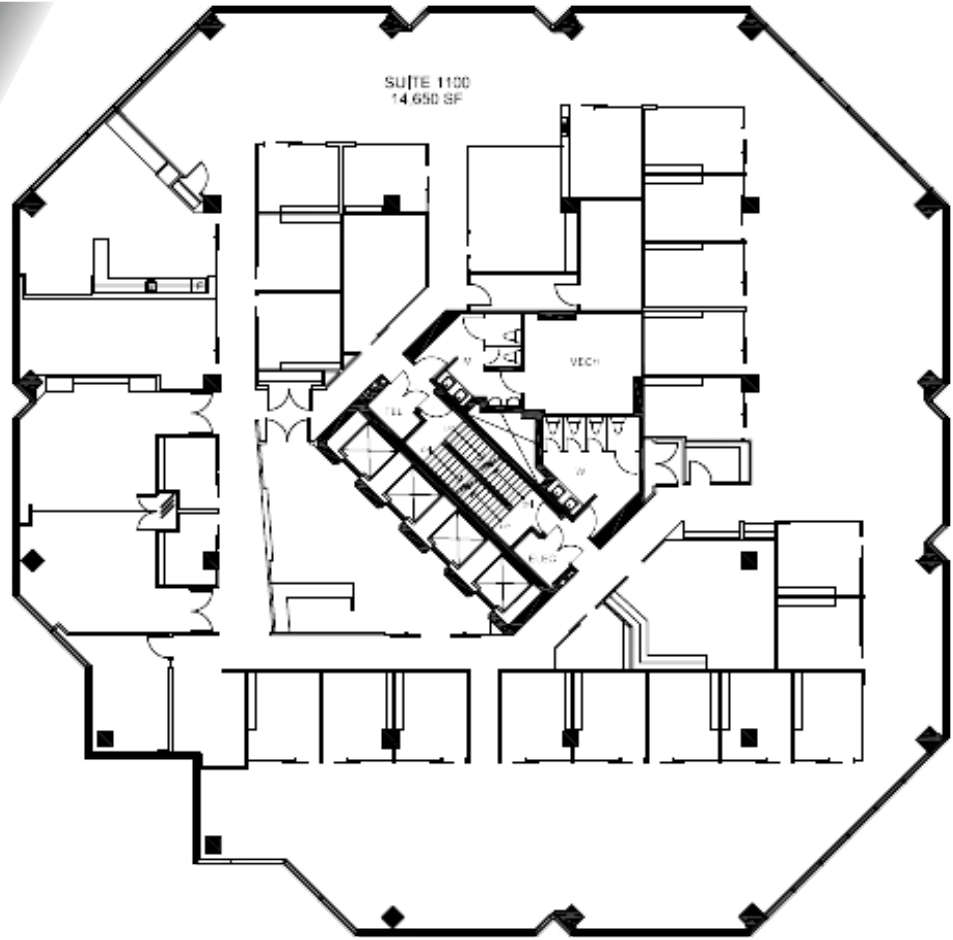
- Full (top) floor opportunity with welcoming and secured reception area, excellent views and exceptional access to natural light.
- Existing improvements provide great opportunity to save on build-out costs.
- Elevator to underground parking and 3.5:1000 free surface parking available.
- Rooftop and podium signage available.
- Existing improvements offer good mix of internal glass offices and open-concept working areas on the perimeter. Beautiful large boardroom in addition to other medium sized meeting and breakout rooms. Bright kitchen with excellent views of the city.

[Click Here For Virtual Tour](#)

FLOORPLAN

UNIT 1100 - 14,650 SF

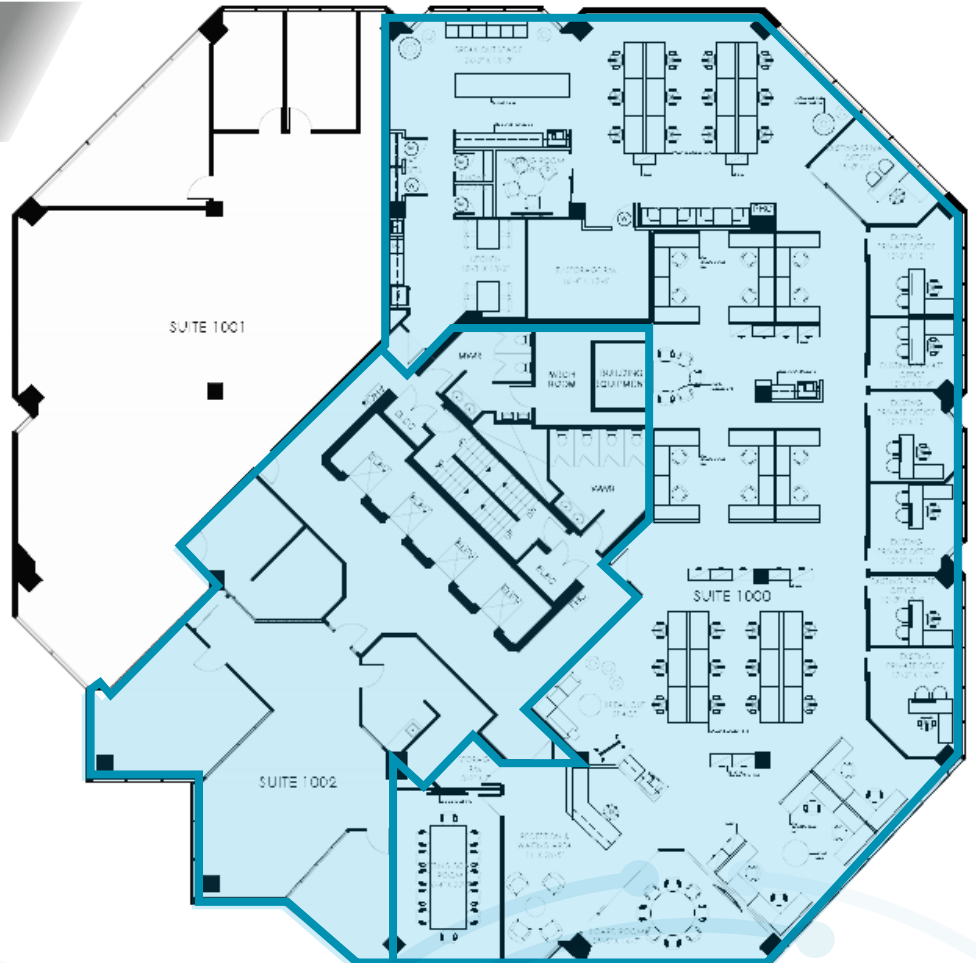
FULL FLOOR - AS BUILT



FLOORPLAN

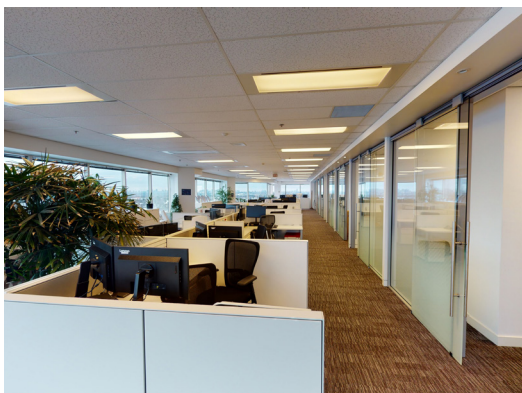
UNIT 1000 & 1002 - 10,534 SF

CONCEPT PLAN

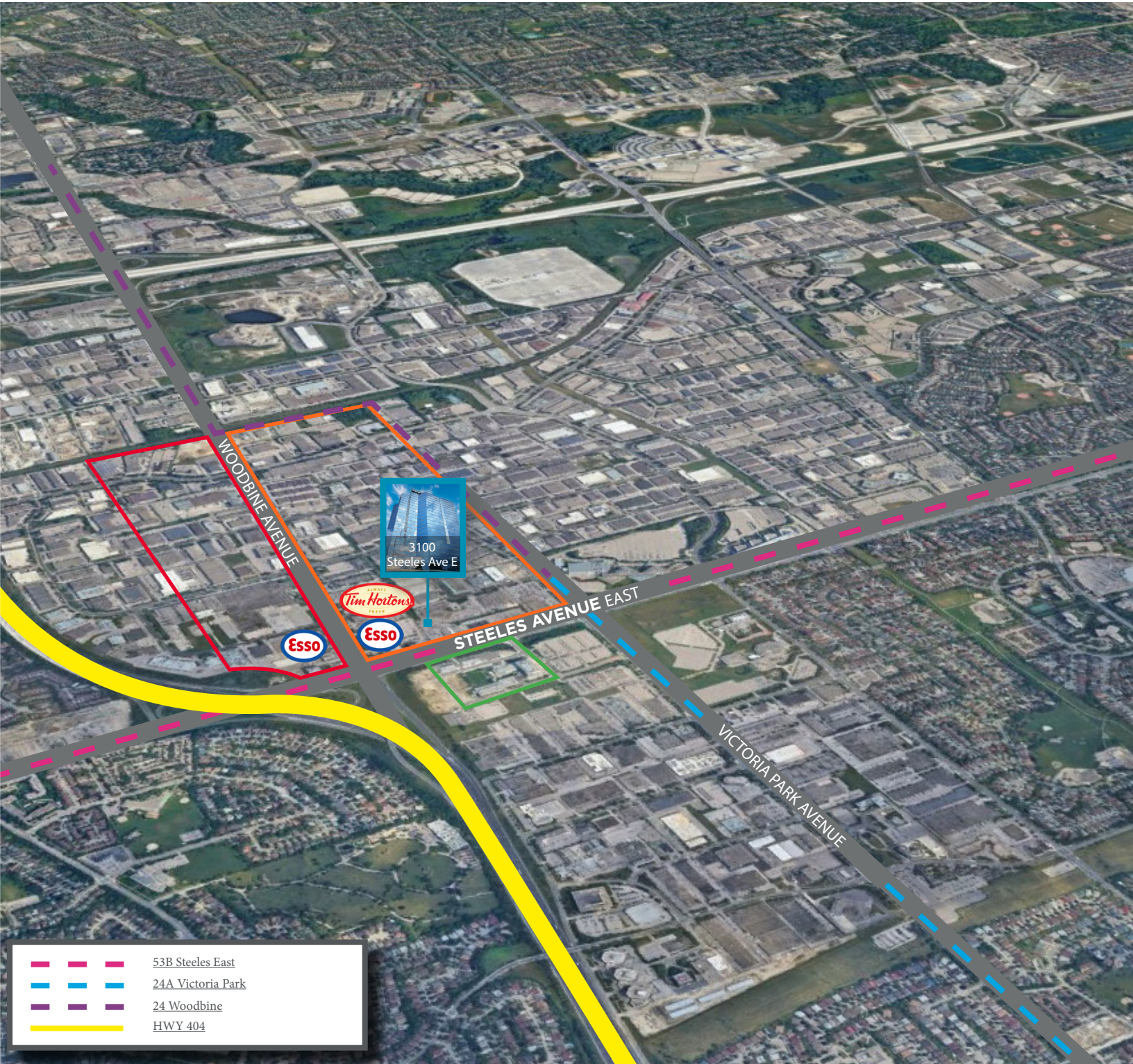


Up to 25,184 Contiguous (including unit 1002 and 1000)




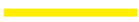
INTERIOR PHOTOS - 11TH FLOOR



AMENITIES MAP



3100 Steeles Ave E

-  53B Steeles East
-  24A Victoria Park
-  24 Woodbine
-  HWY 404



CONTACT

PETER MCGOEY*
Associate Vice President
416-756-5436
Peter.McGoey@cushwake.com

DAVID STEVENS*
Senior Associate
416-756-5420
David.Stevens@cushwake.com



CUSHMAN & WAKEFIELD ULC
3100 Steeles Avenue East
Markham, Ontario L3R 8T3 | Canada
www.cushmanwakefield.com

©2023 Cushman & Wakefield ULC, Brokerage. All rights reserved. The information contained in this communication is strictly confidential. This information has been obtained from sources believed to be reliable but has not been verified. NO WARRANTY OR REPRESENTATION, EXPRESS OR IMPLIED, IS MADE AS TO THE CONDITION OF THE PROPERTY (OR PROPERTIES) REFERENCED HEREIN OR AS TO THE ACCURACY OR COMPLETENESS OF THE INFORMATION CONTAINED HEREIN, AND SAME IS SUBMITTED SUBJECT TO ERRORS, OMISSIONS, CHANGE OF PRICE, RENTAL OR OTHER CONDITIONS, WITHDRAWAL WITHOUT NOTICE, AND TO ANY SPECIAL LISTING CONDITIONS IMPOSED BY THE PROPERTY OWNER(S). ANY PROJECTIONS, OPINIONS OR ESTIMATES ARE SUBJECT TO UNCERTAINTY AND DO NOT SIGNIFY CURRENT OR FUTURE PROPERTY PERFORMANCE. *Sales Representative **Broker