



CUSHMAN &
WAKEFIELD



**UNDER NEW
OWNERSHIP**

PETWIN MIDPARK CENTRE

340 Midpark Way SE
Calgary, AB

BUILDING HIGHLIGHTS



101,961 SF
Building Size

Office Space

Suite 200	10,598 SF	
Suite 207	1,515 SF	
Suite 215	3,903 SF	
Suite 330	3,785 SF	→ Show Suite Coming Soon
Suite 360	2,410 SF	→ Show Suite Coming Soon
Suite 370	2,419 SF	
Suite 390	4,650 SF	→ LEASED

Market Rates
Lease Rates

\$15.76 PSF (Est. 2025)
Operating Costs

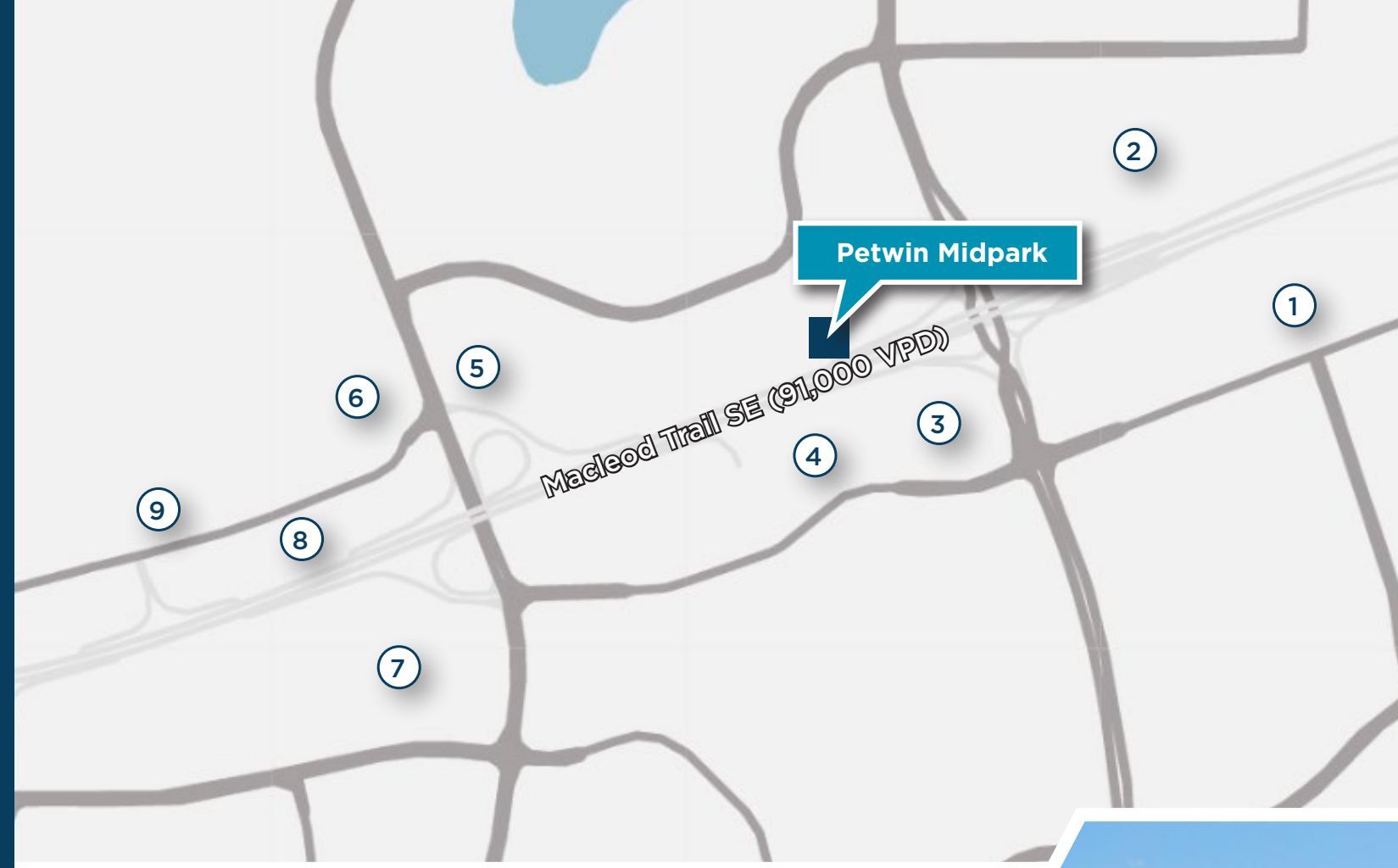
Immediately
Availability

1:334 SF
Parking Ratio

30 Additional Stalls
Visitor Parking

PROPERTY HIGHLIGHTS

- Under new ownership, Petwin Properties
- Excellent parking ratio and visitor parking
- 24/7 accessible gym with locker room, Wi-fi, and recently renovated and private showers
- Secure bike room on the main floor
- Illuminated podium signage available
- Barrier free washrooms, fully modernized elevators, and updated main entry lobby area
- 2021 NRCan's Energy Star Score rating is 93
- Recent LED retrofits for lower energy costs
- BOMA BEST Gold certified property



AMENITIES MAP

1. Walmart, The Home Depot, Boston Pizza, Best Buy, Sport Chek, Staples, Michaels, Mark's, Dairy Queen
2. Original Joe's, Starbucks, Fat Burger, The CattleBaron Steakhouse & Bar, Freshii
3. Shoppers Drug Mart, Blowers & Grafton, Esso, BMO, Winners, A & W, CIBC, Burger King
4. Real Canadian Superstore, Indigo, Landmark Cinemas, Moxie's Grill & Bar, Rusty's Roadhouse Bar & Grill, TD Bank, Hudsons Canada's Pub
5. McDonalds, Dollarama, Wendy's, Eggsmart, TreeHouse Indoor Playground
6. Mobil 1, Subway, DOMO, Scotiabank, TacoTime, Freedom Mobile
7. Sobeys, TD Bank, Starbucks, Kinjo, Little Creek Veterinary Clinic
8. Tim Hortons, KFC, Centex, Integra Tire
9. Benjamin Moore, CARSTAR, Auto Value



FLOOR PLANS



FLOOR PLANS

2nd Floor

Suite 200: 10,598 SF

- Windows/natural light surrounding 3 sides of the space



3rd Floor

~~Suite 310: 2,822 SF LEASED~~

~~Suite 320: 2,550 SF LEASED~~

Suite 330: 3,785 SF

- Show Suite Coming Soon

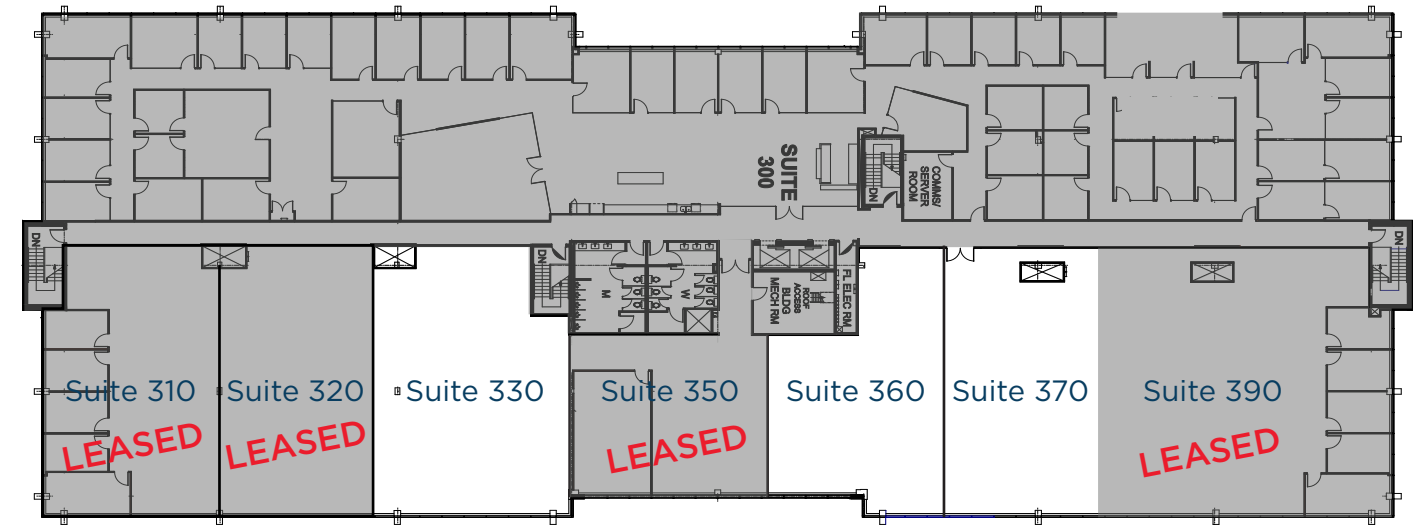
~~Suite 350: 1,063 SF LEASED~~

Suite 360: 2,410 SF

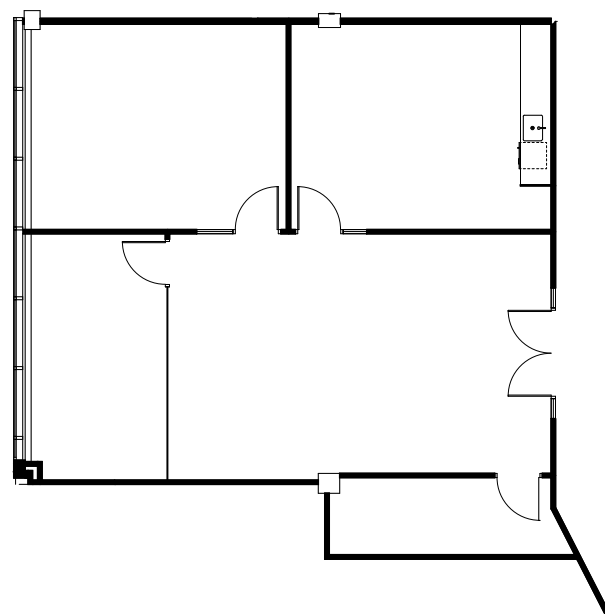
- Show Suite Coming Soon

Suite 370: 2,419 SF

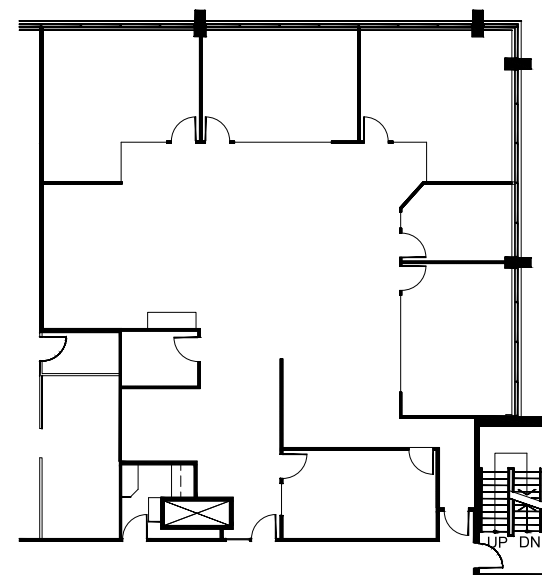
~~Suite 390: 4,650 sf LEASED~~



Suite 207: 1,515 SF



Suite 215: 3,903 SF





CONTACT

CUSHMAN & WAKEFIELD ULC

250 6th Avenue SW, Suite 2400 | Calgary, Alberta T2P 3H7
Office +1 403 261 1111 | cushmanwakefield.com

David Lees

Executive Vice President
Office Leasing & Sales
D. +1 403 261 1102
M. +1 403 869 5025
david.lees@cushwake.com

Adam Ramsay

Executive Vice President
Office Leasing & Sales
D. +1 403 261 1103
M. +1 403 660 6390
adam.ramsay@cushwake.com

Trent Peterson

Vice President
Office Leasing & Sales
D. +1 403 261 1101
M. +1 403 771 5969
trent.peterson@cushwake.com

©2025 Cushman & Wakefield. All rights reserved. The information contained in this communication is strictly confidential. This information has been obtained from sources believed to be reliable but has not been verified. NO WARRANTY OR REPRESENTATION, EXPRESS OR IMPLIED, IS MADE AS TO THE CONDITION OF THE PROPERTY (OR PROPERTIES) REFERENCED HEREIN OR AS TO THE ACCURACY OR COMPLETENESS OF THE INFORMATION CONTAINED HEREIN, AND SAME IS SUBMITTED SUBJECT TO ERRORS, OMISSIONS, CHANGE OF PRICE, RENTAL OR OTHER CONDITIONS, WITHDRAWAL WITHOUT NOTICE, AND TO ANY SPECIAL LISTING CONDITIONS IMPOSED BY THE PROPERTY OWNER(S). ANY PROJECTIONS, OPINIONS OR ESTIMATES ARE SUBJECT TO UNCERTAINTY AND DO NOT SIGNIFY CURRENT OR FUTURE PROPERTY PERFORMANCE.

