

FOR LEASE

5920 MACLEOD TRAIL SW
CALGARY, ALBERTA



MACLEOD

PLACE I



Property Highlights

BUILDING DETAILS:

Availability:	Immediately
Net Rent:	Market rates
Operating Costs:	\$16.88 psf (est. 2024)
Parking:	\$140 per stall
Building Size:	80,458 sf
Term:	Flexible

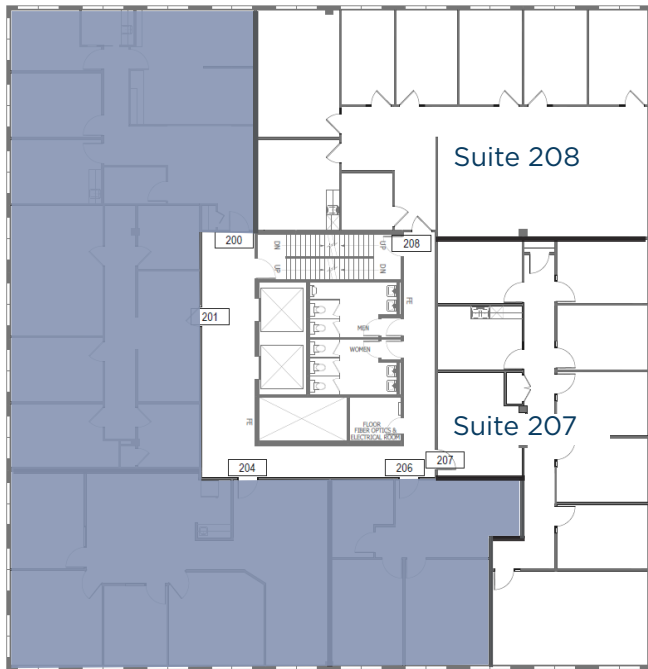
AVAILABILITIES:

- Suite 207: 2,257 sf
- Suite 208: 2,544 sf
- Suite 300A: 2,831 sf
- ~~Suite 310: 1,689 sf~~ **LEASED**
- Suite 440: 1,293 sf
- Suite 450: 2,582 sf
- Suite 700: 4,580 sf
- Suite 701: 2,546 sf

SUITES 207 & 208

2nd Floor

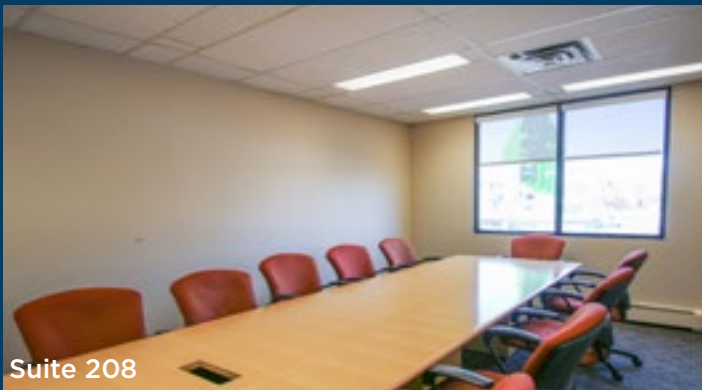
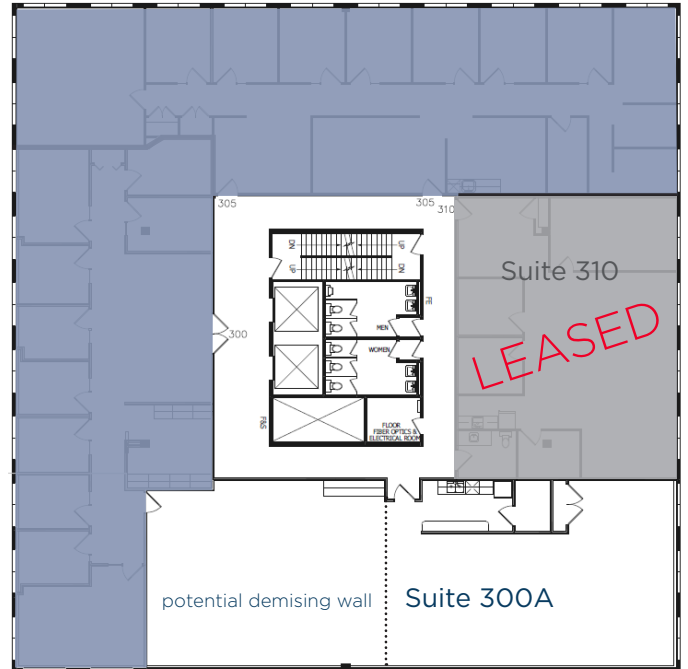
Suites - 207: 2,257 sf & 208: 2,544 sf



SUITES 300A & 310

3rd Floor

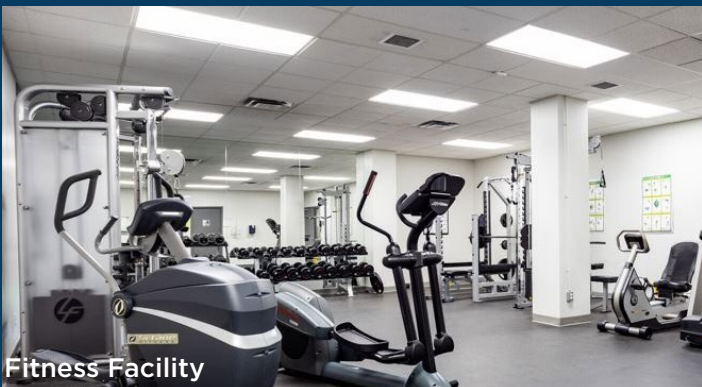
Suites - 300A: 2,831 sf & ~~310: 1,689 sf~~ LEASED



Suite 208



Suite 300A



Fitness Facility

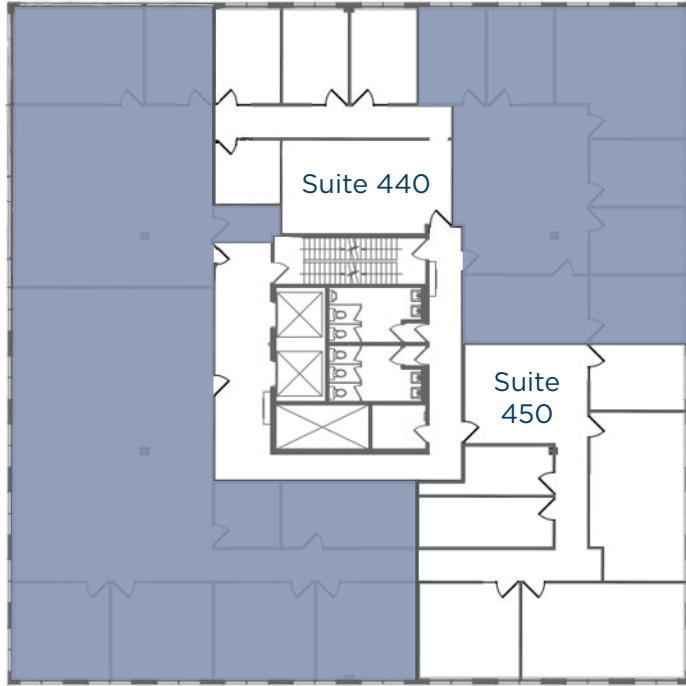


Lobby

SUITES 440 & 450

4th Floor

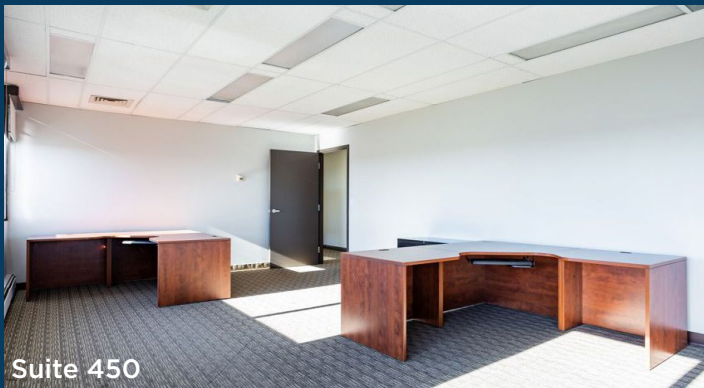
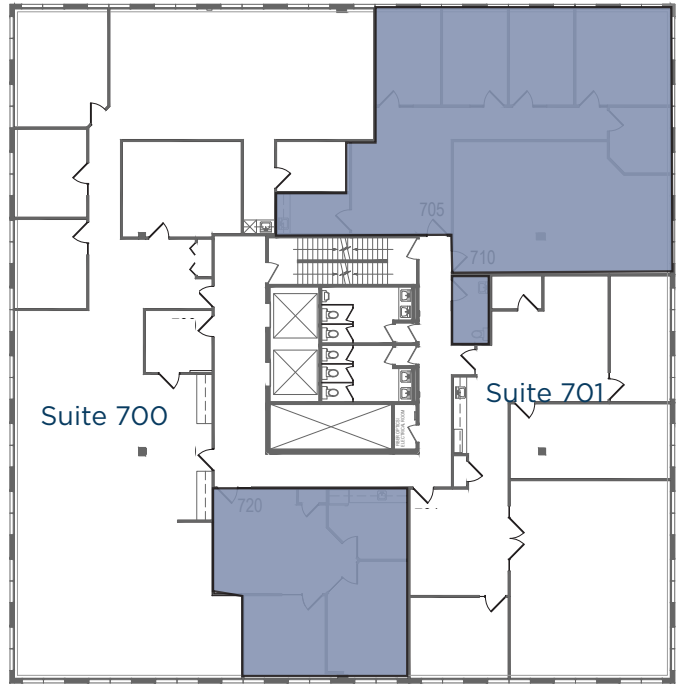
Suites - 440: 1,293 sf & 450: 2,582 sf



SUITES 700 & 701

7th Floor

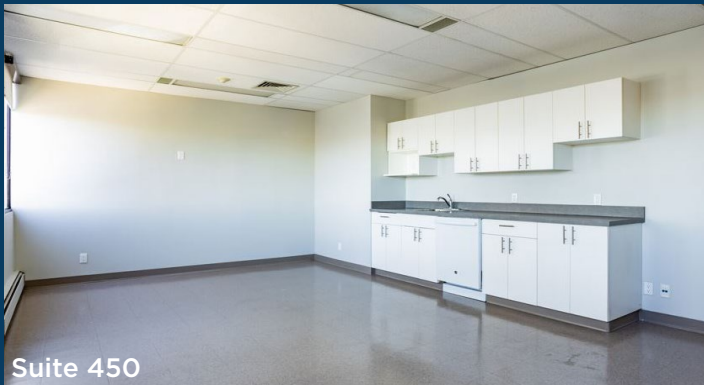
Suites - 700: 4,580 sf & 701: 2,546 sf



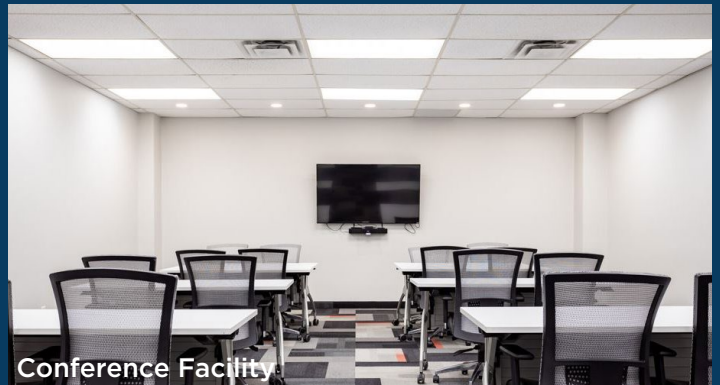
Suite 450



Suite 700



Suite 450



Conference Facility



Area Amenities

RESTAURANTS

1. Ogam Chicken
2. Tim Hortons
3. Double Zero
4. WOW Bakery
5. Red Lobster
6. Globefish
7. JOEY Chinook
8. Prairie Dog Brewing
9. Starbucks
10. Carl's Jr

*Aloha Kitchen opening soon in the complex

RETAIL OPTIONS

1. Nordstrom
2. Spirit Leaf
3. Apple
4. Sports Chek
5. Hudson's Bay
6. Silverhill Acura
7. Staples
8. The Home Depot
9. Zara
10. Shoppers Drug Mart

HOTELS

1. Canadas Best Value Inn

MULTI-FAMILY

1. Windsor Place
2. First Assembly Manor
3. Chinook Gardens

CONTACT INFORMATION

CUSHMAN & WAKEFIELD ULC

250 - 6 Avenue SW, Suite 2400 | Calgary, AB T2P 3H7
403 261 1111 | cushmanwakefield.com

DAVID LEES

Executive Vice President
Office Sales & Leasing
D: 403 261 1102
M: 403 869 5025
david.lees@cushwake.com

ADAM RAMSAY

Executive Vice President
Office Sales & Leasing
D: 403 261 1103
M: 403 660 6390
adam.ramsay@cushwake.com

TRENT PETERSON

Vice President
Office Sales & Leasing
D: 403 261 1101
M: 403 771 5969
trent.peterson@cushwake.com

