

# YORK PLACE OFFICE

7701 YORK AVENUE SOUTH  
EDINA, MN



HOME



PROPERTY INFORMATION



PROPERTY AVAILABILITIES



PROPERTY AERIAL



PROPERTY MAP



PROPERTY IMAGES



CONTACT



**CUSHMAN &  
WAKEFIELD**

3500 American Blvd W | Suite 200  
Minneapolis, MN 55431  
cushmanwakefield.com

**RYAN HAMPSON**  
Senior Associate  
+1 952 465 3309  
ryan.hampson@cushwake.com

**AARON BARNARD, SIOR, CCIM**  
Senior Director  
+1 952 465 3372  
aaron.barnard@cushwake.com

**GORDIE HAMPSON**  
Senior Director  
+1 952 465 3310  
gordie.hampson@cushwake.com



# PROPERTY INFORMATION

7701 YORK AVENUE SOUTH, EDINA, MN

## PROPERTY HIGHLIGHTS

- Recently Renovated Class B three-story 57,000 square foot building
- Built in 1980; Renovated 2022-2023
- On-site Amenities include: Board Room, Small Conference Room, Shared Break Area with Micro Market, TV Lounge
- Outdoor Patio coming Summer 2023!
- Functional, efficient floorplate
- Custom tailored space to meet your specific needs
- Excellent access and visibility just off I-494 and York Avenue
- Near numerous area restaurants, hotels and retail amenities

## BUILDING INFORMATION

<b>BUILDING SIZE</b>	• 57,118 SF
<b>AVAILABILITIES</b>	<ul style="list-style-type: none"> <li>• Suite 100 ..... 1,973 SF</li> <li>• Suite 130 ..... 2,031 SF</li> <li>• Suite 250 ..... 10,000 SF</li> <li>• Suite 360 ..... 1,405 - 3,686 SF</li> </ul>
<b>PARKING</b>	• Underground and surface parking
<b>LEASE RATE</b>	• \$14.50 PSF
<b>2024 ESTIMATED TAX &amp; OPER. EXP.</b>	• \$13.64 PSF



HOME



PROPERTY INFORMATION



PROPERTY AVAILABILITIES



PROPERTY AERIAL



PROPERTY MAP



PROPERTY IMAGES



CONTACT



**CUSHMAN & WAKEFIELD**

3500 American Blvd W | Suite 200  
 Minneapolis, MN 55431  
 cushmanwakefield.com

**RYAN HAMPSON**  
 Senior Associate  
 +1 952 465 3309  
 ryan.hampson@cushwake.com

**AARON BARNARD, SIOR, CCIM**  
 Senior Director  
 +1 952 465 3372  
 aaron.barnard@cushwake.com

**GORDIE HAMPSON**  
 Senior Director  
 +1 952 465 3310  
 gordie.hampson@cushwake.com



7701 YORK AVENUE SOUTH  
EDINA, MN

# AVAILABILITIES

Click Suite to View Floorplan

Suite Number	Square Footage
100	1,973 (available 60 days)
130	2,031
250	10,000
360	1,405 - 3,686



HOME

PROPERTY INFORMATION

PROPERTY AVAILABILITIES

PROPERTY AERIAL

PROPERTY MAP

PROPERTY IMAGES

CONTACT



3500 American Blvd W | Suite 200  
Minneapolis, MN 55431  
cushmanwakefield.com

**RYAN HAMPSON**  
Senior Associate  
+1 952 465 3309  
ryan.hampson@cushwake.com

**AARON BARNARD, SIOR, CCIM**  
Senior Director  
+1 952 465 3372  
aaron.barnard@cushwake.com

**GORDIE HAMPSON**  
Senior Director  
+1 952 465 3310  
gordie.hampson@cushwake.com

# YORK PLACE OFFICE

7701 YORK AVENUE SOUTH  
EDINA, MN

HOME

PROPERTY INFORMATION

PROPERTY AVAILABILITIES

PROPERTY AERIAL

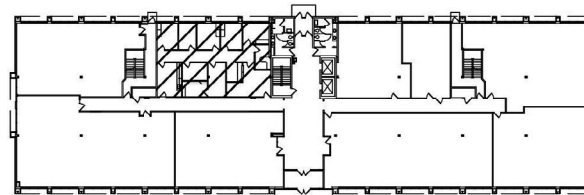
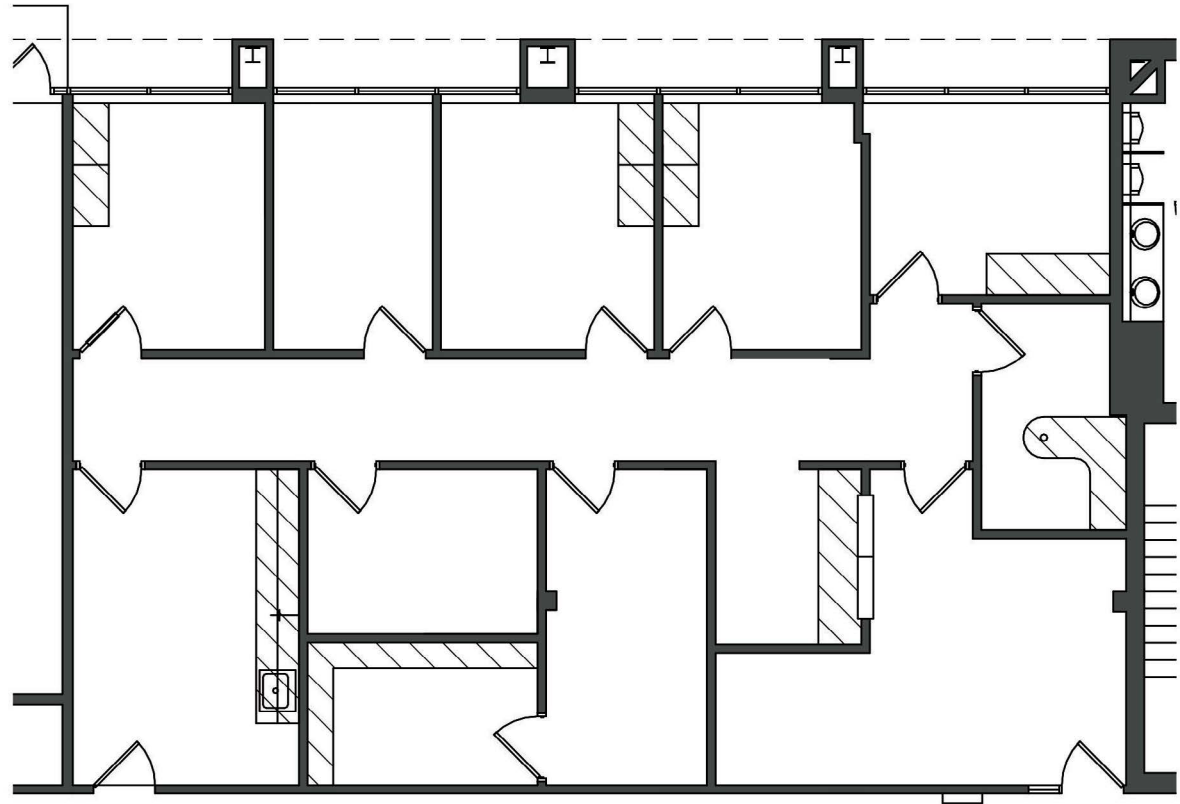
PROPERTY MAP

PROPERTY IMAGES

CONTACT

## FLOOR PLAN

SUITE 100 - 1,973 SF (AVAILABLE 60 DAYS)



Key Plan - 1st Floor



**CUSHMAN &  
WAKEFIELD**

3500 American Blvd W | Suite 200  
Minneapolis, MN 55431  
cushmanwakefield.com

**RYAN HAMPSON**  
Senior Associate  
+1 952 465 3309  
ryan.hampson@cushwake.com

**AARON BARNARD, SIOR, CCIM**  
Senior Director  
+1 952 465 3372  
aaron.barnard@cushwake.com

**GORDIE HAMPSON**  
Senior Director  
+1 952 465 3310  
gordie.hampson@cushwake.com

# YORK PLACE OFFICE

7701 YORK AVENUE SOUTH  
EDINA, MN

HOME

PROPERTY INFORMATION

PROPERTY AVAILABILITIES

PROPERTY AERIAL

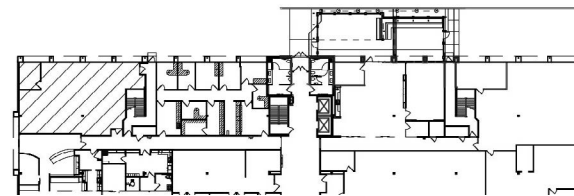
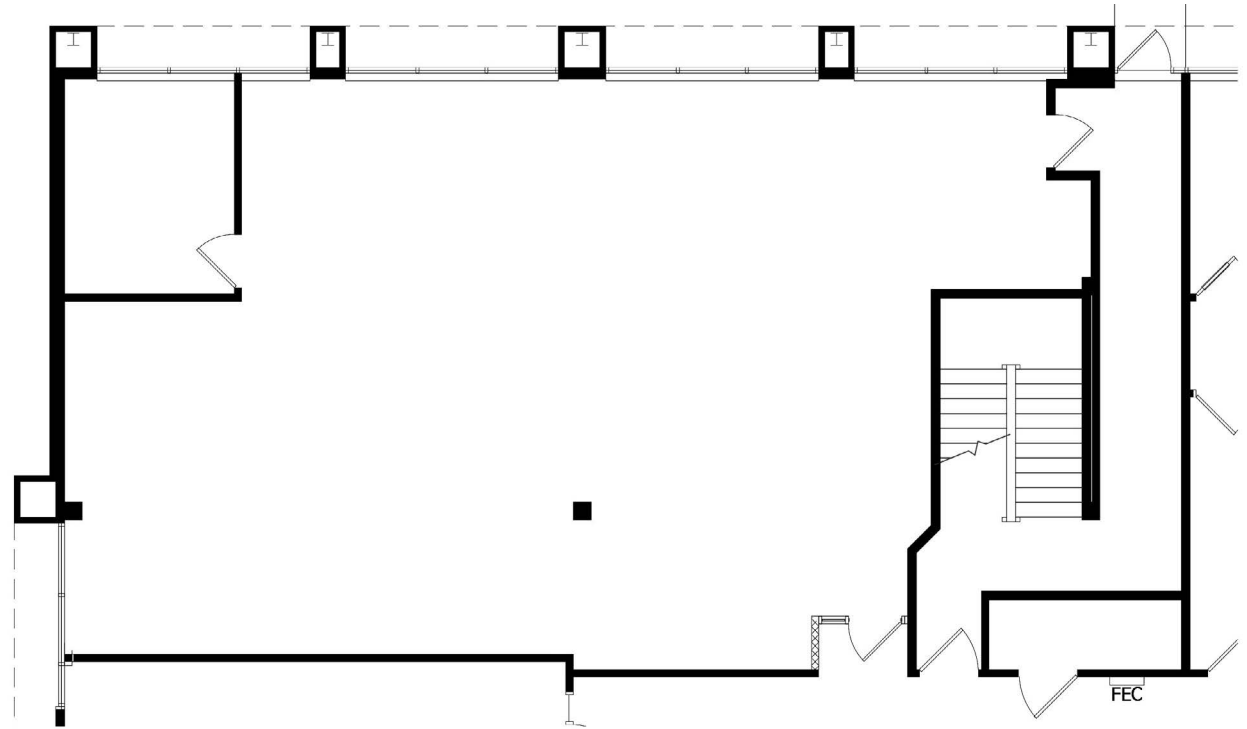
PROPERTY MAP

PROPERTY IMAGES

CONTACT

## FLOOR PLAN

SUITE 130 - 2,031 SF



Key Plan - 1st Floor



**CUSHMAN & WAKEFIELD**

3500 American Blvd W | Suite 200  
Minneapolis, MN 55431  
cushmanwakefield.com

**RYAN HAMPSON**  
Senior Associate  
+1 952 465 3309  
ryan.hampson@cushwake.com

**AARON BARNARD, SIOR, CCIM**  
Senior Director  
+1 952 465 3372  
aaron.barnard@cushwake.com

**GORDIE HAMPSON**  
Senior Director  
+1 952 465 3310  
gordie.hampson@cushwake.com

# YORK PLACE OFFICE

7701 YORK AVENUE SOUTH  
EDINA, MN



HOME



PROPERTY INFORMATION



PROPERTY AVAILABILITIES



PROPERTY AERIAL



PROPERTY MAP



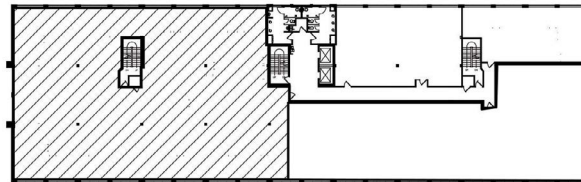
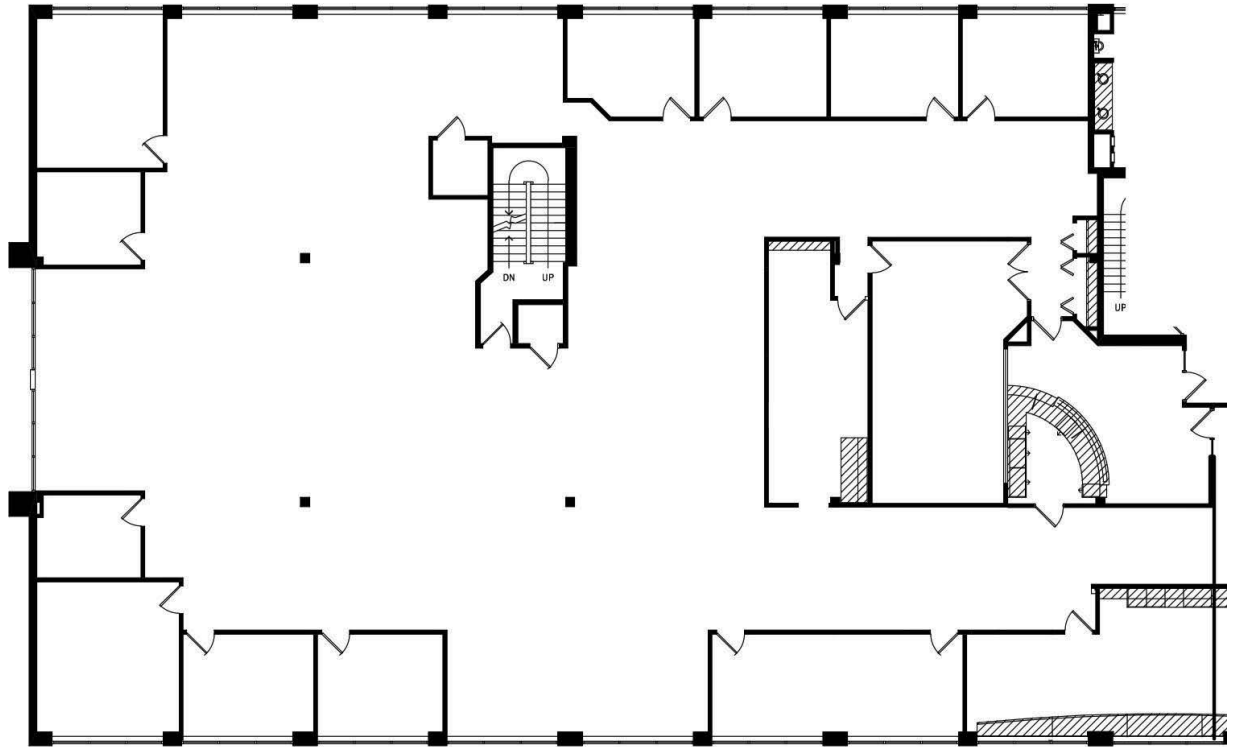
PROPERTY IMAGES



CONTACT

## FLOOR PLAN

SUITE 250 - 10,000 SF



Key Plan - 2nd Floor



**CUSHMAN &  
WAKEFIELD**

3500 American Blvd W | Suite 200  
Minneapolis, MN 55431  
cushmanwakefield.com

**RYAN HAMPSON**  
Senior Associate  
+1 952 465 3309  
ryan.hampson@cushwake.com

**AARON BARNARD, SIOR, CCIM**  
Senior Director  
+1 952 465 3372  
aaron.barnard@cushwake.com

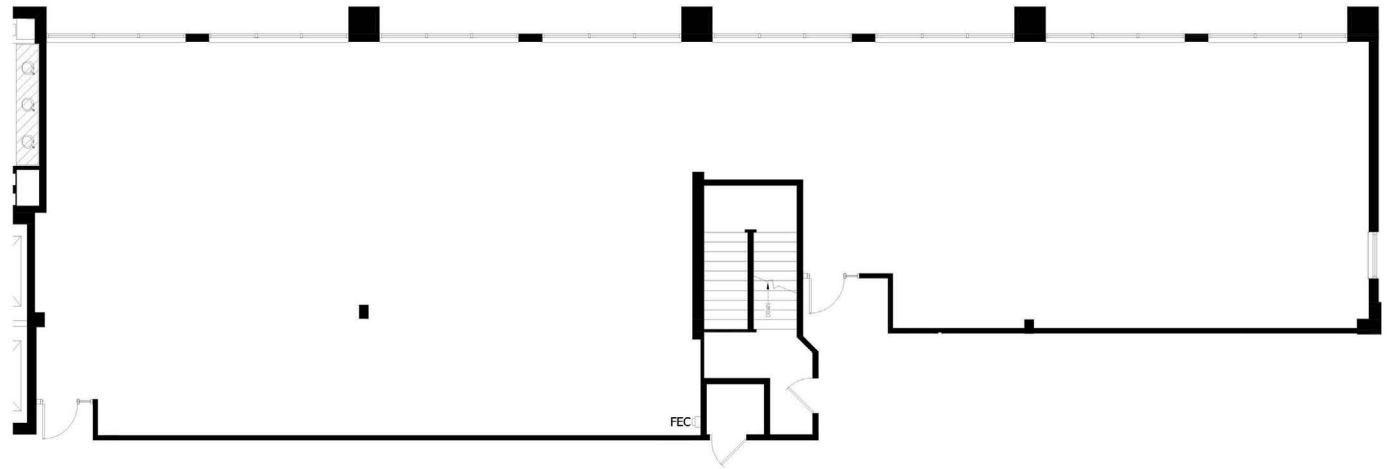
**GORDIE HAMPSON**  
Senior Director  
+1 952 465 3310  
gordie.hampson@cushwake.com

# YORK PLACE OFFICE

7701 YORK AVENUE SOUTH  
EDINA, MN

## FLOOR PLAN

SUITE 360 - 1,405 - 3,686 SF



Key Plan - 3rd Floor

HOME

PROPERTY INFORMATION

PROPERTY AVAILABILITIES

PROPERTY AERIAL

PROPERTY MAP

PROPERTY IMAGES

CONTACT



**CUSHMAN &  
WAKEFIELD**

3500 American Blvd W | Suite 200  
Minneapolis, MN 55431  
cushmanwakefield.com

**RYAN HAMPSON**  
Senior Associate  
+1 952 465 3309  
ryan.hampson@cushwake.com

**AARON BARNARD, SIOR, CCIM**  
Senior Director  
+1 952 465 3372  
aaron.barnard@cushwake.com

**GORDIE HAMPSON**  
Senior Director  
+1 952 465 3310  
gordie.hampson@cushwake.com

# YORK PLACE OFFICE

7701 YORK AVENUE SOUTH  
EDINA, MN

HOME

PROPERTY INFORMATION

PROPERTY AVAILABILITIES

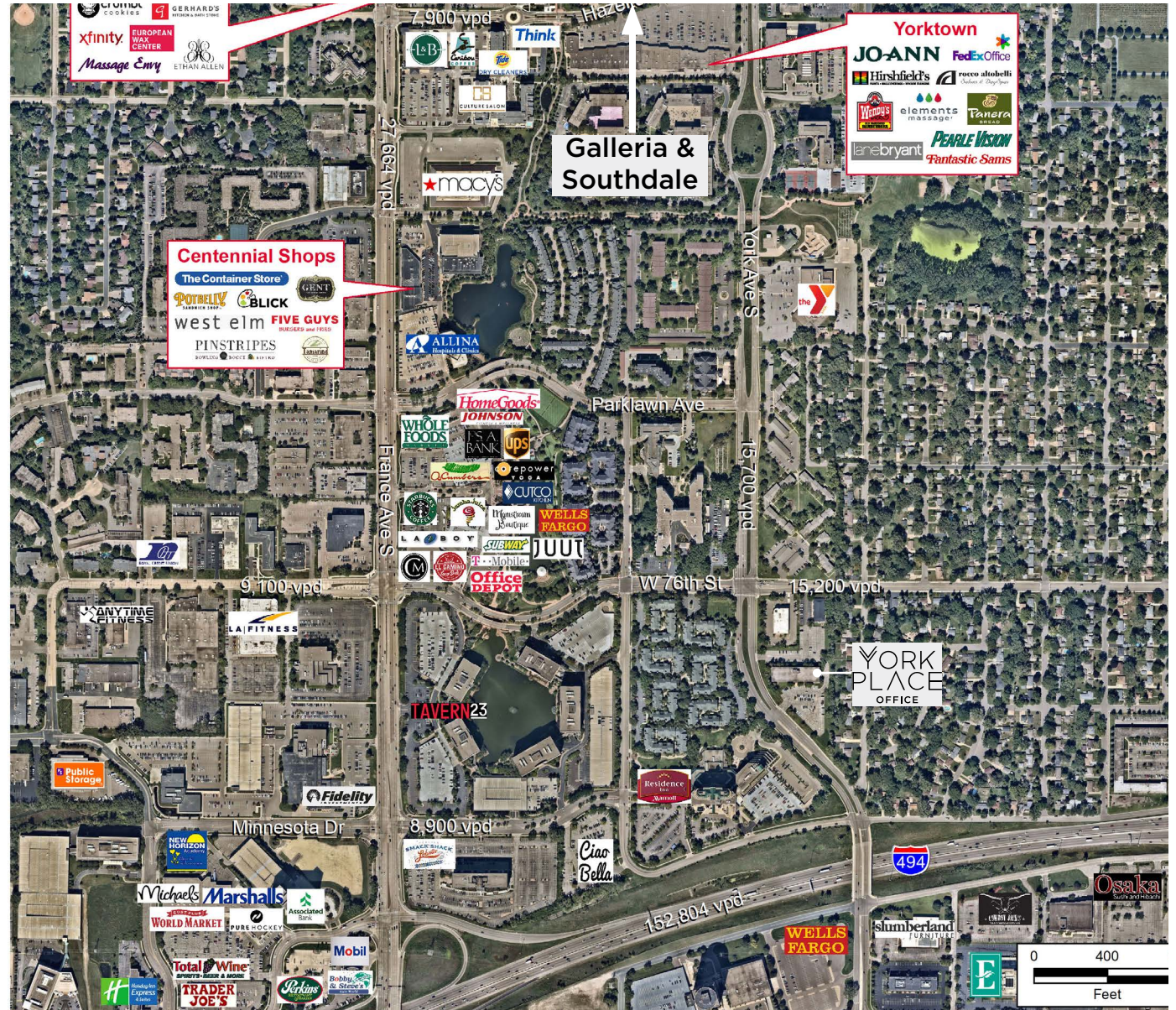
PROPERTY AERIAL

PROPERTY MAP

PROPERTY IMAGES

CONTACT

## PROPERTY AERIAL



**CUSHMAN & WAKEFIELD**

3500 American Blvd W | Suite 200  
Minneapolis, MN 55431  
cushmanwakefield.com

**RYAN HAMPSON**  
Senior Associate  
+1 952 465 3309  
ryan.hampson@cushwake.com

**AARON BARNARD, SIOR, CCIM**  
Senior Director  
+1 952 465 3372  
aaron.barnard@cushwake.com

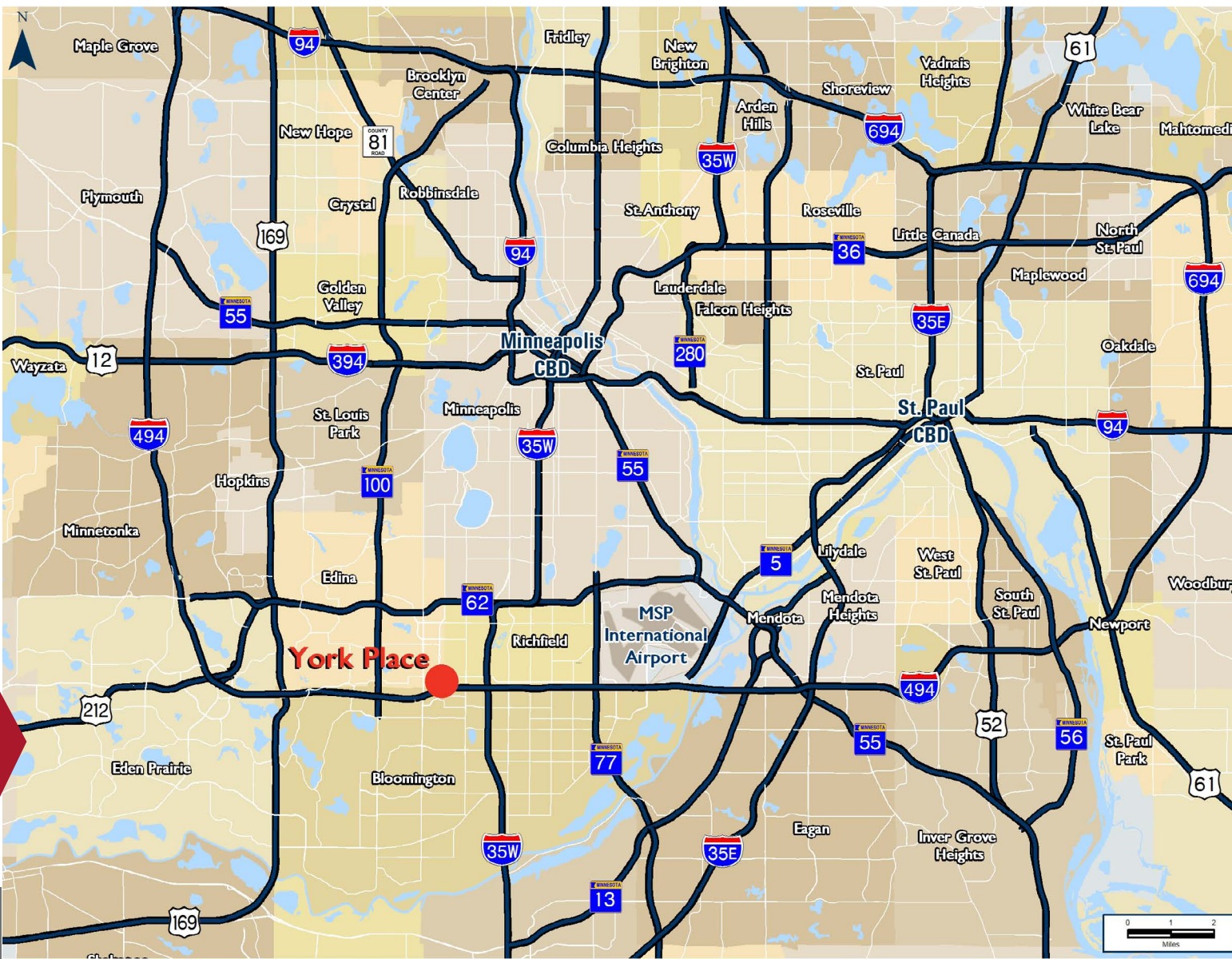
**GORDIE HAMPSON**  
Senior Director  
+1 952 465 3310  
gordie.hampson@cushwake.com



# YORK PLACE OFFICE

7701 YORK AVENUE SOUTH  
EDINA, MN

## PROPERTY MAP



-  HOME
-  PROPERTY INFORMATION
-  PROPERTY AVAILABILITIES
-  PROPERTY AERIAL
-  PROPERTY MAP
-  PROPERTY IMAGES
-  CONTACT



**CUSHMAN & WAKEFIELD**

3500 American Blvd W | Suite 200  
Minneapolis, MN 55431  
cushmanwakefield.com

**RYAN HAMPSON**  
Senior Associate  
+1 952 465 3309  
ryan.hampson@cushwake.com

**AARON BARNARD, SIOR, CCIM**  
Senior Director  
+1 952 465 3372  
aaron.barnard@cushwake.com

**GORDIE HAMPSON**  
Senior Director  
+1 952 465 3310  
gordie.hampson@cushwake.com

# YORK PLACE OFFICE

7701 YORK AVENUE SOUTH  
EDINA, MN

## PROPERTY IMAGES



HOME



PROPERTY INFORMATION



PROPERTY AVAILABILITIES



PROPERTY AERIAL



PROPERTY MAP



PROPERTY IMAGES



CONTACT



**CUSHMAN &  
WAKEFIELD**

3500 American Blvd W | Suite 200  
Minneapolis, MN 55431  
cushmanwakefield.com

**RYAN HAMPSON**  
Senior Associate  
+1 952 465 3309  
ryan.hampson@cushwake.com

**AARON BARNARD, SIOR, CCIM**  
Senior Director  
+1 952 465 3372  
aaron.barnard@cushwake.com

**GORDIE HAMPSON**  
Senior Director  
+1 952 465 3310  
gordie.hampson@cushwake.com



BROKER CONTACT

RYAN HAMPSON
Senior Associate
+1 952 465 3309
ryan.hampson@cushwake.com

AARON BARNARD, SIOR, CCIM
Senior Director
+1 952 465 3372
aaron.barnard@cushwake.com

GORDIE HAMPSON
Senior Director
+1 952 465 3310
gordie.hampson@cushwake.com



HOME

PROPERTY INFORMATION

PROPERTY AVAILABILITIES

PROPERTY AERIAL

PROPERTY MAP

PROPERTY IMAGES

CONTACT

CUSHMAN & WAKEFIELD
3500 American Blvd W
Suite 200
Minneapolis, MN 55431

©2024 Cushman & Wakefield. All rights reserved. The information contained in this communication is strictly confidential. This information has been obtained from sources believed to be reliable but has not been verified. No warranty or representation, express or implied, is made as to the condition of the property (or properties) referenced herein or as to the accuracy or completeness of the information contained herein, and same is submitted subject to errors, omissions, change of price, rental or other conditions, withdrawal without notice, and to any special listing conditions imposed by the property owner(s). Any projections, opinions or estimates are subject to uncertainty and do not signify current or future property performance.