



CUSHMAN &
WAKEFIELD



6,350 SF SUBLEASE

8500 NORMANDALE LAKE BLVD
SUITE 400
BLOOMINGTON, MN 55437

BUILDING FEATURES



ENJOY THE FRIENDLY AND FAMILIAR FACES OF
OVER 300 STAFF MEMBERS



DEDICATED AND RESPONSIVE MANAGEMENT TEAM



A MAINTENANCE TEAM WHO PRIDES ITSELF ON
FAST AND EFFICIENT SERVICE



HIGHLY VISUAL SECURITY STAFF AVAILABLE 24/7

- Located within the prestigious Normandale Lake Office Park
- Minutes from multiple major highways and within close proximity to MSP Airport
- Immediate access to the 2,500-acre Normandale Lake Recreational Area
- True Class A+ campus setting with numerous amenities within walking distance

AVAILABLE SPACE



- 6,350 SF on the 4th floor
- Immediate occupancy available
- Negotiable rental rate
- Furniture available
- Term through June 30, 2029
- Multiple private offices
- Conference room
- Kitchen area
- Expansive views with abundant natural light



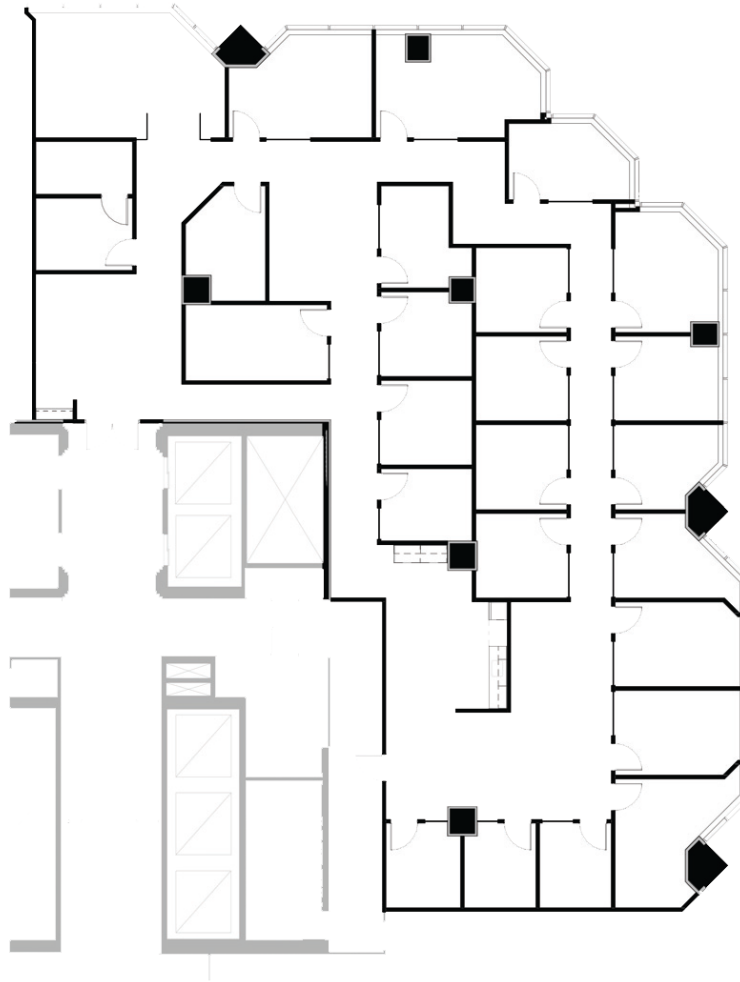


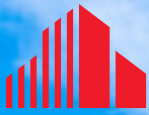


FLOOR PLAN

SUITE 400

6,350 RSF





**CUSHMAN &
WAKEFIELD**

CONTACT INFO

Trinette Wacker

Director

trinette.wacker@cushwake.com

+1 952 346 4643

cushmanwakefield.com

©2021 Cushman & Wakefield. All rights reserved. The information contained in this communication is strictly confidential. This information has been obtained from sources believed to be reliable but has not been verified. NO WARRANTY OR REPRESENTATION, EXPRESS OR IMPLIED, IS MADE AS TO THE CONDITION OF THE PROPERTY (OR PROPERTIES) REFERENCED HEREIN OR AS TO THE ACCURACY OR COMPLETENESS OF THE INFORMATION CONTAINED HEREIN, AND SAME IS SUBMITTED SUBJECT TO ERRORS, OMISSIONS, CHANGE OF PRICE, RENTAL OR OTHER CONDITIONS, WITHDRAWAL WITHOUT NOTICE, AND TO ANY SPECIAL LISTING CONDITIONS IMPOSED BY THE PROPERTY OWNER(S). ANY PROJECTIONS, OPINIONS OR ESTIMATES ARE SUBJECT TO UNCERTAINTY AND DO NOT SIGNIFY CURRENT OR FUTURE PROPERTY PERFORMANCE.