

E V E R Y T H I N G

FIVE TEN  
MARQUETTE

510 MAP

A PLACE FOR  
**EVERYTHING**



RQUETTE

# EVERYTHING IN ITS PLACE





Birds migrate from areas of low or decreasing resources to areas of high or increasing resources.

Instinctively moving toward an environment that feeds one's core is a natural behavior.

Discover how 510 Marquette serves as a hub of connection to everything your employees need.



FIVE TEN  
MARQUETTE





MINNEAP



510 MARQUETTE

# COLIS CBD





# URBAN LA





Everything today's trending workforce demands is living and thriving within an arm's reach of this stunning downtown location.

Beautifully positioned in the Minneapolis urban core, 510 Marquette sits at the heart of industry and innovation.

# MINISCAP







SOO LINE  
BUILDING

TRANS



DEFINITE  
THRUWAY  
DO NOT TURN  
ON TO TRACKS



1111



# 510

Everything intersects here. Positioned at the corner of 5th and Marquette, getting to and from the office is a breeze. Rail, Bus, Skyway, Bicycle, Automobile: Any way your staff desires to get to work, 510 Marquette easily accommodates them all.







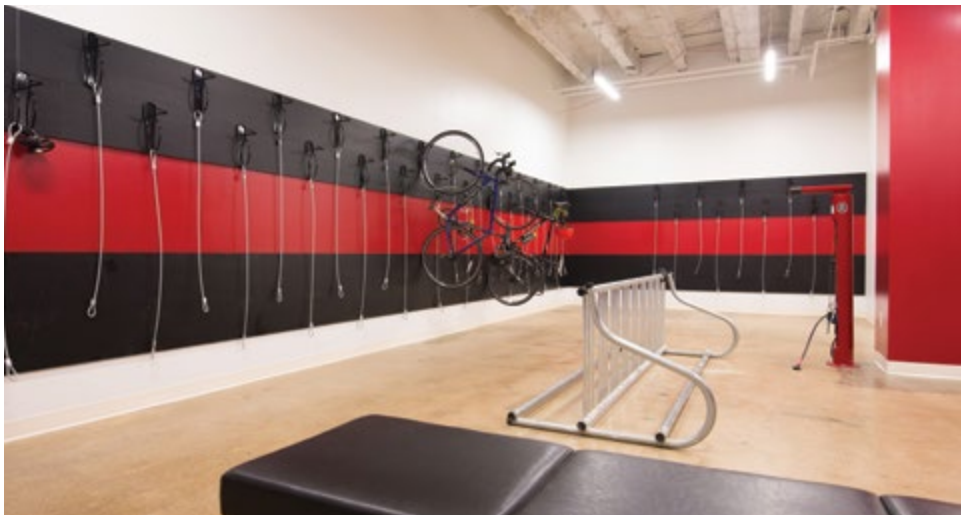
ICONIC



# RENEWAL

Everything old is new again. High ceilings. Open floor plans. Original brick. Stone. Slate. 510 Marquette's natural beauty offers a solid foundation on which you have complete flexibility to punctuate and convey your brand culture.









**FL  
07**

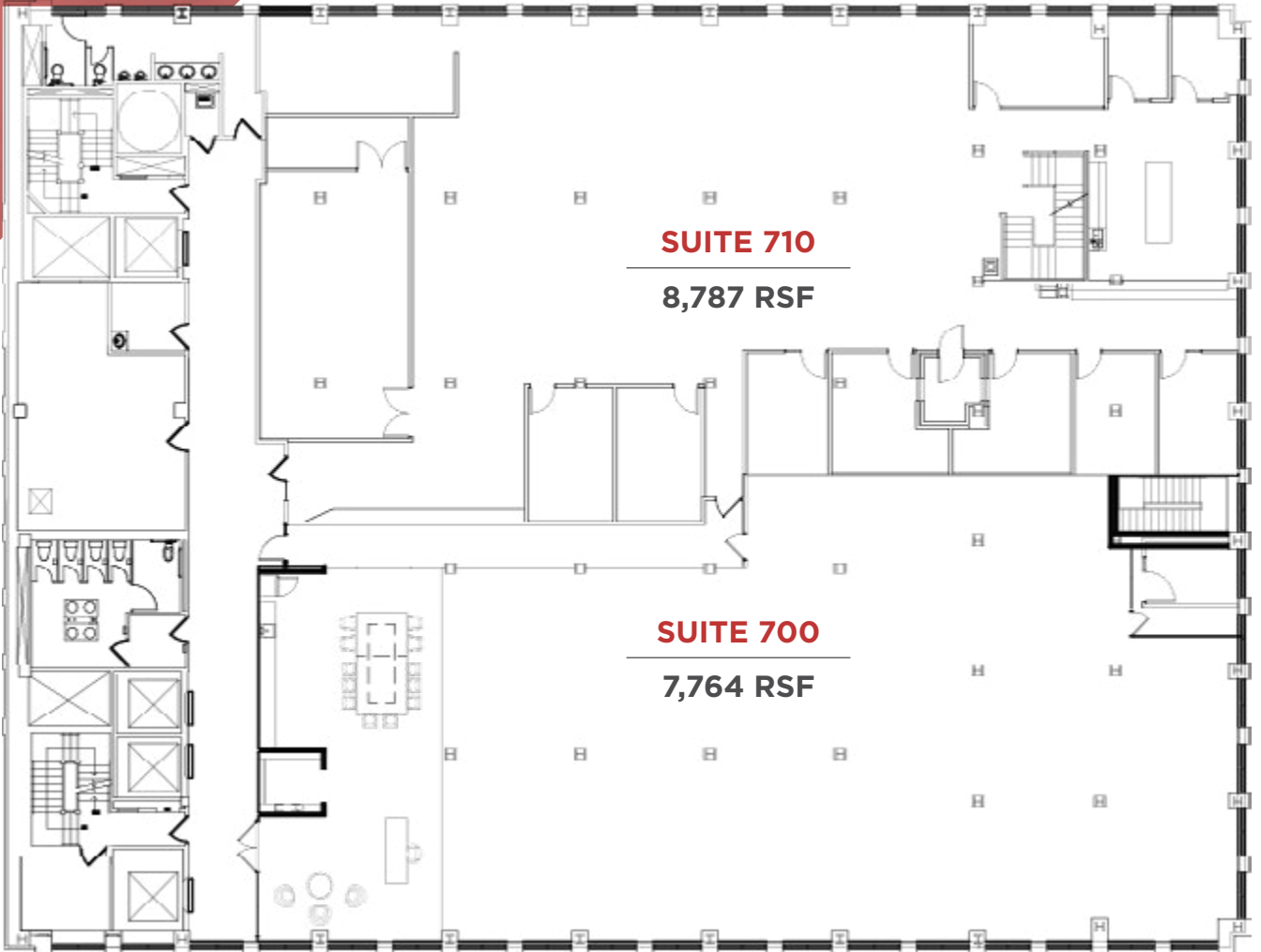
**16,551** RSF

**SUITE 710**

**8,787** RSF

**SUITE 700**

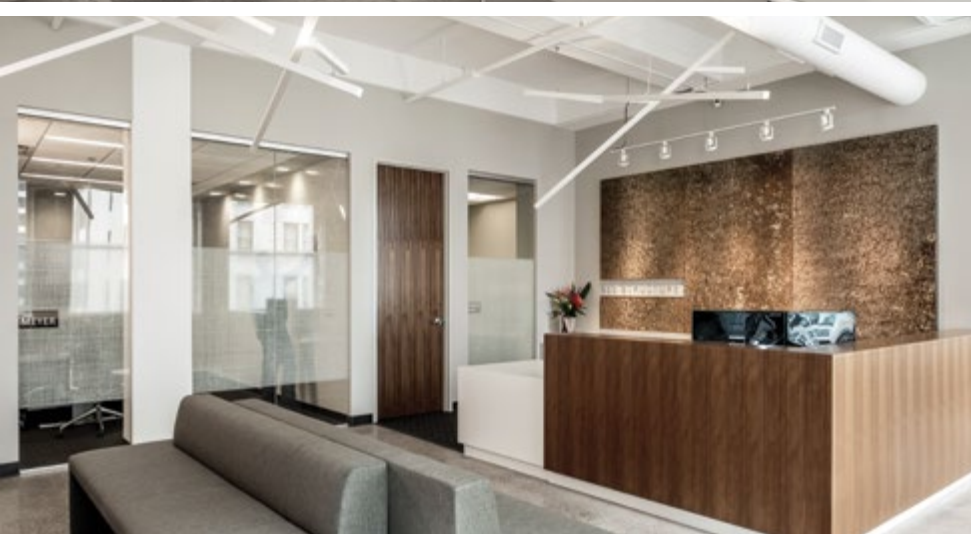
**7,764** RSF



FIFTH STREET

MARQUETTE AVENUE





**FL  
08**

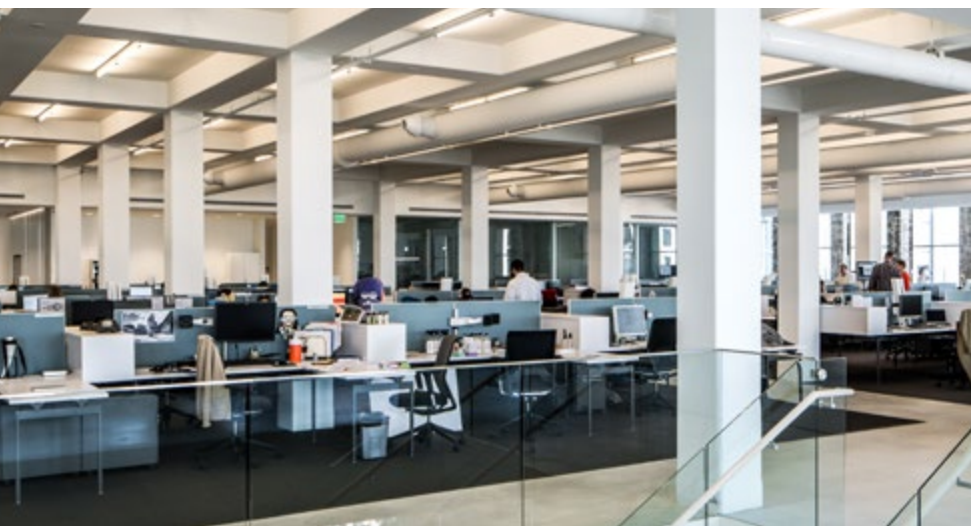
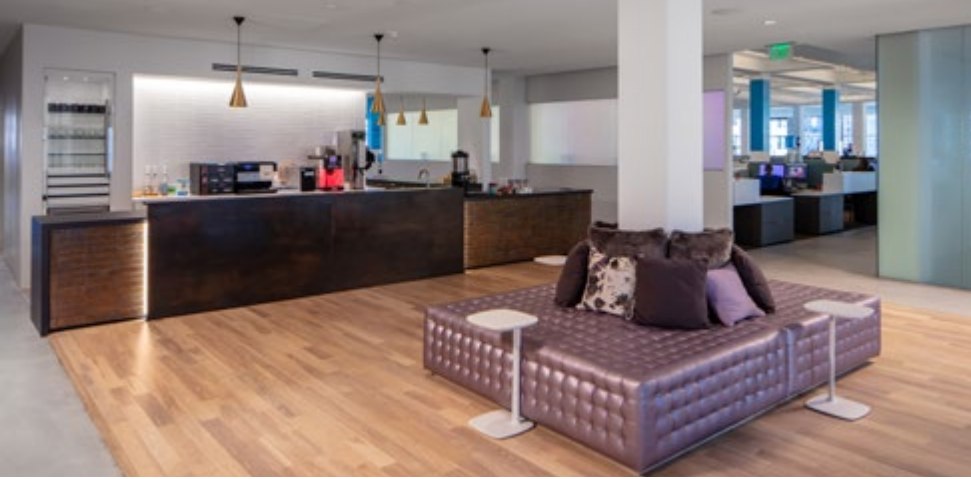
**17,577** RSF



FIFTH STREET

MARQUETTE AVENUE



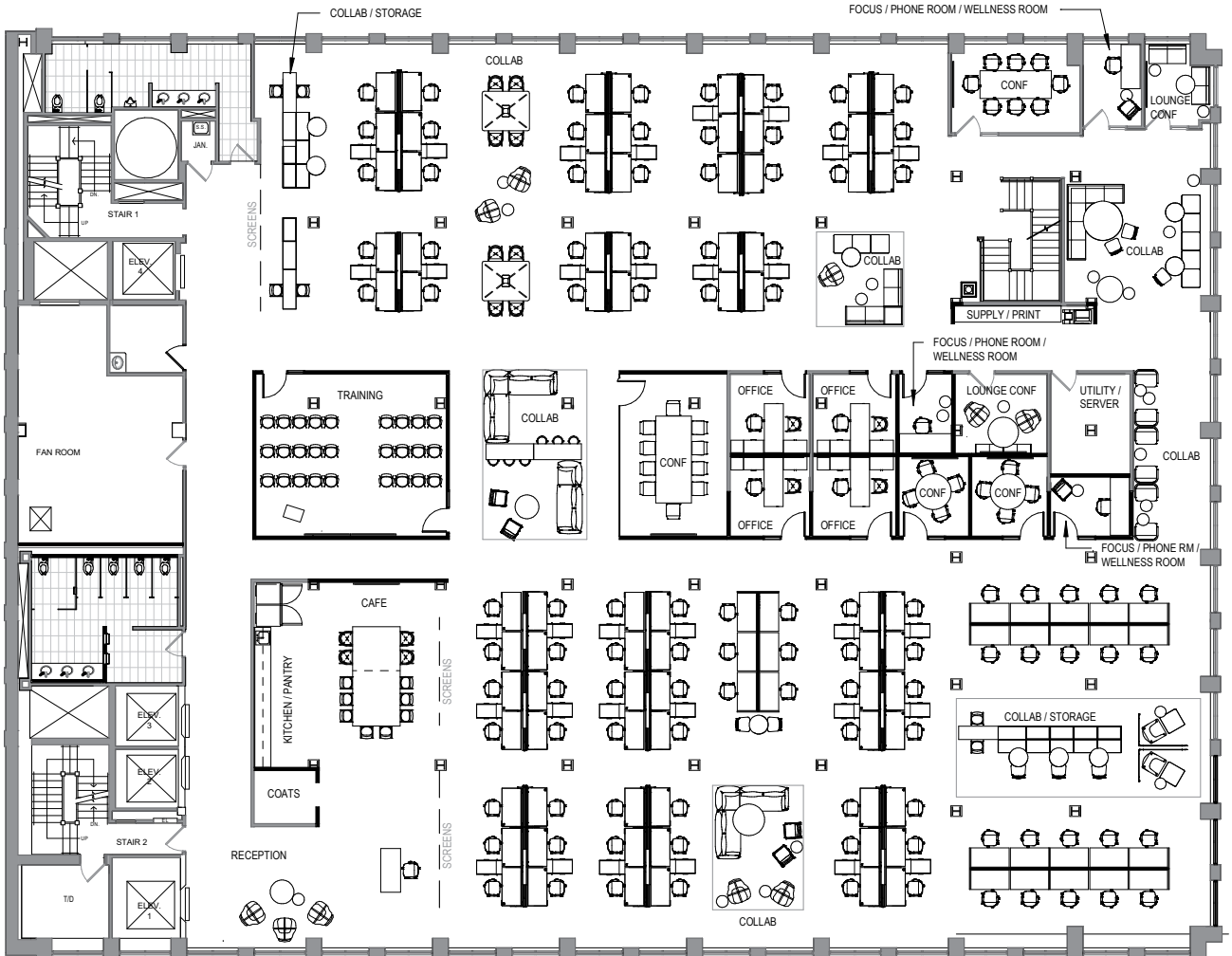


FL 07 + 08

34,128

RSF

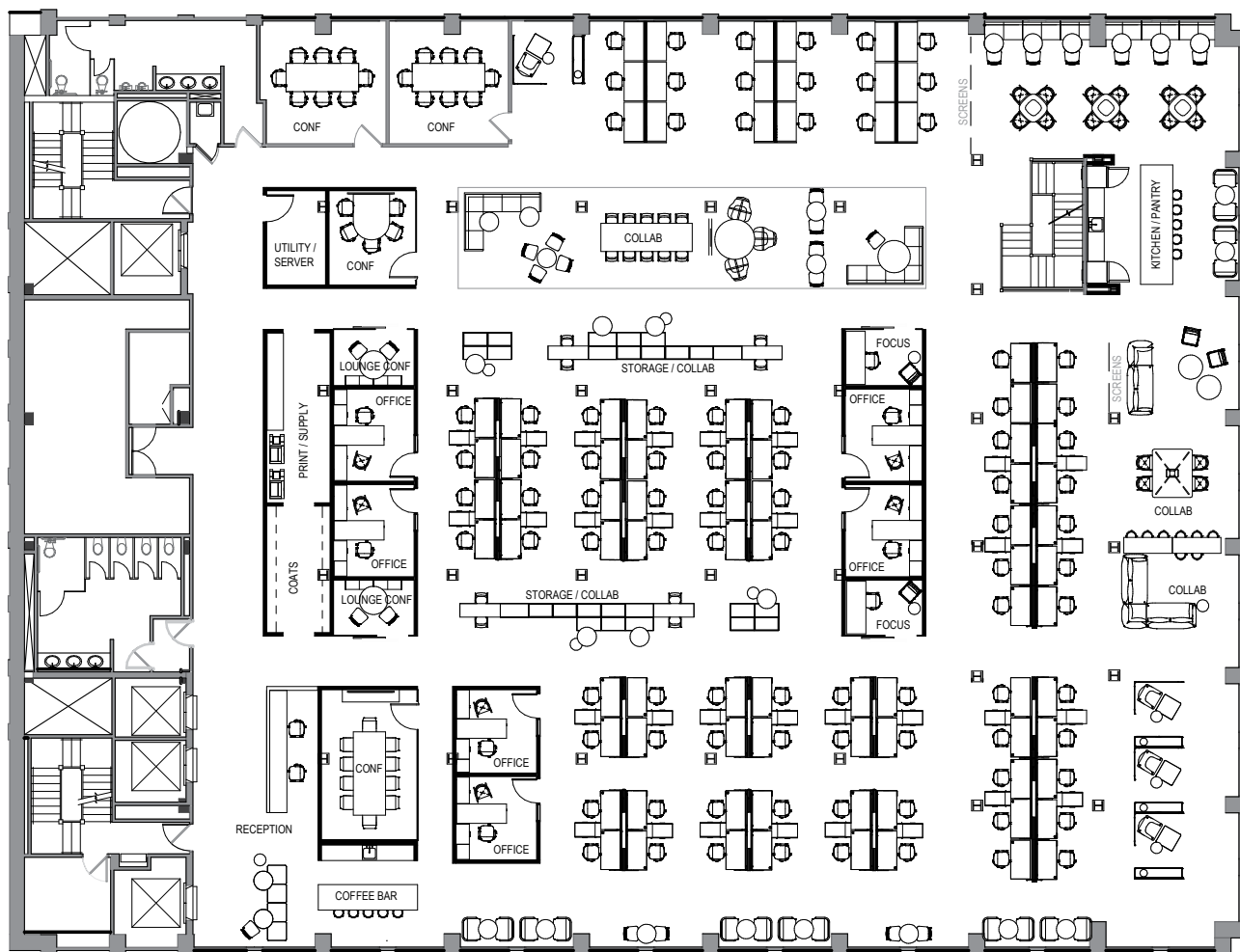
# SAMPLE



FL 07



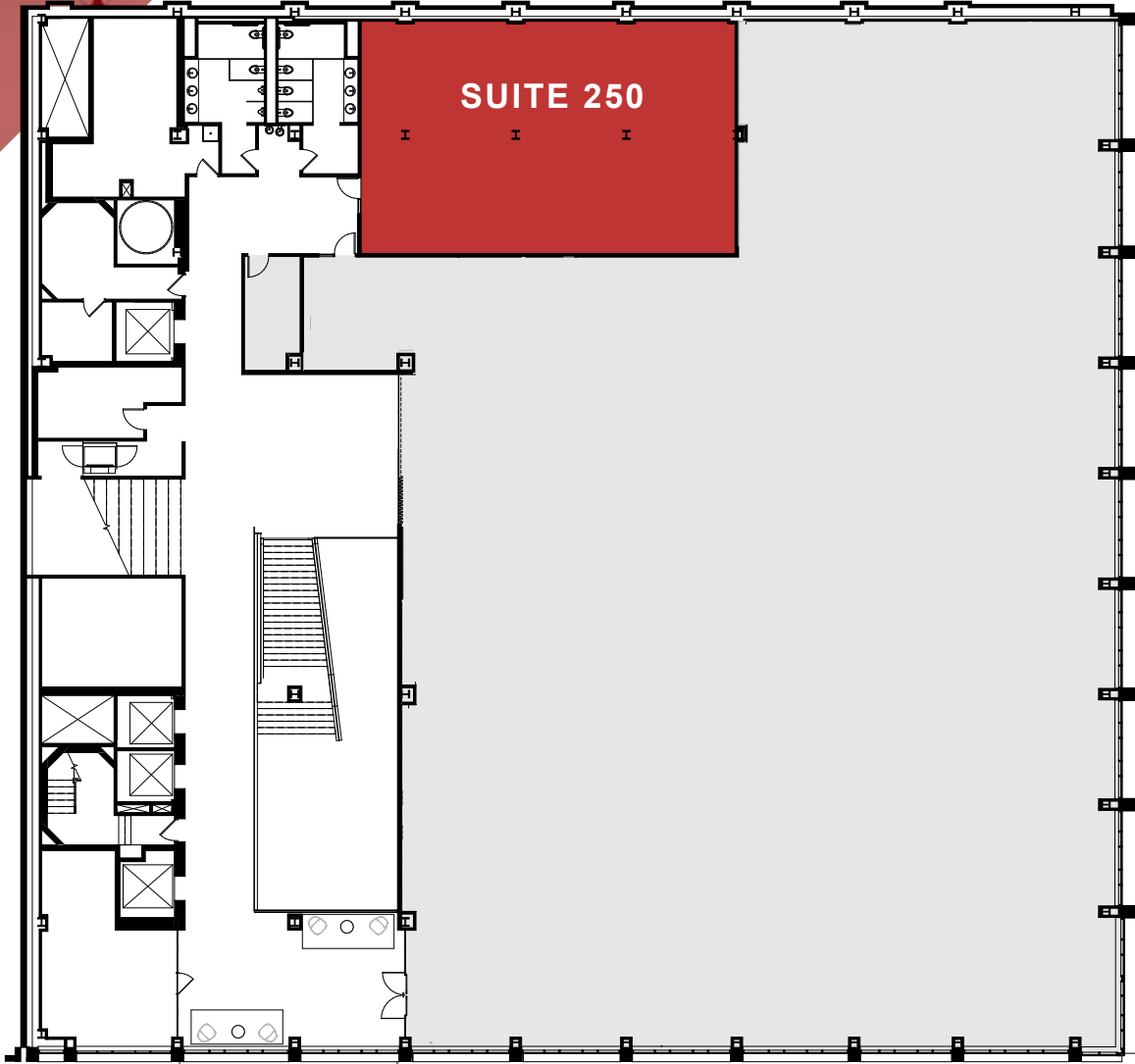
# FIT PLAN



**FL 08**

**FL  
02**

**2,210** RSF









E V E R Y T H I N G

FIVE TEN  
MARQUETTE

**EVERYTHING STARTS WITH A CONNECTION**

**TOM TRACY | 612 280 3299**  
tom.tracy@cushwake.com

**KATIE TUFFORD | 612 413 5007**  
katie.tufford@cushwake.com

**PETER FITZGERALD | 952 241 1111**  
peter.fitzgerald@cushwake.com