



OFFICE SPACE  
FOR SUBLEASE

604 KING STREET WEST

# DETAILS

**Available Space:** 2<sup>nd</sup> Floor: 15,042 SF  
3<sup>rd</sup> Floor: 15,042 SF  
Total: 30,084 SF

**Net Asking Rate:** Please call listing agents to discuss

**Additional Rent:** \$24.15 PSF (2023 Est.)

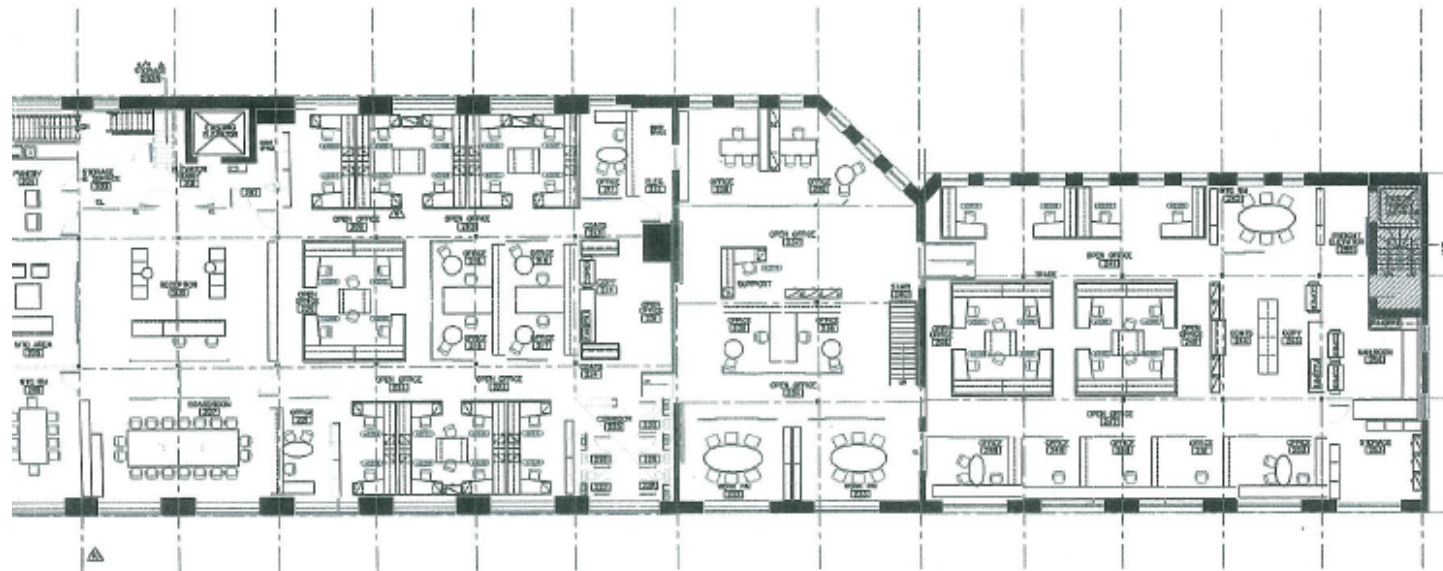
**Occupancy** Immediate

**Term** June 29, 2025

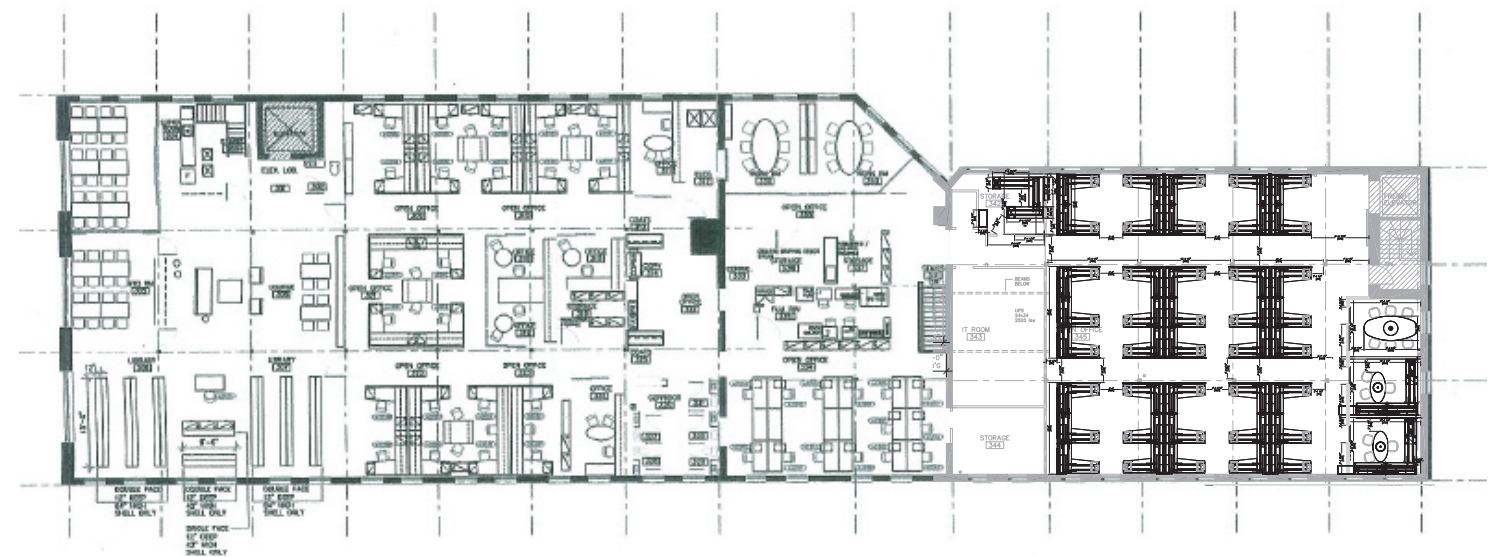
# HIGHLIGHTS

- One of King West's premier "brick and beam" buildings
- Beautifully improved with a mix of open area, offices, meeting rooms, boardrooms, reception, and kitchen/lounge
- High-end creative space with soaring ceilings and ample natural light
- Furniture is available
- Steps to King Street Streetcar
- Located in Toronto's most trendy and vibrant neighborhood featuring the city's best entertainment, restaurants and amenities

## 2<sup>nd</sup> Floor 15,042 SF



## 3<sup>rd</sup> Floor 15,042 SF



2<sup>ND</sup> FLOOR  
15,042 SF



604 KING STREET WEST

3<sup>RD</sup> FLOOR  
15,042 SF





## FOR MORE INFORMATION PLEASE CONTACT:

**CAMERON MITCHELL\***  
Vice President  
416 359 2445  
cam.mitchell@cushwake.com

**MATTHEW MCTAVISH\*\***  
Vice President  
416 659 0195  
mattehew.mctavish@cushwake.com

**Cushman & Wakefield ULC, Brokerage**  
161 Bay Street, Suite 1500  
Toronto, ON M5J 2S1  
416 862 0611

### **Cushman & Wakefield ULC, Brokerage**

©2023 Cushman & Wakefield ULC. All rights reserved. The information contained in this communication is strictly confidential. This information has been obtained from sources believed to be reliable but has not been verified. NO WARRANTY OR REPRESENTATION, EXPRESS OR IMPLIED, IS MADE AS TO THE CONDITION OF THE PROPERTY (OR PROPERTIES) REFERENCED HEREIN OR AS TO THE ACCURACY OR COMPLETENESS OF THE INFORMATION CONTAINED HEREIN, AND SAME IS SUBMITTED SUBJECT TO ERRORS, OMISSIONS, CHANGE OF PRICE, RENTAL OR OTHER CONDITIONS, WITHDRAWAL WITHOUT NOTICE, AND TO ANY SPECIAL LISTING CONDITIONS IMPOSED BY THE PROPERTY OWNER(S). ANY PROJECTIONS, OPINIONS OR ESTIMATES ARE SUBJECT TO UNCERTAINTY AND DO NOT SIGNIFY CURRENT OR FUTURE PROPERTY PERFORMANCE. \*Sales Representative \*\*Broker

