

FOR LEASE

WILLOW PROFESSIONAL BUILDING
2525 WILLOW STREET
VANCOUVER, BC



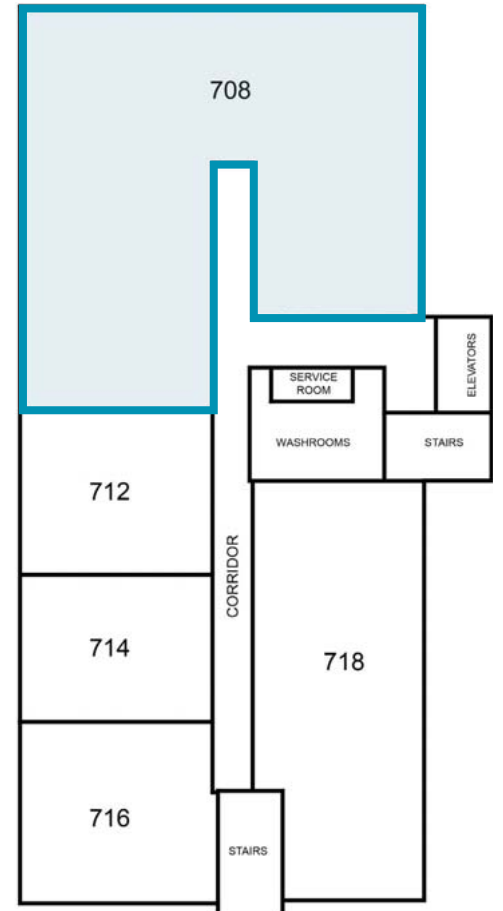
David JW Mackay
Personal Real Estate Corporation
Senior Associate
604 639 9355
david.mackay@cushwake.com

FOR LEASE

WILLOW PROFESSIONAL BUILDING
2525 WILLOW STREET
 VANCOUVER, BC

AVAILABLE AREAS

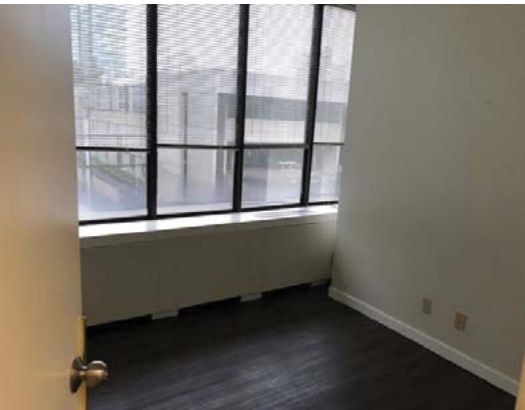
SUITE	AREA	BASE RENT	ADDITIONAL RENT	DETAILS
506	1,050 sf	\$17.00 psf	\$21.19 psf (2022)	Open layout with kitchen
509	710 sf	\$17.00 psf	\$21.19 psf (2022)	2 offices, kitchenette and open plan
514	1,641 sf	\$17.00 psf	\$21.19 psf (2022)	Available May 1, 2023
610	2,245 sf	\$17.00 psf	\$21.19 psf (2022)	8 treatment rooms, reception and small kitchen. Available July 1, 2023
708	3,239 sf	\$17.00 psf	\$21.19 psf (2022)	8 offices & 7 workstations



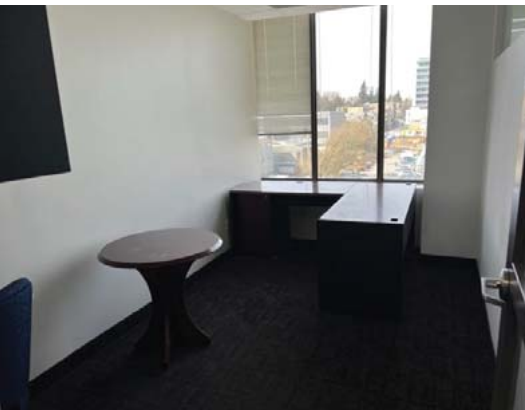
SUITE 506



SUITE 509



SUITE 708



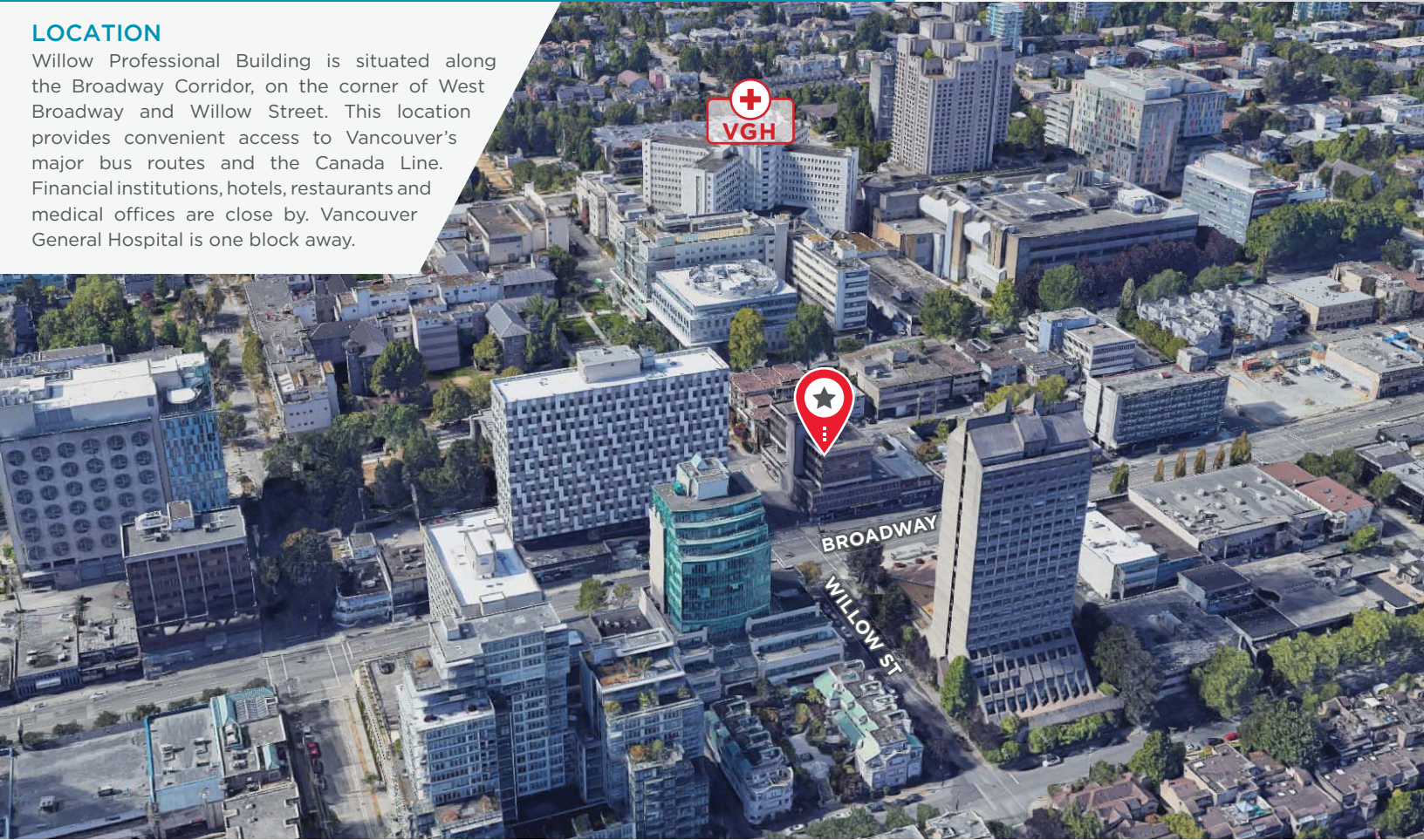
FOR LEASE

WILLOW PROFESSIONAL BUILDING
2525 WILLOW STREET
VANCOUVER, BC



LOCATION

Willow Professional Building is situated along the Broadway Corridor, on the corner of West Broadway and Willow Street. This location provides convenient access to Vancouver's major bus routes and the Canada Line. Financial institutions, hotels, restaurants and medical offices are close by. Vancouver General Hospital is one block away.



David JW Mackay

Personal Real Estate Corporation
Senior Associate
604 639 9355
david.mackay@cushwake.com

E.&O.E.: This communication is not intended to cause or induce breach of an existing agency agreement. The information contained herein was obtained from sources which we deem reliable and, while thought to be correct, is not guaranteed by Cushman & Wakefield ULC (10/23/bg)