

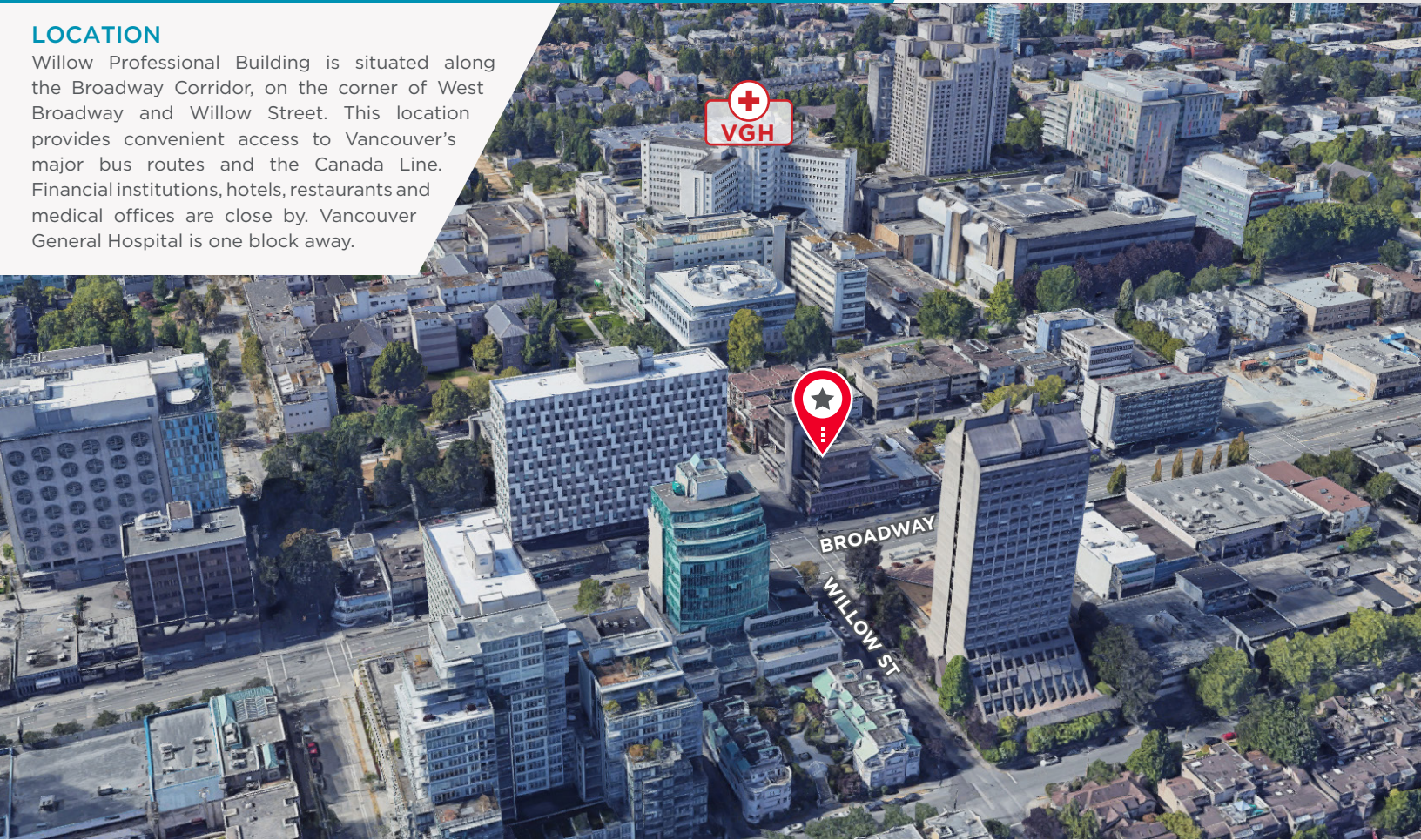
FOR LEASE

WILLOW PROFESSIONAL BUILDING
2525 WILLOW STREET
VANCOUVER, BC



LOCATION

Willow Professional Building is situated along the Broadway Corridor, on the corner of West Broadway and Willow Street. This location provides convenient access to Vancouver's major bus routes and the Canada Line. Financial institutions, hotels, restaurants and medical offices are close by. Vancouver General Hospital is one block away.



David JW Mackay

Personal Real Estate Corporation
Senior Associate
+1 604 639 9355
david.mackay@cushwake.com

E.&O.E.: This communication is not intended to cause or induce breach of an existing agency agreement. The information contained herein was obtained from sources which we deem reliable and, while thought to be correct, is not guaranteed by Cushman & Wakefield ULC (05/23/bg)

FOR LEASE

WILLOW PROFESSIONAL BUILDING
2525 WILLOW STREET
VANCOUVER, BC



David JW Mackay
Personal Real Estate Corporation
Senior Associate
+1 604 639 9355
david.mackay@cushwake.com

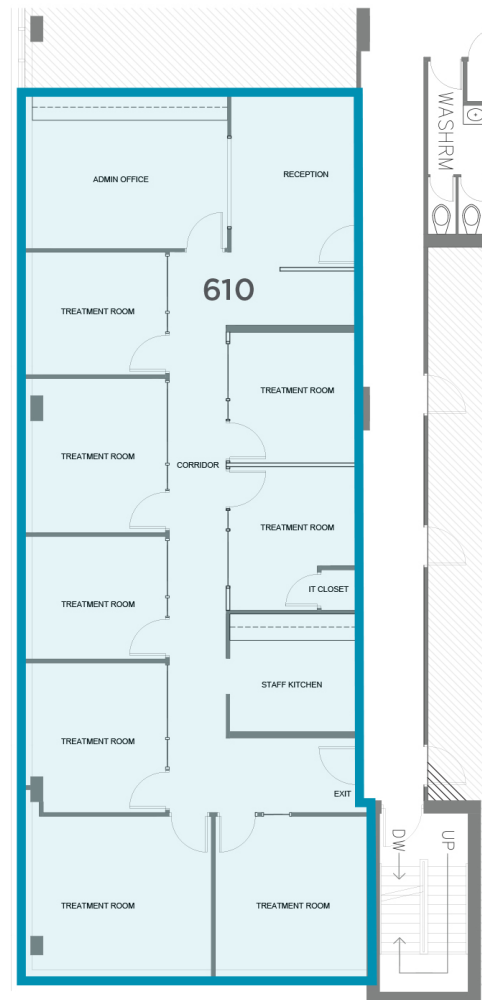
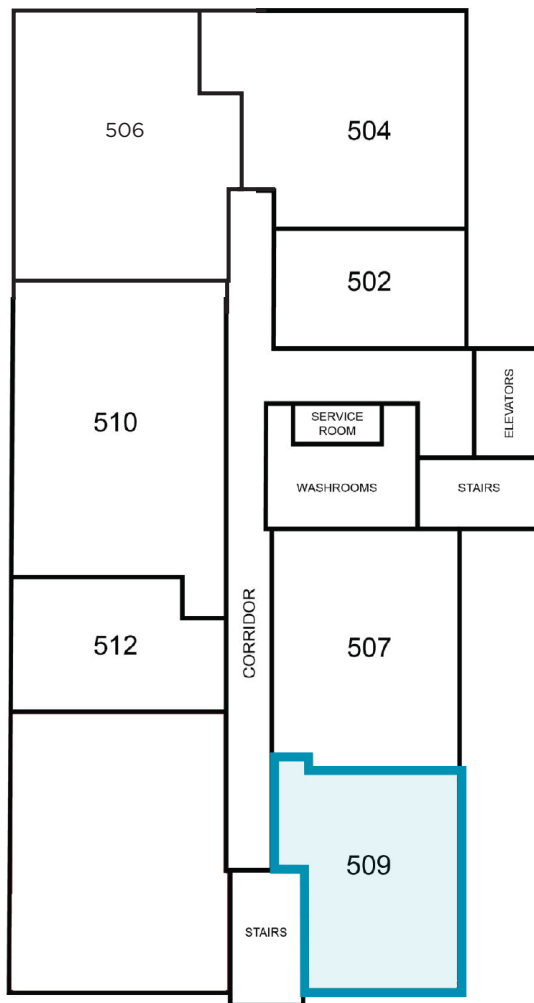
FOR LEASE

WILLOW PROFESSIONAL BUILDING
2525 WILLOW STREET
VANCOUVER, BC



AVAILABLE AREAS

SUITE	AREA	BASE RENT	ADDITIONAL RENT	DETAILS
509	710 SF	\$17.00 PSF	\$23.74 PSF (2024 EST.)	2 offices, kitchenette and open plan
610	2,245 SF	\$17.00 PSF	\$23.74 PSF (2024 EST.)	Available July 1, 2023 - 8 treatment rooms, reception and small kitchen



FOR LEASE

WILLOW PROFESSIONAL BUILDING
2525 WILLOW STREET
VANCOUVER, BC



SUITE 509

