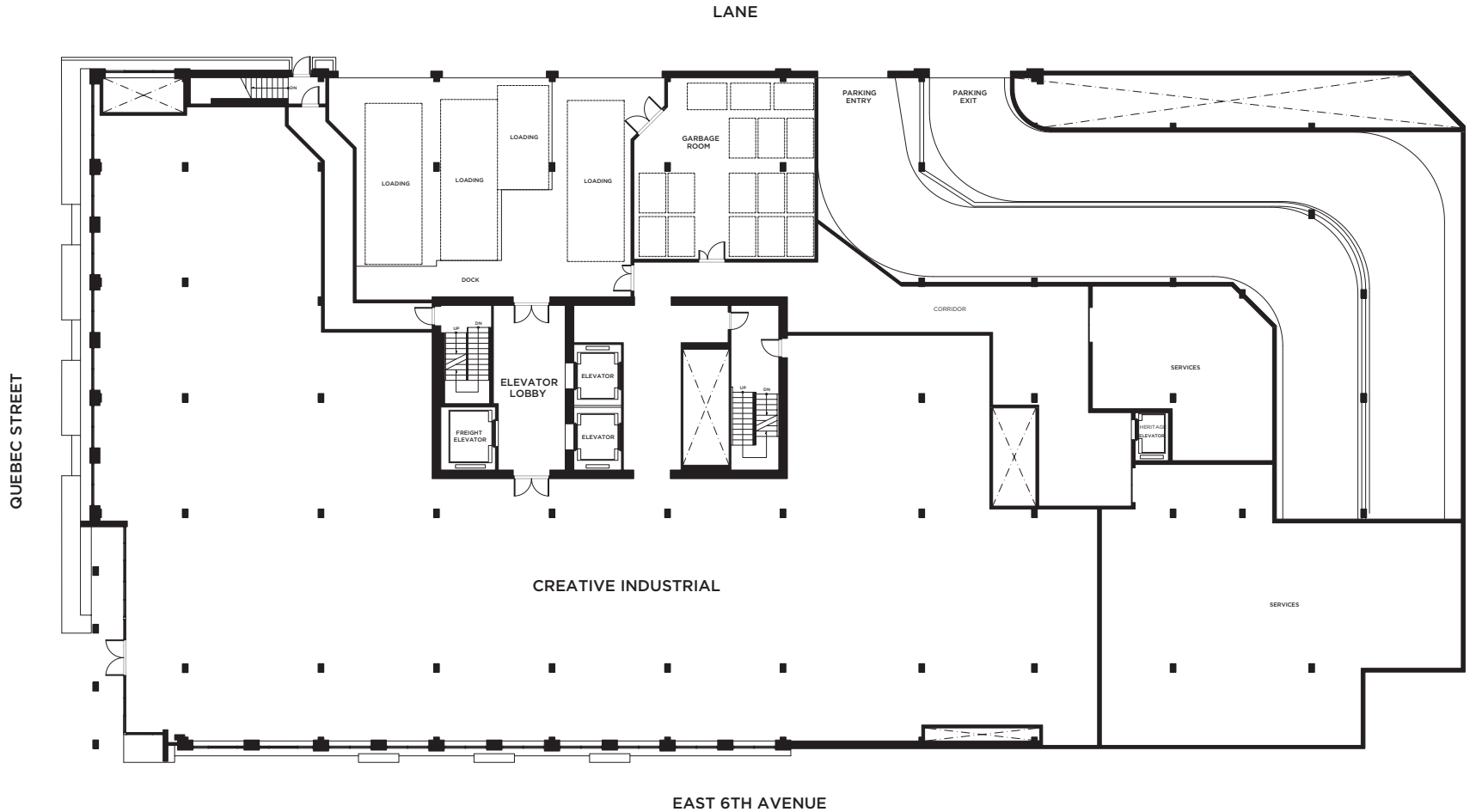


# L1 CREATIVE INDUSTRIAL

# T3



**RENTABLE AREA (BOMA 96):** 13,000 SF  
**FLOOR-TO-FLOOR HEIGHT:** 17'6"

Hines

pcurban

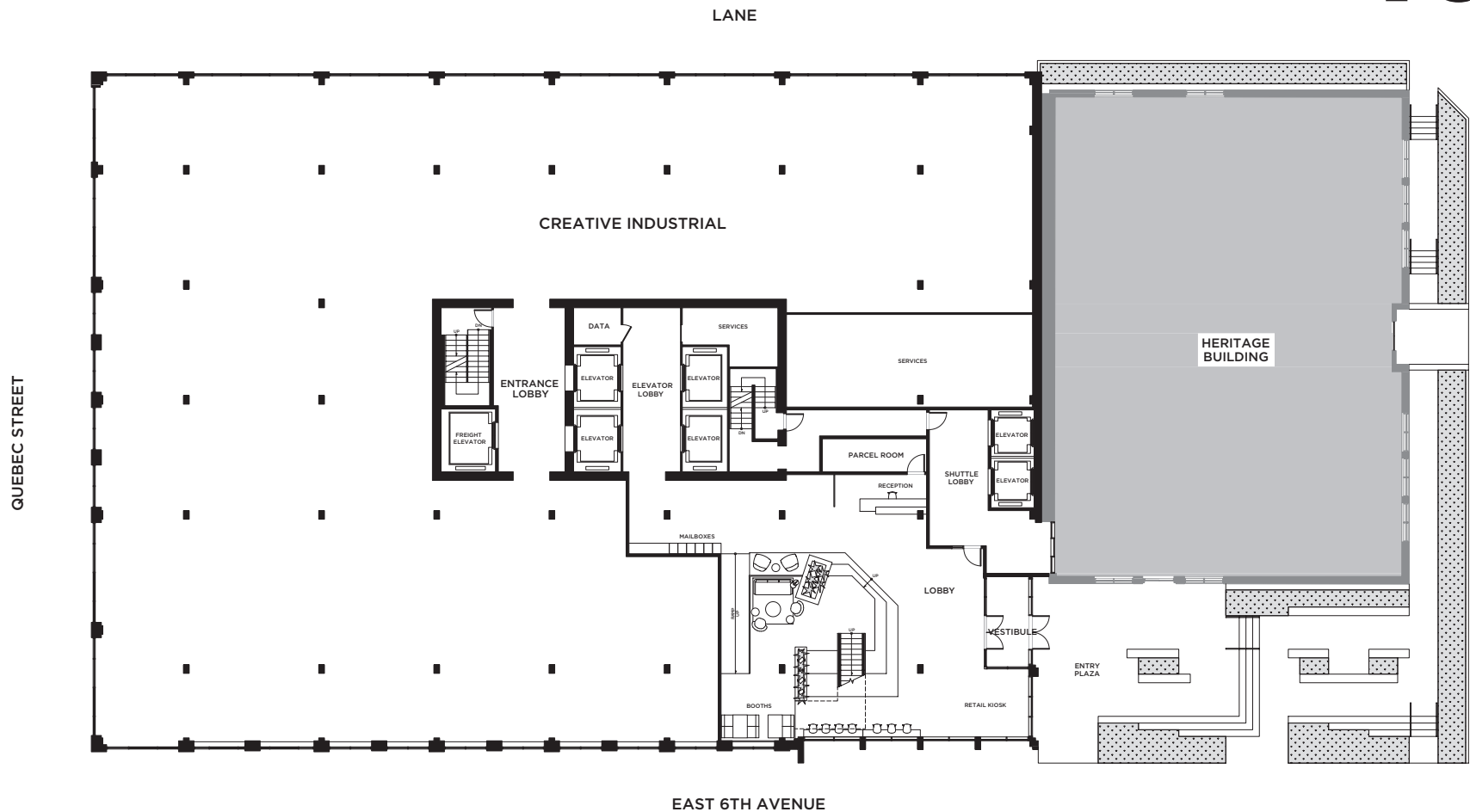
CUSHMAN & WAKEFIELD

123 E 6th Ave LP makes no representation or warranties, express or implied, with respect to the accuracy or completeness of the content, information, graphics, text, links, or other material contained and is not responsible for any errors or omissions in the content.



# L2 CREATIVE INDUSTRIAL

# T3



**RENTABLE AREA (BOMA 96):** 16,200 SF  
**FLOOR-TO-FLOOR HEIGHT:** 12'3"

Hines

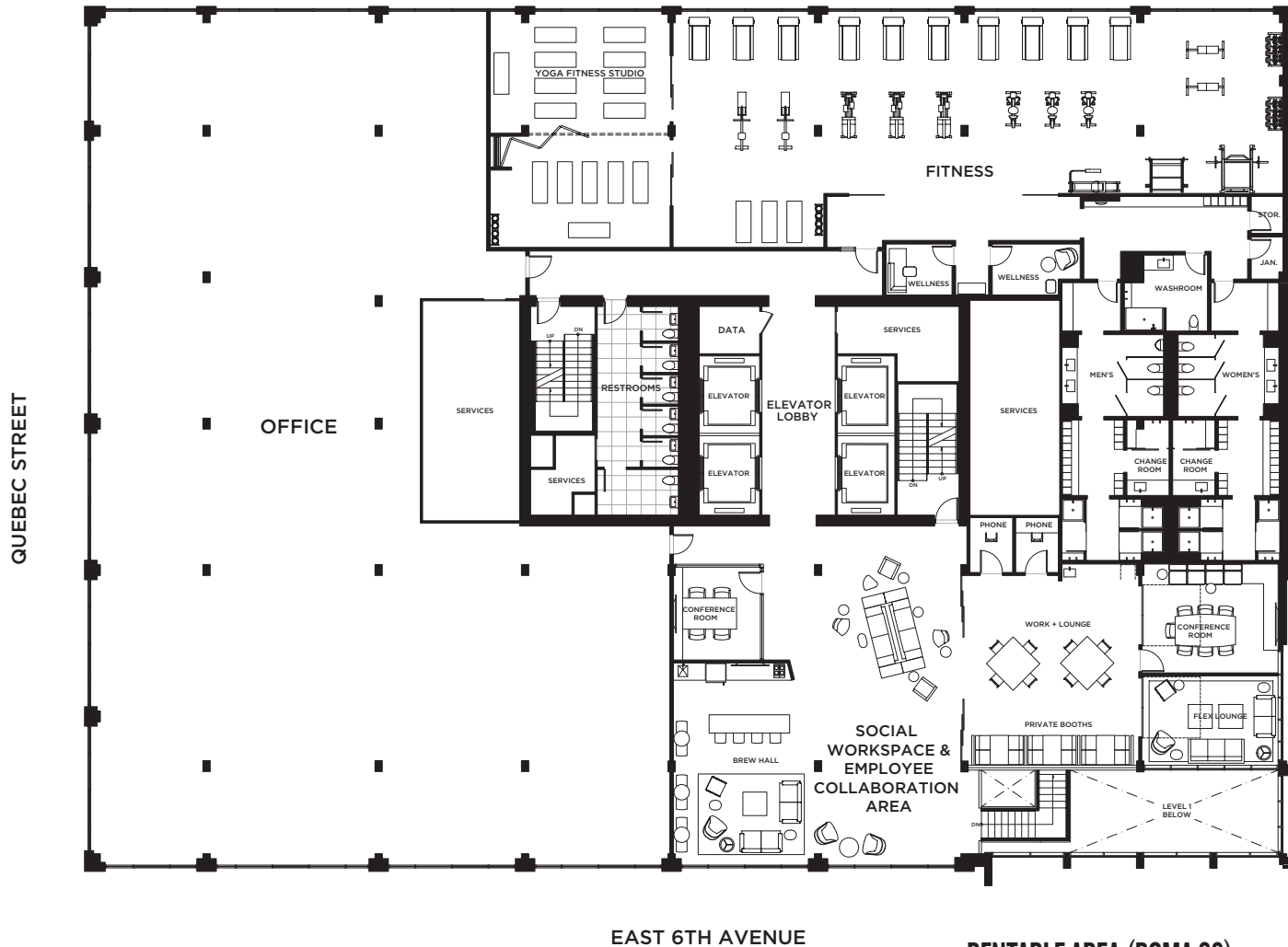
pcurban

CUSHMAN & WAKEFIELD

123 E 6th Ave LP makes no representation or warranties, express or implied, with respect to the accuracy or completeness of the content, information, graphics, text, links, or other material contained and is not responsible for any errors or omissions in the content.



# L3 OFFICE



**RENTABLE AREA (BOMA 96):** 9,200 SF  
**FLOOR-TO-FLOOR HEIGHT:** 12'3"

Hines

pcurban

CUSHMAN & WAKEFIELD

123 E 6th Ave LP makes no representation or warranties, express or implied, with respect to the accuracy or completeness of the content, information, graphics, text, links, or other material contained and is not responsible for any errors or omissions in the content.



# L4-5 OFFICE

# T3



**RENTABLE AREA (BOMA 96):** 20,600 SF  
**FLOOR-TO-FLOOR HEIGHT:** 12'3"

Hines

pcurban

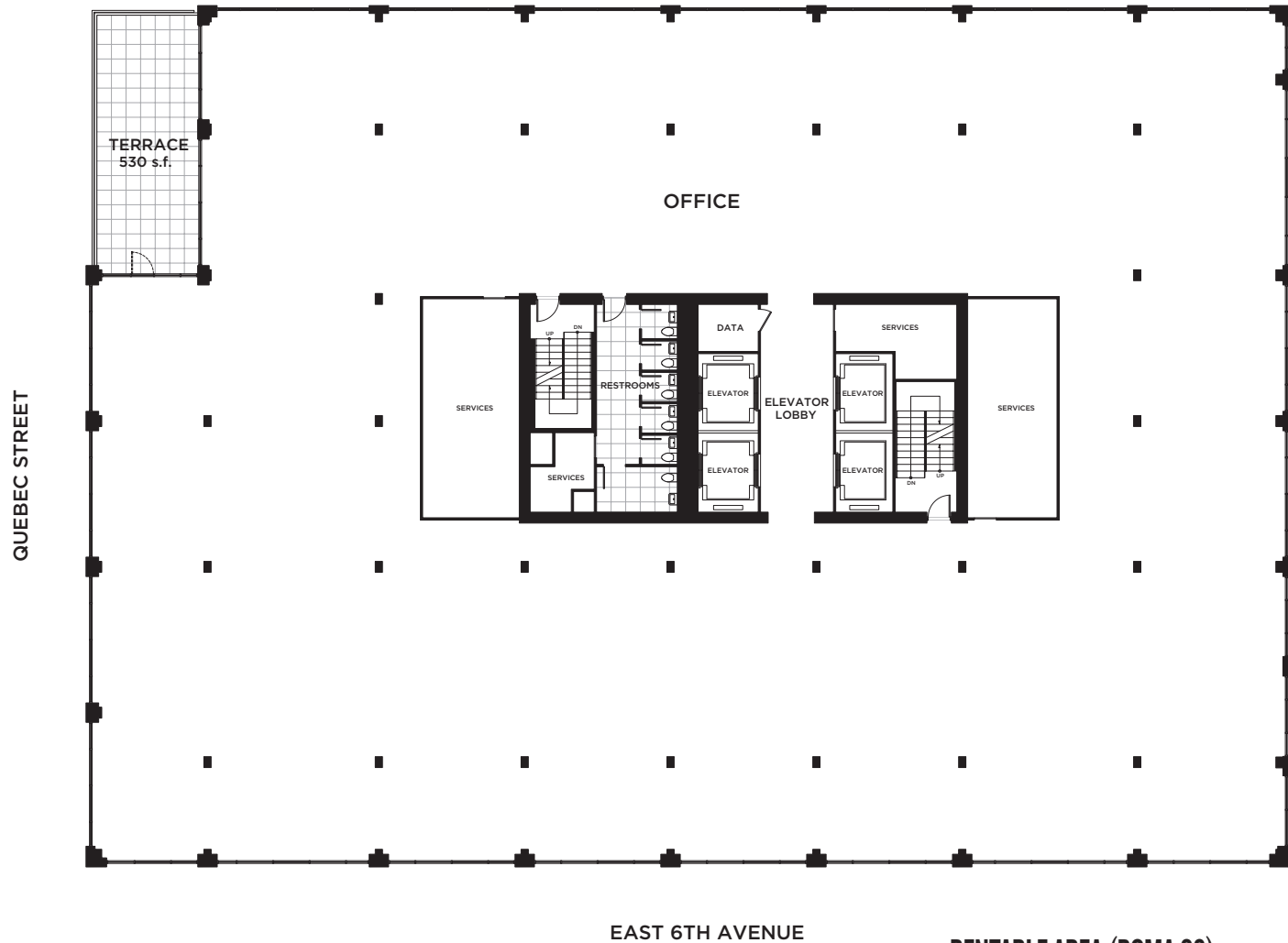
CUSHMAN & WAKEFIELD

123 E 6th Ave LP makes no representation or warranties, express or implied, with respect to the accuracy or completeness of the content, information, graphics, text, links, or other material contained and is not responsible for any errors or omissions in the content.



# L6 OFFICE

# T3



**RENTABLE AREA (BOMA 96):** 19,900 SF  
**FLOOR-TO-FLOOR HEIGHT:** 12'3"

Hines

pcurban

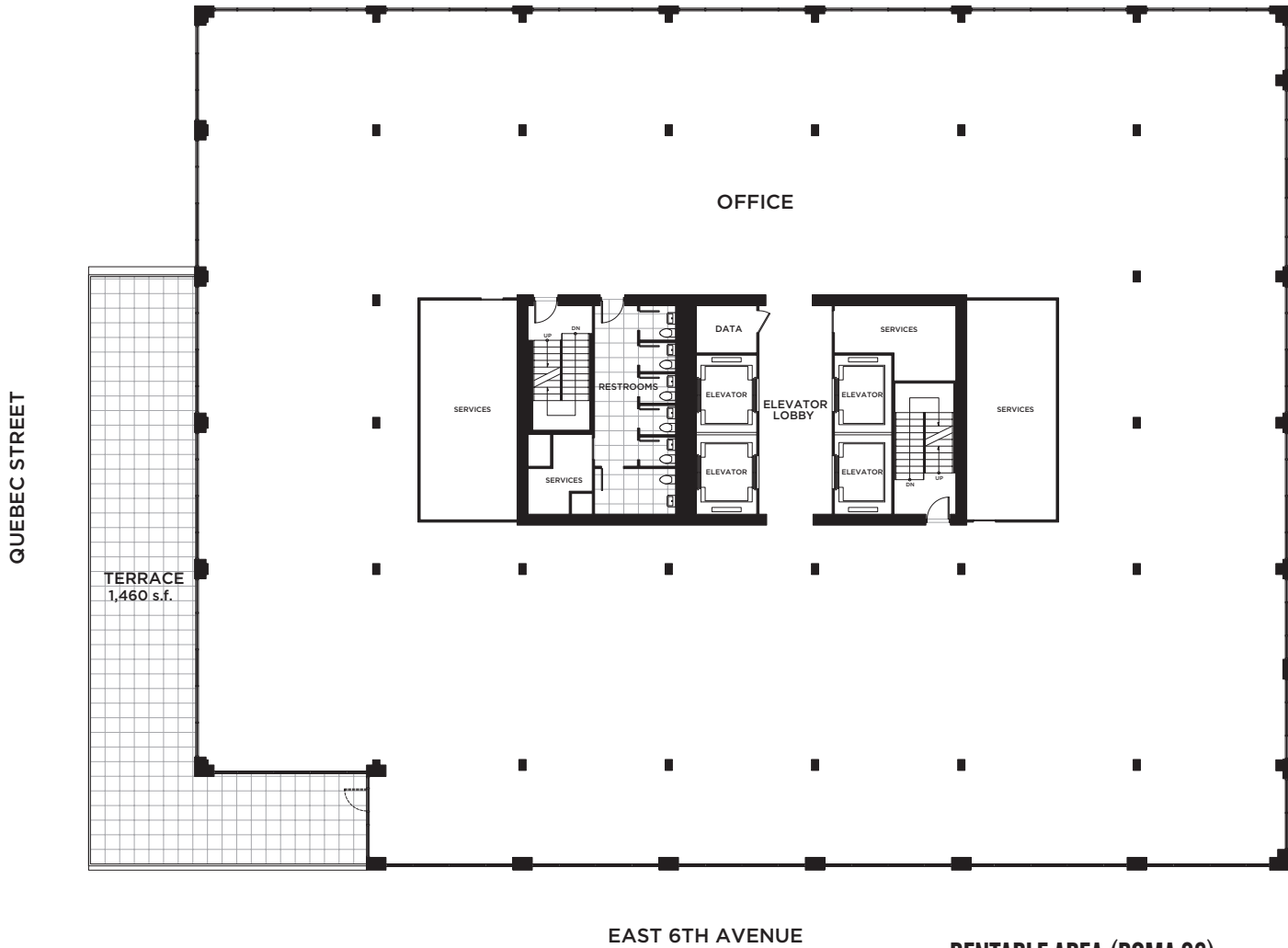
CUSHMAN & WAKEFIELD

123 E 6th Ave LP makes no representation or warranties, express or implied, with respect to the accuracy or completeness of the content, information, graphics, text, links, or other material contained and is not responsible for any errors or omissions in the content.



# L7 OFFICE

# T3



**RENTABLE AREA (BOMA 96):** 18,300 SF  
**FLOOR-TO-FLOOR HEIGHT:** 12'3"

Hines

pcurban

CUSHMAN &  
WAKEFIELD

123 E 6th Ave LP makes no representation or warranties, express or implied, with respect to the accuracy or completeness of the content, information, graphics, text, links, or other material contained and is not responsible for any errors or omissions in the content.



# L8 OFFICE

# T3



**RENTABLE AREA (BOMA 96):** 16,400 SF  
**FLOOR-TO-FLOOR HEIGHT:** 12'3"

Hines

pcurban

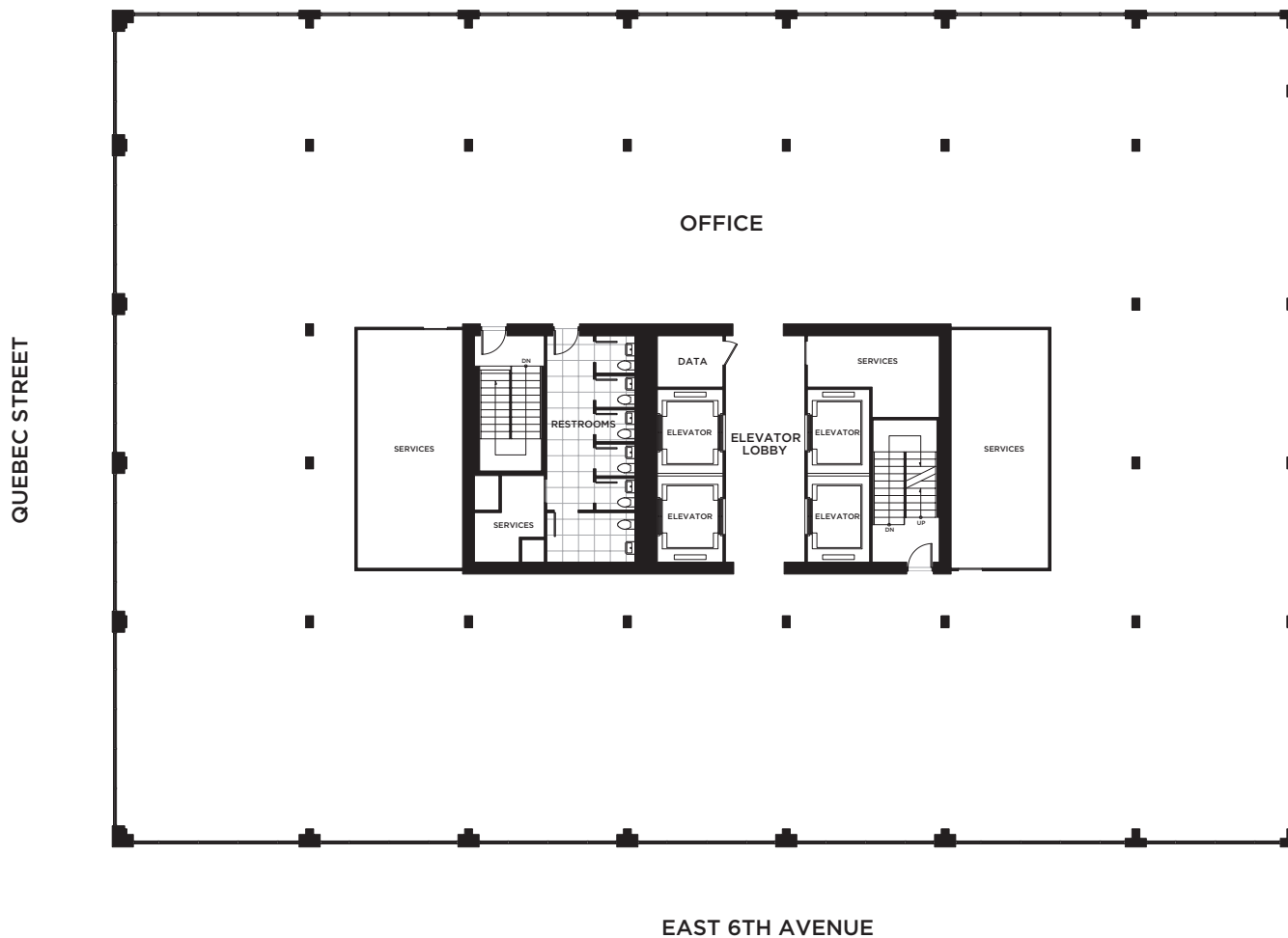
CUSHMAN & WAKEFIELD

123 E 6th Ave LP makes no representation or warranties, express or implied, with respect to the accuracy or completeness of the content, information, graphics, text, links, or other material contained and is not responsible for any errors or omissions in the content.



# L9-10 OFFICE

# T3



**RENTABLE AREA (BOMA 96):** 16,400 SF  
**FLOOR-TO-FLOOR HEIGHT:** 12'3"

Hines

pcurban

CUSHMAN & WAKEFIELD

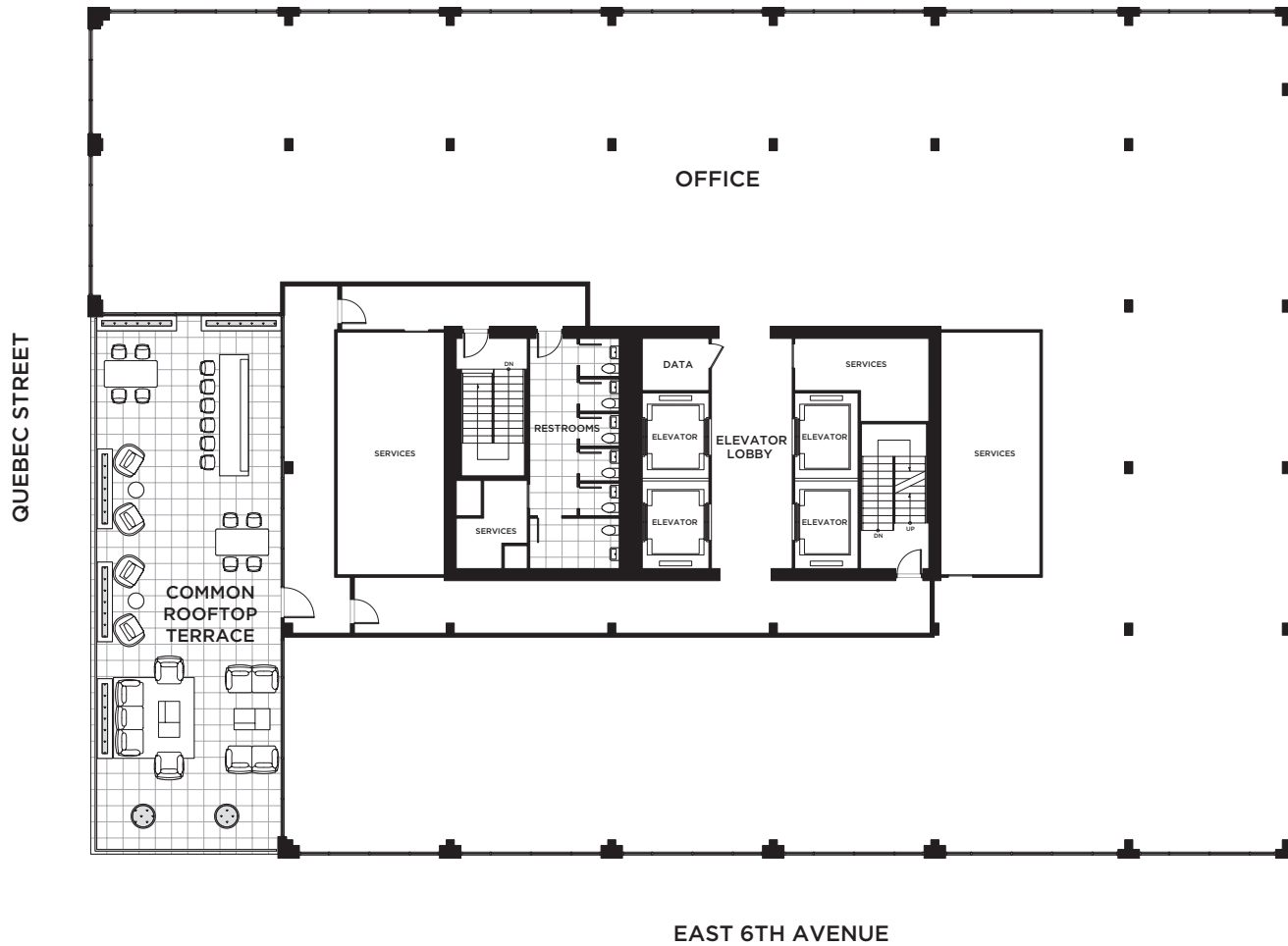
123 E 6th Ave LP makes no representation or warranties, express or implied, with respect to the accuracy or completeness of the content, information, graphics, text, links, or other material contained and is not responsible for any errors or omissions in the content.

 NORTH



# L11 DOUBLE HEIGHT OFFICE

# T3



**RENTABLE AREA (BOMA 96):**  
**FLOOR-TO-FLOOR HEIGHT:**

17,500 SF (including mezz)  
25'0"

Hines

pcurban

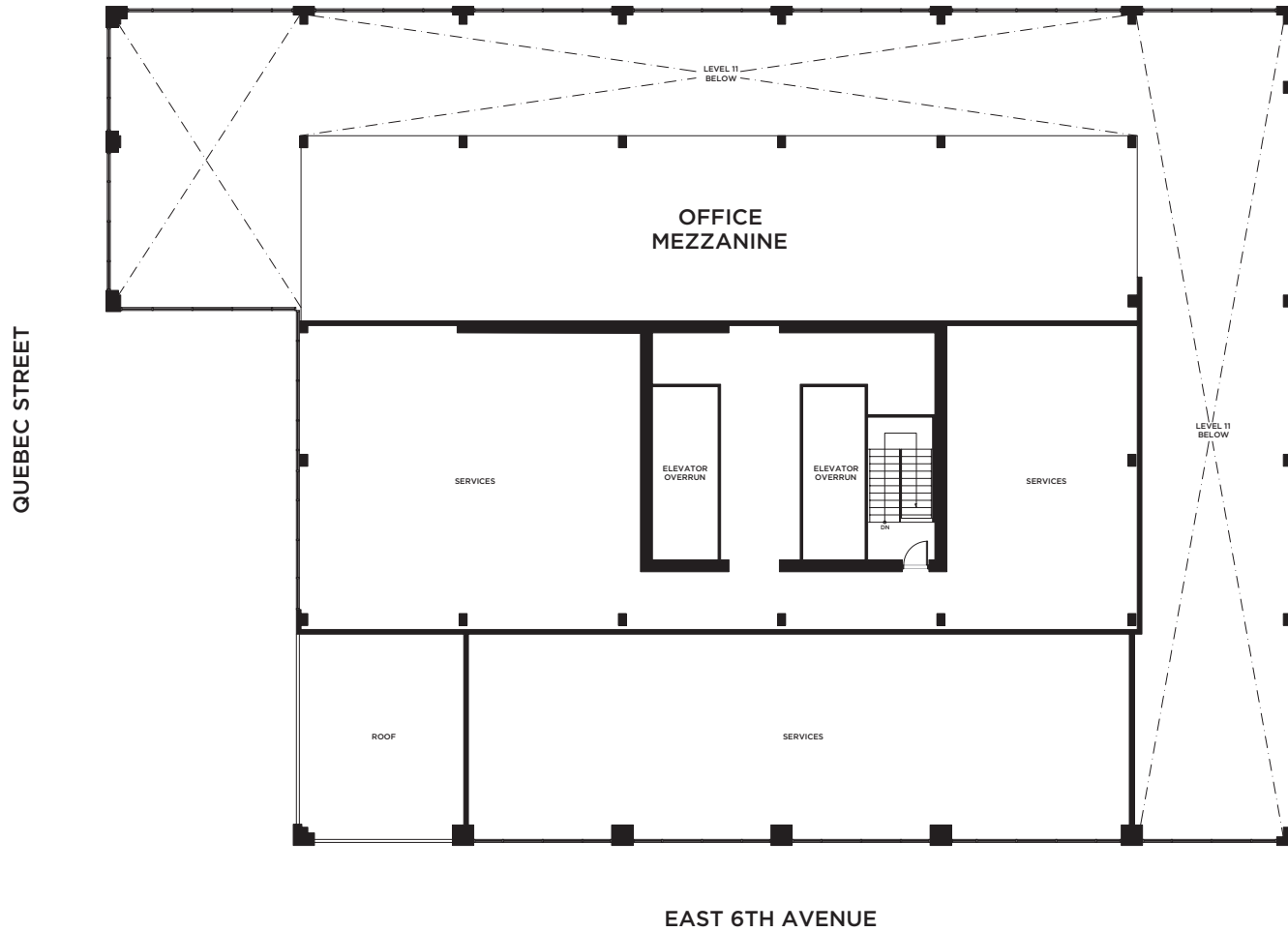
CUSHMAN & WAKEFIELD

123 E 6th Ave LP makes no representation or warranties, express or implied, with respect to the accuracy or completeness of the content, information, graphics, text, links, or other material contained and is not responsible for any errors or omissions in the content.

 NORTH

# MEZZANINE

# T3



**RENTABLE AREA (BOMA 96):** 2,800 SF  
**FLOOR-TO-FLOOR HEIGHT:** 13'6"

Hines

pcurban

CUSHMAN & WAKEFIELD

123 E 6th Ave LP makes no representation or warranties, express or implied, with respect to the accuracy or completeness of the content, information, graphics, text, links, or other material contained and is not responsible for any errors or omissions in the content.

