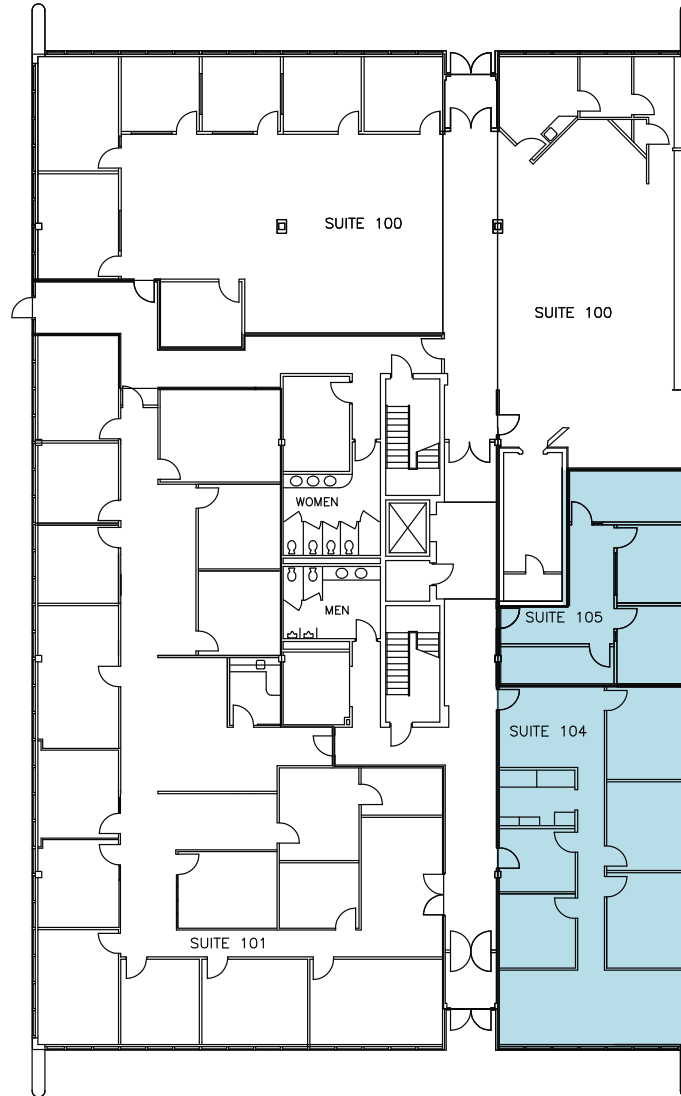


# 620 GREEN VALLEY RD

GREENSBORO, NC 27408

## GREEN VALLEY OFFICE PARK 1ST FLOOR AVAILABILITY



SUITE 104/105	2,536 +/- RSF Available
---------------	-------------------------

**Kevin Kemp, SIOR**  
Senior Director  
+1 336 812 3307  
[kevin.kemp@cushwake.com](mailto:kevin.kemp@cushwake.com)

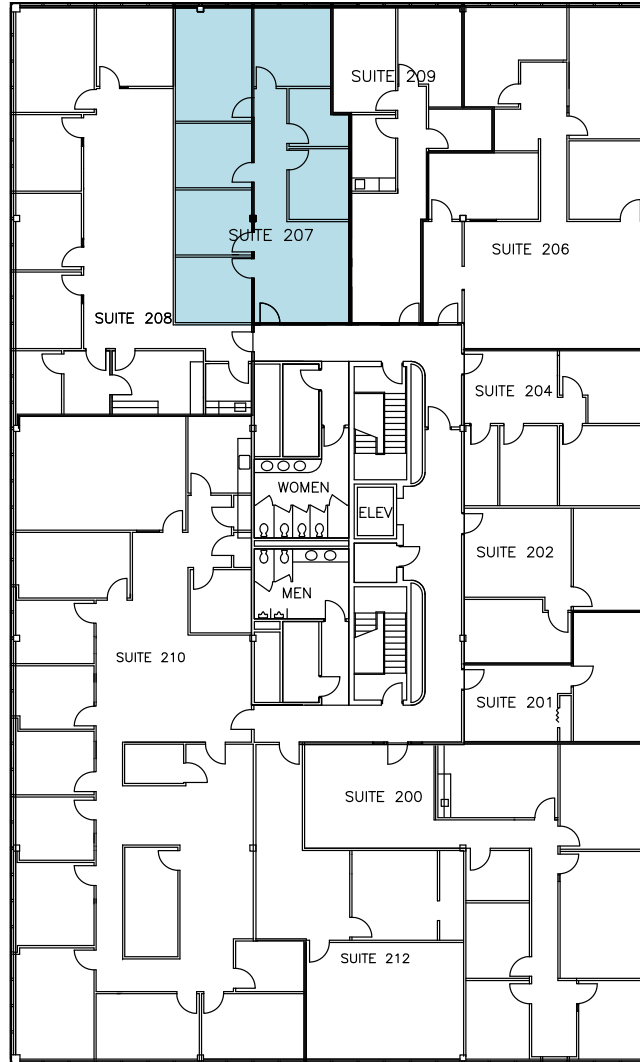
**Raffi Simel, SIOR**  
Senior Associate  
+1 336 289 2541  
[raffi.simel@cushwake.com](mailto:raffi.simel@cushwake.com)

628 Green Valley Road, Ste. 202  
Greensboro, NC 27408  
Main +1 336 668 9999  
[cushmanwakefield.com](http://cushmanwakefield.com)

# 620 GREEN VALLEY RD

GREENSBORO, NC 27408

## GREEN VALLEY OFFICE PARK 2ND FLOOR AVAILABILITY



SUITE 207	1,472 +/- RSF Available
-----------	-------------------------

**Kevin Kemp, SIOR**  
Senior Director  
+1 336 812 3307  
[kevin.kemp@cushwake.com](mailto:kevin.kemp@cushwake.com)

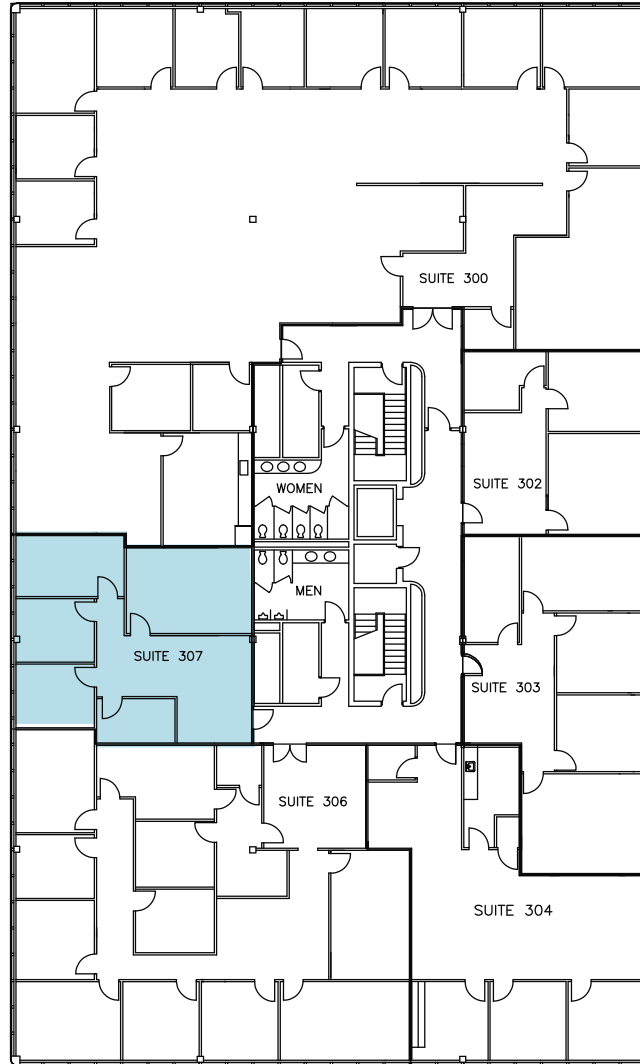
**Raffi Simel, SIOR**  
Senior Associate  
+1 336 289 2541  
[raffi.simel@cushwake.com](mailto:raffi.simel@cushwake.com)

628 Green Valley Road, Ste. 202  
Greensboro, NC 27408  
Main +1 336 668 9999  
[cushmanwakefield.com](http://cushmanwakefield.com)

# 620 GREEN VALLEY RD

GREENSBORO, NC 27408

## GREEN VALLEY OFFICE PARK 3RD FLOOR AVAILABILITY



<b>SUITE 307</b>	1,246 +/- RSF Available
------------------	-------------------------

**Kevin Kemp, SIOR**  
Senior Director  
+1 336 812 3307  
[kevin.kemp@cushwake.com](mailto:kevin.kemp@cushwake.com)

**Raffi Simel, SIOR**  
Senior Associate  
+1 336 289 2541  
[raffi.simel@cushwake.com](mailto:raffi.simel@cushwake.com)

628 Green Valley Road, Ste. 202  
Greensboro, NC 27408  
Main +1 336 668 9999  
[cushmanwakefield.com](http://cushmanwakefield.com)