



ONE CENTRAL ISLAND PLAZA

**115** **CENTRAL  
ISLAND ST.**

Daniel Island, SC





# 1 CENTRAL ISLAND PLAZA

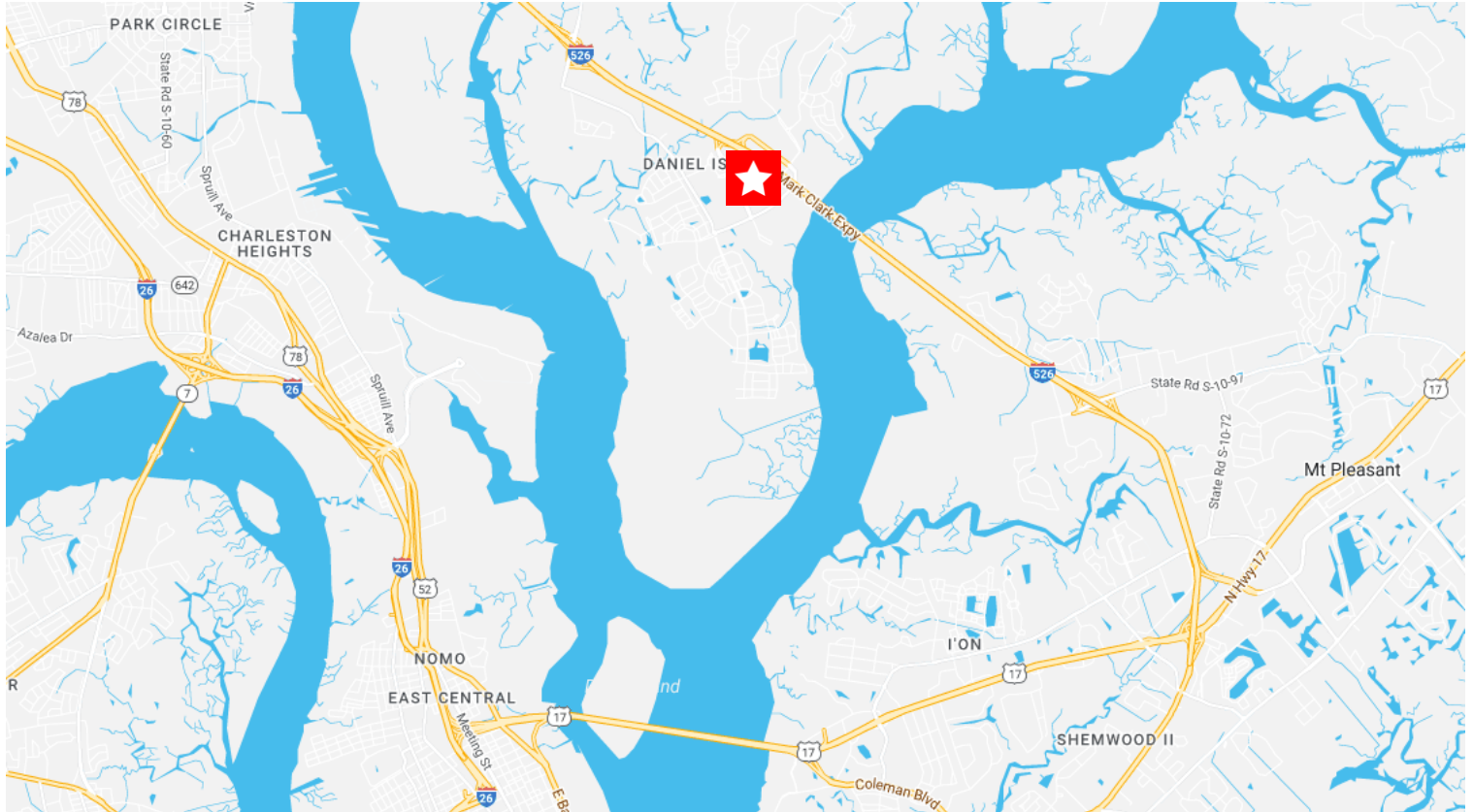
is a premier, Class A office property on Daniel Island. Located directly off I-526 and in the heart of Daniel Island's Town Center, 1 Central Island Plaza is only a few steps away from numerous restaurants, fitness centers and several outdoor gathering areas. The available spaces are well suited for any company looking for plug n' play space in an amazing location on Daniel Island.

Daniel Island is easily accessible from I-526 making it a great location for tenants currently located in Mount Pleasant or North Charleston who want their employees to have an abundance of nearby amenities.



CLASS A OFFICE FOR LEASE

# One Central Island Plaza



## Property Highlights:

**1** 2,370 – 35,806 RSF Available

**2** Move-in Ready

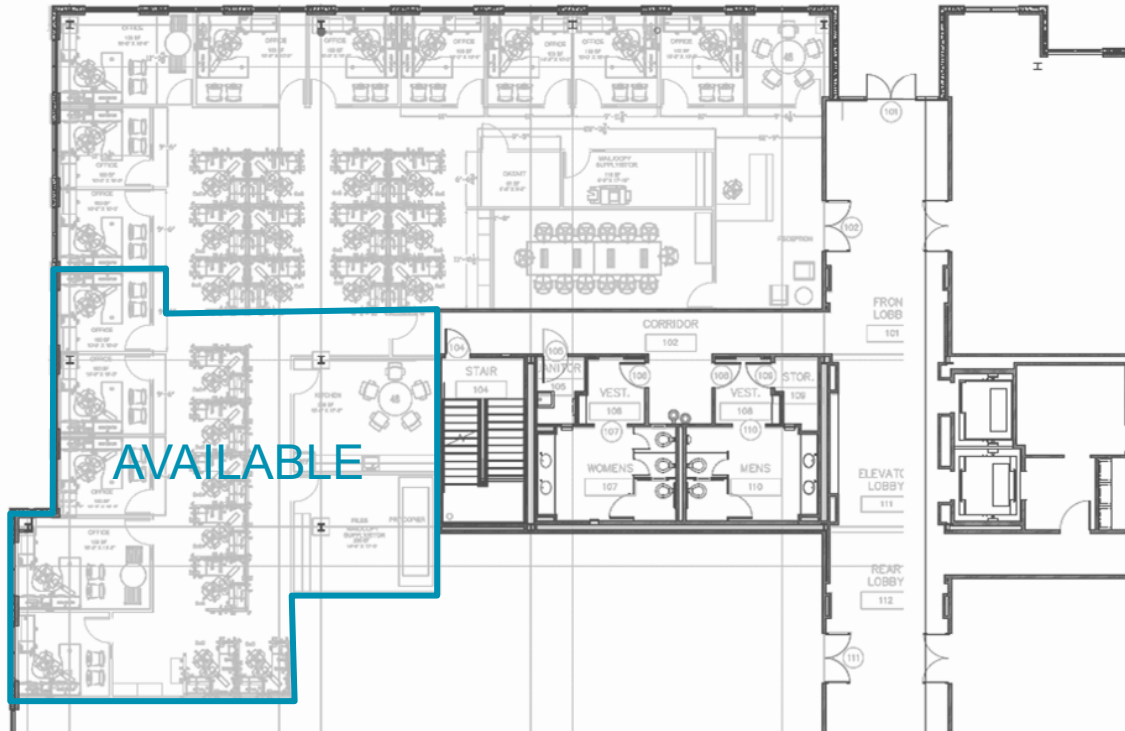
**3** Free Surface Parking

**4** Walking distance from numerous restaurants and high-end retail

**5** Private Shower



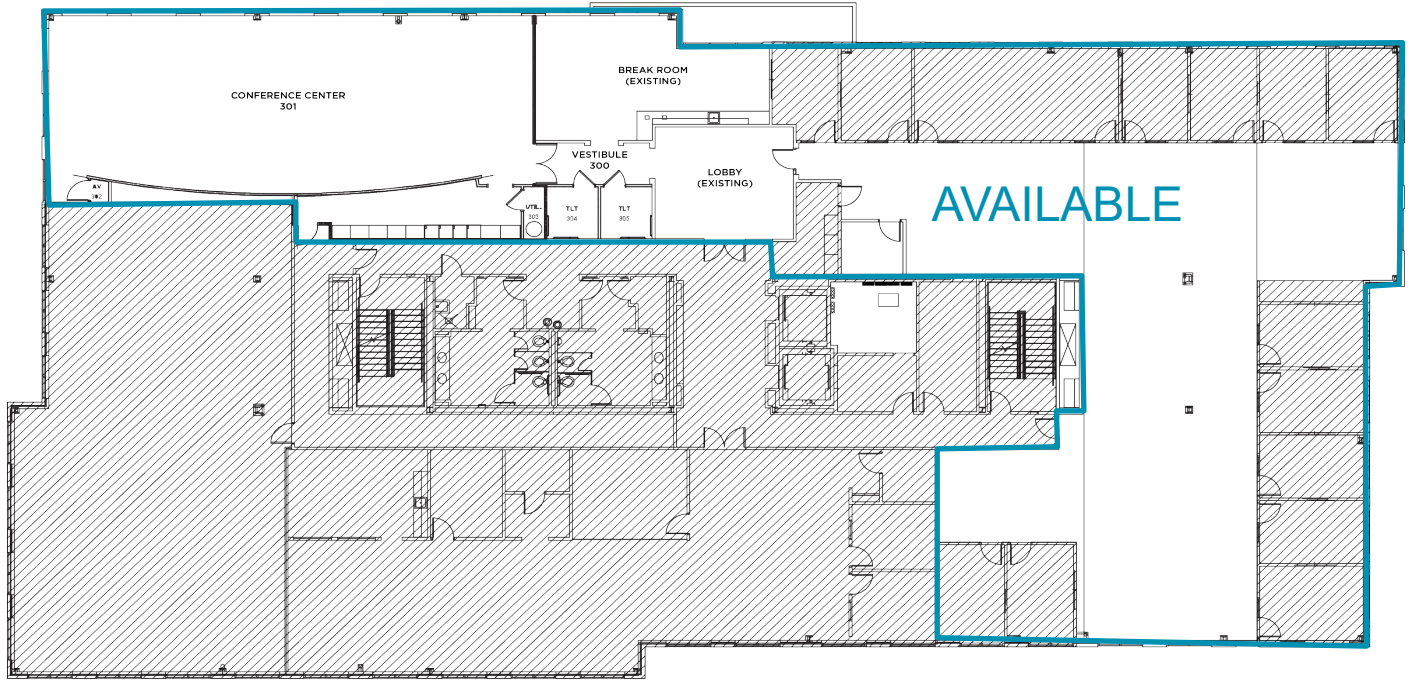
## SUITE 101 | 2,370 RSF AVAILABLE



## SUITE 250 | 3,696 RSF AVAILABLE

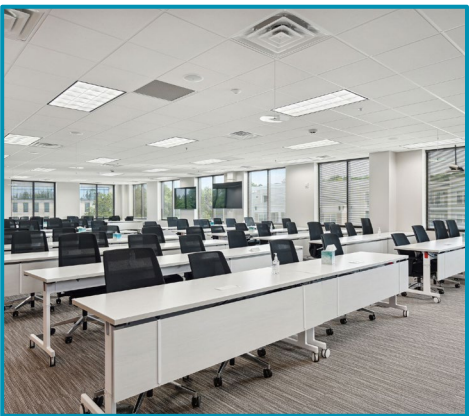


# SUITE 300 | 11,101 RSF AVAILABLE



# SUITE 400 | 18,639 RSF AVAILABLE







**For more information, contact:**

**NICK TANANA**

Senior Director  
+1 843 724 0109  
nick.tanana@cushwake.com

**BRADY DASHIELL**

Senior Associate  
+1 843 724 0106  
brady.dashiell@cushwake.com

1 Central Island Plaza  
115 Central Island Street, Suite 175  
Charleston, SC 29492

[www.cushmanwakefield.com](http://www.cushmanwakefield.com)

