



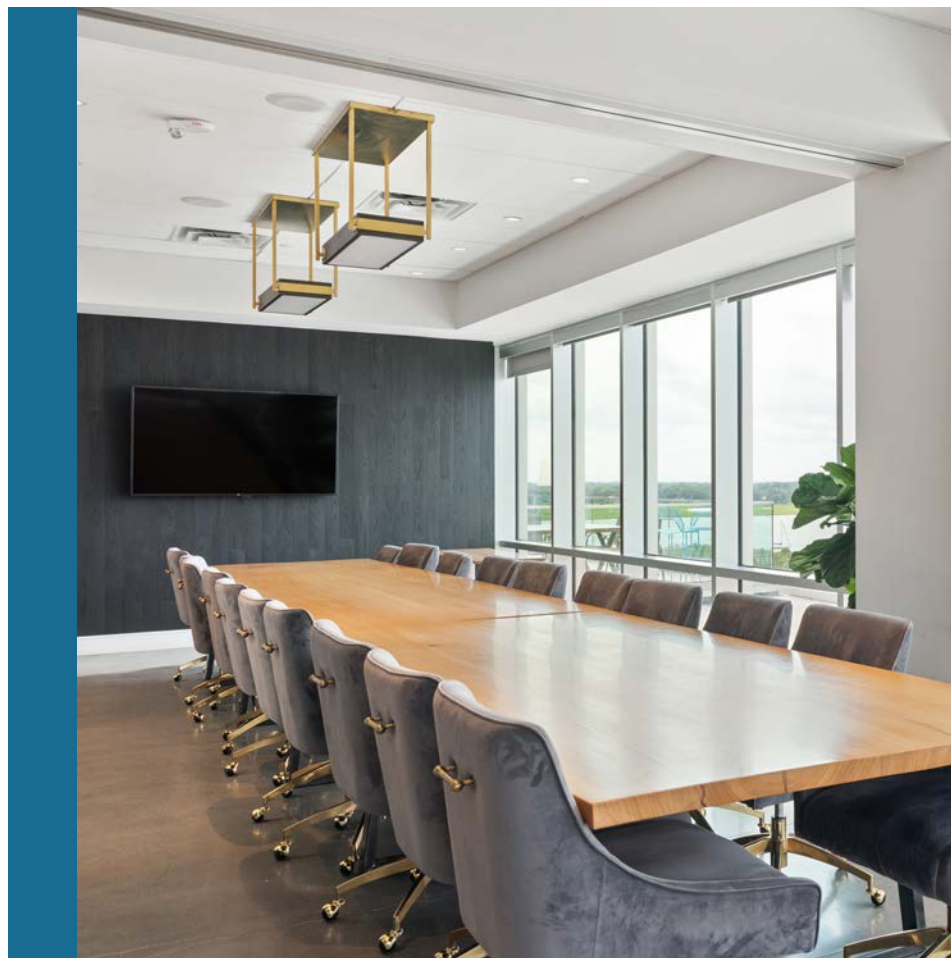
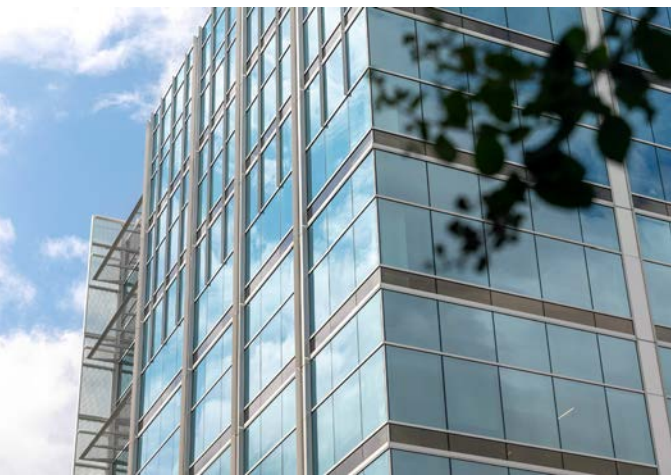
22WESTEDGE 

156,000 SF STATE-OF-THE-ART CLASS-A OFFICE BUILDING

AMAZING VIEWS AND WALKABLE AMENITIES

4,013 UP TO 36,589 SF AVAILABLE







MT.
PLEASANT

KING
STREET

COLLEGE OF
CHARLESTON

THE BATTERY/HISTORIC
CHARLESTON

US HIGHWAY 17

10 WESTEDGE
(PUBLIX)

MUSC

22WESTEDGE 

WESTEDGE
STREET

LOCKWOOD
DRIVE





WESTEDGE

A NEW WAY TO LIVE,
WORK & SHOP IN
CHARLESTON

Office: 156,000 SF of Class-A
Office/Lab Space

Hospitality: 2 Hotels with +/- 500 Rooms

Retail: 100,000 SF of Prime Retail

Living: 600 Multifamily Units



PHASED MASTER PLAN

- 1 Holiday Inn Express
- 2 10 WestEdge Apartments
- 3 22 WestEdge and Studio 22
- 4 Marriott Hotel
- 5 99 WestEdge – The Caroline Apartments
- 6 College of Charleston
- 7 City of Charleston
- 8 Harborview Hotel
- 9 77 WestEdge Apartments
- 10 Hotel
- 11 Future Office

- 12 Future Condominium, Parking, and Retail
- 13 Future Apartments and Parking
- 14 Hotel
- 15 Future Hagood Connection
- 16 Future Apartments and Parking
- 17 Future Office
- 18 Future Apartments and Parking
- 19 Future Office
- 20 Future Office

- 21 Joe Riley Park
- 22 Brittlebank Park
- 23 Bristol Condominium
- 24 McDonald's
- 25 Stoney Field
- 26 Future Hagood Basin
- 27 MUSC Parking
- 28 MUSC
- 29 VA Hospital
- 30 Bee Street Condominiums
- 31 Ashley River

● EXISTING

● DELIVERING 2024

● FUTURE

● NON-WESTEDGE LANDMARKS

AVAILABLE

Suite 600
21,158 RSF
Exp. 11/30/22

AVAILABLE

Suite 500
5,559 RSF

TENANTS



HARBOUR CLUB
AT WESTEDGE



MUSC
Medical University
of South Carolina



VIKORSCIENTIFIC

STUDIO 22

AVAILABLE

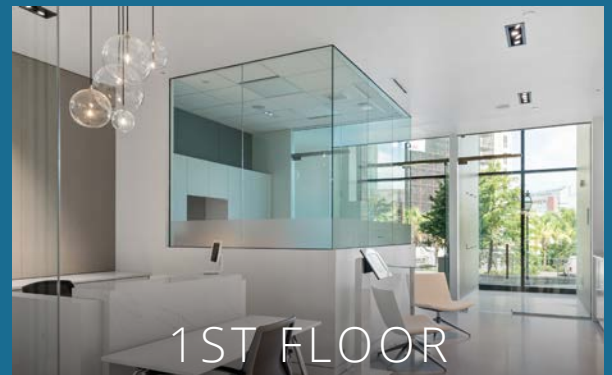
Suite 104/105
5,859 RSF

AVAILABLE

Suite 106
4,013 RSF



5TH & 6TH FLOORS
Spectacular Views



1ST FLOOR



Retail/Office/Medical

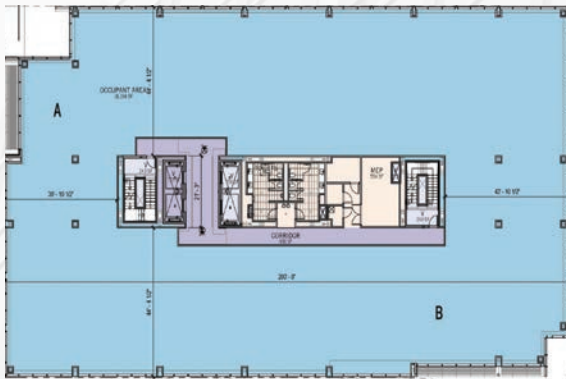
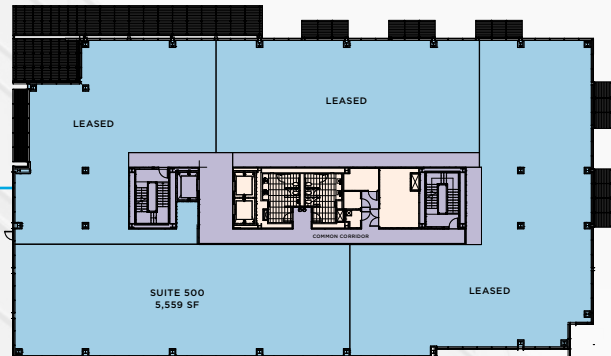
AVAILABILITIES

5TH FLOOR

Office and/or Life Science Opportunity

Suite 500

5,559 RSF



6TH FLOOR

Office and/or Life Science Opportunity

Suite 600

21,158 RSF

1ST FLOOR

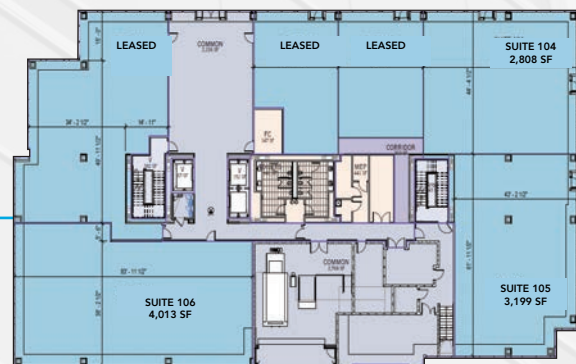
Retail/Office/Medical Opportunity

Suites 104/105

5,859 RSF

Suite 106

4,013 RSF



4TH FLOOR

Move-In Ready Co-Working & Executive Space Available

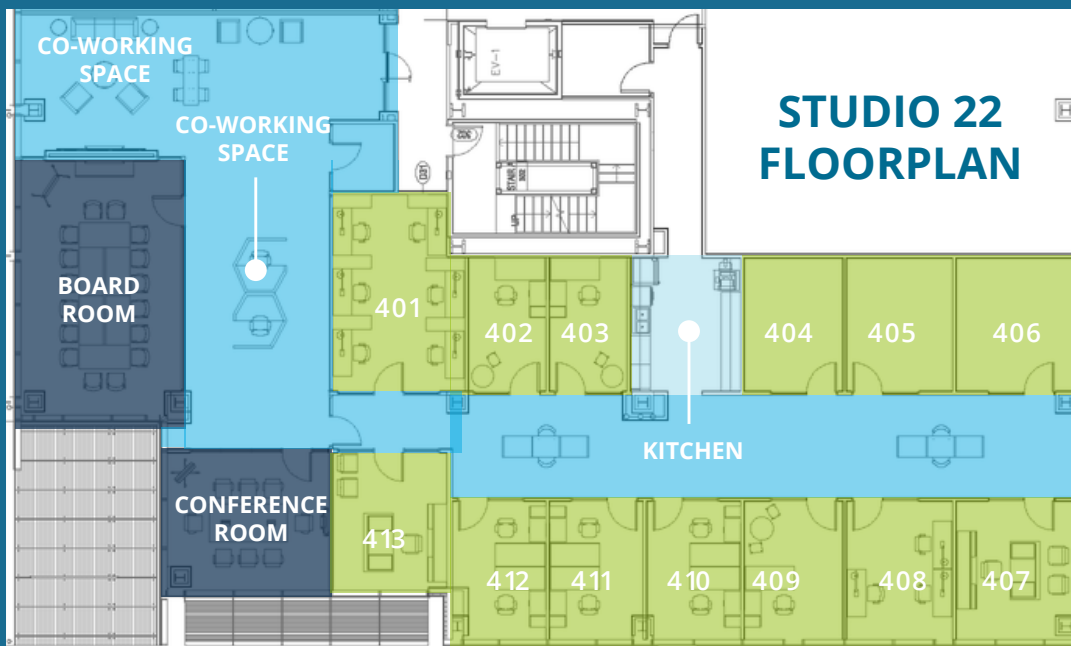
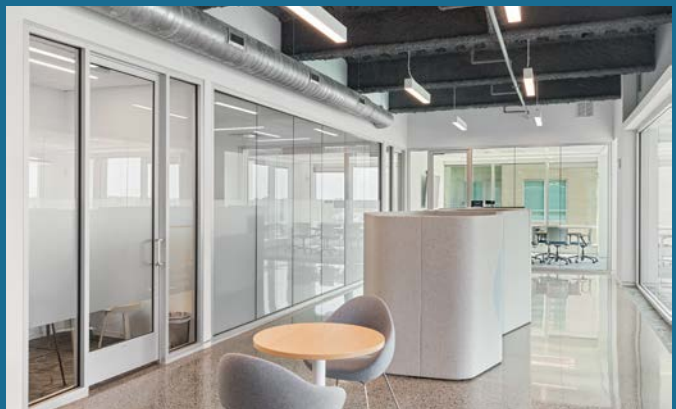
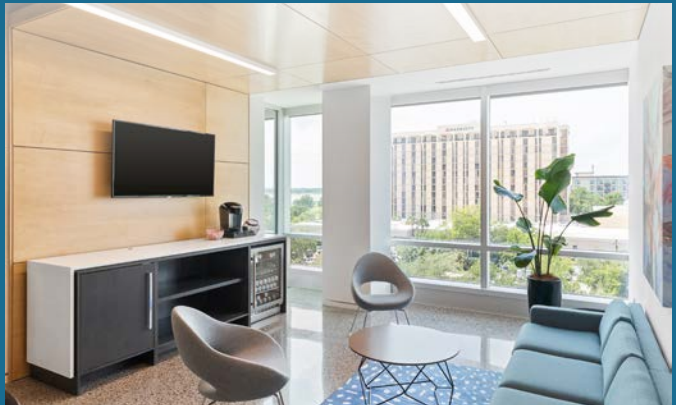


ON-SITE AMENITIES & RETAIL



PROFESSIONAL PRIVATE OFFICES, CO-WORKING AND MEETING SPACES

- Private offices
- Private cubicle desks/ shared workspace
- Board and conference/training rooms
- Common lounge with TV
- Open table working area
- 24/7 access
- High Speed Internet
- Catering or Dining Options Available From The Harbour Club and Saveurs Du Monde
- Kitchen with community fridge, free coffee, snacks, and local Charleston beer on tap
- Walkable access to food, fitness, Joe Riley Stadium and Brittlebank Park
- Networking and educational events
- Adjacent to MUSC



For additional information, please contact Jennifer at jmurphy@atlantic-cos.com.



HARBOUR CLUB AT WESTEDGE

Located on the 7th floor, the Harbour Club is the premier spot for all social and business needs.

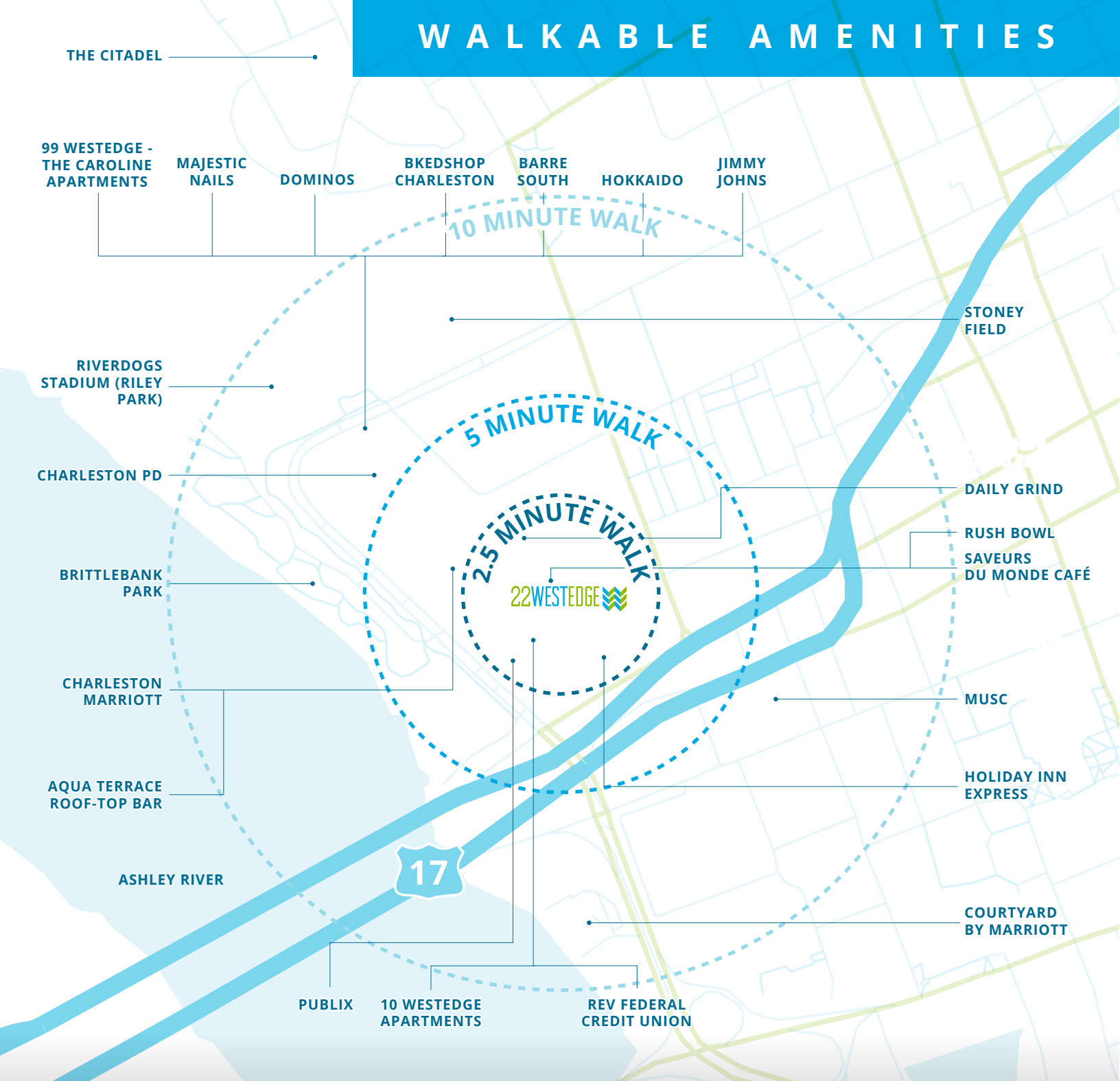


Publix

Immediately adjacent to 22 WestEdge is a 55,000 SF Publix Grocery store.



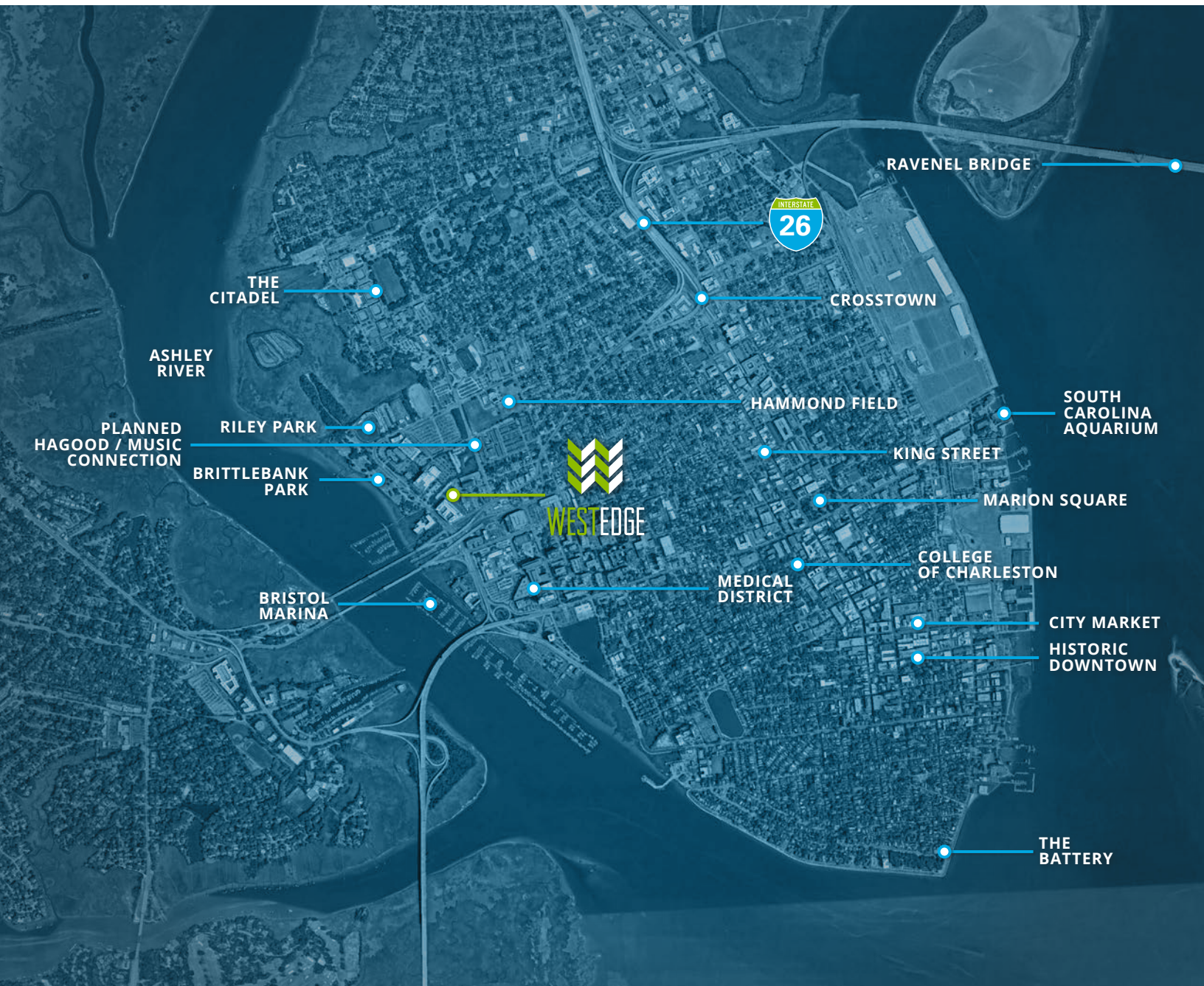
WALKABLE AMENITIES



WESTEDGECHARLESTON.COM

CHARLESTON'S NEWEST URBAN DESTINATION

- **30+** new people move to the region each day
- **20th** in the U.S. for advanced industries
- **Civilian labor force** grew 3x faster than the U.S. average from 2010-2021



22WESTEDGE

CLASS-A OFFICE/LIFE SCIENCE SPACE AVAILABLE

Charleston, South Carolina | For more information, please contact:

NICK TANANA

Senior Director

843 724 0109

nick.tanana@cushwake.com

BRADY DASHIELL

Senior Associate

843 724 0106

brady.dashiell@cushwake.com



©2022 Cushman & Wakefield. All rights reserved. The information contained in this communication is strictly confidential. This information has been obtained from sources believed to be reliable but has not been verified. NO WARRANTY OR REPRESENTATION, EXPRESS OR IMPLIED, IS MADE AS TO THE CONDITION OF THE PROPERTY (OR PROPERTIES) REFERENCED HEREIN OR AS TO THE ACCURACY OR COMPLETENESS OF THE INFORMATION CONTAINED HEREIN, AND SAME IS SUBMITTED SUBJECT TO ERRORS, OMISSIONS, CHANGE OF PRICE, RENTAL OR OTHER CONDITIONS, WITHDRAWAL WITHOUT NOTICE, AND TO ANY SPECIAL LISTING CONDITIONS IMPOSED BY THE PROPERTY OWNER(S). ANY PROJECTIONS, OPINIONS OR ESTIMATES ARE SUBJECT TO UNCERTAINTY AND DO NOT SIGNIFY CURRENT OR FUTURE PROPERTY PERFORMANCE.