

12,000-64,000 SF CREATIVE OFFICE CONVERSION **FOR LEASE**

STARRING:  
**Roxie Theatre**  
.....  
**Cameo Theatre**  
.....  
**Arcade Theatre**



CONTIGUOUS TO +/-64,000 SF CREATIVE CAMPUS **ALONG HISTORIC BROADWAY**

..... MAY BE LEASED ALONE OR IN CONJUNCTION .....

**Contiguous**..... +/-64,000 SF  
**Asking Rate**..... Negotiable  
**Available**..... Now  
**Term** ..... Negotiable  
**Parking**..... Available

**Cameo Theatre**  
**526 S BROADWAY**  
 12,060 USF



**Roxie Theatre**  
**516 S BROADWAY**  
 18,324 USF



**Arcade Theatre**  
**532 S BROADWAY**  
 33,106 USF



**Possible Uses Include:**

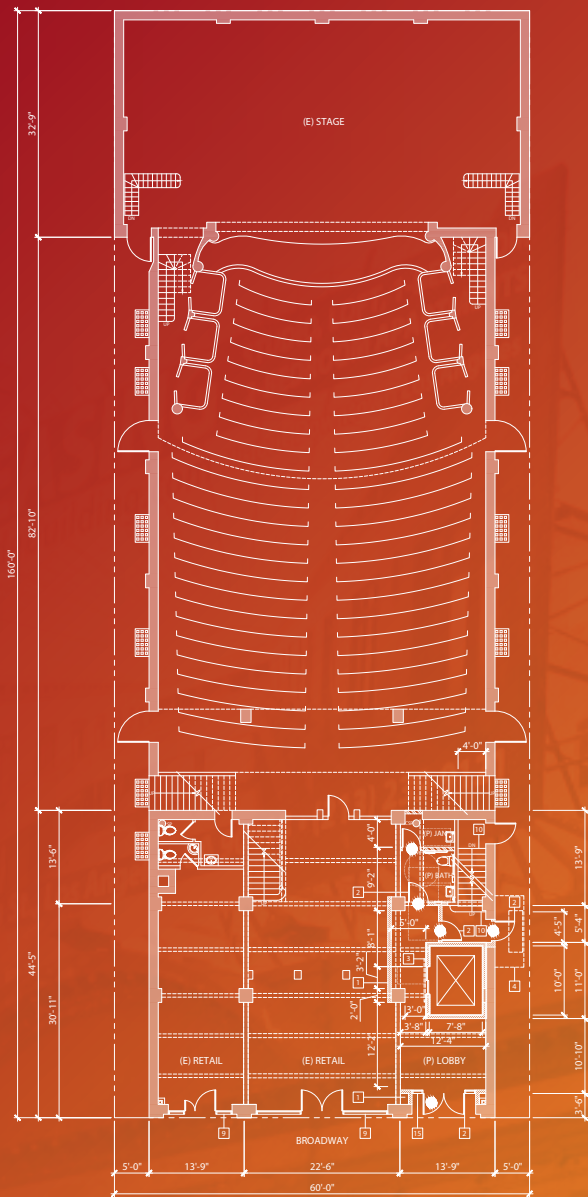
Creative Office, Studio, Theater, Production, Retail, Immersive Experience, Social Club...*and more!*

# Arcade Theatre

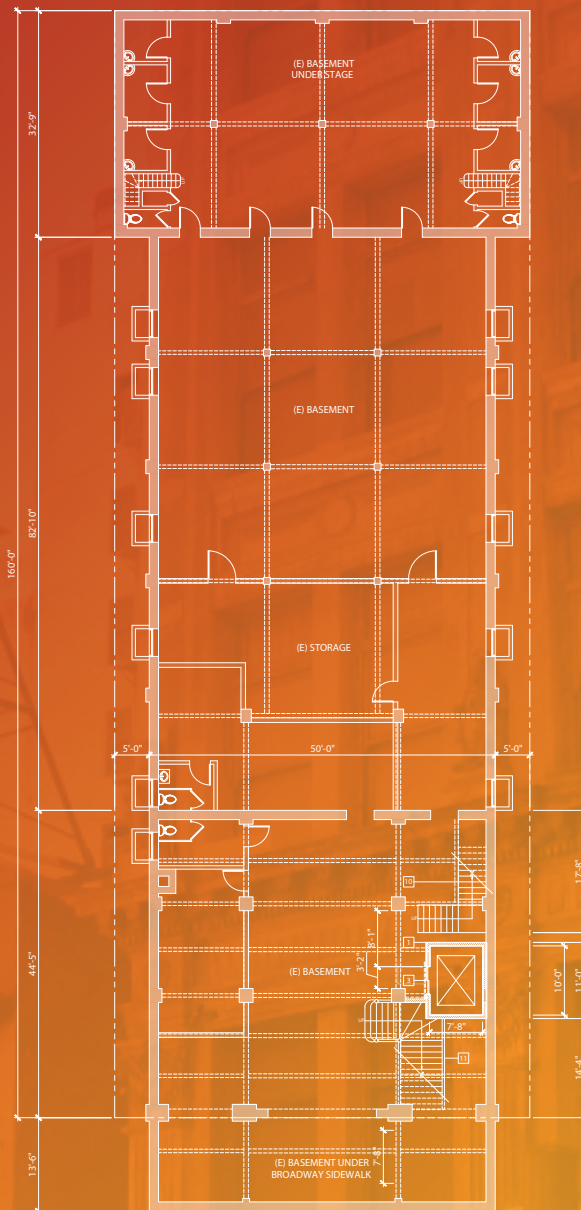
## 532 S BROADWAY

33,106 USF

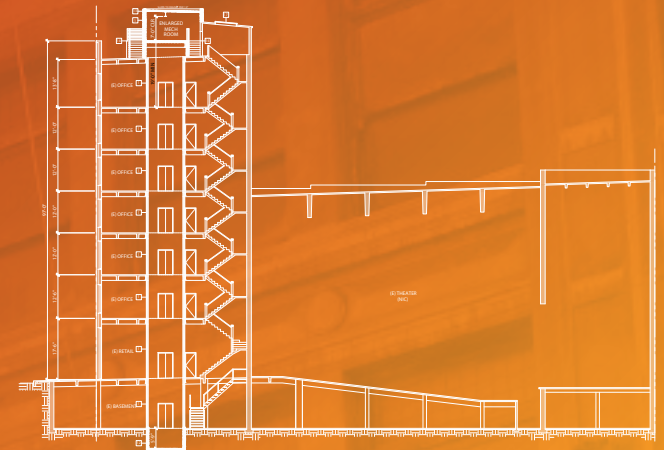
### Ground Floor Plan

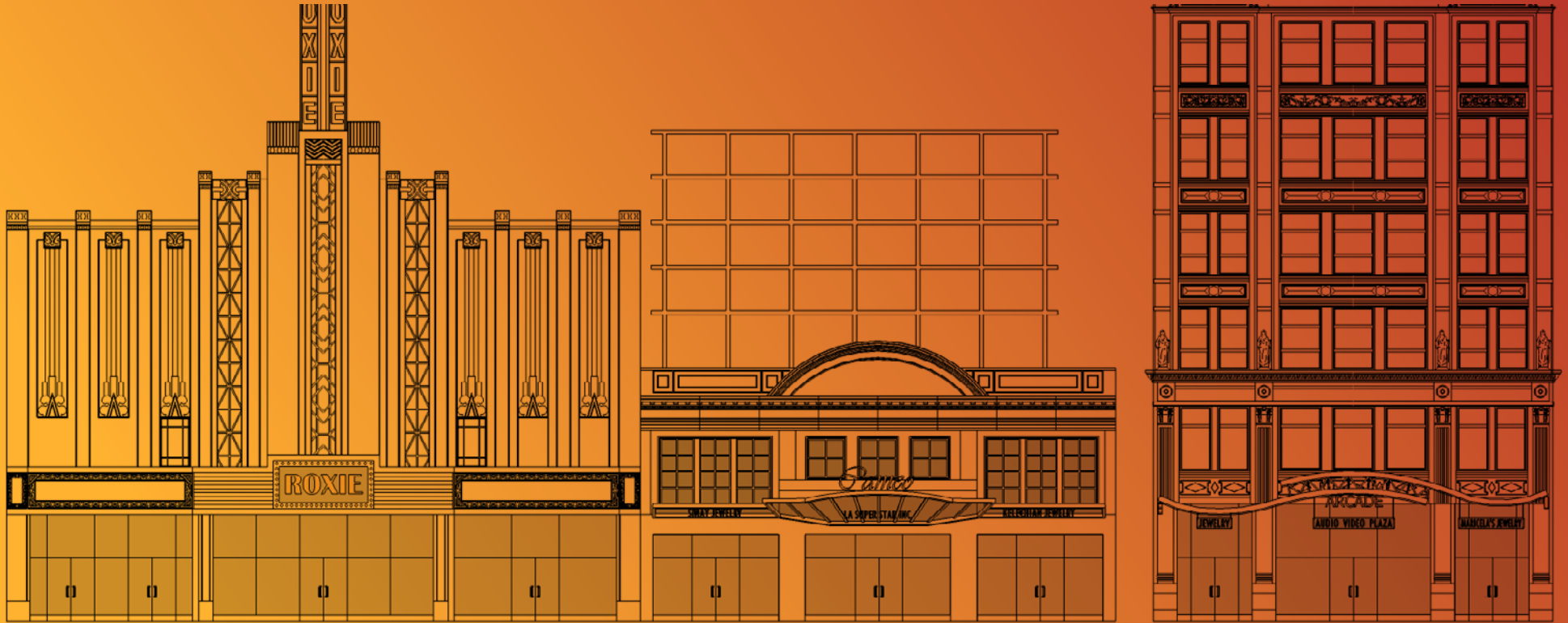


### Basement Plan



### Building Elevation





FOR MORE INFORMATION, PLEASE CONTACT:

**MIKE  
CONDON, JR.**

+1 213 629 7379  
[mike.condon@cushwake.com](mailto:mike.condon@cushwake.com)  
 CA Lic. 01884476

**BRITTANY  
WINN**

+1 213 629 6514  
[brittany.winn@cushwake.com](mailto:brittany.winn@cushwake.com)  
 CA Lic. 01978909



©2020 Cushman & Wakefield. All rights reserved. The information contained in this communication is strictly confidential. This information has been obtained from sources believed to be reliable but has not been verified. NO WARRANTY OR REPRESENTATION, EXPRESS OR IMPLIED, IS MADE AS TO THE CONDITION OF THE PROPERTY (OR PROPERTIES) REFERENCED HEREIN OR AS TO THE ACCURACY OR COMPLETENESS OF THE INFORMATION CONTAINED HEREIN, AND SAME IS SUBMITTED SUBJECT TO ERRORS, OMISSIONS, CHANGE OF PRICE, RENTAL OR OTHER CONDITIONS, WITHDRAWAL WITHOUT NOTICE, AND TO ANY SPECIAL LISTING CONDITIONS IMPOSED BY THE PROPERTY OWNER(S). ANY PROJECTIONS, OPINIONS OR ESTIMATES ARE SUBJECT TO UNCERTAINTY AND DO NOT SIGNIFY CURRENT OR FUTURE PROPERTY PERFORMANCE.