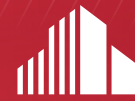


FOR LEASE

AFTON OAKS

400-500 N LOOP 1604 E

SAN ANTONIO, TEXAS 78232



CUSHMAN &
WAKEFIELD



PROPERTY DESCRIPTION

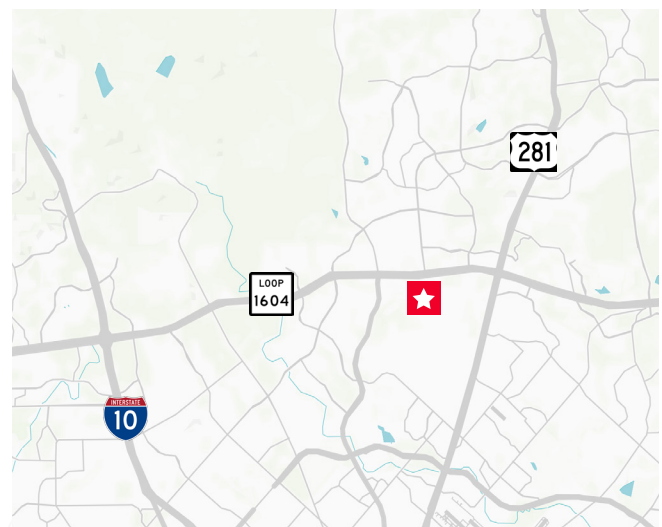
Afton Oaks is located on the eastbound access road of Loop 1604 between Voigt Drive/ Stone Oak Parkway and Hwy 281 North. Afton Oaks consists of a two-story and three-story office building in a wooded setting on Loop 1604. Amenities include covered parking and a magnetic card key system allowing 24/7 access. Tenants also benefit from the property's convenience to premier dining, lodging, retail, and health club facilities.

PROPERTY FEATURES

- 79,246 SF Building Size
- 4/1,000 Parking Ratio
- North Central Submarket

PROPERTY INFORMATION

RENTAL RATE	\$15.00 NNN
OPERATING EXPENSES (NNN)	\$12.00



FOR LEASE AFTON OAKS

400-500 N LOOP 1604 E
SAN ANTONIO, TEXAS 78232



SPACE AVAILABLE

SPACE	LEASE RATE	LEASE TYPE	SIZE (RSF)
I - Suite 220	\$15.00/sf/yr	NNN	2,594 RSF
II - Suite 300	\$15.00/sf/yr	NNN	3,328 RSF



For more information, please contact:

BRYAN SETHNEY
Managing Director
+1 210 305 4280
Bryan.Sethney@cushwake.com

4040 Broadway Street
Suite 602
San Antonio, Texas 78209

cushmanwakefield.com

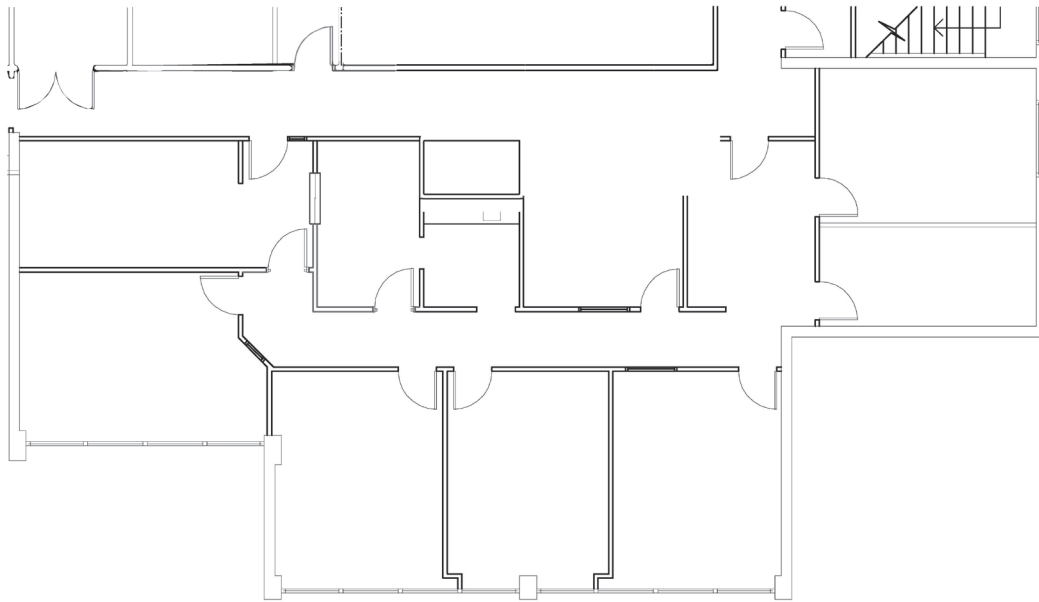
FOR LEASE
AFTON OAKS

400-500 N LOOP 1604 E
SAN ANTONIO, TEXAS 78232



AFTON OAKS I

Suite 220 - 2,594 RSF



SCALE 3/32" = 1'-0"

LOCATION MAP



For more information, please contact:

BRYAN SETHNEY
Managing Director

+1 210 305 4280

Bryan.Sethney@cushwake.com

4040 Broadway Street
Suite 602
San Antonio, Texas 78209

cushmanwakefield.com

FOR LEASE AFTON OAKS

400-500 N LOOP 1604 E
SAN ANTONIO, TEXAS 78232



AFTON OAKS II

Suite 300 - 3,328 RSF



LOCATION MAP



For more information, please contact:

BRYAN SETHNEY
Managing Director

+1 210 305 4280

Bryan.Sethney@cushwake.com

4040 Broadway Street
Suite 602
San Antonio, Texas 78209

cushmanwakefield.com