

FOR LEASE

# BROOKHOLLOW PARK



911 CENTRAL PARKWAY NORTH  
SAN ANTONIO, TEXAS 78232



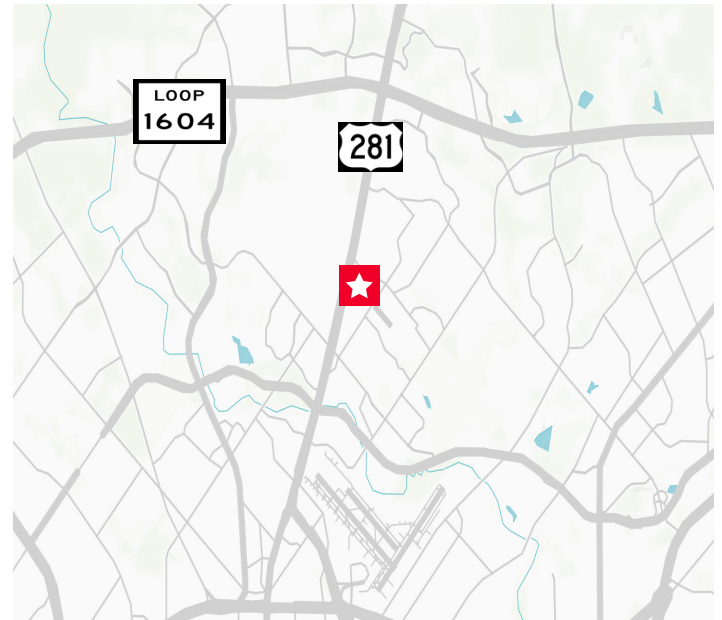
## PROPERTY HIGHLIGHTS

Brookhollow Park is a 4-story, Class A office building located 1/10 mile from Highway 281 between Bitters and Oak Shadows. The Property has structured parking for 150 spaces with covered access to building lobby (4.7/1,000 RSF) and is 24/7 card key access.

**RENTAL RATE**      \$16.00/SF/Yr

## BUILDING FEATURES

- Up to 25,843 SF contiguous
- Lease Rate: \$16.00/SF/Yr (NNN)
- Building Size: 102,466 SF
- Submarket: North Central



For more information, please contact:

**Bryan Sethney**  
Managing Director  
+1 210 305 4280  
bryan.sethney@cushwake.com

4040 Broadway Street  
Suite 602  
San Antonio, Texas 78209

[cushmanwakefield.com](http://cushmanwakefield.com)

FOR LEASE

# BROOKHOLLOW PARK

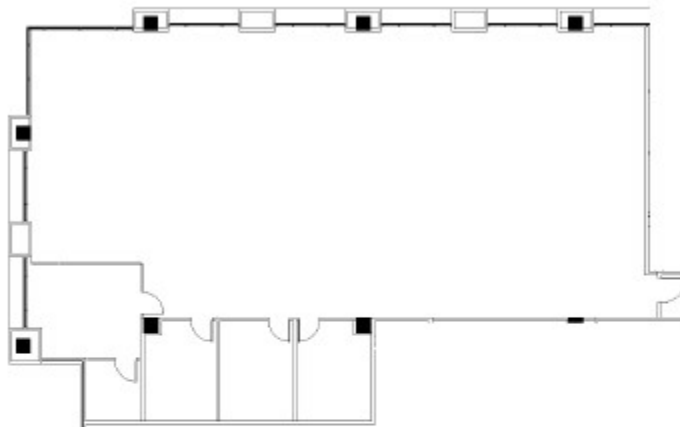


CUSHMAN &  
WAKEFIELD

911 CENTRAL PARKWAY NORTH  
SAN ANTONIO, TEXAS 78232

## FLOOR PLAN

Suite 110 - 4,886 SF



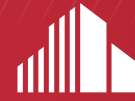
LOCATION MAP



SCALE: 1/16" = 1'-0"

FOR LEASE

# BROOKHOLLOW PARK

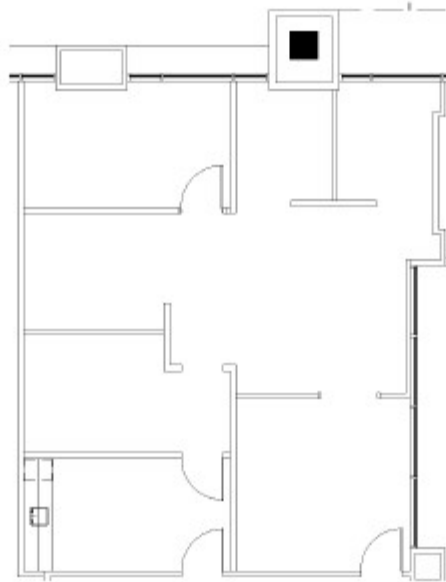


CUSHMAN &  
WAKEFIELD

911 CENTRAL PARKWAY NORTH  
SAN ANTONIO, TEXAS 78232

## FLOOR PLAN

Suite 120 - 1,089 SF



SCALE: 1/8" = 1'-0"



FOR LEASE

# BROOKHOLLOW PARK

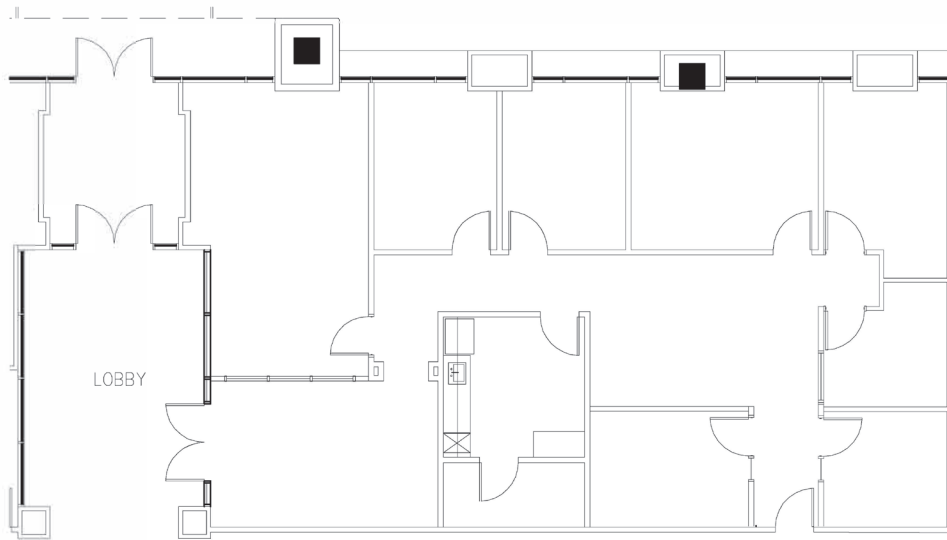


CUSHMAN &  
WAKEFIELD

911 CENTRAL PARKWAY NORTH  
SAN ANTONIO, TEXAS 78232

## FLOOR PLAN

Suite 130 - 2,338 SF



LOCATION MAP



SCALE: 3/32" = 1'-0"

FOR LEASE

# BROOKHOLLOW PARK

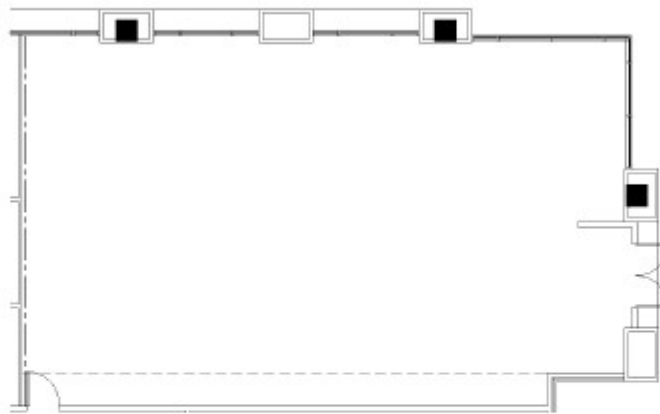


CUSHMAN &  
WAKEFIELD

911 CENTRAL PARKWAY NORTH  
SAN ANTONIO, TEXAS 78232

## FLOOR PLAN

Suite 175 - 2,116 SF



SCALE: 3/32" = 1'-0"

FOR LEASE

# BROOKHOLLOW PARK



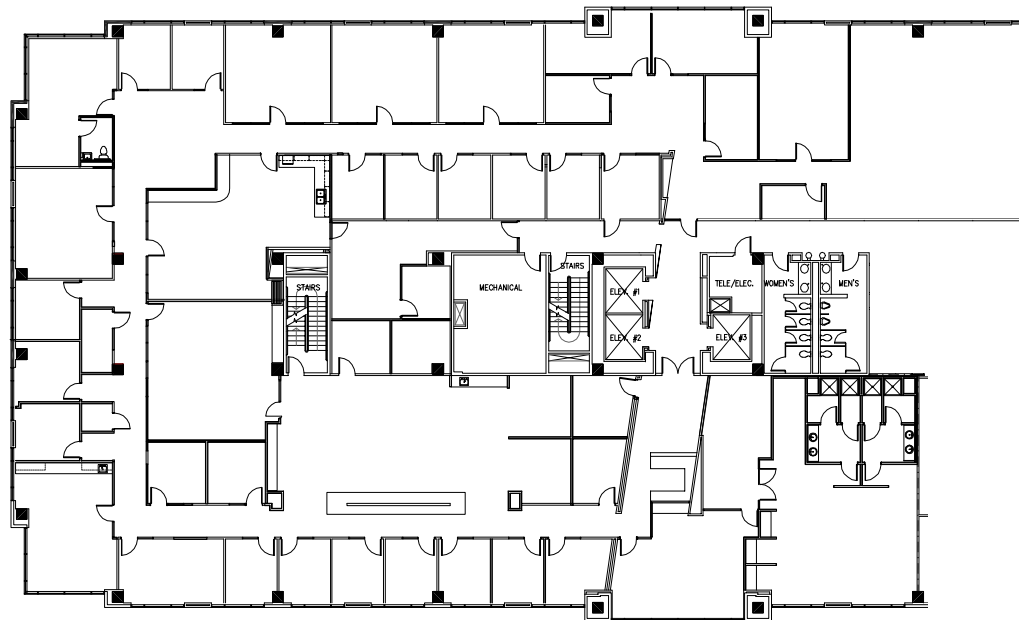
CUSHMAN &  
WAKEFIELD

911 CENTRAL PARKWAY NORTH  
SAN ANTONIO, TEXAS 78232

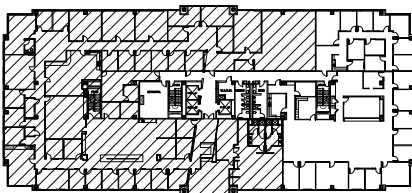
## FLOOR PLAN

Suite 300 - 19,158 SF\*

*\*contiguous to Ste. 375 (25,843 SF total)*



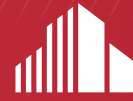
LOCATION MAP



SCALE: N.T.S.

FOR LEASE

# BROOKHOLLOW PARK



CUSHMAN &  
WAKEFIELD

911 CENTRAL PARKWAY NORTH  
SAN ANTONIO, TEXAS 78232

## FLOOR PLAN

Suite 375 - 6,685 SF\*

*\*contiguous to Ste. 300 (25,843 SF total)*

