



A HOME FRANCHISE CONCEPTS

LoanStream Mortgage

EPIC Insurance Broker & Consultant

W... & Associates

Top 10

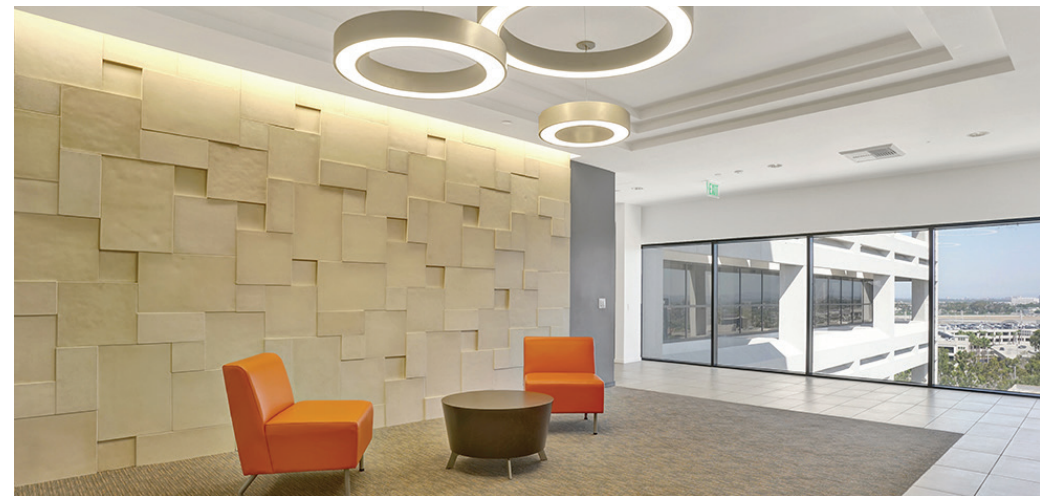
Now For Lease

19000 MACARTHUR

 CUSHMAN & WAKEFIELD

PROJECT FEATURES

- Class “A” ±164,000 RSF high rise office building directly across the street from the John Wayne Airport
- Brand new high-end outdoor collaboration area including flexible meeting space, casual seating and games
- High identity location at Campus Drive and Macarthur Boulevard
- Enhanced building exterior and common areas
- Close proximity to hotels, health clubs, restaurants and other amenities
- On-site café
- Excellent access to San Diego (405) Freeway, Cost Mesa (55) Freeway and SJH (73) Transportation Corridor
- Unobstructed airport and skyline views
- 4.0:1,000 Parking ratio



19000
MACARTHUR

ABOUT 1900 MACARTHUR

- **OUTDOOR** Seating Area
- **GAMES** Outdoor Activities
- **ON-SITE** Café
- **SPEC SUITE** Fully Built Out
- **CLASS A** High Rise Office Building
- **DINING COLLABORATION** **ADDITIONAL** dining area





19000 MACARTHUR

LOCAL RETAIL

The following restaurants, retail, services and hotels are within 5 minutes of 19000 MacArthur:

- Starbucks
- Bruegger's Bagels
- Bosscat Kitchen and Libations
- Ten Asian Bistro
- Staples
- Quiznos
- Jamba Juice
- La Salsa Fresh Mexican Grill
- Fuji Grill
- The Pacific Club
- Bistango
- Radisson Hotel
- Hilton Irvine
- Fairmont Newport
- Extended Stay America
- Bank of America
- Wells Fargo



AVAILABLE SPACE

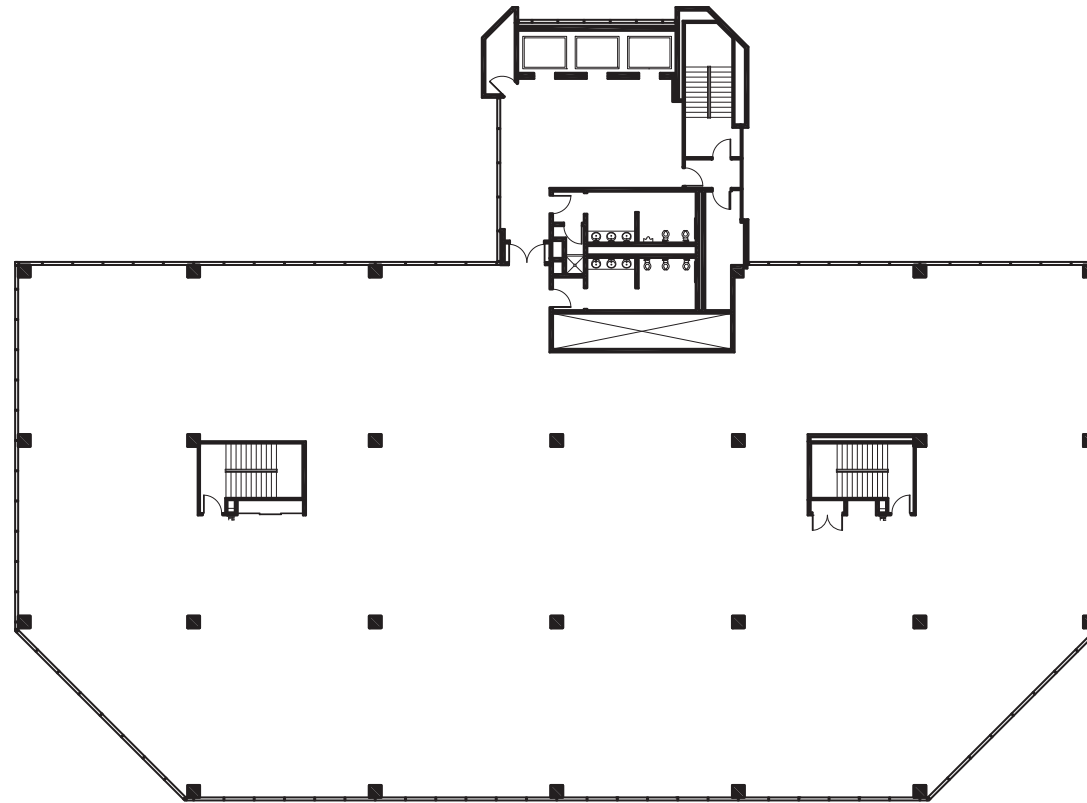
Suite	Sq. Ft.	Price	Description
300	17,005	\$2.70 FSG	White box condition, divisible to 10,000 SF.



3RD FLOOR

17,005 RSF

Suite 300
White box condition -
divisible to 10,000 SF

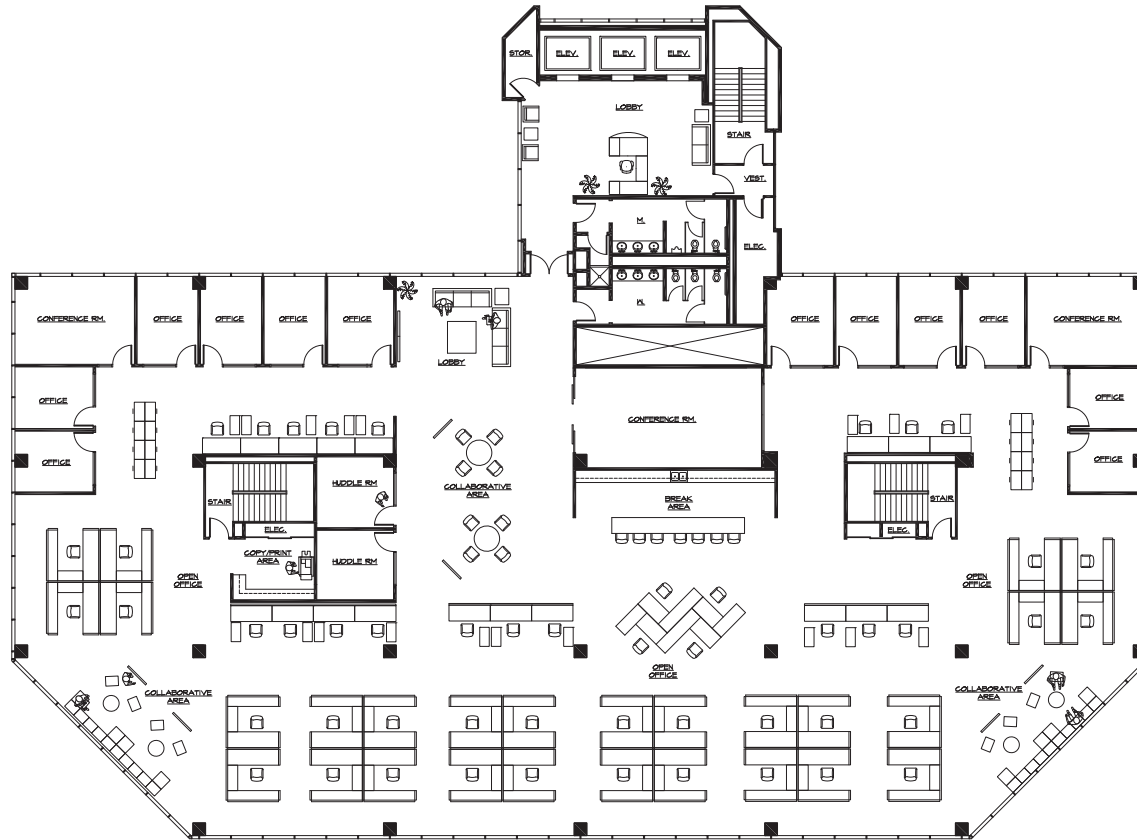


19000
MACARTHUR

3RD FLOOR

17,005 RSF

Suite 300
Hypothetical Plan



19000

MACARTHUR

19000 MACARTHUR

19000 MACARTHUR BOULEVARD
IRVINE, CALIFORNIA

FOR MORE INFORMATION, PLEASE CONTACT:

GREG BROWN

949.930.9218

greg.brown@cushwake.com

LIC. #00834223

JASON WARD

949.955.7640

jason.ward@cushwake.com

LIC. #01802243



Cushman & Wakefield copyright 2017. No warranty or representation, express or implied, is made to the accuracy or completeness of the information contained herein, and same is submitted subject to errors, omissions, change of price, rental or other conditions, withdrawal without notice, and to any special listing conditions imposed by the property owner(s). As applicable, we make no representation as to the condition of the property (or properties) in question.