

30 NORTH SAN PEDRO ROAD

SAN RAFAEL, CA

FOR LEASE



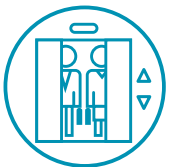
Whitney Strotz
Executive Managing Director
+1 415 451 2406
whitney.strotz@cushwake.com
Lic #: 01351397

Drew Soltis
Associate
+1 415 451 2415
drew.soltis@cushwake.com
Lic #: 02163430

900 Larkspur Landing Circle
Suite 295
Larkspur, CA, 94939



Highlights



Elevator
Served



Across from
Civic Center



Conference
Room



On Site
Parking

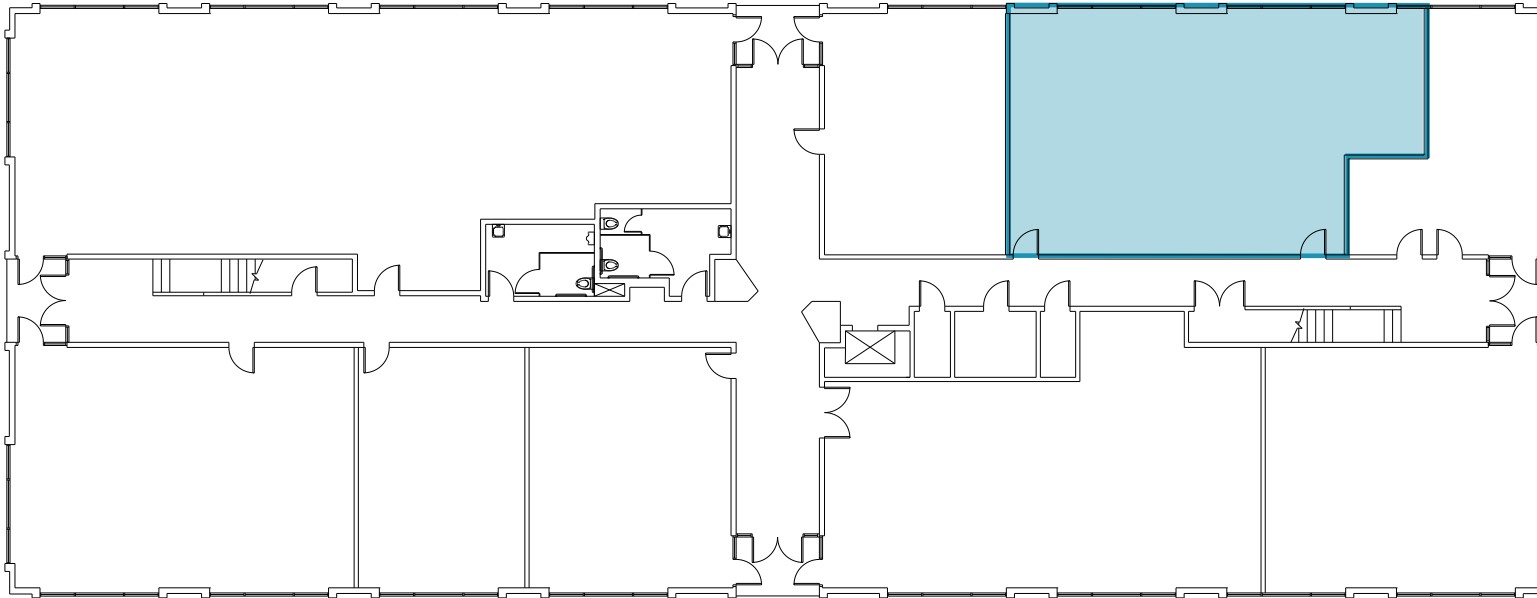


31 mi to SFO,
34 mi to OAK



Easy Access
to Highway 101

1st Floor

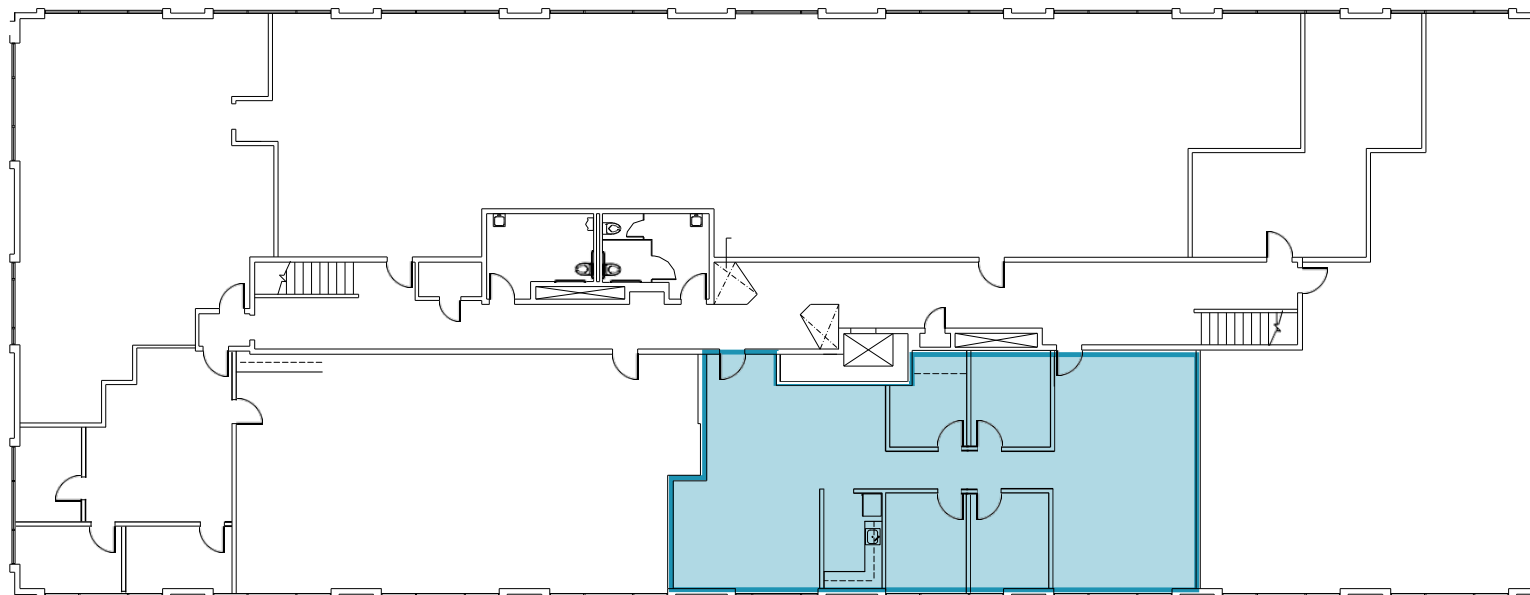


Suite 170



- ±1,659 SF
- Divisible
- \$2.65 Full Service
- 2 Private Offices
- Open Floor Plan
- Floor to Ceiling Windows
- Spec Suite

2nd Floor



Suite 275



- ±2,079 SF
- Divisible
- \$2.65 Full Service
- 4 Private Offices
- In suite kitchenette



NORTHGATE MALL

- CHIPOTLE
- MACY'S
- PEET'S COFFEE
- MI PUEBLO
- KOHL'S
- VERIZON
- FINGERS AND TOES
- HOMEGOODS
- CINEMARK CENTURY NORTHGATE
- RH OUTLET
- CHASE BANK
- HABIT BURGER
- MICHAEL'S
- STEFANO'S PIZZA
- CVS
- BLACK BEAR DINER
- RITE AID
- WELLS FARGO
- US BANK
- FLYING DUTCHMAN GYMNASTICS
- SKATE ESCAPE
- VANS
- ROADSIDE BBQ
- SAFEWAY
- BIG 5
- THE MAGIC FLUTE
- STARBUCKS
- NORTHGATE DENTAL

- REDWOOD CAFE
- RED WHALE COFFEE
- MARIN YMCA
- KAISER PERMANENTE
- SAKURA SUSHI
- BANK OF AMERICA
- LJ'S DELI
- MULBERRY ST PIZZERIA
- SMITH RANCH RD DELI/CAFE

MARIN CIVIC CENTER

★ 30 N SAN PEDRO RD

30 NORTH SAN PEDRO ROAD

SAN RAFAEL, CA

FOR LEASE



30N
SAN PEDRO RD

SAN PEDRO
Business Center

LOBBY

Whitney Strotz
Executive Managing Director
+1 415 451 2406
whitney.strotz@cushwake.com
Lic #: 01351397

Drew Soltis
Associate
+1 415 451 2415
drew.soltis@cushwake.com
Lic #: 02163430

900 Larkspur Landing Circle
Suite 295
Larkspur, CA, 94939

