

**HIGH END CREATIVE SUBLEASE**

1ST FLOOR - 18,602 RSF

2ND FLOOR - 81,000 RSF

3RD FLOOR - 74,966 RSF

FULLY FURNISHED PLUG AND PLAY

  
**101**  
**SPEAR ST**  
SAN FRANCISCO, CA



**JD Lumpkin**

+1 415 658 3648

jd.lumpkin@cushwake.com

CA Lic. # 01215057

**Elena Saccone**

+1 415 633 4347

elena.saccone@cushwake.com

CA Lic. #02151049

**Mike Mordaunt**

+1 415 992 1095

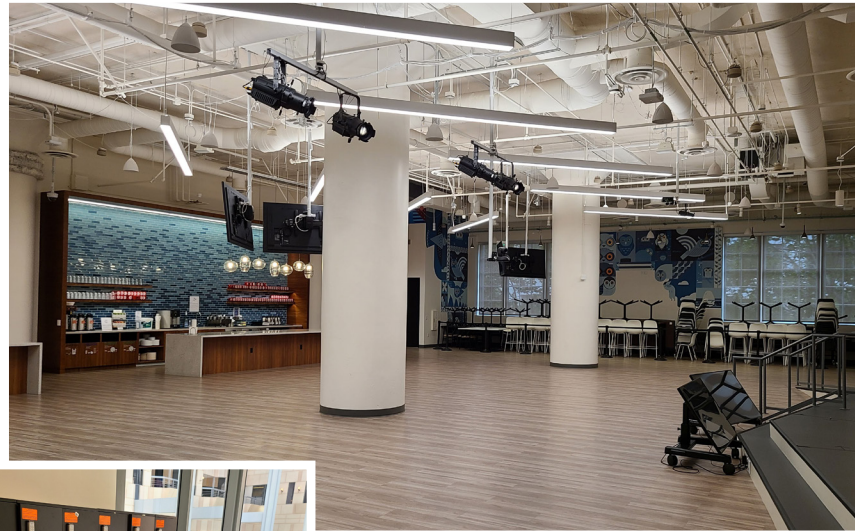
mike.mordaunt@cushwake.com

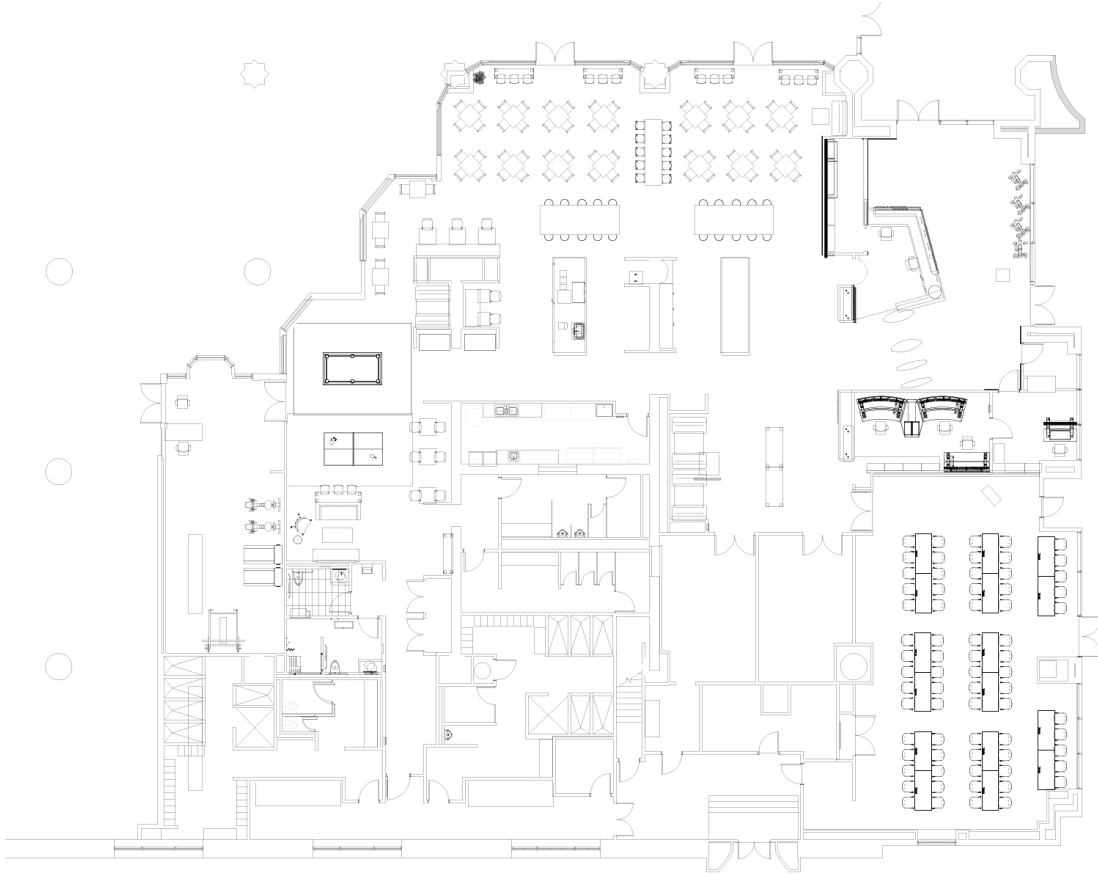
CA Lic. # 01778048

# PROPERTY HIGHLIGHTS

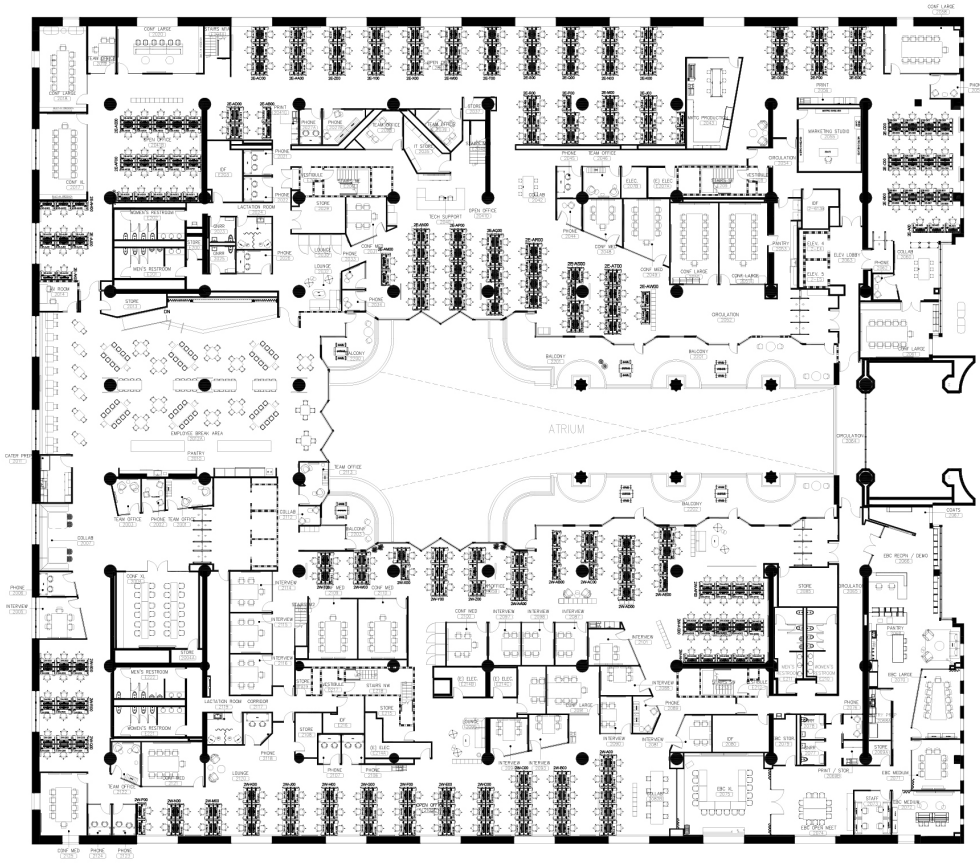


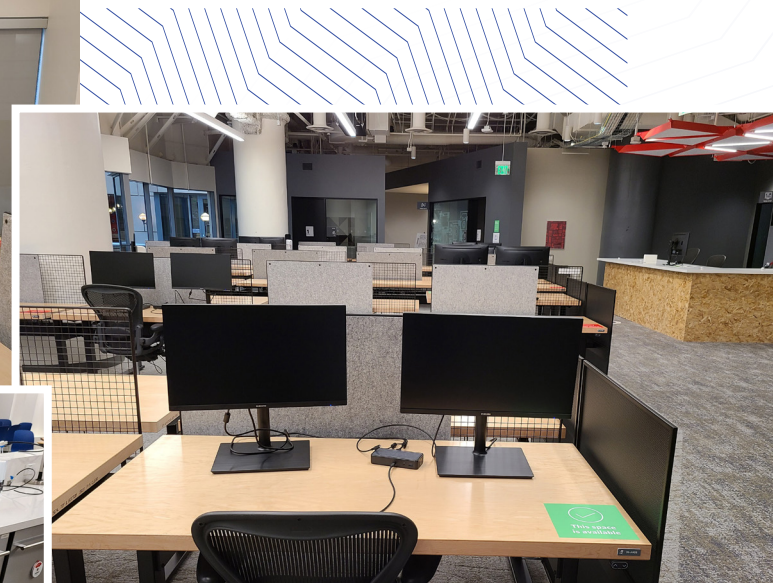
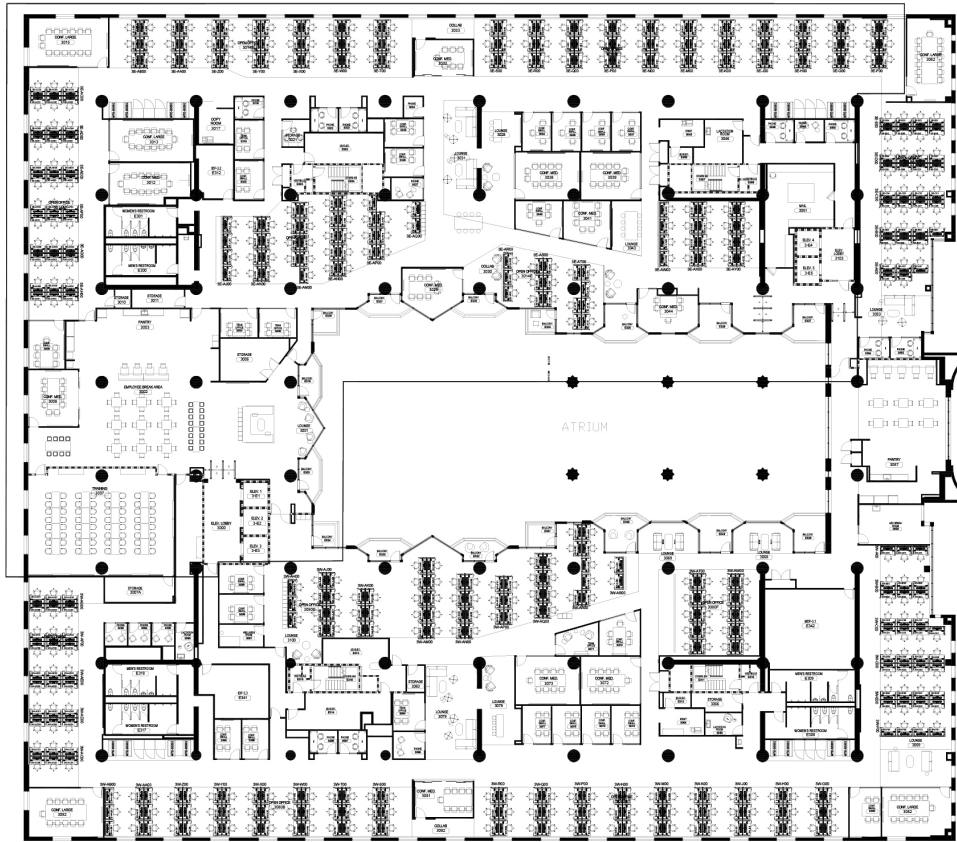
- » **Size:** 1st Floor - 18,602 RSF  
2nd Floor - 81,000 RSF  
3rd Floor - 74,966 RSF
- » **Floor(s):** 1st, 2nd & 3rd
- » **Availability:** Immediate
- » **Expiration:** 1st Floor - 6/30/2028  
2nd Floor - 3/31/2025  
3rd Floor - 6/30/2028
- » **Asking Rate:** Upon request
- » **Notes:** Plug and play





# 2ND FLOOR | 81,000 RSF







101

SPEAR ST

SAN FRANCISCO, CA



**HIGH END CREATIVE SUBLEASE**

1ST FLOOR - 18,602 RSF

2ND FLOOR - 81,000 RSF

3RD FLOOR - 74,966 RSF

FULLY FURNISHED PLUG AND PLAY

FOR MORE INFORMATION, PLEASE CONTACT:

**JD Lumpkin**

Executive Managing Director

Mobile: +1 415 377 4687

[jd.lumpkin@cushwake.com](mailto:jd.lumpkin@cushwake.com)

CA License # 01215057

**Elena Saccone**

Associate Broker

Mobile: +1 630 699 9687

[elena.saccone@cushwake.com](mailto:elena.saccone@cushwake.com)

CA License 02151049

**Mike Mordaunt**

Executive Vice Chairman

Mobile: +1 415 992 1095

[mike.mordaunt@cushwake.com](mailto:mike.mordaunt@cushwake.com)

CA License #01778048