

The Concourse
Outstanding Distribution Space
Central City of Industry Location
Immediate Access to the (60) Freeway



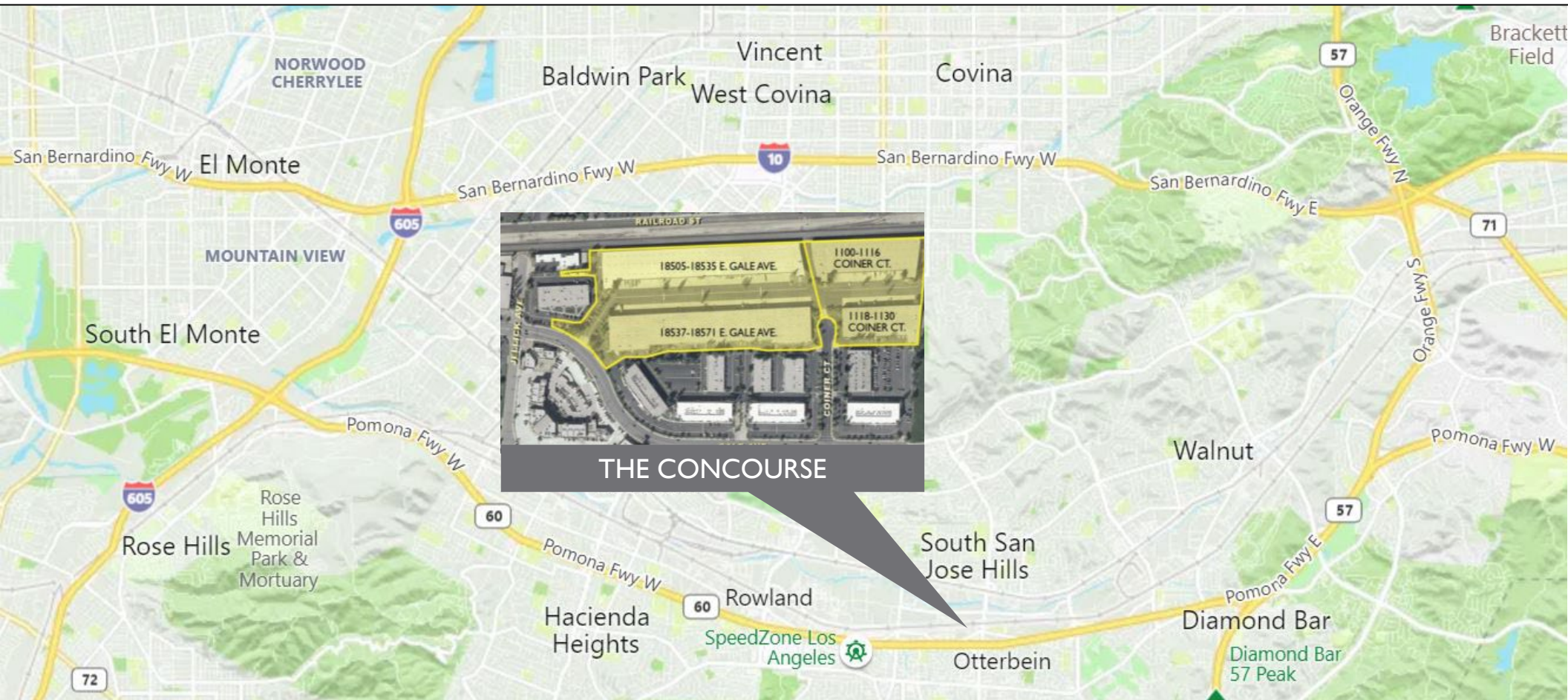
CITY OF INDUSTRY'S PREMIER CLASS-A BUSINESS PARK

THE CONCOURSE
City of Industry, CA



PROPERTY FEATURES

THE CONCOURSE



PROPERTY HIGHLIGHTS

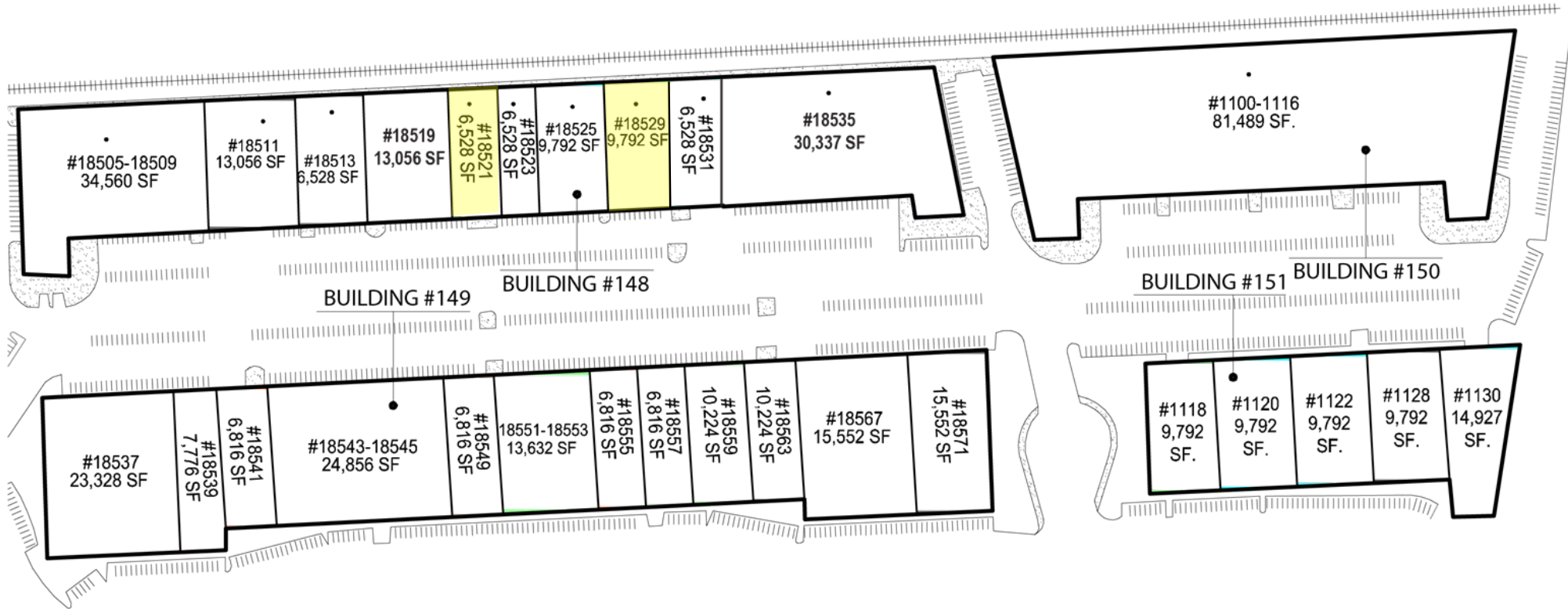
- A 420,697 SF Campus with Units Ranging from 6,528 SF to 81,489 SF
- Immediate (60) Freeway Access via Fullerton Road & Nogales Street
- Close Proximity to Retail Amenities
- 24' Minimum Clear Height
- Abundant Dock High Loading
- Large Truck Court (over 160 feet)

AVAILABLE UNITS

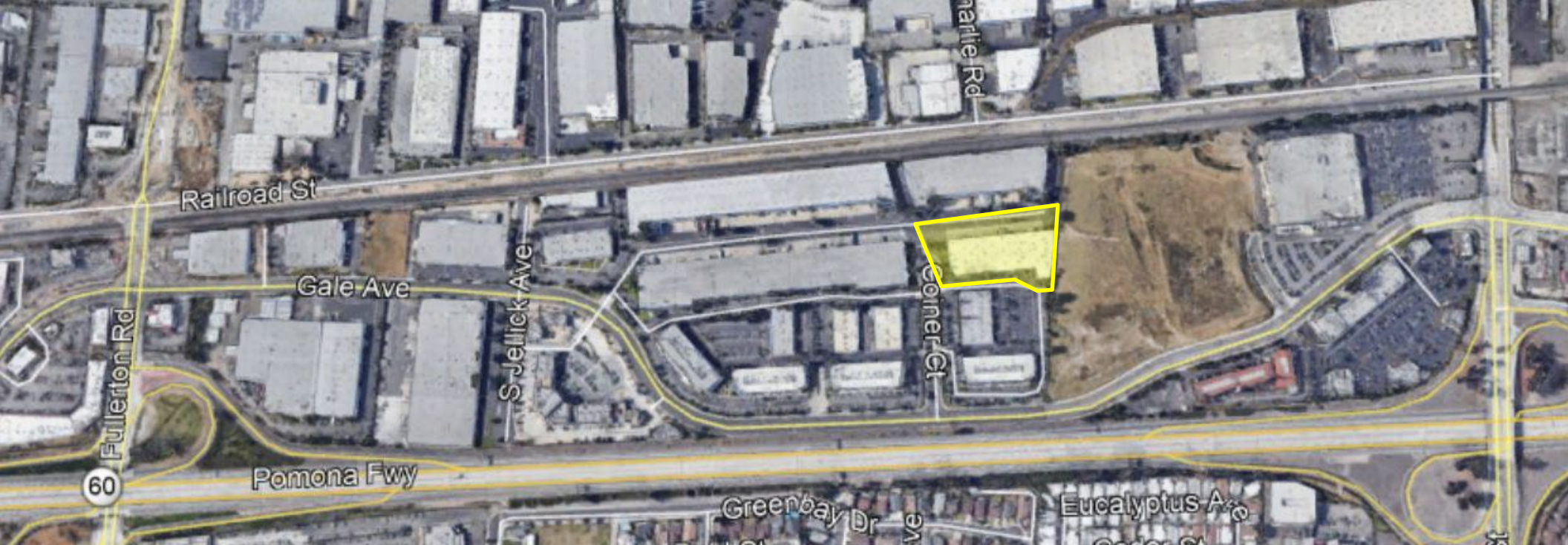
UNIT	SIZE	OFFICE	LOADING	AVAILABLE	PRICE
18521 E Gale Ave	6,528 SF	1,122 SF	1 DH, 1 GL	NOW	\$2.05 psf IG
18529 E Gale Ave	9,792 SF	2,190 SF	2 DH, 0 GL	NOW	\$1.95 psf IG

PROJECT SITE PLAN

THE CONCOURSE



 AVAILABLE



LEASING CONTACTS

Chris Tolles
Executive Director | Brokerage
+1 213 9555129
christopher.tolles@cushwake.com
License: 01459899

Erik Larson
Executive Director | Brokerage
+1 213 9555126
erik.larson@cushwake.com
License: 01213790

Robin Dodson
Executive Director | Brokerage
+1 213 9556460
robin.dodson@cushwake.com
License: 00956329



900 Wilshire Boulevard,
Suite, 2400
Los Angeles, CA 90017
+1 213 9555100
License: 0061635

[Covid-19 Prevention Plan](#)

Cushman & Wakefield Copyright 2018. No warranty or representation, express or implied, is made to the accuracy or completeness of the information contained herein, and same is submitted subject to errors, omissions, change of price, rental or other conditions, withdrawal without notice, and to any special listing conditions imposed by the property owner(s). As applicable, we make no representation as to the condition of the property (or properties) in question.