

MERIDIAN ONE

FOR LEASE OR SALE

9785 MAROON CIRCLE | ENGLEWOOD, COLORADO 80112

W. Ryan Stout
303.813.6448
ryan.stout@cushwake.com

Zachary T. Williams
303.813.6474
zach.williams@cushwake.com

Nathan J. Bradley
303.813.6444
nate.bradley@cushwake.com

 CUSHMAN &
WAKEFIELD

MERIDIAN ONE

BUILDING FEATURES:

- » 140,416 RBA
- » BUILT IN 1983
- » PARKING: 3.50: 1,000 RSF
\$50.00/PER MONTH COVERED
- » CONFERENCING FACILITY
- » FITNESS CENTER
- » ENERGY STAR LABELED

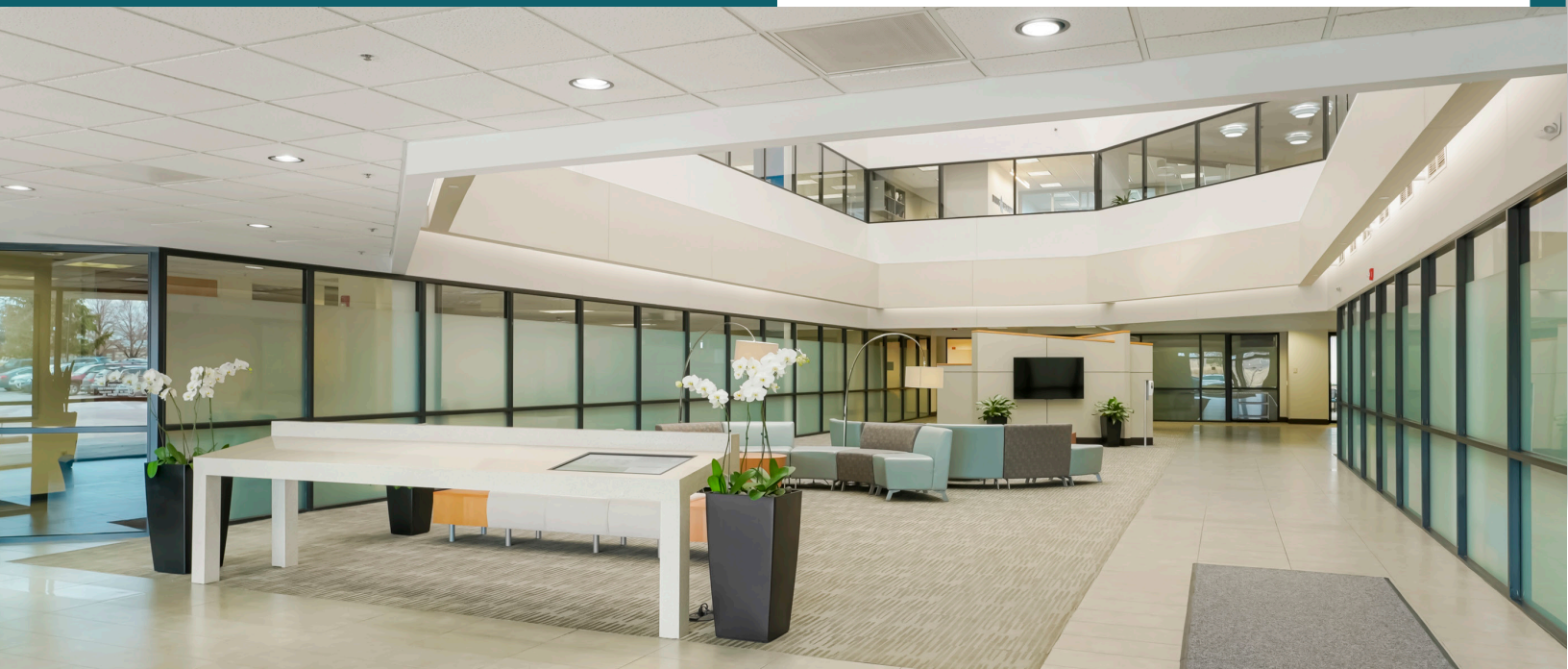
LOCATION HIGHLIGHTS:

MERIDIAN ONE OVERLOOKS THE BEAUTIFULLY LANDSCAPED MERIDIAN GOLF COURSE

IMMEDIATE ACCESS TO LINCOLN AVE, C-470 & I-25

CONVENIENT TO EXECUTIVE HOUSING, PARK MEADOWS MALL & CENTENNIAL AIRPORT

MULTIPLE RESTAURANTS & RETAILERS NEARBY





MERIDIAN ONE

INCREDIBLE ACCESS!

CENTENNIAL PROMENADE

10 Dining Options! 55+ Retail Destinations!

- | | |
|---------------------|----------------|
| J. Alexander's | Jason's Deli |
| Rock Bottom | Firehouse Subs |
| Sonoda's Sushi | IKEA |
| Longhorn Steakhouse | World Market |
| Genghis Grill | REI |
| Wahoo's Fish taco | |

PARK MEADOWS

36 Dining Options!
140+ Retail Destinations!

- | | |
|--------------------|-----------------------|
| Brio Tuscan Grill | Cheesecake Factory |
| earls | Yard House |
| La Sandia | White Chocolate Grill |
| PF Changs | Red Robin |
| Perry's Steakhouse | |
| The Melt | |
| Thai Basil | |

LINCOLN STATION

CANDLEWOOD SUITES

Hilton Garden Inn

MERIDIAN ONE

Zagster Meridian Bike Share

Zagster Meridian Bike Share

KNEADERS BAKERY

STARBUCKS COFFEE

FITNESS

Great Beginnings

Little's Donuts & Bakery Shop

LINCOLN AVENUE

- | | |
|---------------------|----------------|
| Chili's Grill & Bar | Five Guys |
| Chipotle | Qdoba |
| Starbucks | Mad Greens |
| Snooze | Firehouse Subs |
| Garbanzo | Yogurtini |
| Costa Vida | Target |
| Heidi's Deli | Safeway |

9785 MAROON CIRCLE | ENGLEWOOD, COLORADO 80112

OFFICE FOR LEASE, FOR INFORMATION CONTACT:

W. Ryan Stout
303.813.6448
ryan.stout@cushwake.com

Zachary T. Williams
303.813.6474
zach.williams@cushwake.com

Nathan J. Bradley
303.813.6444
nate.bradley@cushwake.com

 CUSHMAN & WAKEFIELD