

**SUBLEASE AVAILABLE**

**40**

**MARCUS DRIVE**

**MELVILLE, NEW YORK**



## **PROPERTY HIGHLIGHTS | CLASS A OFFICE FOR SUBLEASE**

### **SPACE AVAILABLE**

First Floor +-2,528 SF

### **TERM**

Through 2/28/24

### **SPACE FEATURES**

Aggressive Rent

Excellent Layout

### **CO-TENANTS**

Cook Maran, ADT Security Systems, Aldridge

Pite, LLP, Bio

Restorative Therapies, Inc.

### **PROPERTY FEATURES**

- At the corner of Marcus Drive and Republic Road, with easy access to LIE.
- Close to the Farmingdale and Pinelawn LIRR Stations.
- Covered Parking
- Monument Signage Available

### **Rob Koppersmith**

Direct Line: +1 631 425 1220

Office: +1 631 425 1220

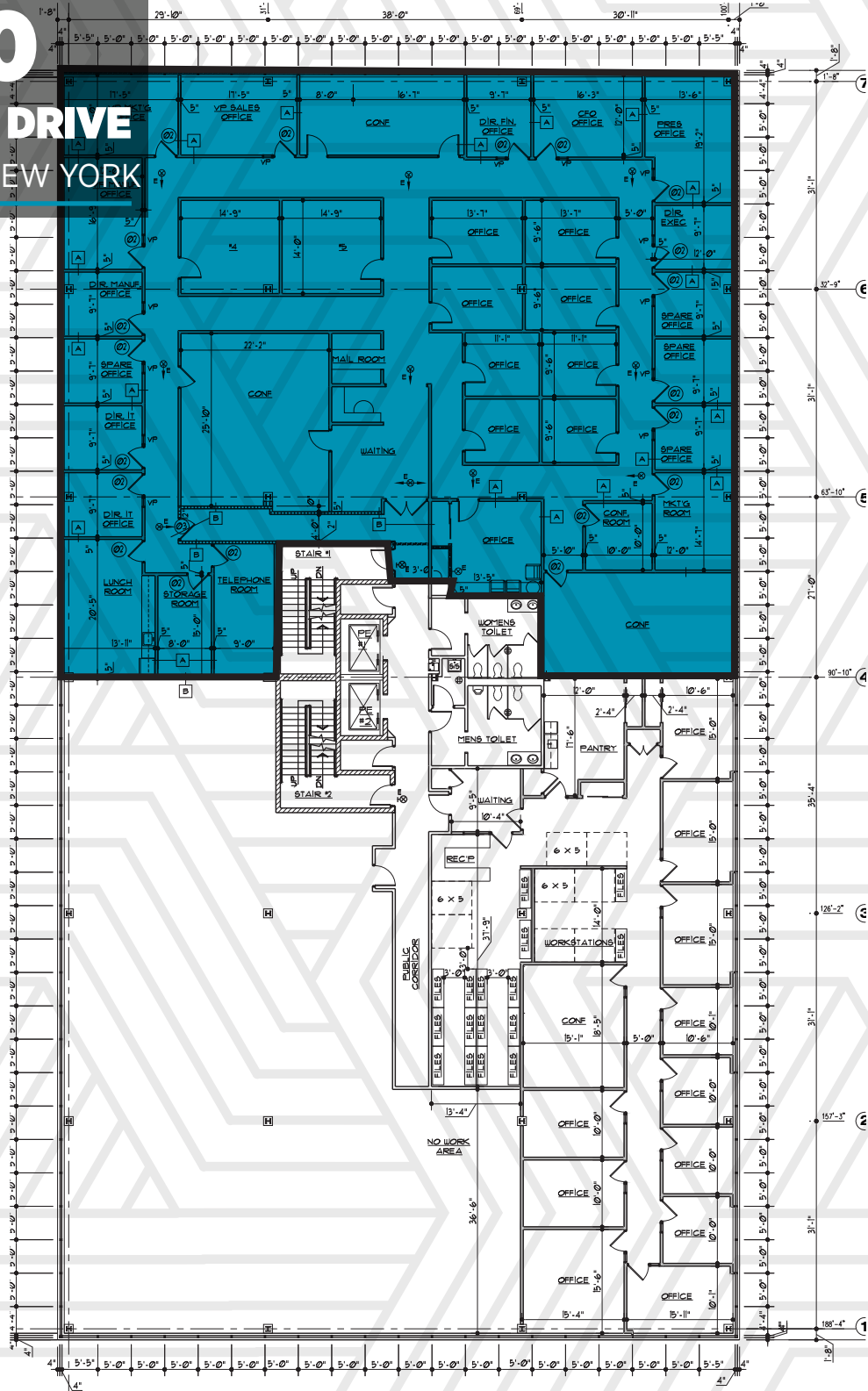
robert.koppersmith@cushwake.com



SUBLEASE AVAILABLE

40

MARCUS DRIVE  
MELVILLE, NEW YORK



**Rob Koppersmith**

Direct Line: +1 631 425 1220

Office: +1 631 425 1220

robert.koppersmith@cushwake.com

