



CUSHMAN &
WAKEFIELD

FOR SUBLEASE

910

Louisiana

SPACE DETAILS

Term

Through 12/31/2025

Rental Rate

\$18.50/RSF "gross"

Furniture

Available (floor 43)

BUILDING INFORMATION

LEED Gold

Lobby recently renovated

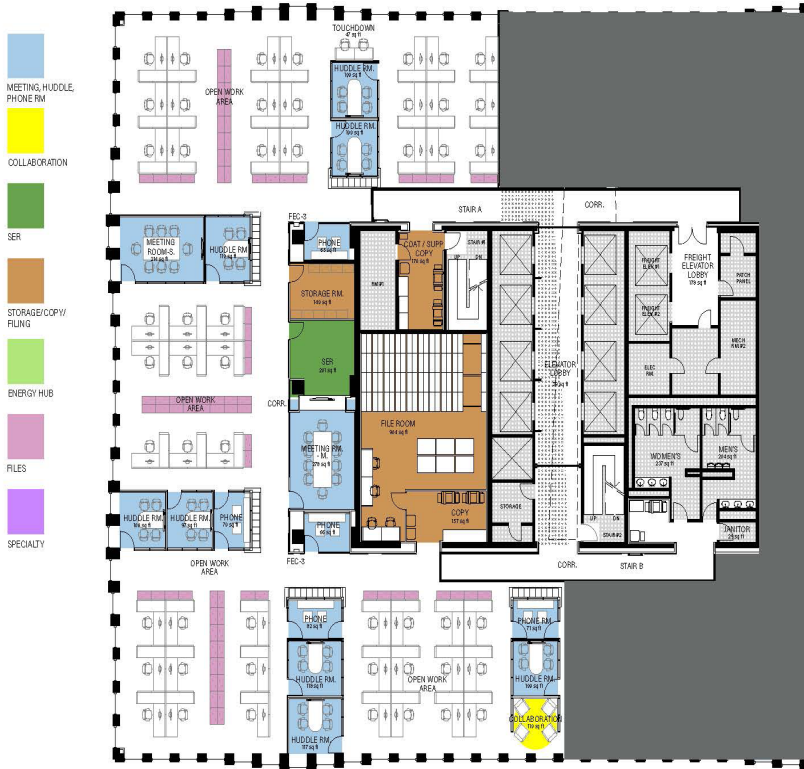
Conference rooms and auditorium available for exclusive use by all subtenants

State-of-the-art fitness center comprising one full floor



FLOOR 43

12,431 RSF



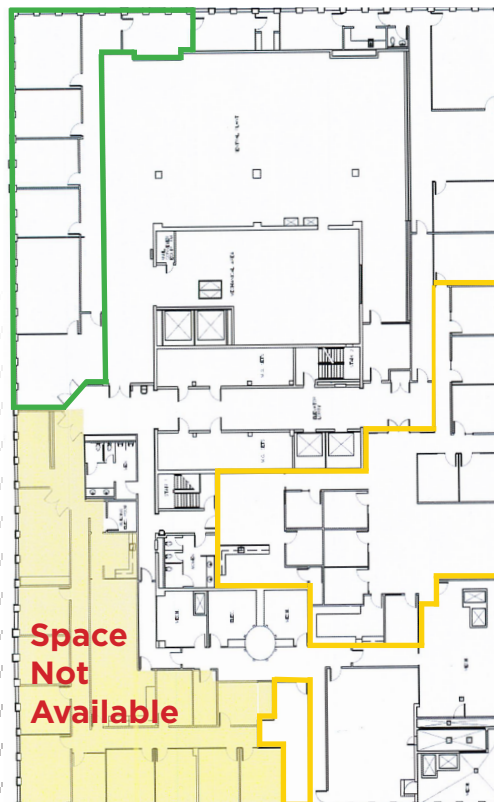
FLOOR 50

2,835 RSF

(move-in condition)

4,466 RSF

(requires renovation)



Space Details

2,835 RSF

- move-in condition
- top floor with excellent views
- reception area with elevator lobby exposure
- conference room
- private window offices
- storage room

4,466 RSF

- top floor views
- renovations required



AREA AMENITIES

- Located in the heart of the CBD tunnel system
- Adjacent to numerous METRO stops
- Tunnel connected to Civic Center & Tranquility Parking Garage
- Hyatt Regency, DoubleTree Hotel & Lancaster Hotel

CONTACT

MORGAN RELYEA COLT
Executive Director
+1 713 331 1787
morgan.relyea@cushwake.com

JOSEPH E. PEDDIE
Vice Chairman
+1 713 877 8380
joe.peddie@cushwake.com

TIM D. RELYEA
Executive Vice Chairman
+1 713 877 8752
tim.relyea@cushwake.com

