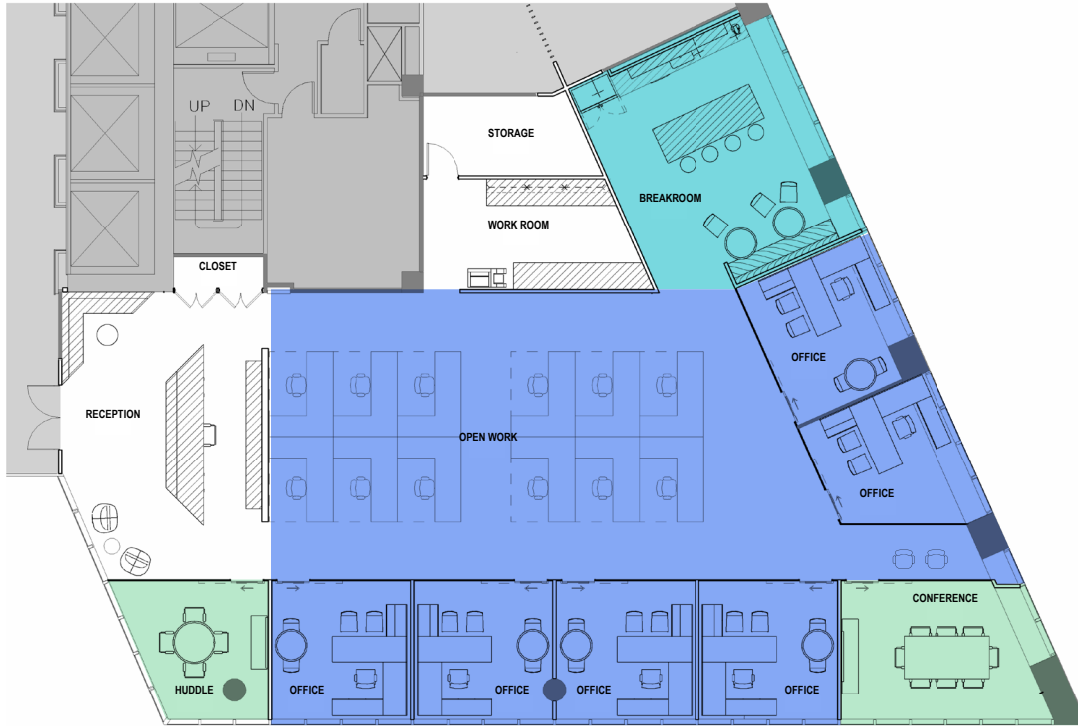


Suite 3850

5,436 SF

1001 SIGNATURE



- OFFICE / OPEN WORK SPACE
 - 6 Offices
 - 12 Workstations
- CONFERENCE/HUDDLE ROOMS
- BREAK ROOM



[CLICK OR SCAN BELOW TO VIEW FULL BROCHURE](#)

A QR code is displayed on a blue background, intended for scanning to view the full brochure.

For more information, please contact:

Brad Beasley
Managing Director
713 260 0210
brad.beasley@cushwake.com

Chip Colvill
Executive Vice Chairman
713 260 0200
chip.colvill@cushwake.com

1001 SIGNATURE

CUSHMAN & WAKEFIELD