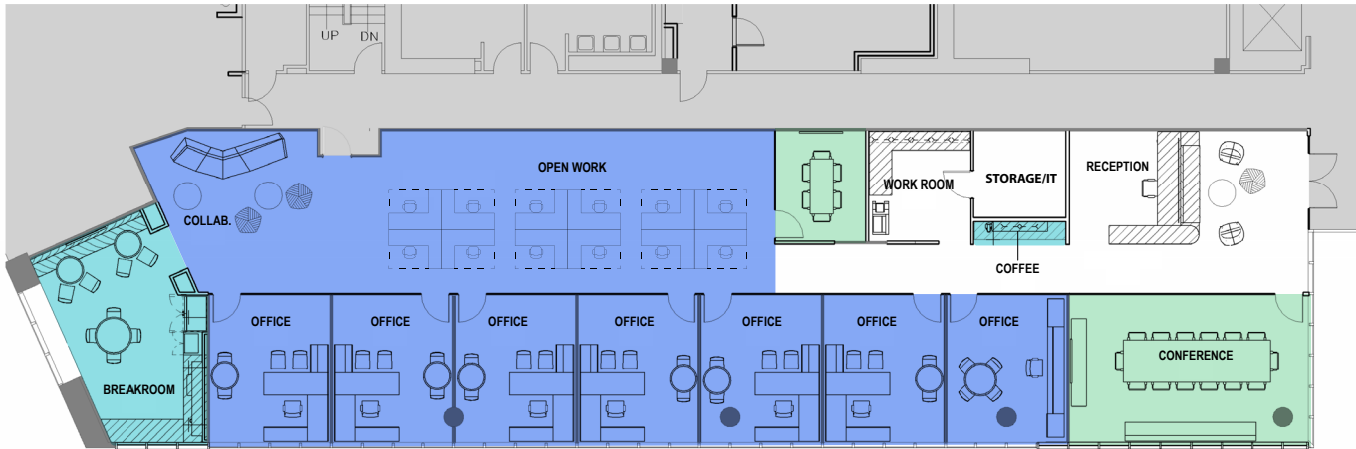
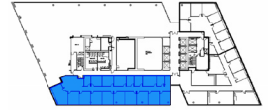


Suite 3875

5,884 SF



OFFICE / OPEN WORK SPACE

7 Offices
12 Workstations

CONFERENCE/HUDDLE ROOMS

BREAK ROOM/COFFEE BAR



[CLICK OR SCAN BELOW TO VIEW FULL BROCHURE](#)



For more information, please contact:

Brad Beasley
Managing Director
713 260 0210
brad.beasley@cushwake.com

Chip Colvill
Executive Vice Chairman
713 260 0200
chip.colvill@cushwake.com

