



HUNNINGTON I



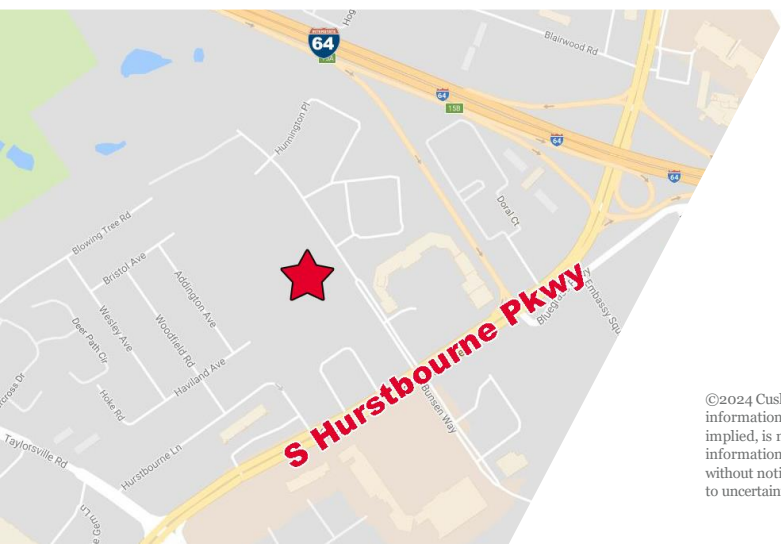
9420 BUNSEN PARKWAY

Louisville, KY 40220

**SUITES AVAILABLE
FROM 1,972 SF TO
5,026 SF**

PROPERTY HIGHLIGHTS

- Recently renovated 60,000-sf Class A office space available
- Suites available from 1,972 sf to 5,026 sf
- Beautiful first floor solarium
- Located at Hurstbourne Parkway and Bunsen Parkway
- Easy access to I-64
- Efficient floor plates



BRENT BOLAND, CCIM

Senior Director
502 384 4494 ext. 134
bboland@commercialkentucky.com

BRENT DOLEN, SIOR, CCIM

Senior Director
502 589 5150 ext. 262
bdolen@commercialkentucky.com

333 E. Main Street, Suite 510 | Louisville, KY 40202

+1 502 589 5150

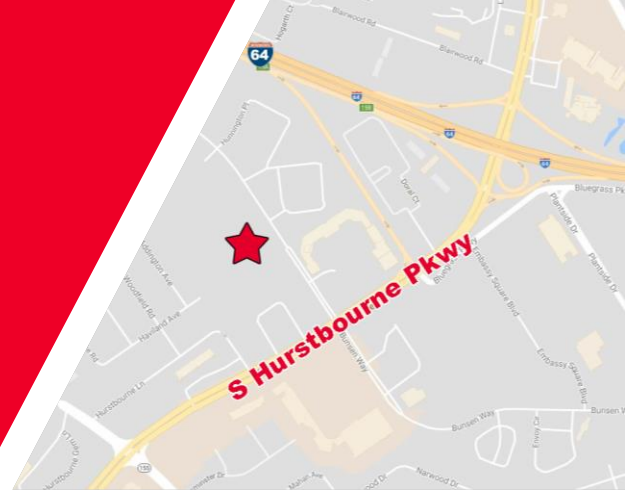
www.CommercialKentucky.com

©2024 Cushman & Wakefield. All rights reserved. The information contained in this communication is strictly confidential. This information has been obtained from sources believed to be reliable but has not been verified. No warranty or representation, express or implied, is made as to the condition of the property (or properties) referenced herein or as to the accuracy or completeness of the information contained herein, and same is submitted subject to errors, omissions, change of price, rental or other conditions, withdrawal without notice, and to any special listing conditions imposed by the property owner(s). Any projections, opinions or estimates are subject to uncertainty and do not signify current or future property performance.

9420 BUNSEN PARKWAY

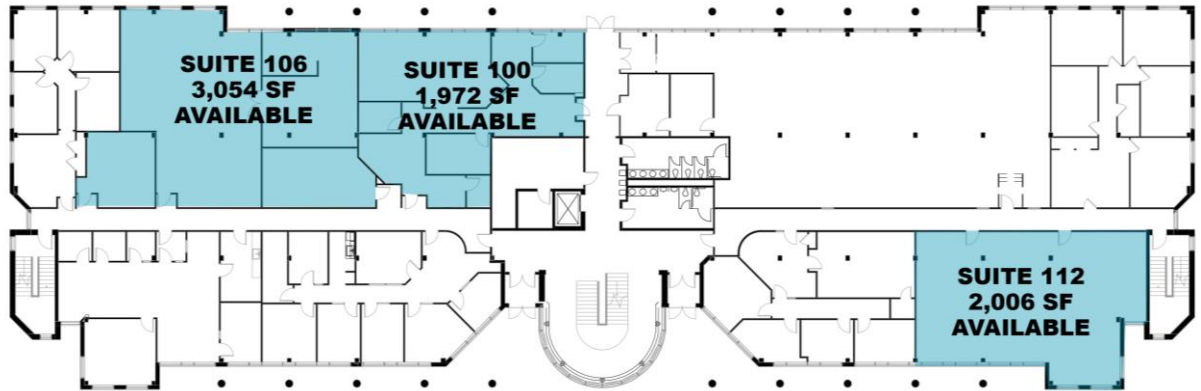
Louisville, KY 40220

SUITES AVAILABLE FROM 1,972 SF TO 5,026 SF

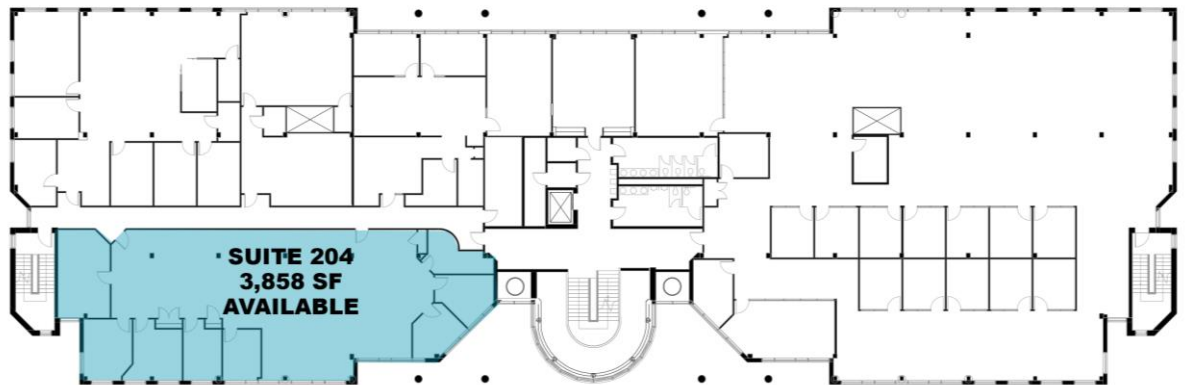


FLOOR PLANS

1st Floor Plan



2nd Floor Plan



BRENT BOLAND, CCIM

Senior Director
502 384 4494 ext. 134
bboland@commercialkentucky.com

BRENT DOLEN, SIOR, CCIM

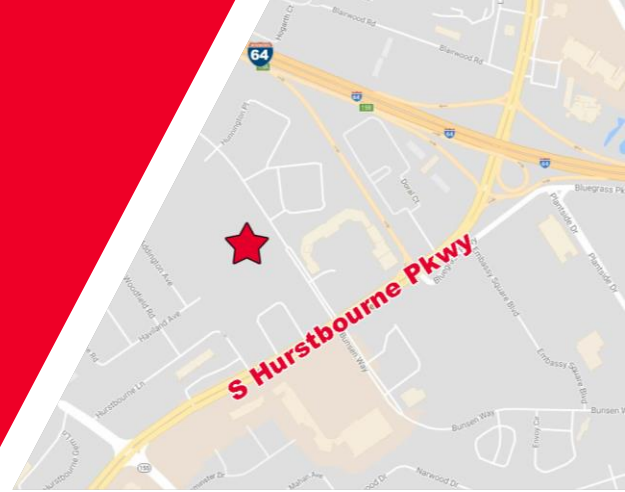
Senior Director
502 589 5150 ext. 262
bdolen@commercialkentucky.com

333 E. Main Street, Suite 510
Louisville, KY 40202
phone: +1 502 589 5150
www.CommercialKentucky.com

9420 BUNSEN PARKWAY

Louisville, KY 40220

SUITES AVAILABLE FROM 1,972 SF TO 5,026 SF



AERIAL/LOCATION MAP



Demographics

	1 Mile	3 Mile	5 Mile
Population	9,675	90,535	220,736
AVG. HH Income	\$103,885	\$100,892	\$102,221
Daytime Population	17,033	121,090	261,526

Traffic Counts

I-64	137,448 ADT
Hurstbourne Parkway	74,600 ADT
Bunsen Parkway	5,459 ADT

BRENT BOLAND, CCIM

Senior Director
502 384 4494 ext. 134
bboland@commercialkentucky.com

BRENT DOLEN, SIOR, CCIM

Senior Director
502 589 5150 ext. 262
bdolen@commercialkentucky.com

333 E. Main Street, Suite 510
Louisville, KY 40202 phone: +1
502 589 5150
www.CommercialKentucky.com