

# SUBLEASE AVAILABLE

## 29,079 SF

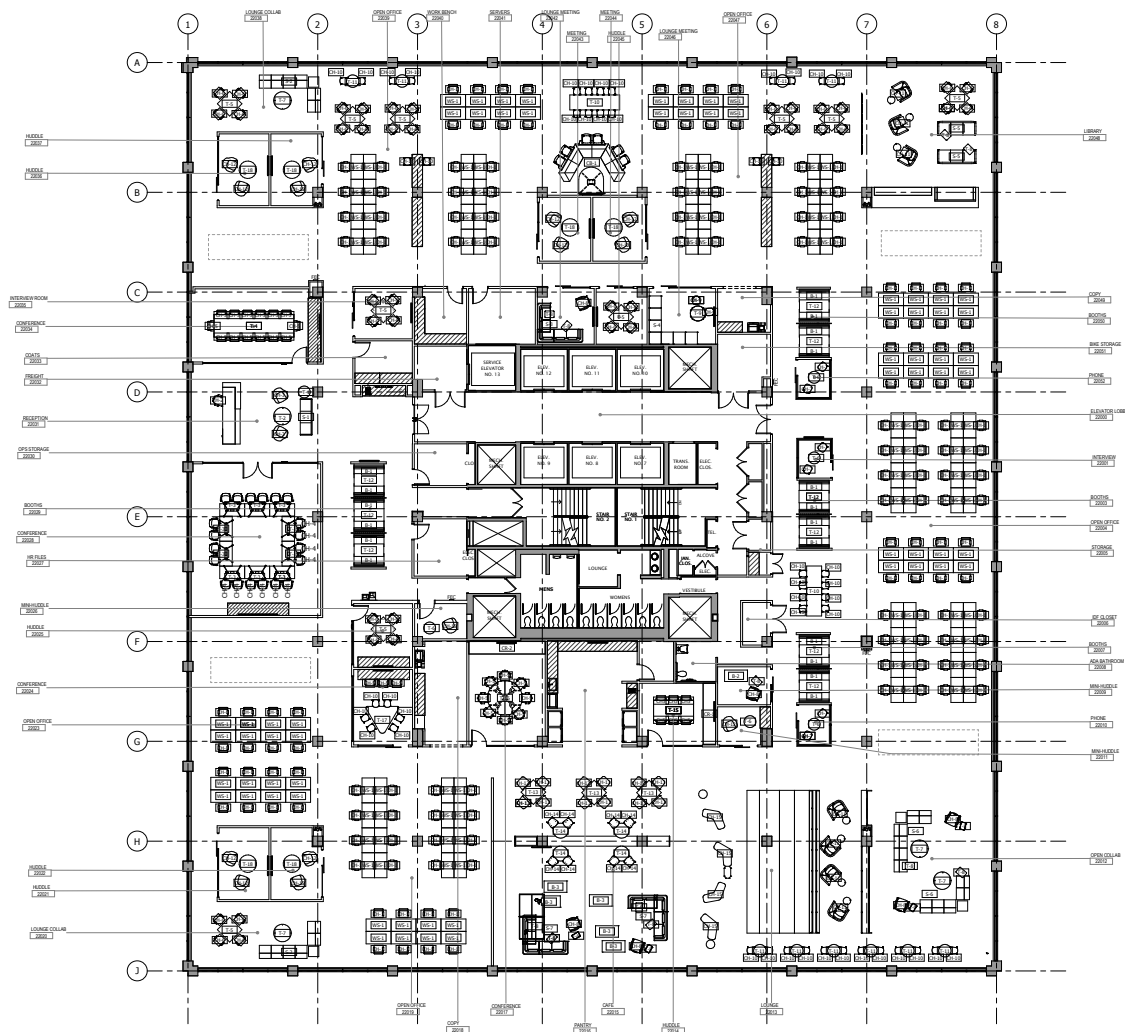


*200 West Monroe Street | Chicago, IL*



*Excellent Existing Conditions  
Term through 9/30/2027  
Available Immediately*

# 29,079 SF 22ND FLOOR



## SUBLEASE HIGHLIGHTS

- Negotiable Rental Rate
- 144 Workstations
- Term through September 2027
- Furniture Included

Steve Schneider  
Vice Chairman  
+1 312 424 8119  
steve.schneider@cushwake.com

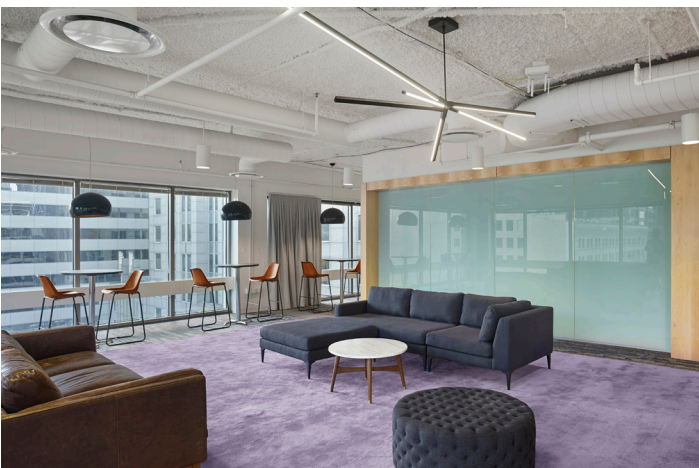
Chip Evans  
Senior Associate  
+1 312 424 8050  
charles.evans@cushwake.com

Presley Norby  
Associate  
+1 312 338 7064  
presley.norby@cushwake.com





# SPACE PHOTOS



Steve Schneider  
Vice Chairman  
+1 312 424 8119  
steve.schneider@cushwake.com

Chip Evans  
Senior Associate  
+1 312 424 8050  
charles.evans@cushwake.com

Presley Norby  
Associate  
+1 312 338 7064  
presley.norby@cushwake.com

