



# UNION TOWER

## 550 WEST VAN BUREN STREET

### AVAILABILITIES

**TERM:** FLEXIBLE (SEPTEMBER 30, 2026 OR SEPTEMBER 30, 2029)

**RATE:** NEGOTIABLE

**AVAILABLE:** IMMEDIATELY

- 4th Floor – 20,667 SF
- 5th Floor – 20,667 SF

- \* The spaces may be subleased separately or together
- \* Contiguous 4th and 5th Floor

**Total – 41,334 SF**

### PROPERTY HIGHLIGHTS



Boutique West Loop Office Building



Lounge with Gaming Area



Column-free Floor Plates



Conference Center



New Fitness Center

### AREA AMENITIES

- Convenient West Loop location adjacent to Union Station
- Across the street from the West Loop's largest outdoor parks, totaling 1.5 acres
- Within a few blocks of two of the largest food halls in Chicago - Willis Tower & The Post Office

**Josh Feldman**

+1 312-424-8091

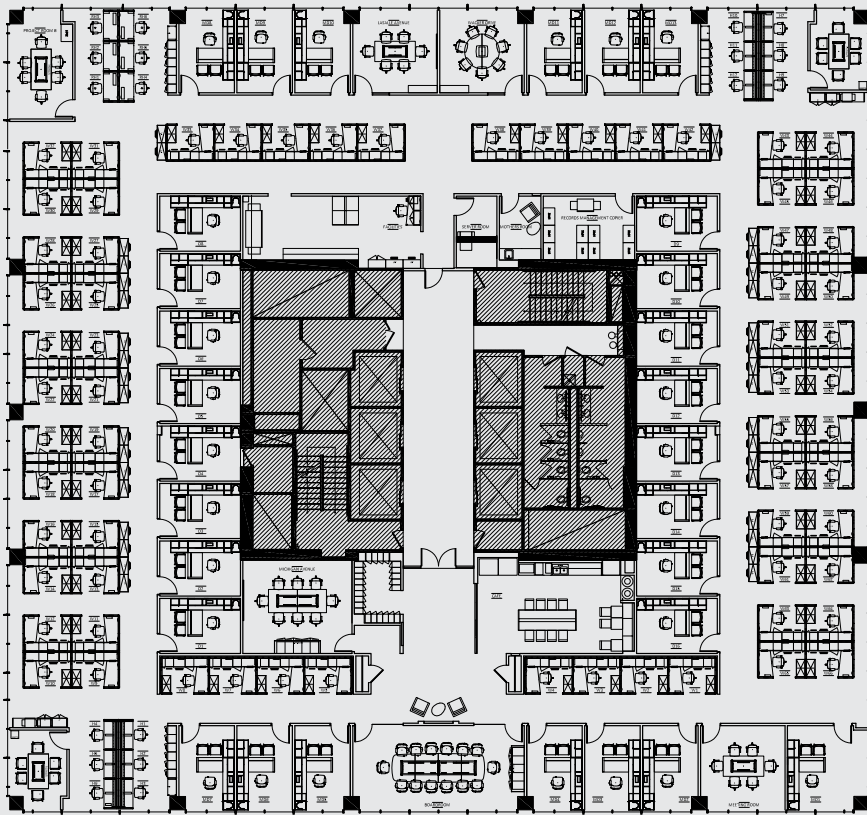
josh.feldman@cushwake.com

**Elizabeth Berlin**

+1 312-754-3345

elizabeth.berlin@cushwake.com

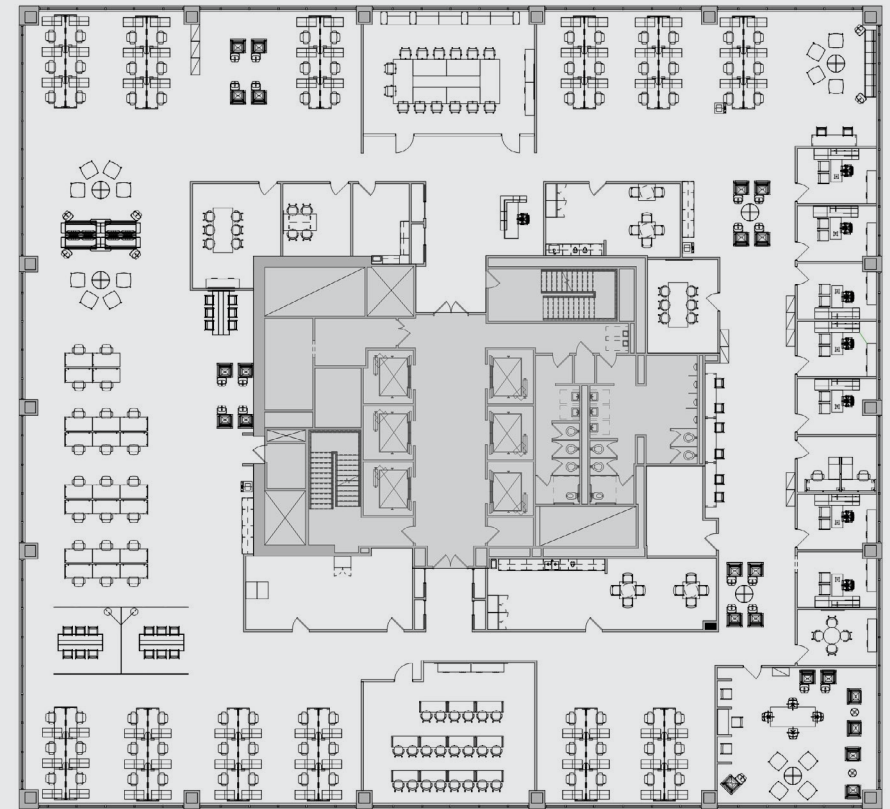
**NEW WEST LOOP SUBLEASE AVAILABLE**



## 4TH FLOOR PLAN - 20,667 SF

- 29 Private offices (16 interior and 13 exterior)
- 84 Workstations
- 8 Conference rooms/meeting rooms
- Large, open-concept café adjacent to reception
- Fully furnished

[TAKE A TOUR](#)



*\*5th Floor plan is a rendering for marketing purposes and does not depict existing conditions. An existing conditions plan is available upon request.*

## 5TH FLOOR PLAN - 20,667 SF

- Mostly open plan with 9 private exterior offices

[VIEW 3D RENDERING](#)

**Josh Feldman**

+1 312-424-8091  
josh.feldman@cushwake.com

**Elizabeth Berlin**

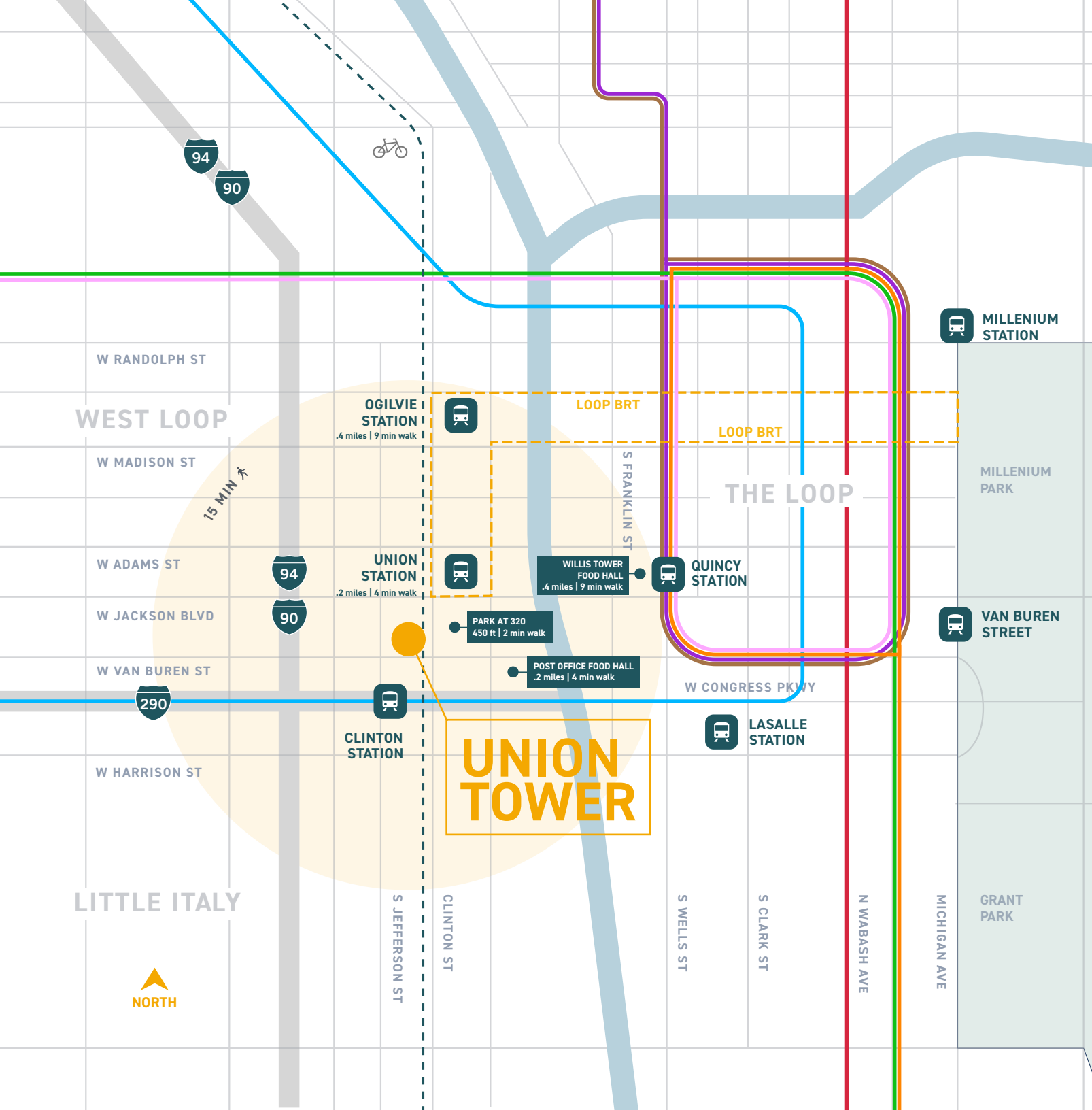
+1 312-754-3345  
elizabeth.berlin@cushwake.com





**Josh Feldman**  
+1 312-424-8091  
[josh.feldman@cushwake.com](mailto:josh.feldman@cushwake.com)

**Elizabeth Berlin**  
+1 312-754-3345  
[elizabeth.berlin@cushwake.com](mailto:elizabeth.berlin@cushwake.com)



**FOR MORE INFORMATION,  
PLEASE CONTACT:**

**Josh Feldman**  
+1 312-424-8091  
josh.feldman@cushwake.com

**Elizabeth Berlin**  
+1 312-754-3345  
elizabeth.berlin@cushwake.com



©2021 Cushman & Wakefield. All rights reserved. The information contained in this communication is strictly confidential. This information has been obtained from sources believed to be reliable but has not been verified. NO WARRANTY OR REPRESENTATION, EXPRESS OR IMPLIED, IS MADE AS TO THE CONDITION OF THE PROPERTY (OR PROPERTIES) REFERENCED HEREIN OR AS TO THE ACCURACY OR COMPLETENESS OF THE INFORMATION CONTAINED HEREIN, AND SAME IS SUBMITTED SUBJECT TO ERRORS, OMISSIONS, CHANGE OF PRICE, RENTAL OR OTHER CONDITIONS, WITHDRAWAL WITHOUT NOTICE, AND TO ANY SPECIAL LISTING CONDITIONS IMPOSED BY THE PROPERTY OWNER(S). ANY PROJECTIONS, OPINIONS OR ESTIMATES ARE SUBJECT TO UNCERTAINTY AND DO NOT SIGNIFY CURRENT OR FUTURE PROPERTY PERFORMANCE.