

PLUG & PLAY SUBLEASE IN CHICAGO'S NEW OLD POST OFFICE



42,620 SF OF
FLEXIBLE SPACE.

NEW HIGH-END
DESIGN.

EXCEPTIONAL
AMENITIES.

STELLAR
VIEWS.

VIDEO
TOUR



433 WEST VAN BUREN STREET





SUBLEASE CONTACTS

JACK KEENAN
Vice Chair
+1 312 871 5014
jack.keenan@cushwake.com

JACK DEROCHE
Director
+1 312 229 4570
jack.deroche@cushwake.com





SUBLEASE HIGHLIGHTS

A long-term, turn-key sublease with brand new build-out and high-end finishings that allow you to walk into a flexible, vibrant, dynamic work environment in a building that delivers amenities like nowhere else in Chicago.

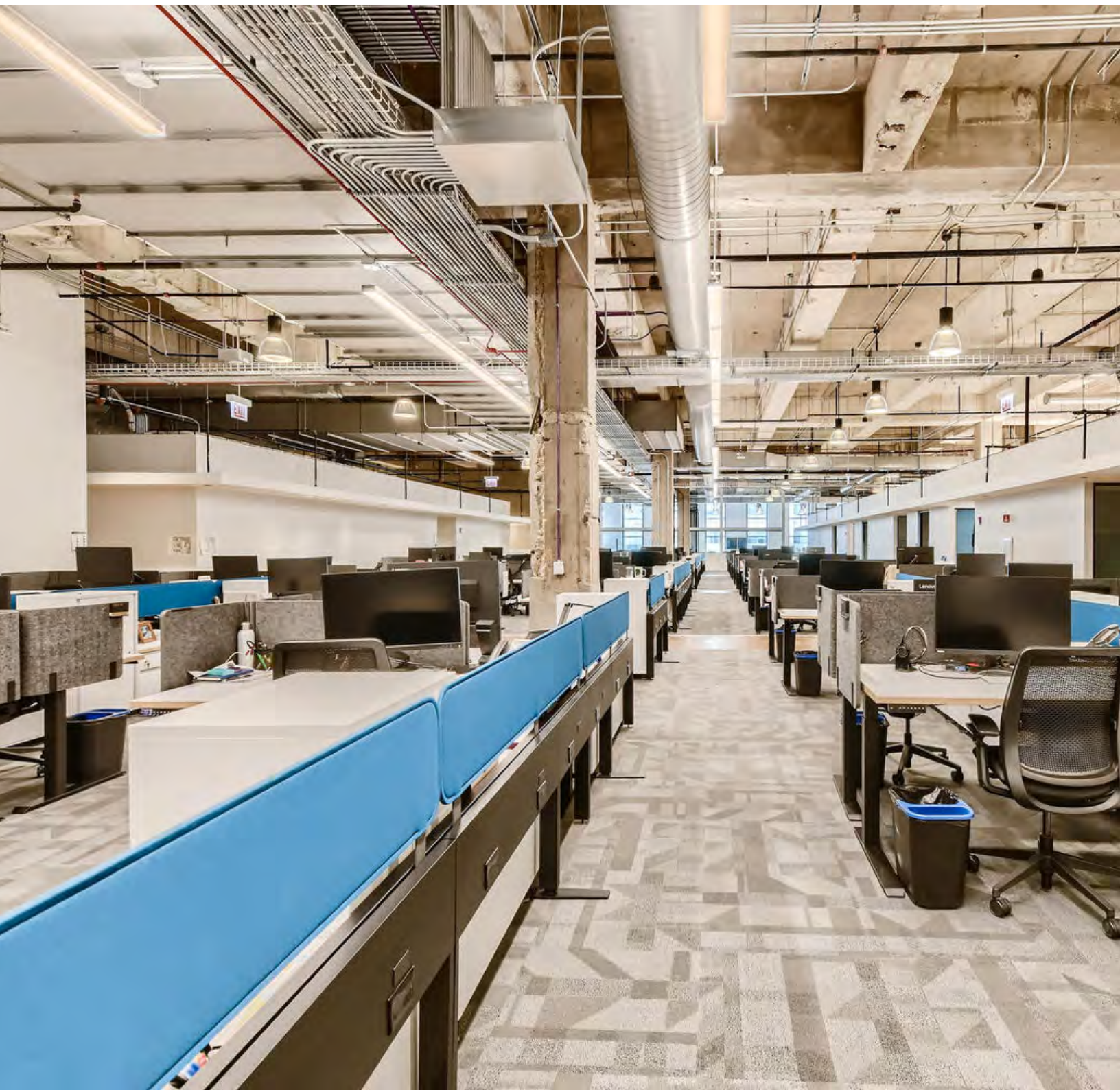
- 42,620 SF sublease
- Available through Feb. 28, 2035
- Plug-and-play
- Brand new construction
- 6th floor facing north
- Expansive city views
- Natural light throughout
- 26 offices
- 135 mechanical workstations
- 11 calling rooms
- Large open kitchen with east views
- 2 large 20+ person conference rooms
- 12 collaboration rooms (accommodate 6-15)
- 11 person IT/workroom
- Plenty of additional open air seating/workspace
- 5,000 SF of fully finished open space with north and west views
- 2nd elevator entrance



VIRTUAL TOUR

[Click here to see the full tour of the sublease space.](#)

Contact our brokers to schedule an in-person tour.





FLEXIBLE SPACES

TO WORK. TO COLLABORATE. TO INSPIRE. TO PLAN. TO CONNECT.



SUBLEASE FLOOR PLAN

SUITE 6N | 42,620 SF

26 offices

135 mechanical workstations

11 calling rooms

2 large 20+ person conference rooms

12 collaboration rooms (accommodate 6-15)

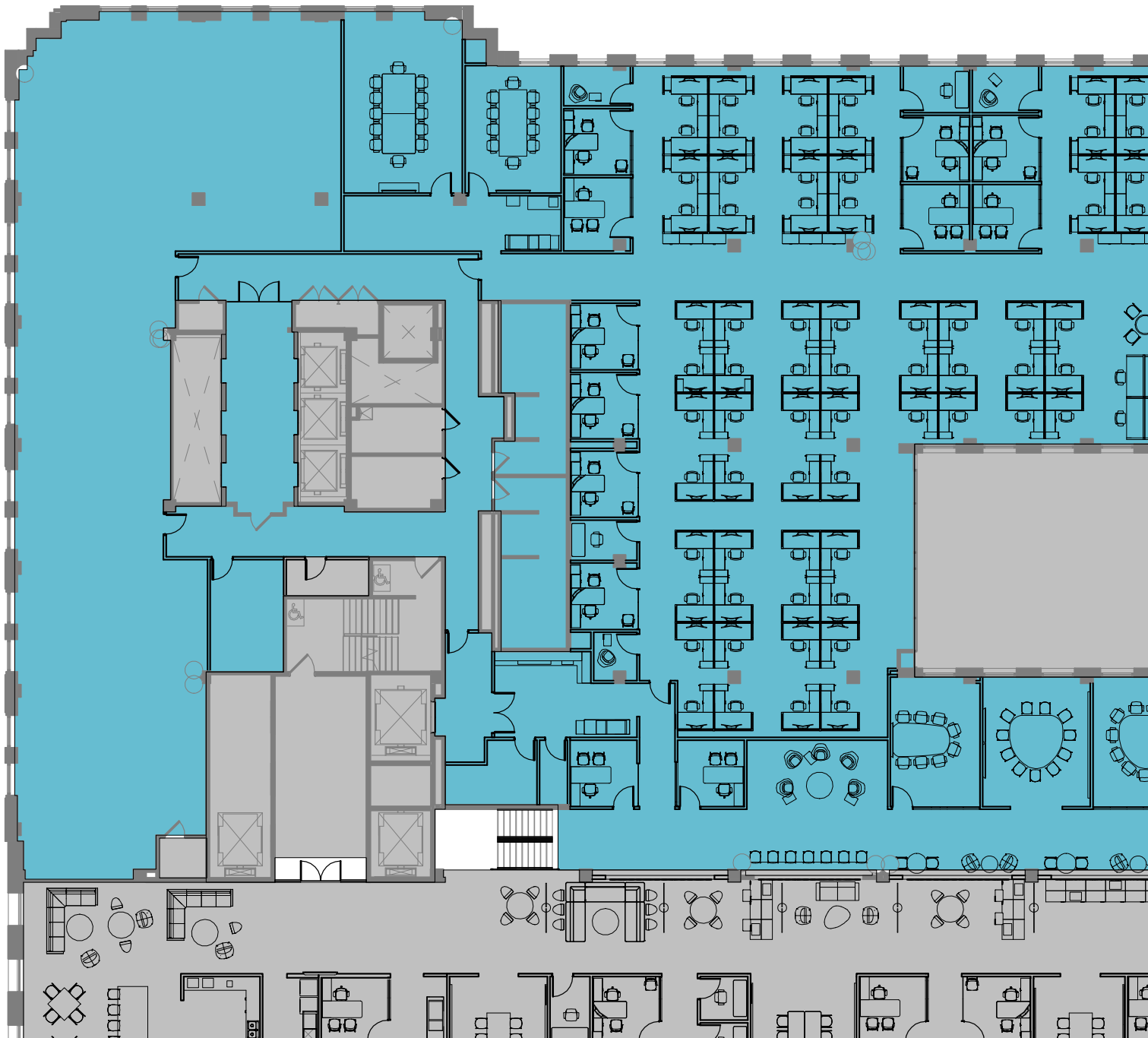
11 person IT/workroom

Large open kitchen with east views

Abundant additional open air seating/
workspace

5,000 SF of fully finished open space with
north and west views

Second elevator entrance





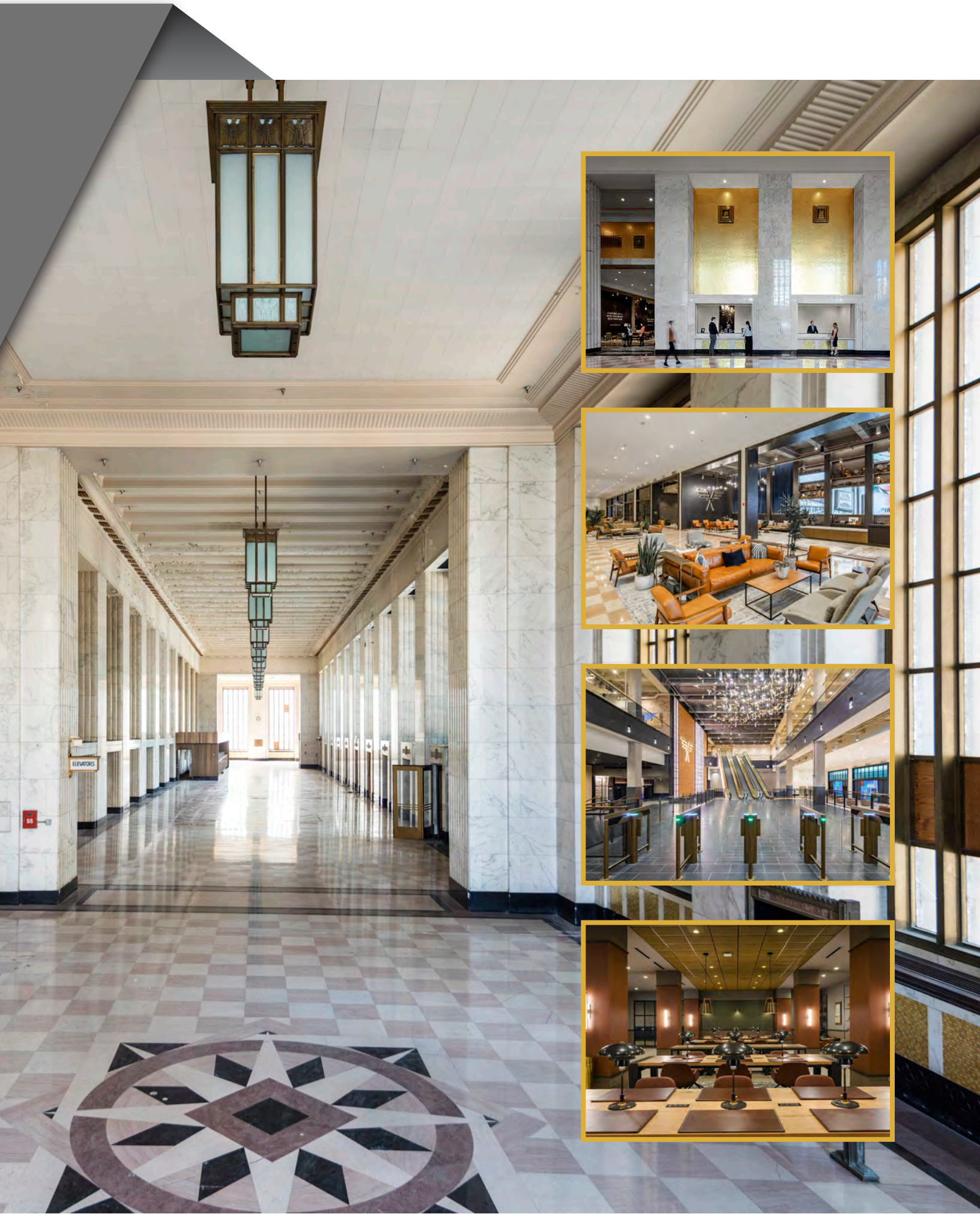
A LANDMARK REBORN

The Old Post Office is quintessential Chicago – honoring the past while advancing into the future.

Following a meticulous \$800 million restoration and conversion, the Old Post Office has built on its architectural roots when designed by Chicago’s legendary Graham, Anderson, Probst & White.

“The Old Post Office — an architectural sleeping giant — has finally stirred ... and is beginning to make what could be a seismic impact on downtown’s southwest edge.” - Blair Kamin, Chicago Tribune Architecture Critic





ALL-ACCESS AMENITIES

The sublease includes the same access to all 80,000 square feet of the building's singular tenant amenities – from the 3.5-acre rooftop park to the massive fitness center to the variety of lounges and event areas to the new exciting food hall which connects the building's indoor dining space to a large patio and the Riverwalk.

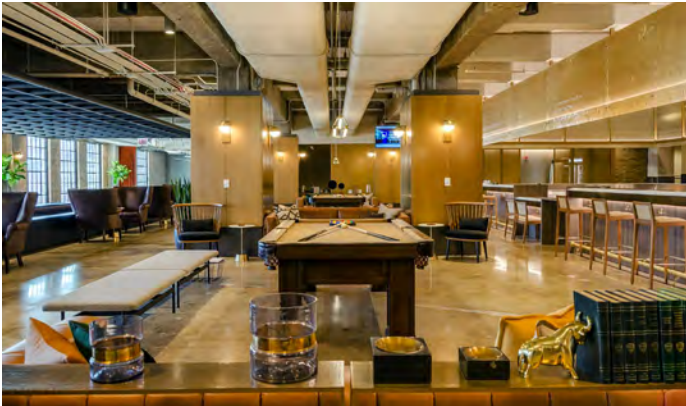
OUTDOOR PLAYGROUND & TRANQUIL OASIS.

The Meadow is a breathtaking 3.5-acre rooftop park including basketball courts, native plantings, a bistro and bar area, a running/walking track, and lush areas for tenants to meet, relax and work.



NEW FOOD HALL & DINING OPTIONS.

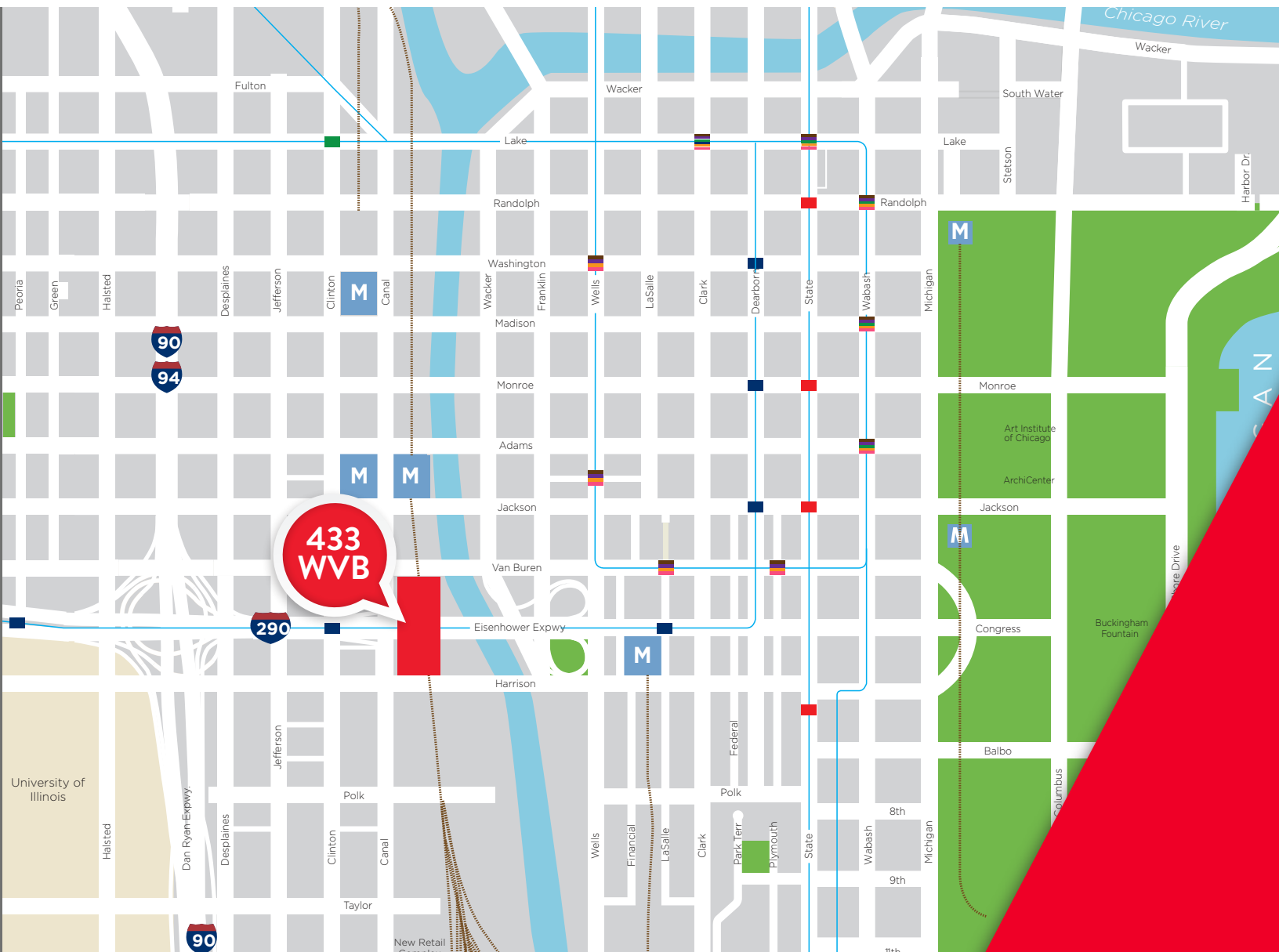
From Here On, a hip new food hall boasting 11 outstanding local food purveyors, spans 18,000 SF with an expansive 26,000 SF outdoor patio overlooking the Chicago River with Riverwalk connectivity in the works. Other luxurious food and beverage options include **The Vault**, a hidden speakeasy style bar, **The Meadow's** rooftop bar and bistro, and **Telegram**, a swanky bar with a bocce lane and pool tables.



FITNESS & WELLNESS.

Boxcar is a luxury wellness center with top-of-the-line equipment for exclusive use by building tenants. The 18,000 SF space offers Barre, Bootcamp, Boxing / Kickboxing, Circuit Training, Crossfit, Cycling, Dance, Meditation & Yoga, Nutrition Counseling, Pilates, and much more.





433
WVB

Chicago River

University of Illinois

90

290

M

M

M

M

M

M

M

M

M

M

M

M

M

M

M

M

M

Fulton

Wacker

South Water

Lake

Lake

Randolph

Randolph

Washington

Wacker

Michigan

Franklin

Wells

LaSalle

Clark

Dearborn

State

Wabash

Madison

Monroe

Adams

Jackson

Van Buren

Harrison

Eisenhower Expwy

Harrison

Harrison

Harrison

Harrison

Harrison

Harrison

Harrison

Harrison

Harrison

Harrison

Harrison

Harrison

Harrison

Harrison

Harrison

Harrison

Harrison

Harrison

Harrison

Harrison

Harrison

Harrison

Harrison

Harrison

Harrison

Harrison

Halsted

Dan Ryan Expwy

Desplaines

Jefferson

Clinton

Canal

Polk

Clinton

Canal

Wells

Financial

LaSalle

Clark

Park Terr

Plymouth

State

Wabash

8th

9th

Michigan

Columbus

Polk

Federal

Halsted

Dan Ryan Expwy

Desplaines

Jefferson

Clinton

Canal

Polk

Clinton

Canal

Wells

Financial

LaSalle

Clark

Park Terr

Plymouth

State

Wabash

8th

9th

Michigan

Columbus

Polk

Federal

Halsted

Dan Ryan Expwy

Desplaines

Jefferson

Clinton

Canal

Polk

Clinton

Canal

Wells

Financial

LaSalle

Clark

Park Terr

Plymouth

State

Wabash

8th

9th

Michigan

Columbus

Polk

Federal

Halsted

Dan Ryan Expwy

Desplaines

Jefferson

Clinton

Canal

Polk

Clinton

Canal

Wells

Financial

LaSalle

Clark

Park Terr

Plymouth

State

Wabash

8th

9th

Michigan

Columbus

Polk

Federal

Halsted

Dan Ryan Expwy

Desplaines

Jefferson

Clinton

Canal

Polk

Clinton

Canal

Wells

Financial

LaSalle

Clark

Park Terr

Plymouth

State

Wabash

8th

9th

Michigan

Columbus

Polk

Federal

Halsted

Dan Ryan Expwy

Desplaines

Jefferson

Clinton

Canal

Polk

Clinton

Canal

Wells

Financial

LaSalle

Clark

Park Terr

Plymouth

State

Wabash

8th

9th

Michigan

Columbus

Polk

Federal

Halsted

Dan Ryan Expwy

Desplaines

Jefferson

Clinton

Canal

Polk

Clinton

Canal

Wells

Financial

LaSalle

Clark

Park Terr

Plymouth

State

Wabash

8th

9th

Michigan

Columbus

Polk

Federal

Halsted

Dan Ryan Expwy

Desplaines

Jefferson

Clinton

Canal

Polk

Clinton

Canal

Wells

Financial

LaSalle

Clark

Park Terr

Plymouth

State

Wabash

8th

9th

Michigan

Columbus

Polk

Federal

Halsted

Dan Ryan Expwy

Desplaines

Jefferson

Clinton

Canal

Polk

Clinton

Canal

Wells

Financial

LaSalle

Clark

Park Terr

Plymouth

State

Wabash

8th

9th

Michigan

Columbus

Polk

Federal

Halsted

Dan Ryan Expwy

Desplaines

Jefferson

Clinton

Canal

Polk

Clinton

Canal

Wells

Financial

LaSalle

Clark

Park Terr

Plymouth

State

Wabash

8th

9th

Michigan

Columbus

Polk

Federal

Halsted

Dan Ryan Expwy

Desplaines

Jefferson

Clinton

Canal

Polk

Clinton

Canal

Wells

Financial

LaSalle

Clark

Park Terr

Plymouth

State

Wabash

8th

9th

Michigan

Columbus

Polk

Federal

Halsted

Dan Ryan Expwy

Desplaines

Jefferson

Clinton

Canal

Polk

Clinton

Canal

Wells

Financial

LaSalle

Clark

Park Terr

Plymouth

State

Wabash

8th

9th

Michigan

Columbus

Polk

Federal



THE NEIGHBORHOOD

The Old Post Office is a horizontal skyscraper comprised of 2.5 million square feet of tenants and can accommodate 11,000 employees.

Long a fixture at the south end of the Loop, the building has transformed into commercial hub anchoring the residential high-rises rising along the Chicago River's South Branch.

ACCESS POINTS

The building is easily accessible, within walking distance of:

- 3 downtown train stations
- A major CTA bus terminal
- CTA Blue Line station
- Numerous shared bike/scooter stations
- Directly connected to the Riverwalk & the Chicago River South Branch



SUBLEASE CONTACTS

JACK KEENAN

Vice Chair

+1 312 871 5014

jack.keenan@cushwake.com

JACK DEROCHE

Director

+1 312 229 4570

jack.deroche@cushwake.com

©2022 Cushman & Wakefield. All rights reserved. The information contained in this communication is strictly confidential. This information has been obtained from sources believed to be reliable but has not been verified. NO WARRANTY OR REPRESENTATION, EXPRESS OR IMPLIED, IS MADE AS TO THE CONDITION OF THE PROPERTY (OR PROPERTIES) REFERENCED HEREIN OR AS TO THE ACCURACY OR COMPLETENESS OF THE INFORMATION CONTAINED HEREIN, AND SAME IS SUBMITTED SUBJECT TO ERRORS, OMISSIONS, CHANGE OF PRICE, RENTAL OR OTHER CONDITIONS, WITHDRAWAL WITHOUT NOTICE, AND TO ANY SPECIAL LISTING CONDITIONS IMPOSED BY THE PROPERTY OWNER(S). ANY PROJECTIONS, OPINIONS OR ESTIMATES ARE SUBJECT TO UNCERTAINTY AND DO NOT SIGNIFY CURRENT OR FUTURE PROPERTY PERFORMANCE.