



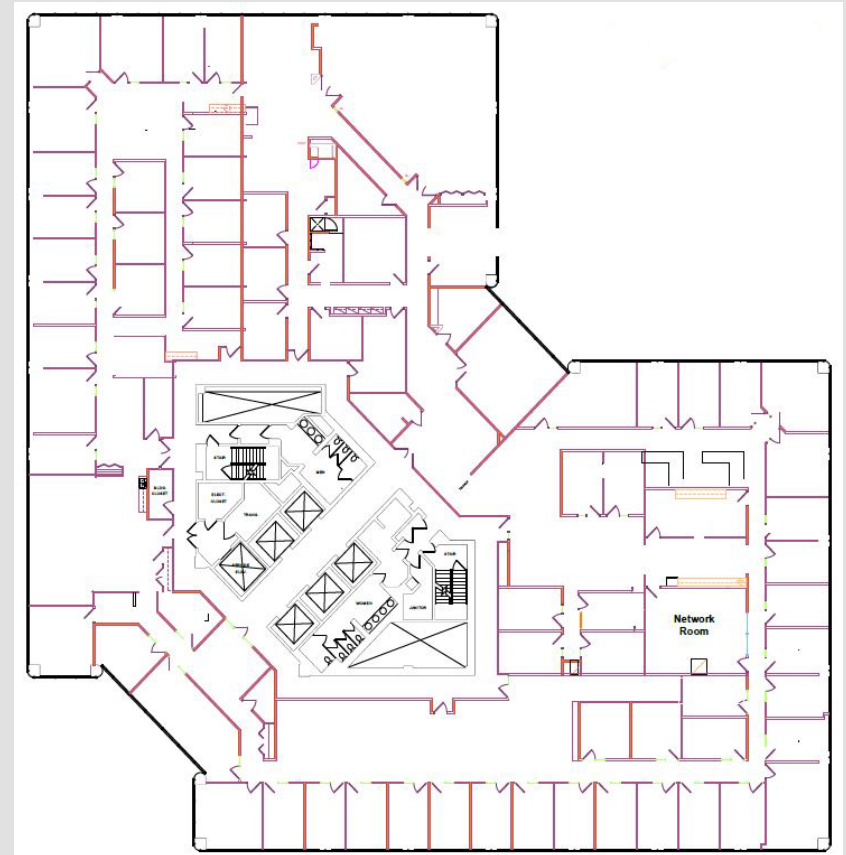
29,000 – 58,606 SF AVAILABLE

# O'HARE INTERNATIONAL CENTER

10255 W Higgins Rd, Rosemont, IL

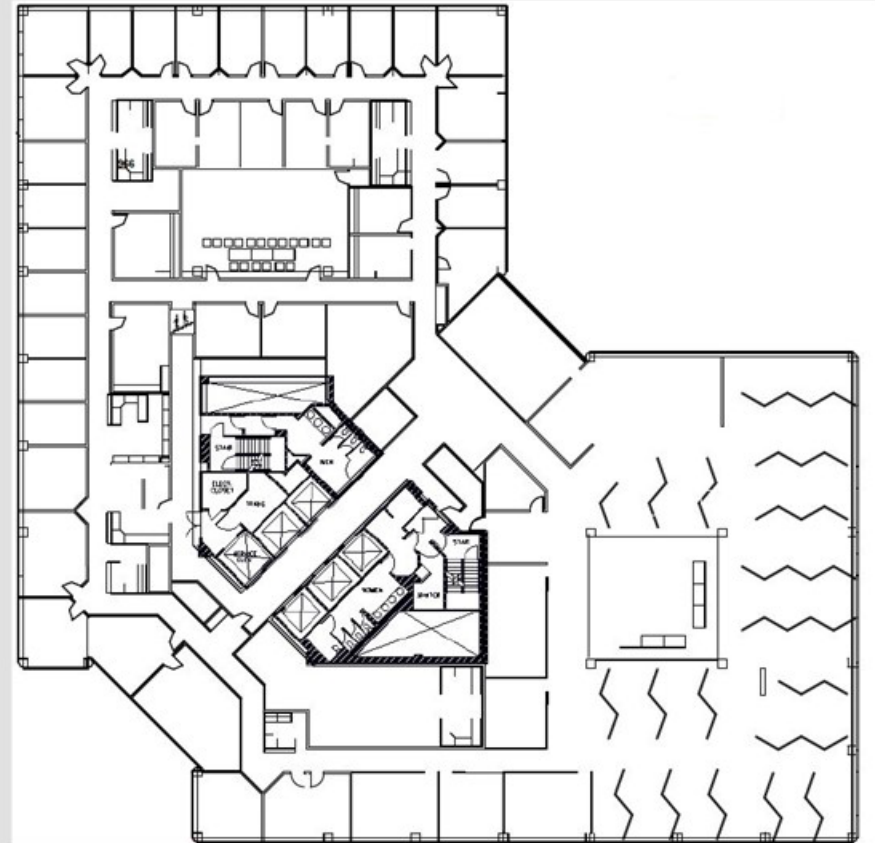
# 8<sup>TH</sup> FLOOR – 29,303 SF

- Fully Furnished
- Plug & Play
- Term Thru 12/31/2025
- Newley renovated Class A building amenities

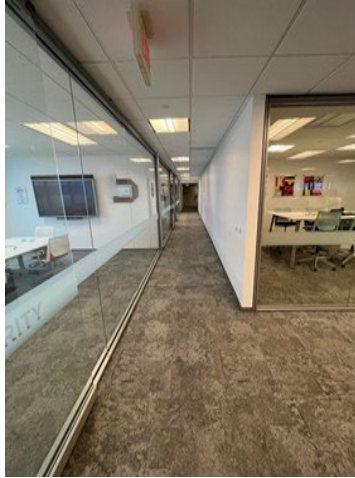


# 9<sup>TH</sup> FLOOR – 29,303 SF

- Fully Furnished
- Plug & Play
- Term Thru 12/31/2025
- Newley renovated Class A building amenities



# SPACE PHOTOS



# BUILDING AMENITIES



<https://www.ohareinternationalcenter.com/>



## Contact Info

**Brad Frank**

**Director**

**312.470.3837**

***Bradley.Frank@cushwake.com***

**Jordan Rovito**

**Managing Director**

**312.470.3839**

***Jordan.Rovito@cushwake.com***

225 W Wacker Drive

Suite 3000

Chicago, IL 60606

[cushmanwakefield.com](http://cushmanwakefield.com)

©2021 Cushman & Wakefield. All rights reserved. The information contained in this communication is strictly confidential. This information has been obtained from sources believed to be reliable but has not been verified. NO WARRANTY OR REPRESENTATION, EXPRESS OR IMPLIED, IS MADE AS TO THE CONDITION OF THE PROPERTY (OR PROPERTIES) REFERENCED HEREIN OR AS TO THE ACCURACY OR COMPLETENESS OF THE INFORMATION CONTAINED HEREIN, AND SAME IS SUBMITTED SUBJECT TO ERRORS, OMISSIONS, CHANGE OF PRICE, RENTAL OR OTHER CONDITIONS, WITHDRAWAL WITHOUT NOTICE, AND TO ANY SPECIAL LISTING CONDITIONS IMPOSED BY THE PROPERTY OWNER(S). ANY PROJECTIONS, OPINIONS OR ESTIMATES ARE SUBJECT TO UNCERTAINTY AND DO NOT SIGNIFY CURRENT OR FUTURE PROPERTY PERFORMANCE.