

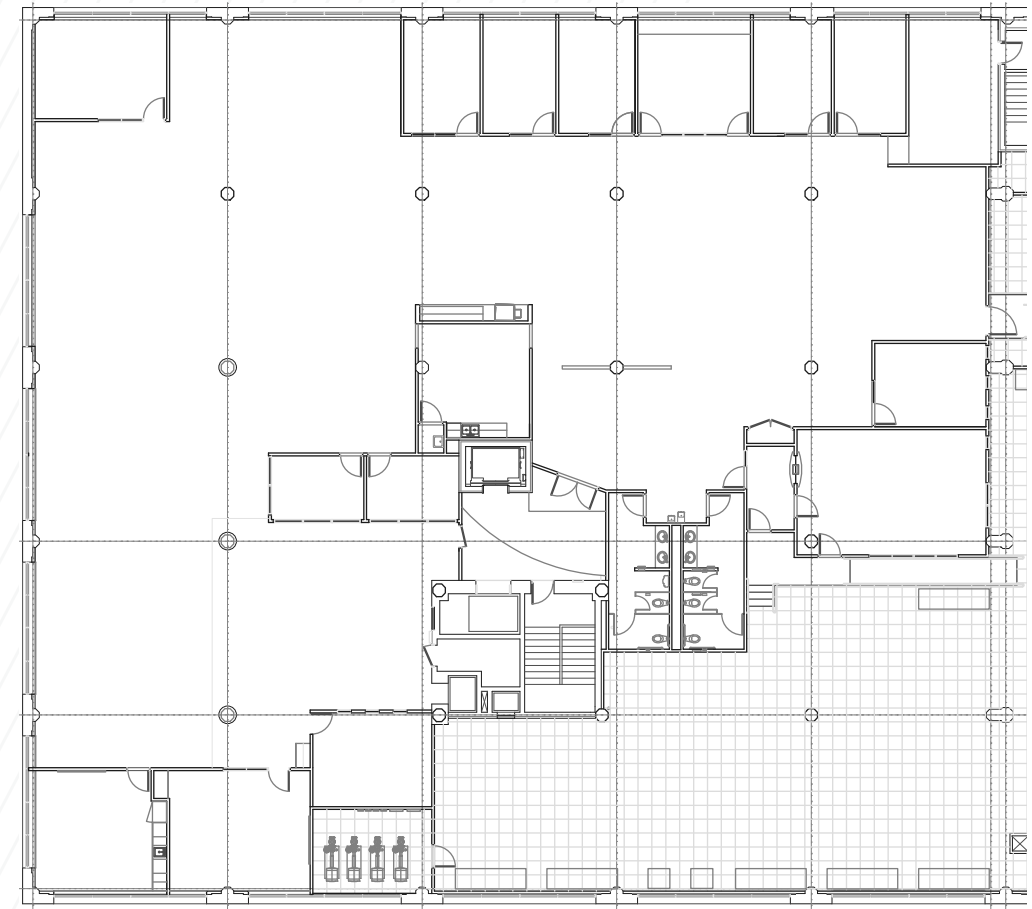
**CUSHMAN &
WAKEFIELD**

**FOR SUBLEASE
12,845 SF AVAILABLE**

BROADWAY STATION

900 SOUTH BROADWAY
DENVER, COLORADO 80209





Property Features

- Availability** Suite 400: 12,845 SF
- Configuration** 55 Workstations and 10 private offices
- Sublease Rate** Negotiable
- Furniture** Available
- Term** Through November 30, 2029
- Parking Ratio** 1.47 : 1,000 SF

Property Highlights

- A short, 5-minute walk to the Broadway Station light rail
- Newly remodeled building lobby and new exterior plaza
- Direct I-25 access
- Unobstructed mountain views

Suite 400
12,845 SF
55 Workstations | 10 Private Offices





STEVE BILLIGMEIER
Executive Managing Director
+1 303 813 6413
steve.billigmeier@cushwake.com

ROB BAIN
Director
+1 303 813 6452
rob.bain@cushwake.com

©2022 Cushman & Wakefield. All rights reserved. The information contained in this communication is strictly confidential. This information has been obtained from sources believed to be reliable but has not been verified. NO WARRANTY OR REPRESENTATION, EXPRESS OR IMPLIED, IS MADE AS TO THE CONDITION OF THE PROPERTY (OR PROPERTIES) REFERENCED HEREIN OR AS TO THE ACCURACY OR COMPLETENESS OF THE INFORMATION CONTAINED HEREIN, AND SAME IS SUBMITTED SUBJECT TO ERRORS, OMISSIONS, CHANGE OF PRICE, RENTAL OR OTHER CONDITIONS, WITHDRAWAL WITHOUT NOTICE, AND TO ANY SPECIAL LISTING CONDITIONS IMPOSED BY THE PROPERTY OWNER(S). ANY PROJECTIONS, OPINIONS OR ESTIMATES ARE SUBJECT TO UNCERTAINTY AND DO NOT SIGNIFY CURRENT OR FUTURE PROPERTY PERFORMANCE.

