



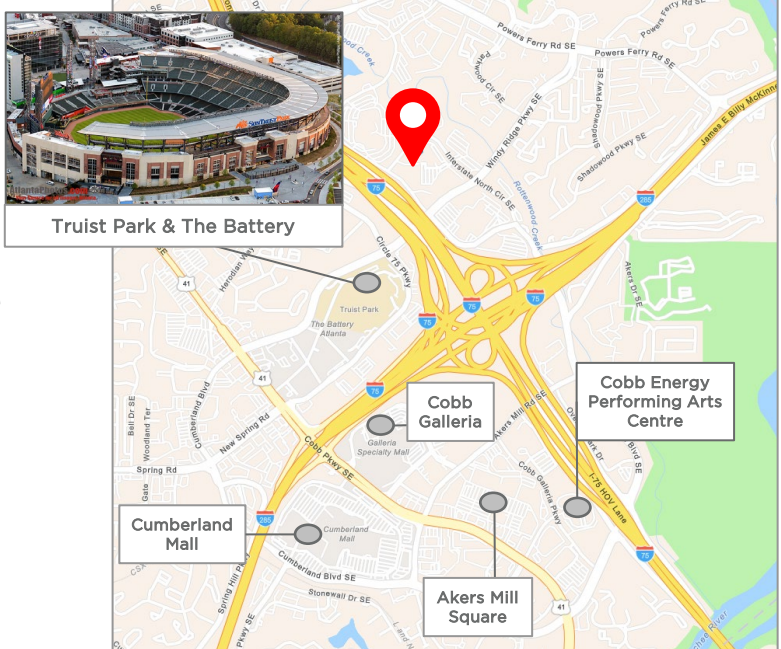
Pennant Park

210 Interstate N. Parkway
Atlanta, GA 30339



SPACE FEATURES & HIGHLIGHTS

- 15,818 RSF available immediately on 2nd Floor
- Below-market rental rate
- Furniture/equipment available
- Term through July 31, 2029; shorter term may be available
- Free covered parking
- Walking distance to The Battery/Truist Park
- Abundant nearby amenities include 30+ dining options, over 15 retail stores, 6 entertainment venues, 5 hotels, 2 bank branches and 1 fitness center



EXCELLENT SUBLEASE OPPORTUNITY



For more information, please contact:

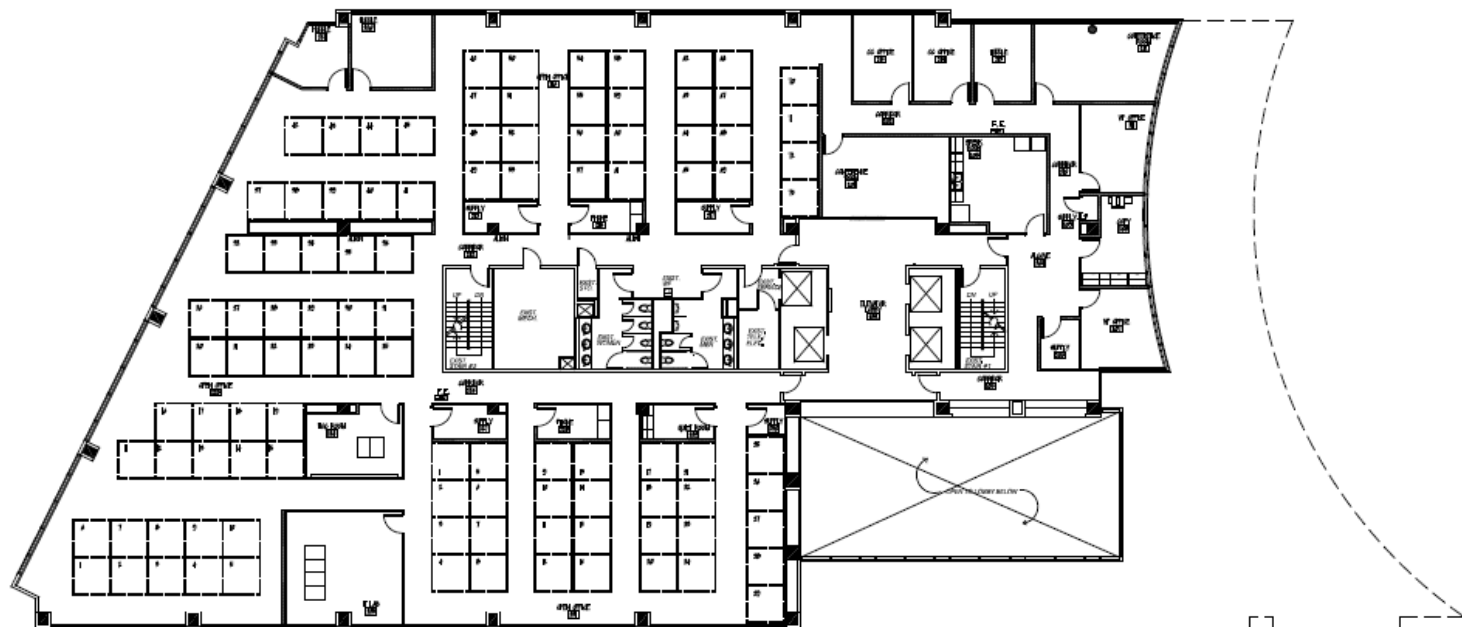
KIRK DIAMOND
 Tenant Advisory Group
 (404) 682 3407
 Kirk.diamond@cushwake.com

TIM FARLEY
 Tenant Advisory Group
 (404) 682 3409
 Tim.farley@cushwake.com

CUSHMAN & WAKEFIELD, INC.
 1180 Peachtree Street, NE, Suite 3100
 Atlanta, Georgia 30309
 www.cushmanwakefield.com

The depiction in the included photograph of any person, entity, sign, logo or property, other than Cushman & Wakefield's (C&W) client and the property offered by C&W, is incidental only, and is not intended to connote any affiliation, connection, association, sponsorship or approval by or between that which is incidentally depicted and C&W or its client. This listing shall not be deemed an offer to lease, sublease or sell such property; and, in the event of any transaction for such property, no commission shall be earned by or payable to any cooperating broker except if otherwise provided pursuant to the express terms, rates and conditions of C&W's agreement with its principal, if, as and when such commission (if any) is actually received from such principal. (A copy of the rates and conditions referred to above with respect to this property is available upon request.)

FLOOR PLAN - 2ND FLOOR 15,818 RSF



For more information, please contact:

KIRK DIAMOND
Tenant Advisory Group
(404) 682 3407
Kirk.diamond@cushwake.com

TIM FARLEY
Tenant Advisory Group
(404) 682 3409
Tim.farley@cushwake.com

CUSHMAN & WAKEFIELD, INC.
1180 Peachtree Street, NE, Suite 3100
Atlanta, Georgia 30309
www.cushmanwakefield.com

The depiction in the included photograph of any person, entity, sign, logo or property, other than Cushman & Wakefield's (C&W) client and the property offered by C&W, is incidental only, and is not intended to connote any affiliation, connection, association, sponsorship or approval by or between that which is incidentally depicted and C&W or its client. This listing shall not be deemed an offer to lease, sublease or sell such property; and, in the event of any transaction for such property, no commission shall be earned by or payable to any cooperating broker except if otherwise provided pursuant to the express terms, rates and conditions of C&W's agreement with its principal, if, as and when such commission (if any) is actually received from such principal. (A copy of the rates and conditions referred to above with respect to this property is available upon request.)