

FOR LEASE

Northwest Business Center

1351 B Capital Circle, Marietta, GA 30067

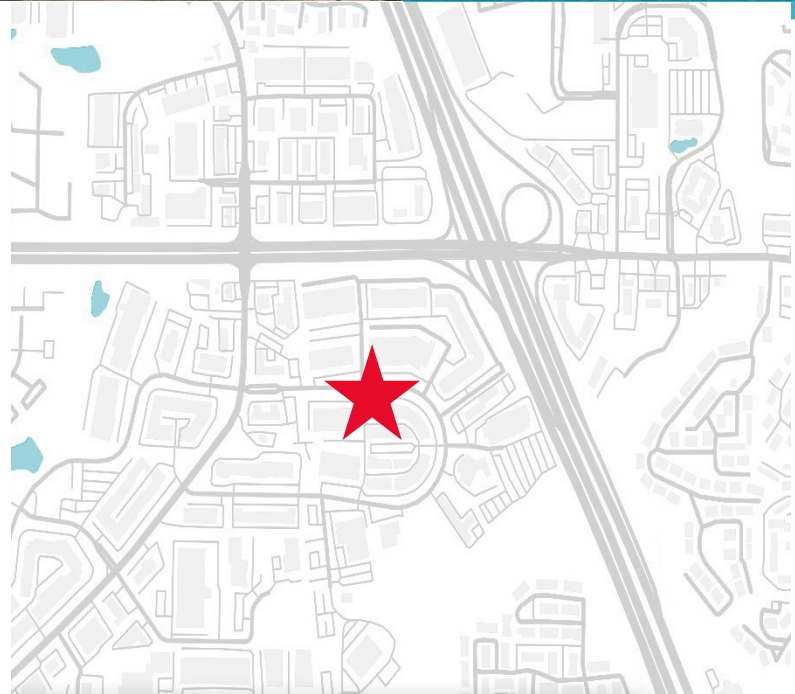


Suite B – 26,715 SF (Divisible)

PROPERTY HIGHLIGHTS

Northwest Business Center is a 470,971 square foot multi-tenant flex / industrial park located in the Northwest Industrial submarket of Atlanta, Georgia near I-75 and I-285. Built between 1982 and 1988, the property consists of 12 buildings on 34.4 acres of land.

- Within 25 miles from Hartsfield-Jackson Atlanta Intl.
- Near Dobbins Air Force Base
- Near Home Depot Headquarters
- Located in a Military Zone and the Gateway Marietta Community Improvement District (CID), eligible for Opportunity Zone Credits of up to \$17,500 per employee over a five-year period



For more information, contact:

Tara Healy

Director

+1 404 682 3430

tara.healy@cushwake.com

Andrew Thurman

Senior Associate

+1 404 682 3429

andrew.thurman@cushwake.com

Pat Murphy

Managing Director

+1 404 682 3405

pat.murphy@cushwake.com

Owned & managed by:

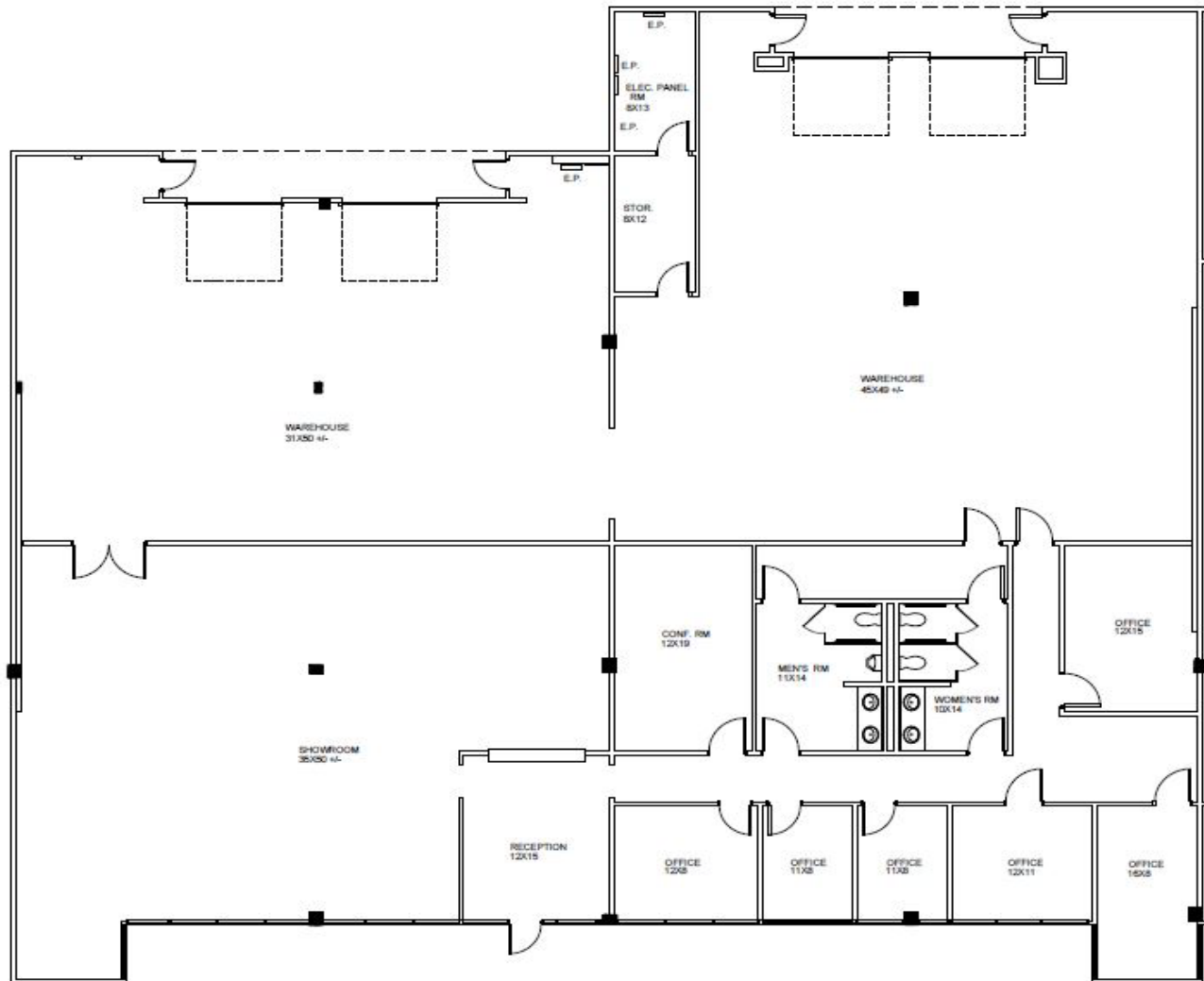
ARDEN | LOGISTICS
PARKS

FOR LEASE

Northwest Business Center
1351 Capital Circle, Marietta, GA 30067



Split One – 8,602 SF



For more information, contact:

Tara Healy
Director
+1 404 682 3430
tara.healy@cushwake.com

Andrew Thurman
Senior Associate
+1 404 682 3429
andrew.thurman@cushwake.com

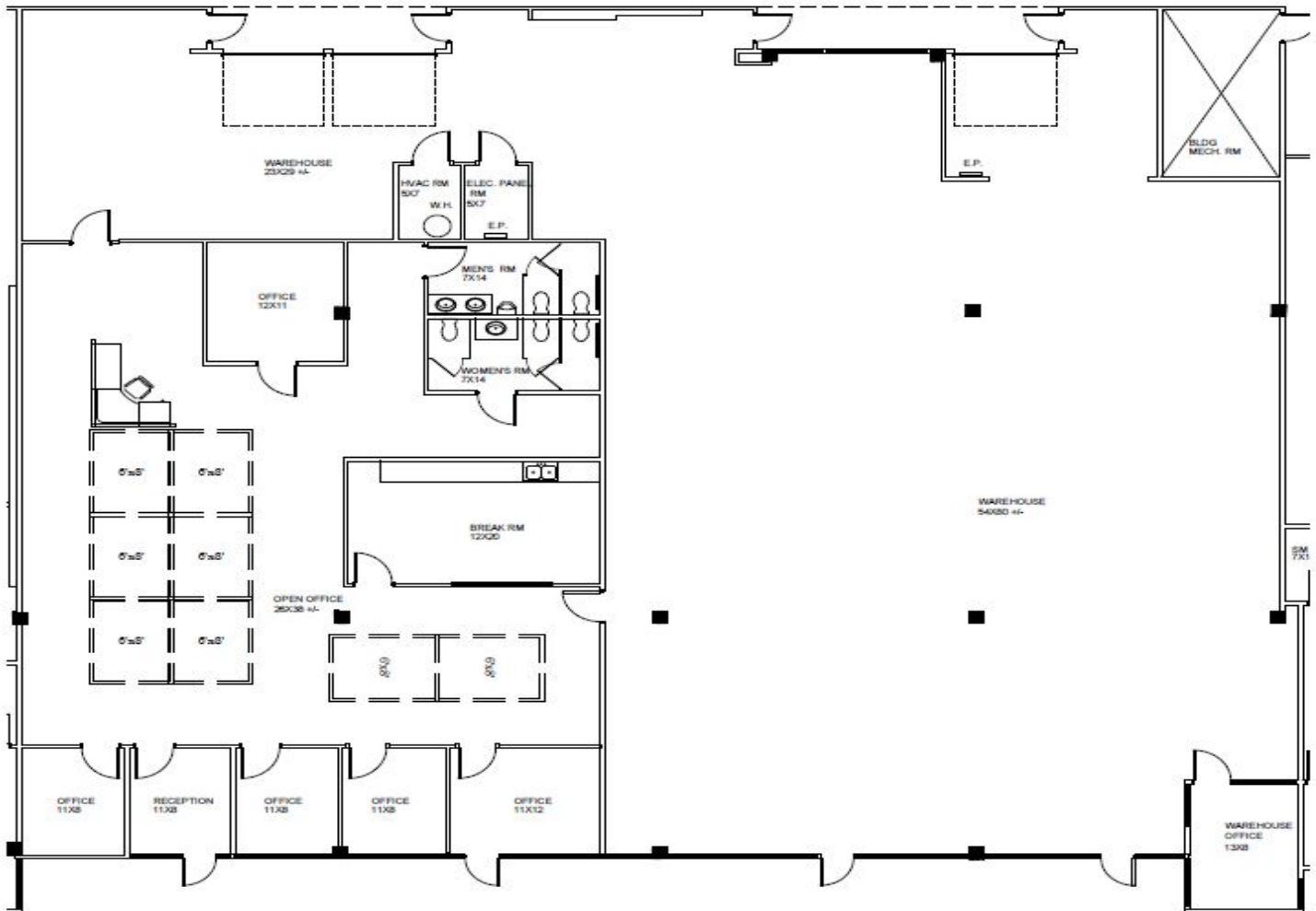
Pat Murphy
Managing Director
+1 404 682 3405
pat.murphy@cushwake.com

FOR LEASE

Northwest Business Center
1351 Capital Circle, Marietta, GA 30067



Split Two – 9,023 SF



For more information, contact:

Tara Healy
Director
+1 404 682 3430
tara.healy@cushwake.com

Andrew Thurman
Senior Associate
+1 404 682 3429
andrew.thurman@cushwake.com

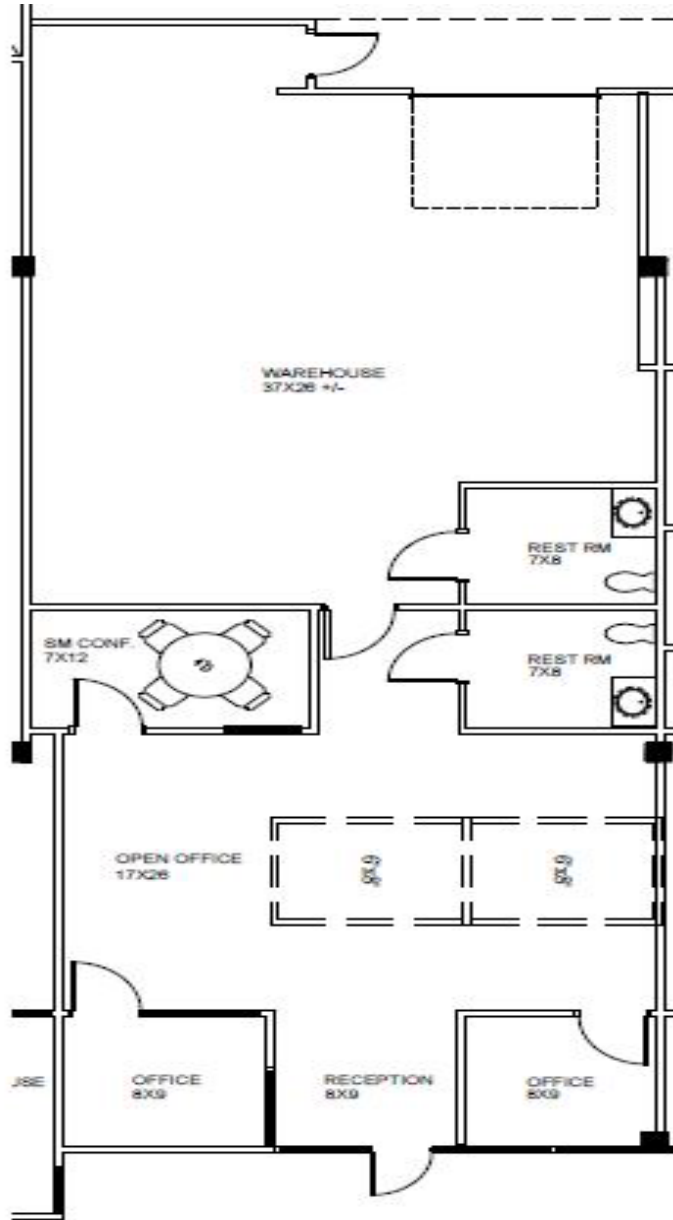
Pat Murphy
Managing Director
+1 404 682 3405
pat.murphy@cushwake.com

FOR LEASE

Northwest Business Center
1351 Capital Circle, Marietta, GA 30067



Split Three – 2,103 SF



For more information, contact:

Tara Healy
Director
+1 404 682 3430
tara.healy@cushwake.com

Andrew Thurman
Senior Associate
+1 404 682 3429
andrew.thurman@cushwake.com

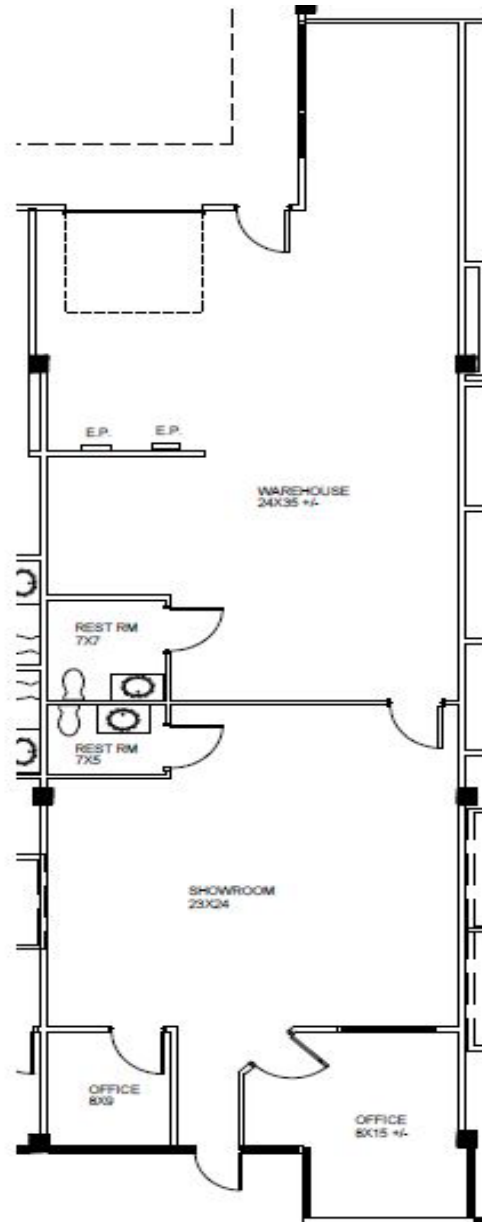
Pat Murphy
Managing Director
+1 404 682 3405
pat.murphy@cushwake.com

FOR LEASE

Northwest Business Center
1351 Capital Circle, Marietta, GA 30067



Split Four– 2,103 SF



For more information, contact:

Tara Healy
Director
+1 404 682 3430
tara.healy@cushwake.com

Andrew Thurman
Senior Associate
+1 404 682 3429
andrew.thurman@cushwake.com

Pat Murphy
Managing Director
+1 404 682 3405
pat.murphy@cushwake.com

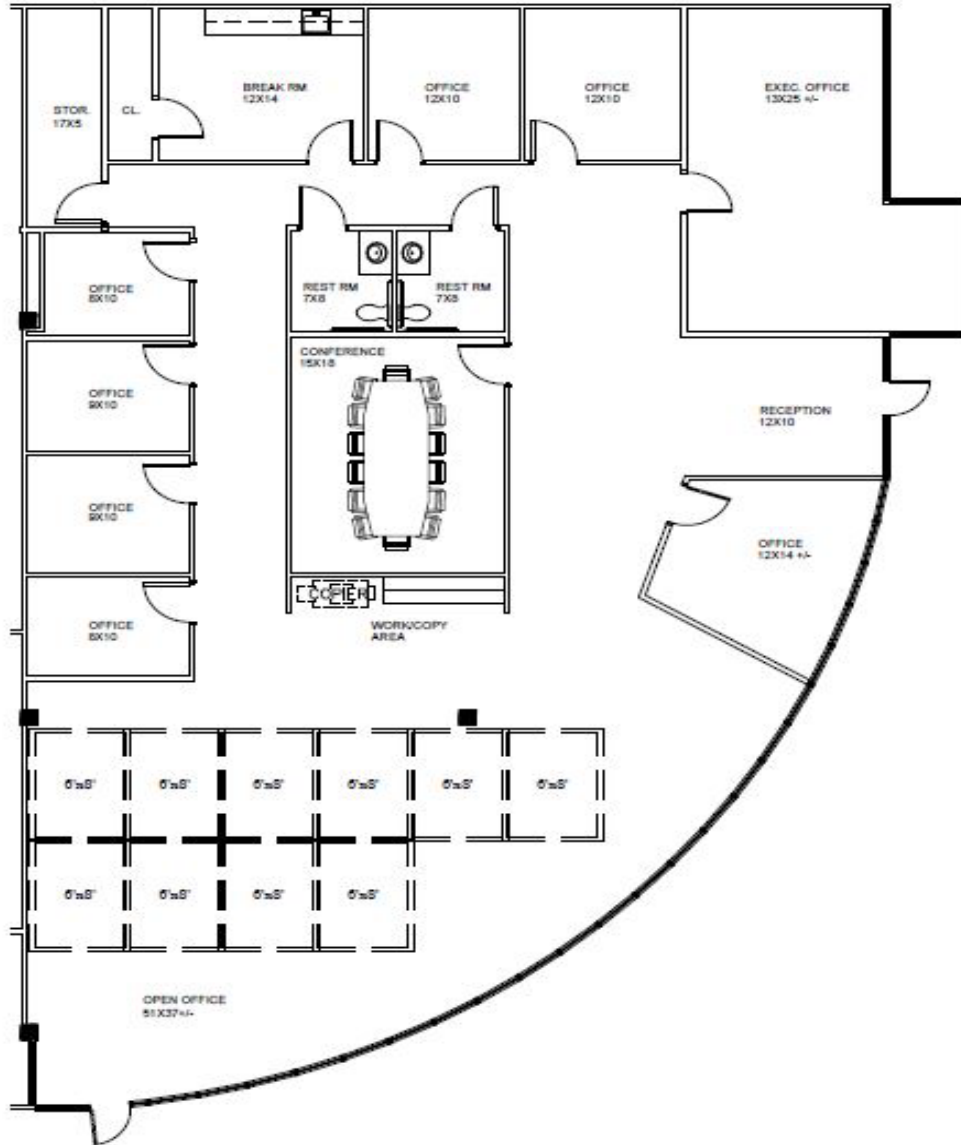
FOR LEASE

Northwest Business Center

1351 Capital Circle, Marietta, GA 30067



Split Five – 4,884 SF



For more information, contact:

Tara Healy

Director

+1 404 682 3430

tara.healy@cushwake.com

Andrew Thurman

Senior Associate

+1 404 682 3429

andrew.thurman@cushwake.com

Pat Murphy

Managing Director

+1 404 682 3405

pat.murphy@cushwake.com