



**FOR LEASE**



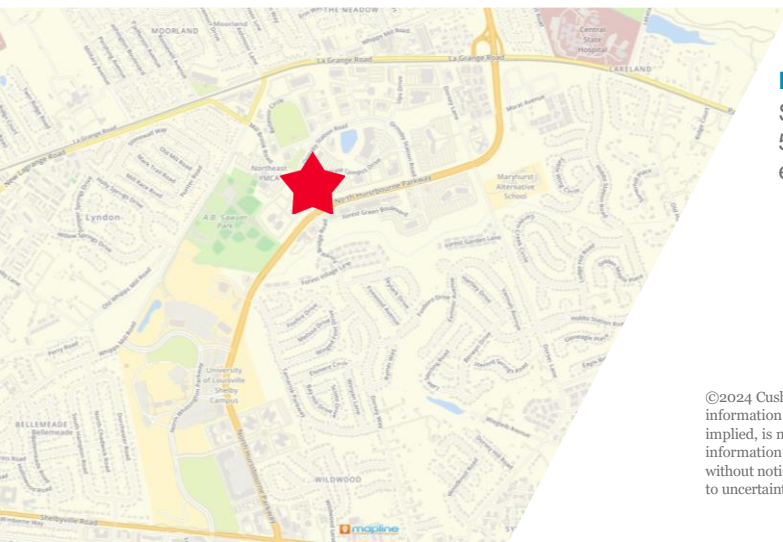
# 9900 CORPORATE CAMPUS DRIVE

Louisville, KY 40223

**SUITES FROM 8,389 SF TO 12,026 SF AVAILABLE**

## PROPERTY FEATURES

- Conveniently located in the North Hurstbourne Corridor within minutes from I-64, I-264 and I-265
- Located in a professional office campus
- Close proximity to dining, hotels, retail and services
- Includes courtyard area between 9900 and 9920 Corporate Campus Drive



### E.P. SCHERER

Senior Director  
502 589 5150 ext. 234  
epscherer@commercialkentucky.com

### SAM GRAY

Senior Associate  
502 589 5150 ext. 240  
samgray@commercialkentucky.com

333 E. Main Street, Suite 510 | Louisville, KY 40202  
+ 1 502 589 5150  
www.commercialkentucky.com

©2024 Cushman & Wakefield. All rights reserved. The information contained in this communication is strictly confidential. This information has been obtained from sources believed to be reliable but has not been verified. No warranty or representation, express or implied, is made as to the condition of the property (or properties) referenced herein or as to the accuracy or completeness of the information contained herein, and same is submitted subject to errors, omissions, change of price, rental or other conditions, withdrawal without notice, and to any special listing conditions imposed by the property owner(s). Any projections, opinions or estimates are subject to uncertainty and do not signify current or future property performance.

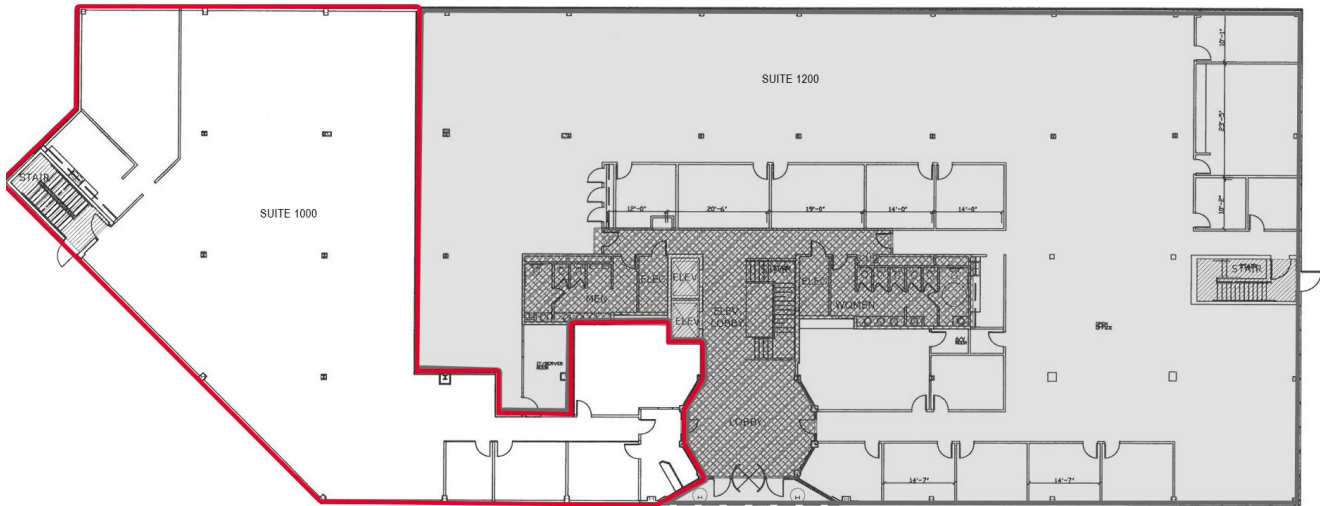
# 9900 CORPORATE CAMPUS DRIVE

Louisville, KY 40223

**SUITES FROM 8,389 SF TO 12,026 SF  
AVAILABLE**



## FLOOR PLAN



### Suite 1000

**E.P. SCHERER**  
Senior Director  
502 589 5150 ext. 234  
epscherer@commercialkentucky.com

**SAM GRAY**  
Senior Associate  
502 589 5150 ext. 240  
samgray@commercialkentucky.com

333 E. Main Street, Suite 510,  
Louisville, KY 40202  
Main +1 502 589 5150  
www.commercialkentucky.com

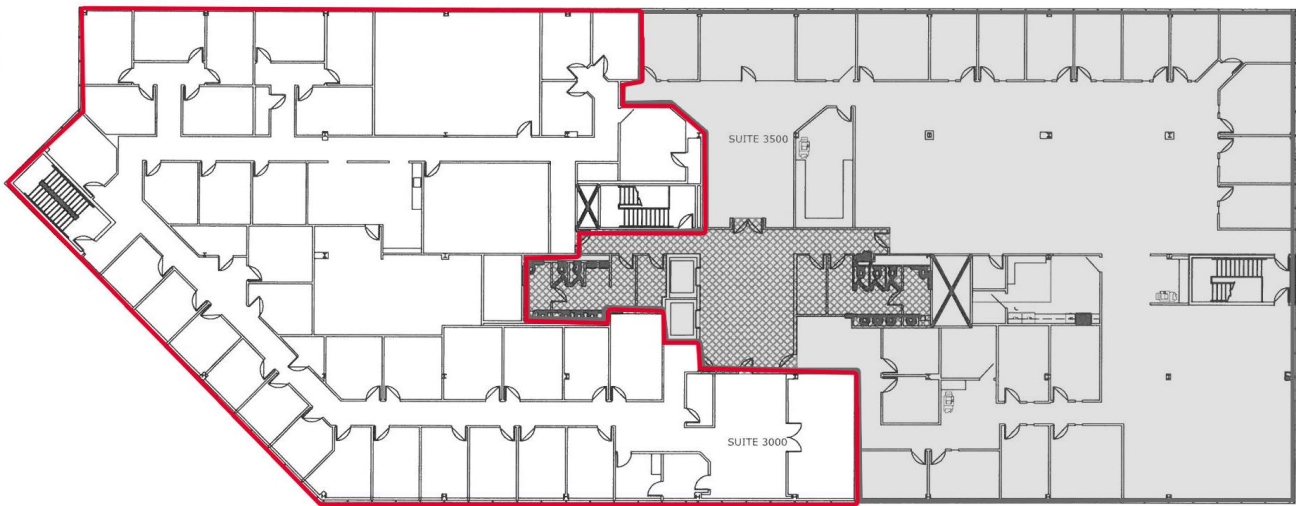
# 9900 CORPORATE CAMPUS DRIVE

Louisville, KY 40223

**SUITES FROM 8,389 SF TO 12,026 SF  
AVAILABLE**



## FLOOR PLAN



### Suite 3000

**E.P. SCHERER**

Senior Director  
502 589 5150 ext. 234  
epscherer@commercialkentucky.com

**SAM GRAY**

Senior Associate  
502 589 5150 ext. 240  
samgray@commercialkentucky.com

333 E. Main Street, Suite 510,  
Louisville, KY 40202  
Main +1 502 589 5150  
www.commercialkentucky.com

# 9900 CORPORATE CAMPUS DRIVE

Louisville, KY 40223

**SUITES FROM 8,389 SF TO 12,026 SF  
AVAILABLE**



## AERIAL/LOCATION MAP



**E.P. SCHERER**  
Senior Director  
502 589 5150 ext. 234  
epscherer@commercialkentucky.com

**SAM GRAY**  
Senior Associate  
502 589 5150 ext. 240  
samgray@commercialkentucky.com

333 E. Main Street, Suite 510,  
Louisville, KY 40202  
Main +1 502 589 5150  
www.commercialkentucky.com