

OFFICE FOR LEASE



400 E Main Street, Suite 101

Louisville, KY 40202

1,070 SF

PROPERTY HIGHLIGHTS

- Highly visible downtown corner of Preston and Main Streets
- Across the street from Slugger Field
- Walking distance to NULU and Waterfront Park
- Includes one parking space in private lot



E.P. SCHERER

Senior Director
+1 502 589 5150 ext. 234
epscherer@commercialkentucky.com

333 E Main Street, Suite 510
Louisville, KY 40202
Main +1 502 589 5150
www.Commercialkentucky.com

©2022 Cushman & Wakefield. All rights reserved. The information contained in this communication is strictly confidential. This information has been obtained from sources believed to be reliable but has not been verified. No warranty or representation, express or implied, is made as to the condition of the property (or properties) referenced herein or as to the accuracy or completeness of the information contained herein, and same is submitted subject to errors, omissions, change of price, rental or other conditions, withdrawal without notice, and to any special listing conditions imposed by the property owner(s). Any projections, opinions or estimates are subject to uncertainty and do not signify current or future property performance.

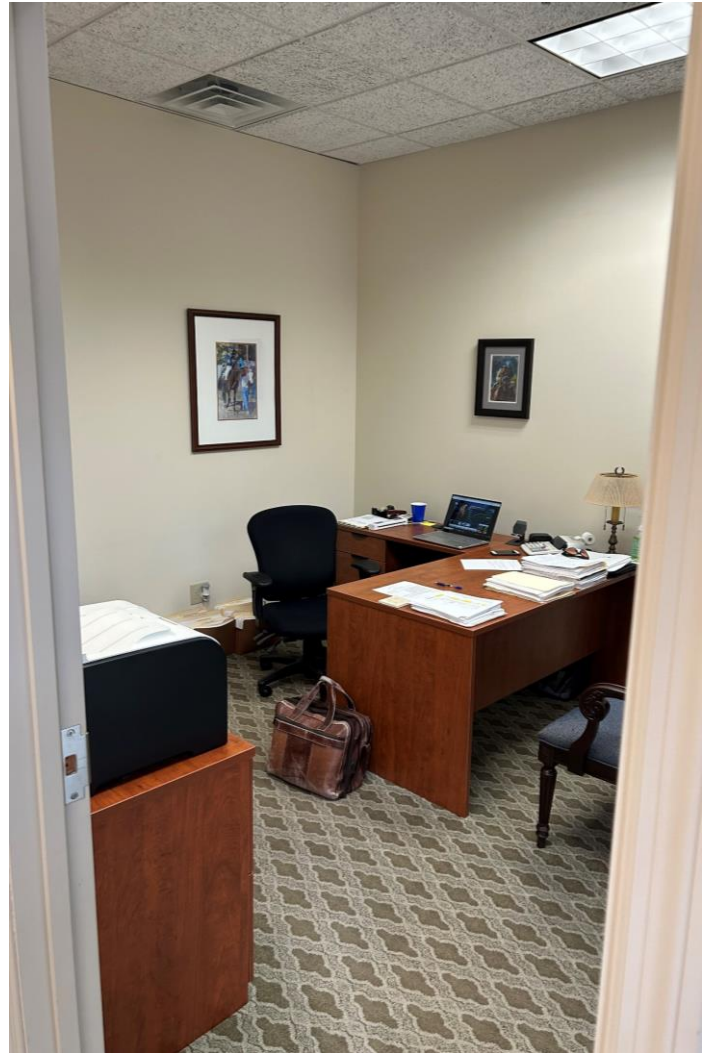
400 E Main Street, Suite 101

Louisville, KY 40202

OFFICE FOR LEASE
1,070 SF



AREA MAP



E.P. SCHERER
Senior Director
+1 502 589 5150 ext. 234
epscherer@commercialkentucky.com

333 E Main Street, Suite 510
Louisville, KY 40202
Main +1 502 589 5150
www.Commercialkentucky.com

400 E Main Street, Suite 101

Louisville, KY 40202

OFFICE FOR LEASE
1,070 SF



AREA MAP



E.P. SCHERER

Senior Director
+1 502 589 5150 ext. 234
epscherer@commercialkentucky.com

333 E Main Street, Suite 510
Louisville, KY 40202
Main +1 502 589 5150
www.Commercialkentucky.com

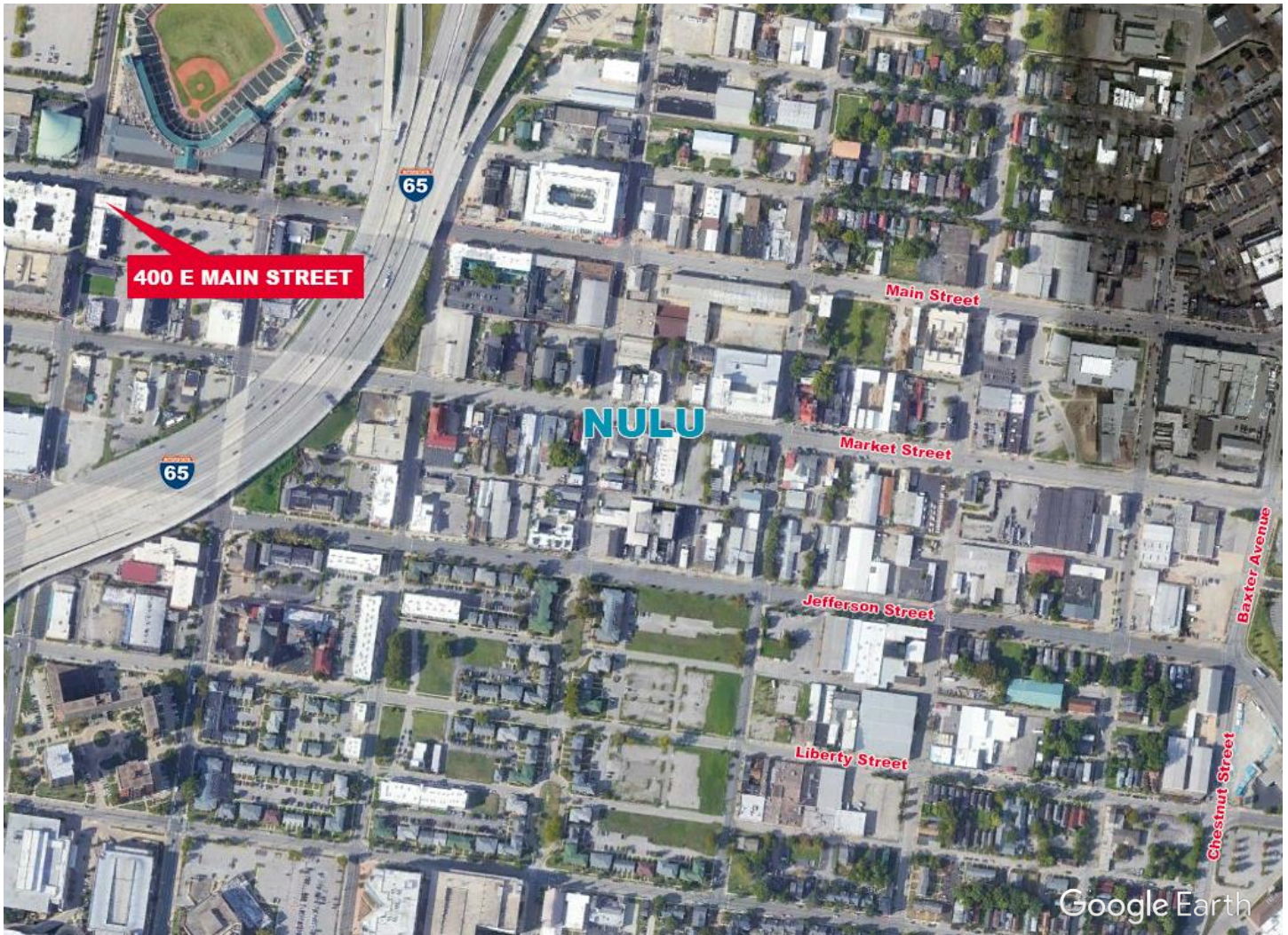
400 E Main Street, Suite 101

Louisville, KY 40202

OFFICE FOR LEASE
1,070 SF



AREA MAP



E.P. SCHERER
Senior Director
+1 502 589 5150 ext. 234
epscherer@commercialkentucky.com

333 E Main Street, Suite 510
Louisville, KY 40202
Main +1 502 589 5150
www.Commercialkentucky.com