

# NORTHPARK BUSINESS CENTER XIII

XXX XYLON AVE N  
BROOKLYN PARK, MN 55445



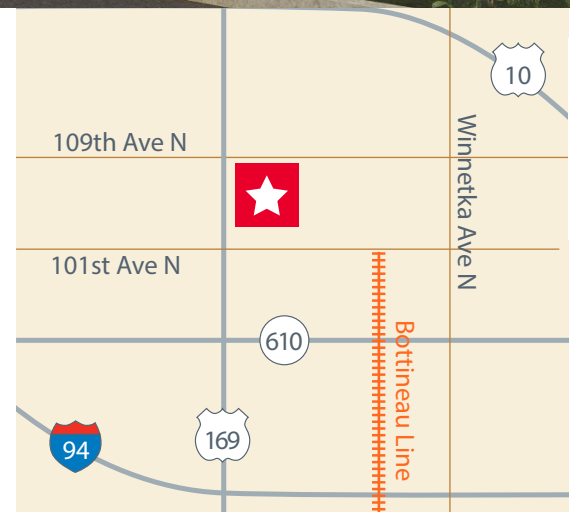
NORTHPARK  
BUSINESS CENTER

BE WHAT'S NEXT



## AVAILABLE SPRING 2024

- 20,800 - 210,000 SF available
- Easy access to Highway 169, 610 and Interstate 94
- Rare 28' clear opportunity in Brooklyn Park
- Tremendous visibility on Highway 169 (over 40,000 vehicles/day)
- Abundant glass line
- Efficient tilt-up construction
- ESFR sprinkler system
- Millions of square feet of retail amenities nearby
- Build-to-suit and other multi-tenant options also available at the up-and-coming 3 million square foot NorthPark Business Center



For leasing information, please contact:

Charlie Merwin  
Senior Director  
+1 612 347 9346  
charlie.merwin@cushwake.com

Jon Yanta, SIOR, CCIM  
Executive Director  
+1 952 820 8734  
jon.yanta@cushwake.com

Clint Moe  
Associate  
+1 612 347 9348  
clint.moe@cushwake.com

LEASED BY



DEVELOPED BY





# NORTHPARK BUSINESS CENTER XIII

XXX XYLON AVE N  
BROOKLYN PARK, MN 55445



NORTHPARK  
BUSINESS CENTER

BE WHAT'S NEXT

## NEIGHBORING BUSINESSES



For leasing information, please contact:

Charlie Merwin  
Senior Director  
+1 612 347 9346  
charlie.merwin@cushwake.com

Jon Yanta, SIOR, CCIM  
Executive Director  
+1 952 820 8734  
jon.yanta@cushwake.com

Clint Moe  
Associate  
+1 612 347 9348  
clint.moe@cushwake.com

LEASED BY



DEVELOPED BY





# NORTHPARK BUSINESS CENTER XIII

XXX XYLON AVE N  
BROOKLYN PARK, MN 55445



NORTHPARK  
BUSINESS CENTER

BE WHAT'S NEXT

## NEAR BY RETAIL AND WALKING TRAILS



For leasing information, please contact:

Charlie Merwin  
Senior Director  
+1 612 347 9346  
charlie.merwin@cushwake.com

Jon Yanta, SIOR, CCIM  
Executive Director  
+1 952 820 8734  
jon.yanta@cushwake.com

Clint Moe  
Associate  
+1 612 347 9348  
clint.moe@cushwake.com

LEASED BY

DEVELOPED BY





# NORTHPARK BUSINESS CENTER XIII

XXX XYLON AVE N  
BROOKLYN PARK, MN 55445



NORTHPARK  
BUSINESS CENTER

BE WHAT'S NEXT

Total Building Square Footage	210,000 SF
Square Footage Available	210,000 SF
Office	BTS
Warehouse	210,000 SF
Minimum Divisible	20,400 SF
Bay Size	10,400 SF
Lease Rate	Negotiable
2024 CAM & Taxes	\$.93 PSF
Dock High Doors	26 (more can be added)
Drive - In Doors	2 (more can be added)
Column Spacing	50'x50' with 60' speed bay (210' building depth)
Clear Height	28' clear
Parking Ratio	1.35/1,000 SF (173 spaces total)
Trailer Parking Stalls	None
Sprinkler System	ESFR
Comments	NorthPark is a 230 acre premier business park development planned with terrific access and visibility to highly traveled infrastructure. The park is also in close proximity to major retail amenities and the fastest growing labor force in the Twin Cities. View our website at <a href="http://npbusinesscenter.com">http://npbusinesscenter.com</a> .



For leasing information, please contact:

Charlie Merwin  
Senior Director  
+1 612 347 9346  
charlie.merwin@cushwake.com

Jon Yanta, SIOR, CCIM  
Executive Director  
+1 952 820 8734  
jon.yanta@cushwake.com

Clint Moe  
Associate  
+1 612 347 9348  
clint.moe@cushwake.com

LEASED BY



DEVELOPED BY



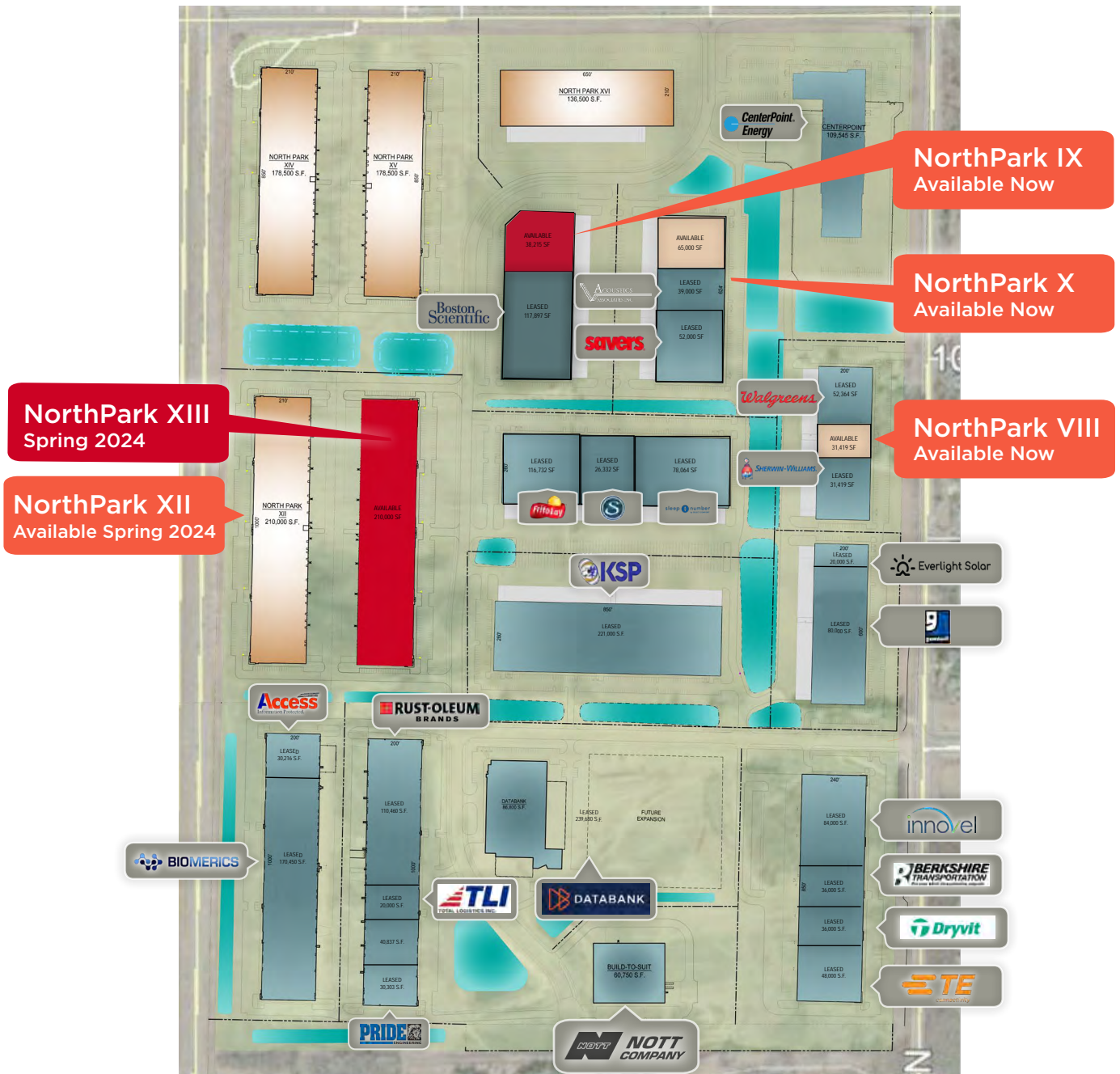
# NORTHPARK BUSINESS CENTER XIII

XXX XYLON AVE N  
BROOKLYN PARK, MN 55445



NORTHPARK  
BUSINESS CENTER

BE WHAT'S NEXT



For leasing information, please contact:

Charlie Merwin  
Senior Director  
+1 612 347 9346  
charlie.merwin@cushwake.com

Jon Yanta, SIOR, CCIM  
Executive Director  
+1 952 820 8734  
jon.yanta@cushwake.com

Clint Moe  
Associate  
+1 612 347 9348  
clint.moe@cushwake.com

LEASED BY



DEVELOPED BY



# NORTHPARK BUSINESS CENTER XIII

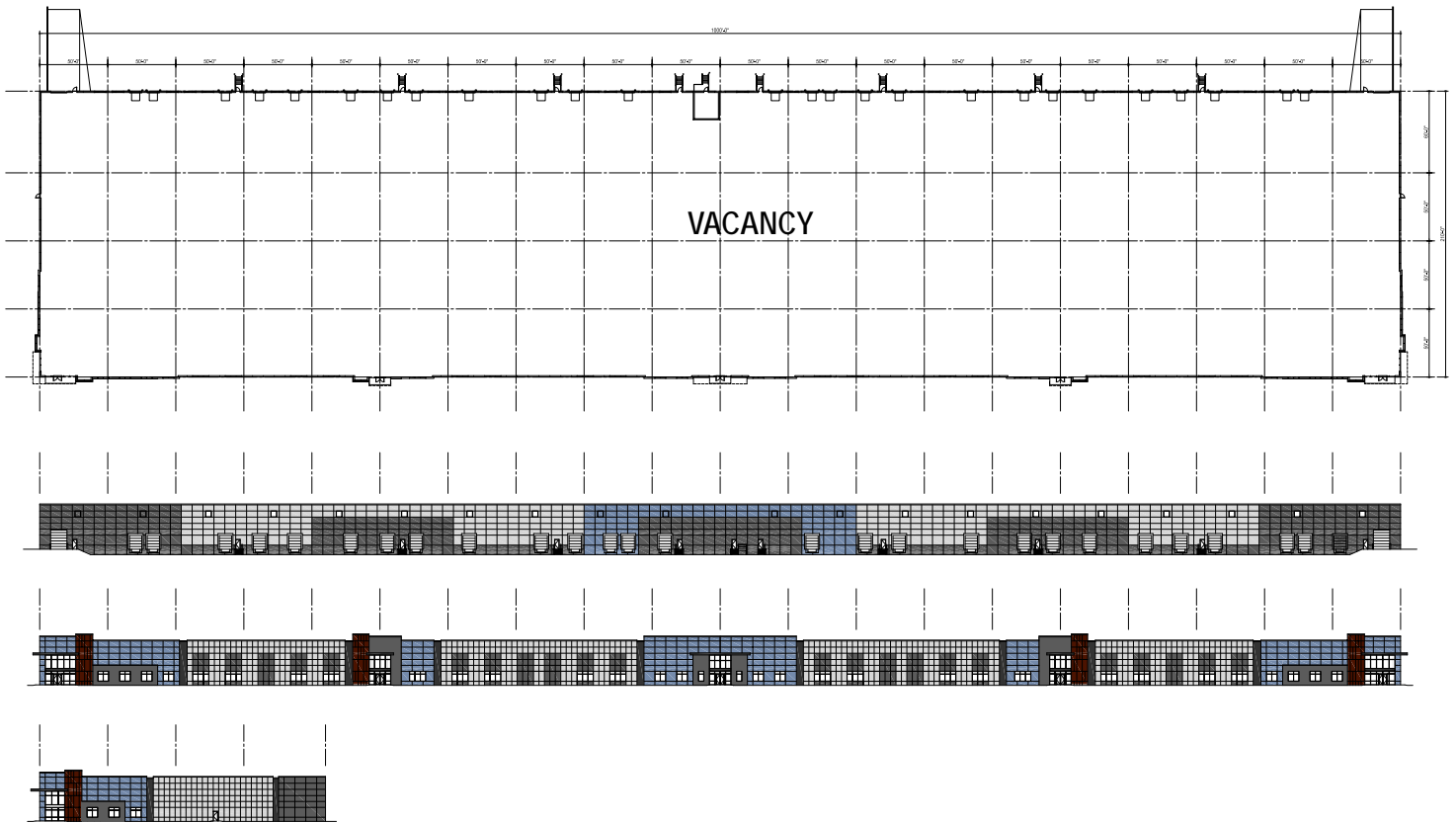
XXX XYLON AVE N

BROOKLYN PARK, MN 55445



NORTHPARK  
BUSINESS CENTER

BE WHAT'S NEXT



For leasing information, please contact:

Charlie Merwin  
Senior Director  
+1 612 347 9346  
charlie.merwin@cushwake.com

Jon Yanta, SIOR, CCIM  
Executive Director  
+1 952 820 8734  
jon.yanta@cushwake.com

Clint Moe  
Associate  
+1 612 347 9348  
clint.moe@cushwake.com

LEASED BY



DEVELOPED BY

