



CUSHMAN & WAKEFIELD

savills.us

SUBLEASE

# SANTANA ROW SUBLEASE

## SANTANA ROW

300 SANTANA ROW, SAN JOSE, CA 95128

### SPACE PROFILE

**16,366 SF**

Total SF Available

**3<sup>rd</sup> Floor**

Premises

**Plug & Play**

Condition

**Withheld**

Asking Rental Rate

**02/28/2025**

Term

**60 Days**

Availability

**The perfect opportunity in a world class amenity rich location**

**Class A Office Space Available**

### KEY HIGHLIGHTS

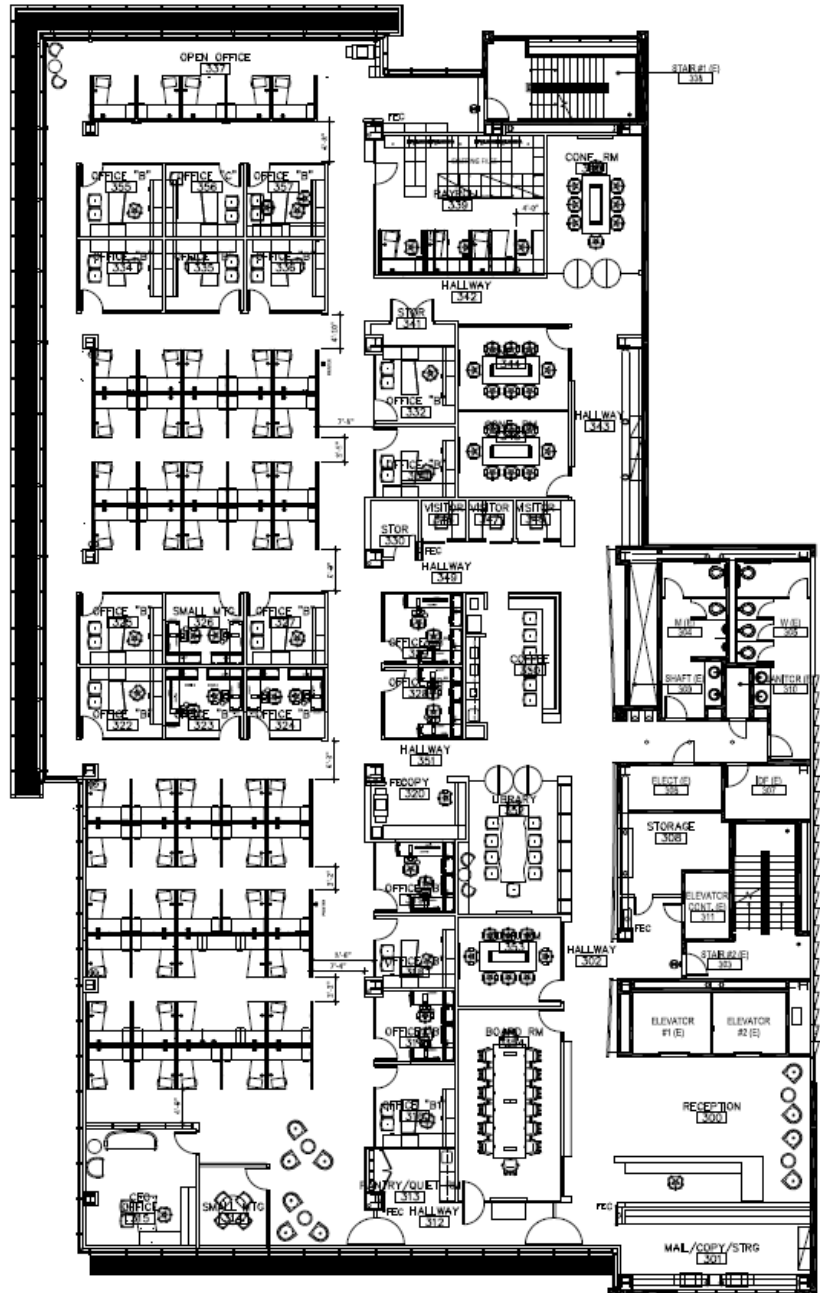
- Connected Workplace with outdoor Wi-Fi
- Open, Collaborative areas
- Dramatic Window line
- Fitness Center for Tenants
- Vibrant Neighborhood
- Excellent access to Highways 280 and 880
- 100 Shops and Restaurants



# 16,366 TOTAL SF • 3<sup>RD</sup> FLOOR • PLUG & PLAY

**300**  
**Santana Row**  
Suite 300  
16,366 SF

- 4 conference rooms
- 20+ private offices/huddle rooms
- 1 board room
- Reception desk
- Full break room and board room kitchenette
- Full floor identity



**Brad Schmitt**  
+1 949 660 3546  
[bschmitt@savills.us](mailto:bschmitt@savills.us)  
License 01875178

**Mike Mordaunt**  
+1 408 615 3441  
[Mike.Mordaunt@cushwake.com](mailto:Mike.Mordaunt@cushwake.com)  
License 01778048

**Spencer Galli**  
+1 415 342 0326  
[Spencer.Galli@cushwake.com](mailto:Spencer.Galli@cushwake.com)  
License 02126988

The information contained in this communication has been obtained from a variety of sources believed to be reliable but has not been verified. NO WARRANTY OR REPRESENTATION, EXPRESS OR IMPLIED, IS MADE AS TO THE CONDITION OF THE PROPERTY OR ACCURACY OR COMPLETENESS OF THE INFORMATION CONTAINED HEREIN AND SAME IS SUBMITTED SUBJECT TO ERRORS, OMISSIONS, CHANGE OF PRICE, RENTAL OR OTHER CONDITIONS, WITHDRAWAL WITHOUT NOTICE AND TO ANY SPECIFIC CONDITIONS IMPOSED BY THE PROPERTY OWNER OR LESSOR.



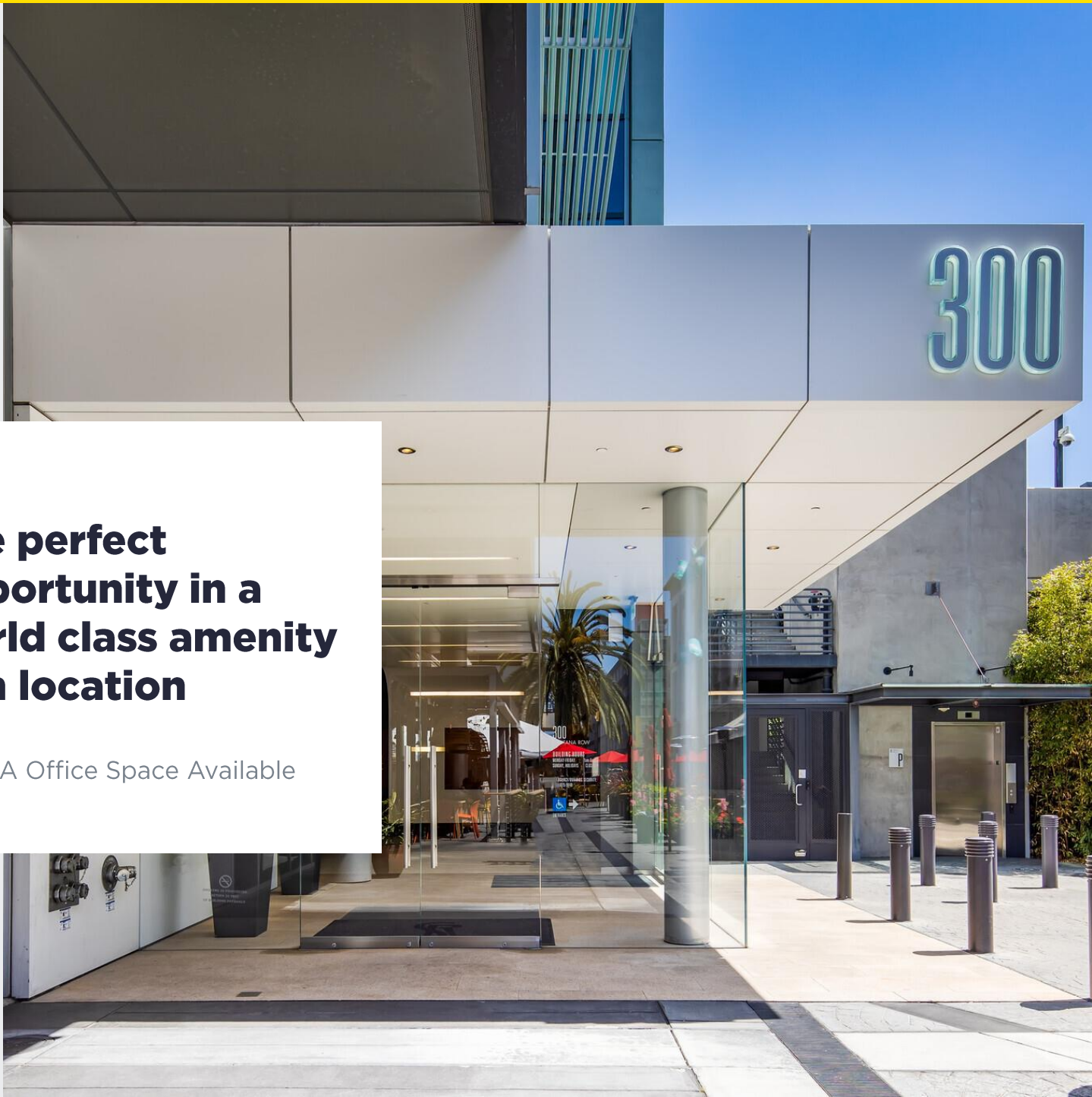




**16,366 TOTAL SF • 3<sup>RD</sup> FLOOR • PLUG & PLAY**

## **The perfect opportunity in a world class amenity rich location**

Class A Office Space Available



**Brad Schmitt**  
+1 949 660 3546  
[bschmitt@savills.us](mailto:bschmitt@savills.us)  
License 01875178

**Mike Mordaunt**  
+1 408 615 3441  
[Mike.Mordaunt@cushwake.com](mailto:Mike.Mordaunt@cushwake.com)  
License 01778048

**Spencer Galli**  
+1 415 342 0326  
[Spencer.Galli@cushwake.com](mailto:Spencer.Galli@cushwake.com)  
License 02126988

The information contained in this communication has been obtained from a variety of sources believed to be reliable but has not been verified. NO WARRANTY OR REPRESENTATION, EXPRESS OR IMPLIED, IS MADE AS TO THE CONDITION OF THE PROPERTY OR ACCURACY OR COMPLETENESS OF THE INFORMATION CONTAINED HEREIN AND SAME IS SUBMITTED SUBJECT TO ERRORS, OMISSIONS, CHANGE OF PRICE, RENTAL OR OTHER CONDITIONS, WITHDRAWAL WITHOUT NOTICE AND TO ANY SPECIFIC CONDITIONS IMPOSED BY THE PROPERTY OWNER OR LESSOR.

[savills.us](http://savills.us)